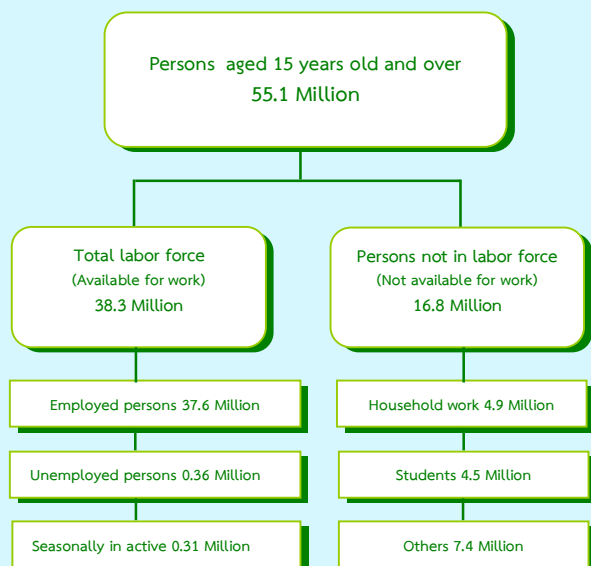


# EXECUTIVE SUMMARY

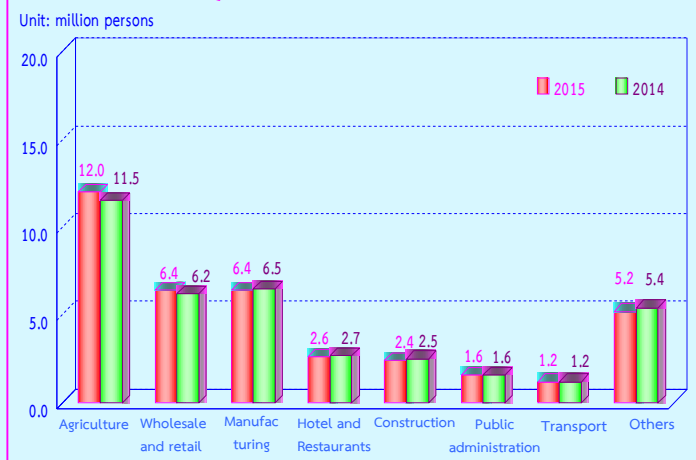
## LABOR FORCE SURVEY IN THE 1<sup>th</sup> QUARTER OF 2015

### NUMBER OF POPULATION BY LABOR FORCE THE LABOR FORCE SURVEY , QUARTER 1 : 2015



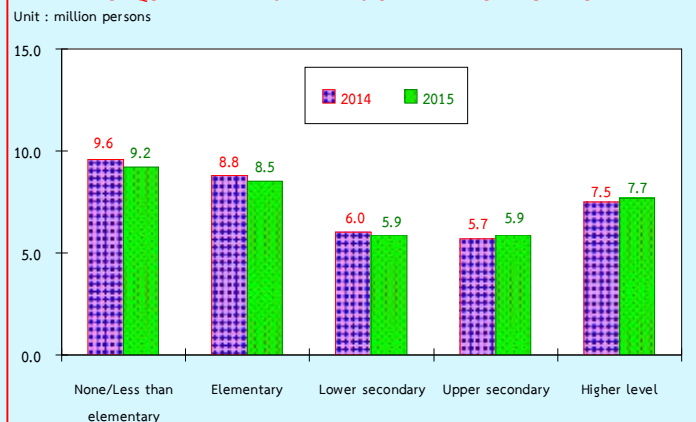
Some major findings from the 1<sup>th</sup> Quarter of the 2015 Labor Force Survey showed that there were 55.1 million people, aged 15 years and over, of these, 38.3 million were in the labor force (37.6 million were employed, 0.36 million were unemployed and 0.31 million were seasonally inactive labor force) and 16.8 million were not in the labor force (4.9 million were household work, 4.5 million were students and 7.4 million were others).

**FIGURE A COMPARISON OF THE NUMBER OF EMPLOYED PERSONS OF QUARTER 1 IN 2014 AND 2015 BY INDUSTRY**



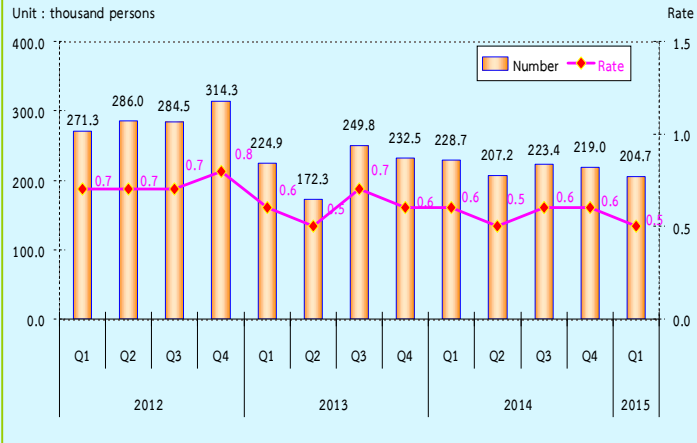
Comparing to the same period of 2014, the number of persons employed decreased by 0.2 million (from 37.8 million to 37.6 million) or 0.5%. It was found that the number of employed persons in non – agriculture sector increased by 0.3 million (from 25.8 million to 26.1 million). This increment was found in various industry, such as Manufacturing, Hotel and Restaurants and Construction about 0.1 million. Those in agriculture sector decreased by 0.5 million (from 12.0 million to 11.5 million).

**FIGURE B COMPARISON OF THE NUMBER OF EMPLOYED PERSONS OF QUARTER 1 IN 2014 AND 2015 BY LEVEL OF EDUCATION**



Comparing level of educational attainment of the employed persons to the same period of 2014, it was found that the number of employed persons with upper secondary level and higher level increased by 0.2 million. However, no education and with less than elementary decreased by 0.4 million, elementary level decreased by 0.3 million and lower secondary level decreased 0.1 million.

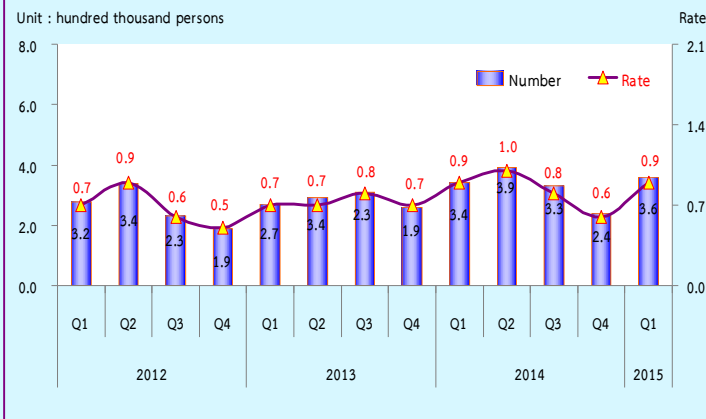
FIGURE C THE NUMBER AND RATE OF UNDEREMPLOYMENT WORKER BY QUARTERLY IN 2012 - 2015



Remark : Underemployment rate =  $\frac{\text{Employed persons 1-34 hours/week and available for additional work}}{\text{Total employed persons}} \times 100$

If the operation is not fully considered or function below the level of the working hours (defined as working less than 35 hours per week and available for additional work) in the first quarter 2015, showed that the number of people who work less than half a million of 2.0 held that those who work in this group, even if it is working, but it is not working at full capacity. Because they also have more time to work on their own. If the rate was lower when compared with the total number of 0.5%.

FIGURE D THE NUMBER OF UNEMPLOYED PERSONS AND UNEMPLOYMENT RATE IN 2012 - 2015

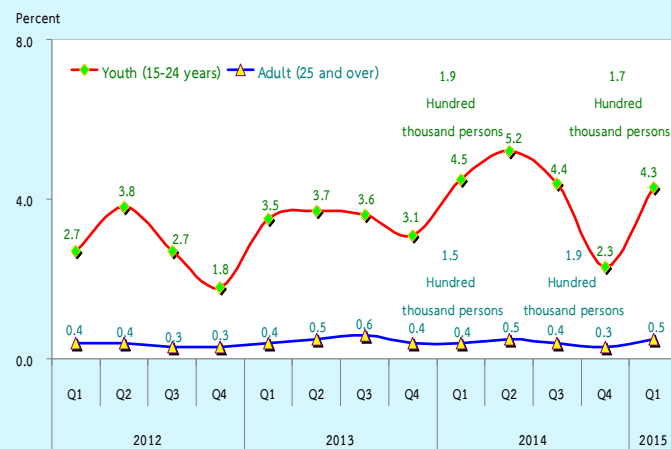


Remark : Unemployment rate =  $\frac{\text{Unemployed persons} \times 100}{\text{Total labor force}}$

However, when compared with the reaction time of the year 2014, the number of underemployment worker decreased by 30 thousand (from 0.6% to 0.5%).

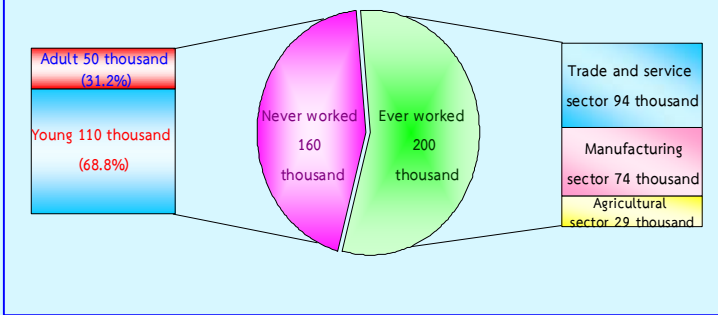
In the 1<sup>th</sup> quarter 2015, there were 0.36 million or 0.9% of unemployed persons. Comparing to the same period of last year, the number of unemployed persons increased by 20 thousand (from 0.34 million to 0.36 million). Considering by age group, it is noticeable that there were 0.17 million or 4.3% found in a teenager group (15-24 years old) and 0.19 million or 0.5% in adult group (25 years and over). Comparing to the same period of 2014, the number of unemployed persons decreased by 20 thousand (from 0.19 million to 0.17 million), in the teenagers'. The adult group increased by 40 thousand (from 0.15 million to 0.19 million).

FIGURE E UNEMPLOYMENT RATE IN 2012 - 2015 BY AGE GROUP



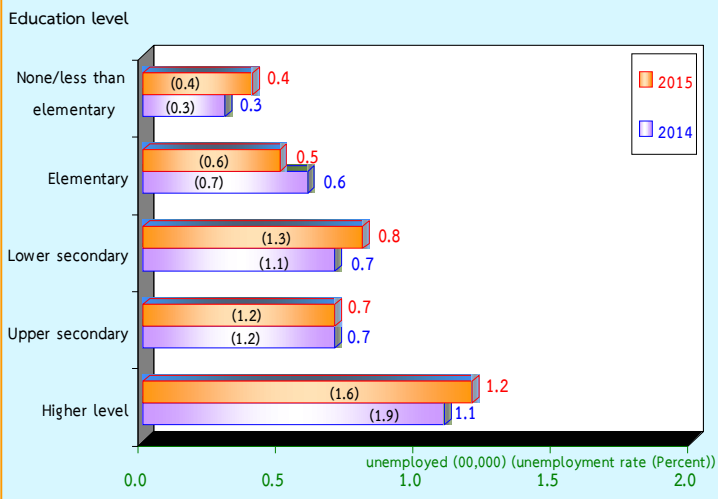
Remark : Unemployment rates by age group =  $\frac{\text{Unemployed persons by age group} \times 100}{\text{Total labor force by age group}}$

FIGURE F THE NUMBER OF UNEMPLOYED PERSONS BY EXPERIENCE OF WORK QUARTER 1 : 2015



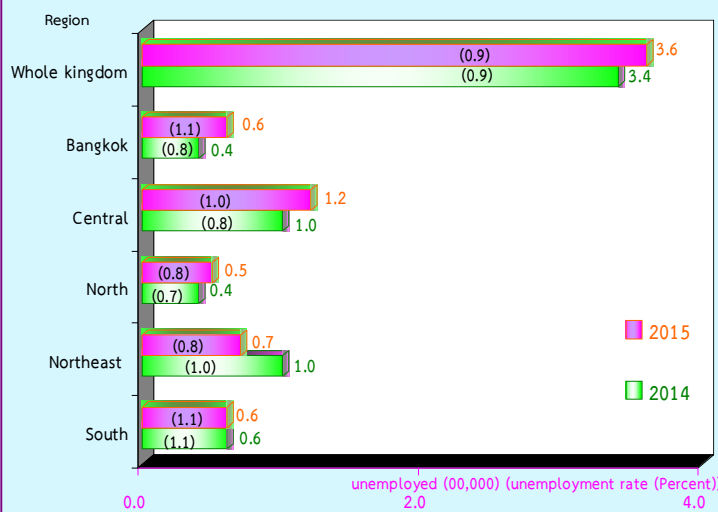
Concerning work experience of unemployed persons, about 160 thousand out of 360 thousand, had no experience in work, with these 110 thousand were from the teenager group, and 50 thousand from the adult group, about 200 thousand of unemployed persons have ever worked. Looking at the distribution of unemployed persons, about 94 thousand, were from the trade and service sector, 74 thousand were from manufacturing and the least of about 29 thousand were from agriculture sector.

FIGURE G COMPARISON NUMBER AND UNEMPLOYMENT RATES BY LEVEL OF EDUCATION, BETWEEN QUARTER 1 OF 2014 AND 2015



Data in the 1<sup>st</sup> Quarter 2015, showed that the higher level of education attainment, the higher number of unemployed, it is clearly seen that 120 thousand with the highest level of educational attainment were unemployed, followed by 80 thousand with lower secondary, by 70 thousand with upper secondary, by 50 thousand with elementary and around 40 thousand with no education and with less than elementary.

FIGURE H COMPARISON NUMBER AND UNEMPLOYMENT RATES BY REGION, BETWEEN QUARTER 1 OF 2014 AND 2015



Comparing the number of unemployment by region with the same period of last year, it showed that the number of unemployed persons in Bangkok and the Central increased by 20 thousand and the North increased by 10 thousand. However, the Northeast decreased by 30 thousand. The unemployment persons did not change in the South.

In sum, the results of the 1<sup>st</sup> Quarter in the 2015, Labor Force Survey revealed that the over all unemployment rates did not change comparing to the same period as in 2014. But, an increase appeared in most of the regions; Bangkok by 0.3 (from 0.8% to 1.1%), the Central by 0.2 (from 0.8% to 1.0%) and the North by 0.1 (from 0.7% to 0.8%). While a decrease in the Northeast by 0.3 (from 1.0% to 0.7%). The unemployment rates did not change in the South.