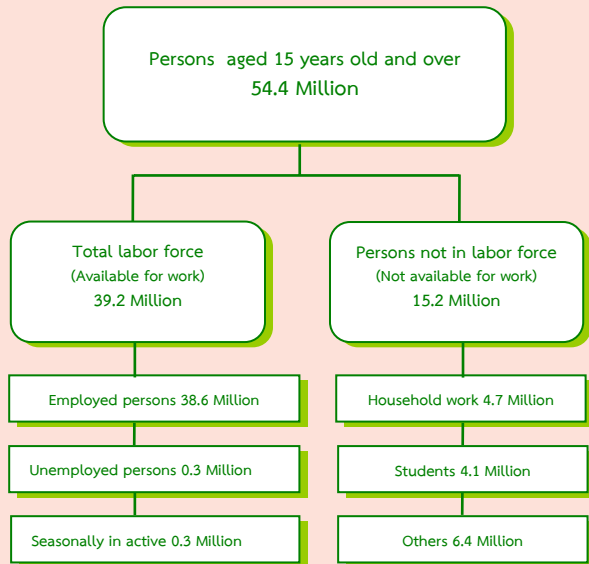


EXECUTIVE SUMMARY

LABOR FORCE SURVEY IN THE 2nd QUARTER OF 2012

NUMBER OF POPULATION BY LABOR FORCE THE LABOR FORCE SURVEY , QUARTER 2 : 2012



Some major findings from the 2nd Quarter of the 2012 Labor Force Survey showed that there were 54.4 million people, aged 15 years and over, of these, 39.2 million were in the labor force (38.6 million were employed, 0.3 million were unemployed and 0.3 million were seasonally inactive labor force) and 15.2 million were not in the labor force (4.7 million were household, 4.1 million were students and 6.4 million were others).

Comparing to the same period of 2011, the number of persons employed increased by 5.6 hundred thousand (from 38.0 million to 38.6 million) or about 1.5%. It was found that the number of employed persons in agriculture sector increased by 7.0 hundred thousand (from 14.3 million to 15.0 million). Those in non – agriculture sector decreased by 2 hundred thousand persons. (from 23.8 million to 23.6 million). This decrement was found in various industries, Hotel and Restaurants about 3.7 hundred thousand and Transport about 50 thousand .

FIGURE 1 COMPARISON OF THE NUMBER OF EMPLOYED PERSONS BETWEEN QUARTER 2 OF 2011 AND 2012 BY INDUSTRY

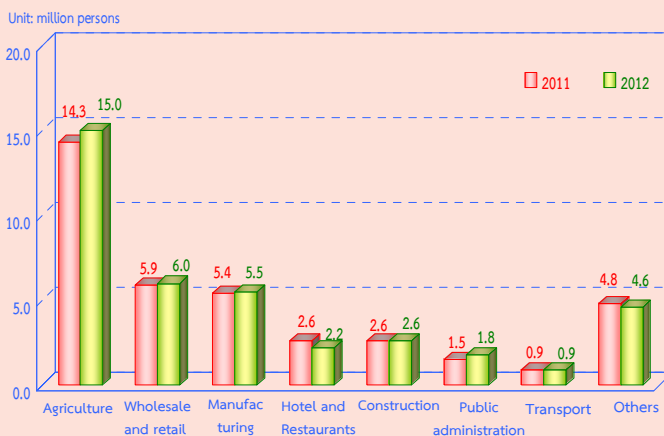
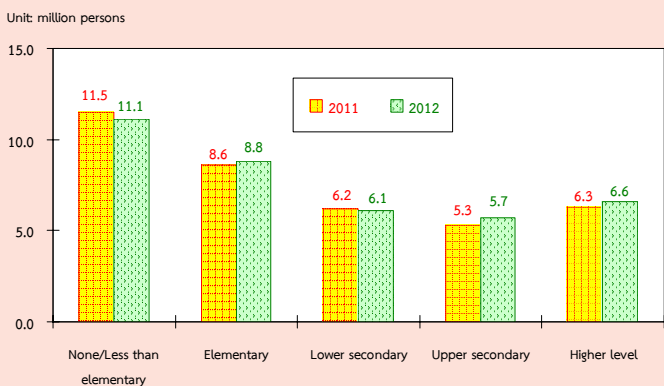
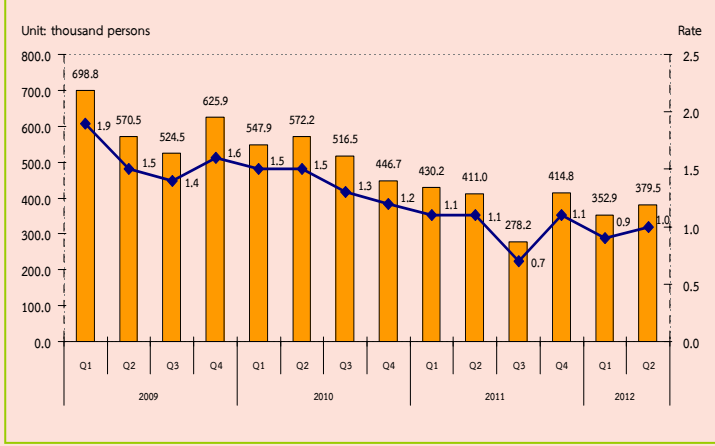


FIGURE 2 COMPARISON OF THE NUMBER OF EMPLOYED PERSONS BETWEEN QUARTER 2 OF 2011 AND 2012 BY LEVEL OF EDUCATION



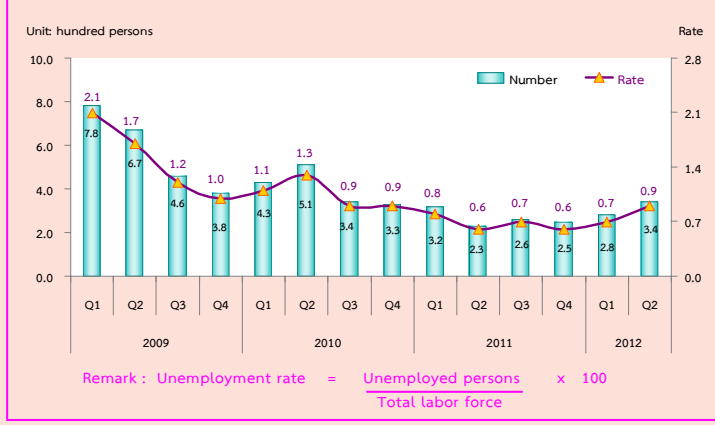
Comparing level of educational attainment of the employed persons to the same period of 2011, it was found that the number of employed persons with Upper secondary level and higher level increased by 3.8 hundred thousand, elementary level increased by 2.2 hundred thousand. However, employed persons with no education and with less than elementary and lower secondary level decreased by 3.9 hundred thousand and 1 hundred thousand respectively.

FIGURE 3 THE NUMBER AND RATE OF UNDEREMPLOYMENT WORKER BY QUARTER OF 2009 TO 2012



If the operation is not fully considered or function below the level of the working hours (defined as working less than 35 hours per week and available for additional work) in the second quarter of 2012 showed that the number of people who work less than half a million of 3.8 held that those who work in this group, even if it is working, but it is not working at full capacity. Because they also have more time to work on their own. If the rate was lower when compared with the total number of 1.0%.

FIGURE 4 THE NUMBER OF UNEMPLOYED PERSONS AND UNEMPLOYMENT RATE OF 2009 TO 2012



However, when compared with the reaction time of the year 2011, the number of underemployment worker decreased by 30 thousand or (from 1.1% to 1.0%).

From the 2nd quarter of 2012, there were 3.4 hundred thousand or 0.9% of unemployed persons. Comparing to the same period of last year, the number of unemployed persons increased by 1.1 hundred thousand (from 2.3 hundred thousand to 3.4 hundred thousand). Considering by age group, it is noticeable that there were 1.9 hundred thousand or 3.8% found in a teenager group (15-24 years old) and 1.5 hundred thousand or 0.4% in adult group (25 years and over). Comparing to the same period of 2011, the number of unemployed persons increased by 80 thousand (from 1.1 hundred thousand to 1.9 hundred thousand), in the teenagers'. The adult group increased by 20 thousand (from 1.3 hundred thousand to 1.5 hundred thousand).

FIGURE 5 UNEMPLOYMENT RATE OF 2009 TO 2012 BY AGE GROUP

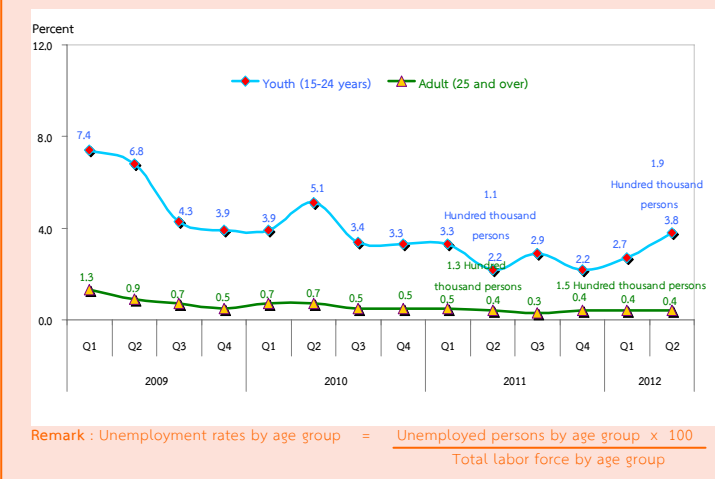
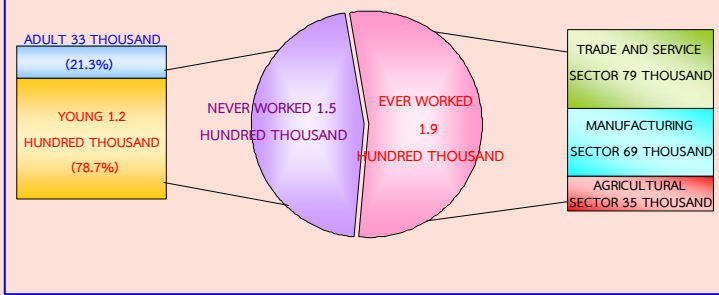
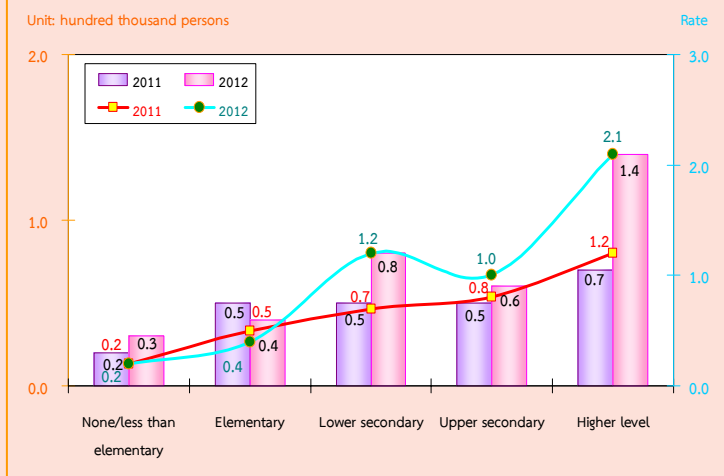


FIGURE 6 THE NUMBER OF UNEMPLOYED PERSONS BY EXPERIENCE OF WORK QUARTER 2 : 2012



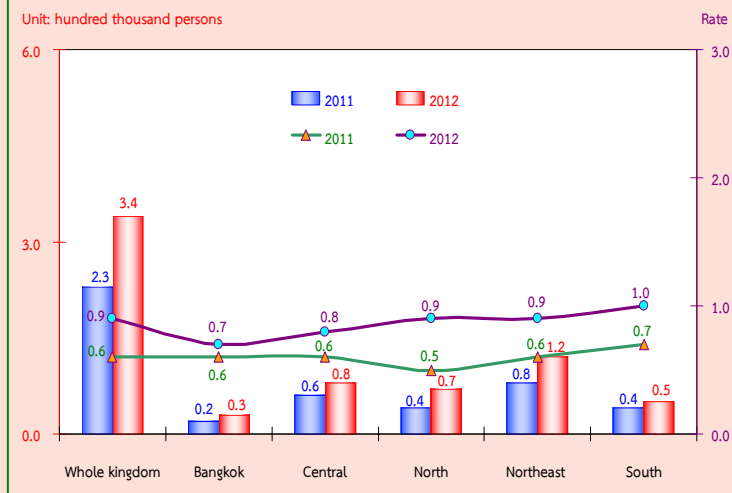
Concerning work experience of unemployed persons, about 1.5 hundred thousand out of 3.4 hundred thousand, had no experience in work, with these 1.2 hundred thousand were from the teenager group, and 33 thousand from the adult group, about 1.9 hundred thousand of unemployed persons have ever worked. Looking at the distribution of unemployed persons, about 79 thousand were from the trade and service sector, 69 thousand, were from manufacturing and the least, of about 35 thousand were from agriculture sector.

FIGURE 7 COMPARISON NUMBER AND UNEMPLOYMENT RATES BY LEVEL OF EDUCATION, BETWEEN QUARTER 2 OF 2011 AND 2012



Data of the 2nd Quarter showed that the higher level of education attainment, the higher number of unemployed, it is clearly seen that 1.4 hundred thousand with the highest level of educational attainment were unemployed, followed by 75 thousand, with lower secondary and 56 thousand, with upper secondary level. Unemployed persons with elementary level were about 38 thousand and around 27 thousand with no education and with less than elementary.

FIGURE 8 COMPARISON OF THE NUMBER AND UNEMPLOYMENT RATES BY REGION, BETWEEN QUARTER 2 OF 2011 AND 2012



Comparing the number of unemployment by region with the same period of last year, it showed that the number of unemployed persons of most regions increased, in the Northeast increased by 35 thousand, the North by 30 thousand, the Central by 20 thousand, the South by 17 thousand and Bangkok by 5 thousand.

In sum, the results of the 2nd Quarter of the 2012 Labor Force Survey revealed that the over all unemployment rates increased by 0.3 (from 0.6% to 0.9%). A increase appeared in most of the regions; the North by 0.4 (from 0.5% to 0.9%), the Northeast by 0.3 (from 0.6% to 0.9%) the South by 0.3 (from 0.7% to 1.0%), the Central by 0.2 (from 0.6% to 0.8%) and Bangkok by 0.1 (from 0.6% to 0.7%).