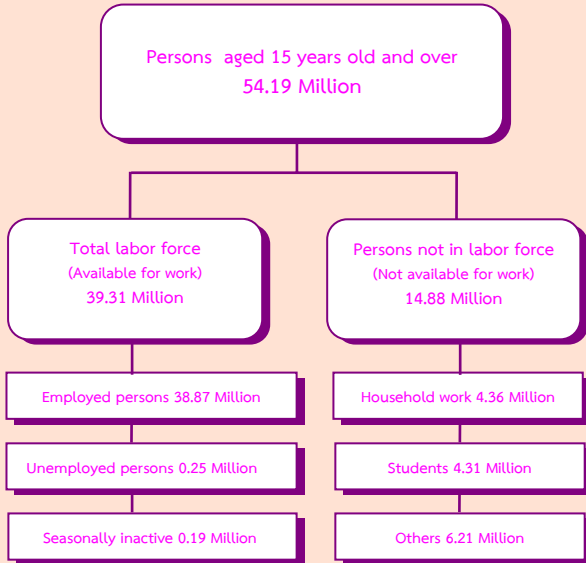


EXECUTIVE SUMMARY

LABOR FORCE SURVEY IN THE 4th QUARTER OF 2011

CHART OF THE NUMBER OF POPULATION BY LABOR FORCE
THE LABOR FORCE SURVEY , QUARTER 4 : 2011



Some major findings of Labor Force Survey in the fourth quarter of 2011, conducted by NSO showed that for people aged 15 years and over of 54.19 million persons, 39.31 million persons were in the labor force (38.87 million persons were employed, 0.25 million persons were unemployed and 0.19 million persons were seasonally inactive labor force) and 14.88 million persons were not in the labor force.

Comparing to the same period of 2010, the number of persons employed increased by 0.36 million persons. (from 38.51 million persons to 38.87 million persons) or about 0.9%. It was found that the number of employed persons in non-agriculture sector increased by 0.52 million persons (from 22.62 million persons to 23.14 million persons). This increment was found in various industries, Public administration about 0.19 million persons, Construction about 50 thousand persons, Wholesale and retail about 20 thousand persons. But Hotel and restaurants decreased about 0.15 million persons, Transport about 0.12 million persons, and Manufacturing about 10 thousand persons. Those in agriculture sector decreased by 0.16 million persons (from 15.89 million persons to 15.73 million persons).

FIGURE 1 COMPARISON OF THE NUMBER OF EMPLOYED PERSONS BETWEEN QUARTER 4 OF 2010 AND 2011 BY INDUSTRY

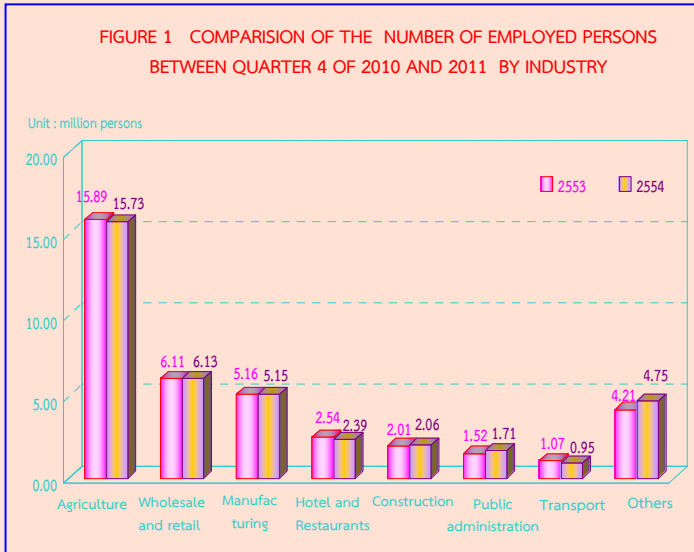
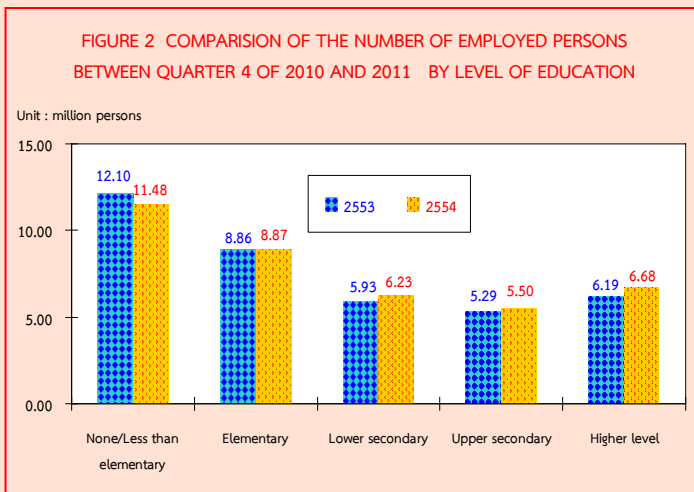
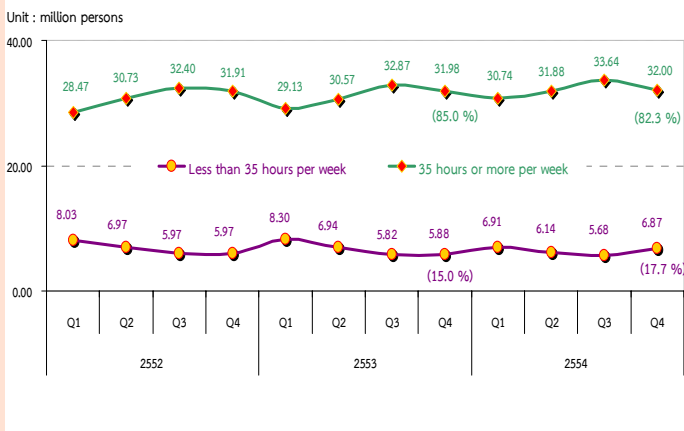


FIGURE 2 COMPARISON OF THE NUMBER OF EMPLOYED PERSONS BETWEEN QUARTER 4 OF 2010 AND 2011 BY LEVEL OF EDUCATION



Comparing the level of educational attainment of the employed persons to the same period of 2010, it was found that the number of employed persons with higher level increased by 0.49 million persons, followed by lower secondary level increased by 0.30 million persons, upper secondary level rose by 0.21 million persons, elementary level increased by 10 thousand persons. But employed persons with no education and less than elementary decreased by 0.62 million persons.

FIGURE 3 THE NUMBER OF EMPLOYED PERSONS



Regarding working hours per week of employed persons in the fourth quarter of 2011, it was showed that about 32.00 million persons or 82.3% of the total employed persons worked more than 35 hours per week. On the other hand, about 6.87 million persons or 17.7% of total employed persons worked less than 35 hours per week.

Comparing to the same period of 2010, the number of employed persons working less than 35 hours per week or part time worker increased about 0.99 million persons and those working more than 35 hours per week which was considered as a full time worker increased about 20 thousand persons.

FIGURE 4 THE NUMBER OF UNEMPLOYED PERSONS AND UNEMPLOYMENT RATE OF 2009 TO 2011

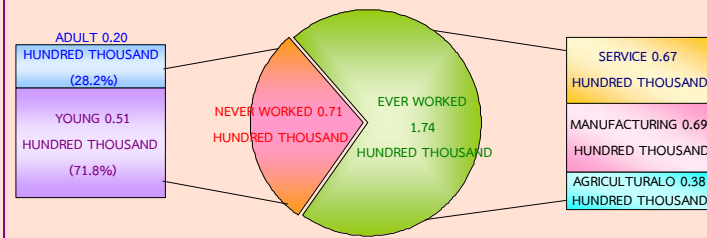


From the 4th quarter of 2011, there were 0.25 million persons or 0.6% of the unemployment rate. Comparing to the same period of the last year, the number of unemployed persons decreased by 84 thousand persons (from 0.33 million persons to 0.25 million persons). Considering by age group, there were 0.11 million persons in a youth group (15-24 years old) or 2.2% of the unemployment rate and 0.14 million persons in adult group (25 years and over) or 0.4% of the unemployment rate. Comparing to the same period of 2010, the youth unemployed persons (15-24 years old) decreased by 47 thousand persons (from 0.16 million persons to 0.11 million persons), and the adult group (25 years and over) decreased by 38 thousand persons (from 0.18 million persons to 0.14 million persons).

FIGURE 5 UNEMPLOYMENT RATE OF 2009 TO 2011

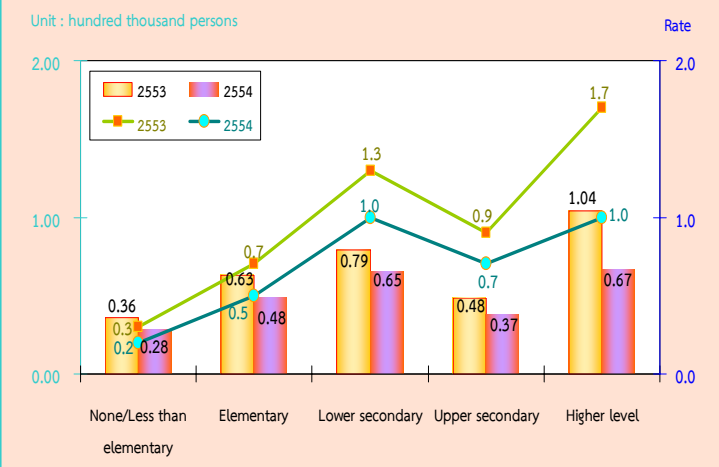


FIGURE 6 NUMBER OF UNEMPLOYED PERSONS BY EXPERIENCE OF WORK QUARTER 4 : 2011



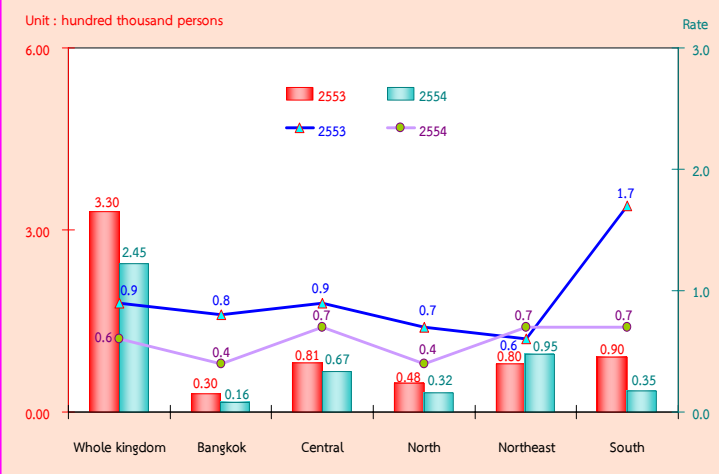
Concerning by experience of work, there were about 0.25 million unemployed persons in the fourth quarter of 2011, of which about 71 thousand persons had never worked. With this number, 51 thousand persons were from the youth group (15-24 years old), and 20 thousand persons from the adult group (25 years and over). About 0.17 million persons had ever worked. There were 69 thousand unemployed persons from the manufacturing sector, 67 thousand persons from the service sector and the least was from the agriculture sector of about 38 thousand persons.

FIGURE 7 COMPARISON OF THE NUMBER AND UNEMPLOYMENT RATES BY LEVEL OF EDUCATION, BETWEEN QUARTER 4 OF 2010 AND 2011



For the level of educational attainment of the unemployed persons, it was showed that the number of unemployed persons with higher level was the highest (67 thousand persons), followed by lower secondary level (65 thousand persons), elementary level (48 thousand persons), upper secondary level (37 thousand persons) and unemployed persons with no education and less than elementary were 28 thousand persons.

FIGURE 8 COMPARISON OF THE NUMBER AND UNEMPLOYMENT RATES BY REGION, BETWEEN QUARTER 4 OF 2010 AND 2011



Comparing the number of unemployment by region with the same period of the last year, it was showed that the number of unemployed persons in almost all regions were decreased. The South decreased by 55 thousand persons, followed by the North decreased by 16 thousand persons, Bangkok and the Central decreased by 14 thousand persons. While the Northeast increased by 15 thousand persons.

Concerning unemployment rate, it was showed that the overall unemployment rates decreased from 0.9% to 0.6%. The South decreased from 1.7% to 0.7% followed by, Bangkok (from 0.8% to 0.4%), the North (from 0.7% to 0.4%), the Central (from 0.9% to 0.7%). While the Northeast increased from 0.6% to 0.7%.