

CHAPTER 2

MAJOR FINDINGS

This chapter presents a summary of the results of the labor force survey conducted in the whole kingdom during the 1-12 of July – September 2011 which is the Third quarter of the year. The results obtained from this survey showed conditional of the number of employed, unemployed and interesting characteristics of labor force in July – September 2011 .

The number of population which had been used in the estimation procedure from the survey round 1 in February, 1995 were changed in order to correspond with those used in the 8th National Economic and Social Development Plan such number were obtained from the new series of Population Projection for Thailand, 1990-2020 which was revised by Quality of life and social development office, National Economic and Social Development Board in May 2003.

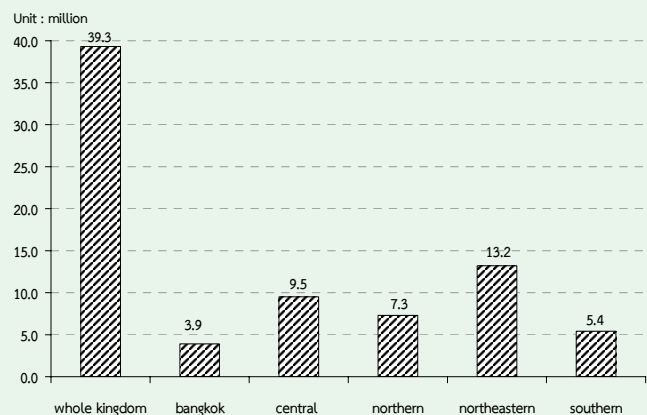
1. Structure of the labor force

The total population was estimated at 39.6 million, were in the labor force. Of the total labor force, about 66.7 per cent were residing in the non-municipal areas and about 53.8 per cent were males.

The “current labor force”, that is the currently active part of the total labor force, which was either employed or was available for employment in July – September 2011,

was of the order of 39.3 million. Since the survey period was among the agricultural season, the number of the seasonally inactive labor force was about 43,700 persons. This number will be increased when the survey in non-agriculture season.

FIGURE 1 NUMBER OF EMPLOYED PERSONS BY REGION



The current labor force was largely employed, however 0.7 per cent of which or about 0.26 million were unemployed. Of these, 0.1 per cent were looking for works and the rest 0.6 per cent were not looking for works but available for works.

Persons not in the labor force could be divided persons aged 15, about 14.4 million or 26.7 per cent of total population aged 15 years and over. About 4.4 million were housewives, 4.3 million were students and 4.6 million were young/old or incapable of work.

TABLE A NUMBER AND PERCENTAGE OF POPULATION BY LABOR FORCE STATUS, AREA AND SEX

LABOR FORCE STATUS	Whole kingdom			Municipal areas			Non - municipal areas		
	Total	Male	Female	Total	Male	Female	Total	Male	Female
Number ('000)									
Persons over 15 years	54,071.8	26,274.0	27,797.8	18,748.7	8,867.3	9,881.4	35,323.1	17,406.7	17,916.4
Total labor force	39,623.4	21,304.6	18,318.8	13,204.9	6,879.0	6,326.0	26,418.4	14,425.6	11,992.8
1.Current labor force	39,579.7	21,286.3	18,293.4	13,197.9	6,875.8	6,322.1	26,381.8	14,410.5	11,971.3
1.1 Employed	39,317.2	21,148.6	18,168.7	13,090.3	6,813.9	6,276.4	26,226.9	14,334.7	11,892.2
1) At work	39,131.8	21,037.1	18,094.7	13,037.7	6,782.7	6,255.0	26,094.1	14,254.4	11,839.7
2) With job but not at work	185.5	111.5	74.0	52.6	31.3	21.4	132.8	80.3	52.6
1.2 Unemployed	262.4	137.7	124.7	107.6	61.9	45.7	154.8	75.8	79.0
1) Looking for a job	50.7	21.5	29.2	24.4	14.6	9.8	26.3	6.9	19.4
2) Not looking /Available for work	211.7	116.2	95.5	83.2	47.3	35.9	128.5	68.9	59.6
2.Seasonally inactive labor	43.7	18.3	25.4	7.0	3.2	3.9	36.7	15.1	21.6
Not in labor force > 15 years of age	14,448.4	4,969.4	9,479.0	5,543.7	1,988.3	3,555.4	8,904.7	2,981.1	5,923.6
1. Household work	4,372.2	212.6	4,159.6	1,645.4	93.6	1,551.8	2,726.8	118.9	2,607.8
2. Studies	4,338.7	2,050.7	2,288.0	1,696.6	785.1	911.5	2,642.1	1,265.7	1,376.5
3. Too young/old or incapable to	4,648.7	2,002.0	2,646.7	1,572.7	685.6	887.1	3,075.9	1,316.4	1,759.6
4. Others	1,088.8	704.1	384.7	629.0	424.0	205.0	459.8	280.1	179.7
Percentage									
Persons over 15 years	100.0	100.0	100.0	100.0	100.0	100.0	100.0	100.0	100.0
Total labor force	73.3	81.1	65.9	70.4	77.6	64.0	74.8	82.9	66.9
1.Current labor force	73.2	81.0	65.8	70.4	77.5	64.0	74.7	82.8	66.8
1.1 Employed	72.7	80.5	65.4	69.8	76.8	63.5	74.3	82.4	66.4
1) At work	72.4	80.1	65.1	69.5	76.5	63.3	73.9	81.9	66.1
2) With job but not at work	0.3	0.4	0.3	0.3	0.4	0.2	0.4	0.5	0.3
1.2 Unemployed	0.5	0.5	0.5	0.6	0.7	0.5	0.4	0.4	0.4
1) Looking for a job	0.1	0.1	0.1	0.1	0.2	0.1	0.1	0.0	0.1
2) Not looking /Available for work	0.4	0.4	0.3	0.4	0.5	0.4	0.4	0.4	0.3
2.Seasonally inactive labor	0.1	0.1	0.1	0.0	0.0	0.0	0.1	0.1	0.1
Not in labor force > 15 years of age	26.7	18.9	34.1	29.6	22.4	36.0	25.2	17.1	33.1
1. Household work	8.1	0.8	15.0	8.8	1.1	15.7	7.7	0.7	14.6
2. Studies	8.0	7.8	8.2	9.1	8.9	9.2	7.5	7.3	7.7
3. Too young/old or incapable to	8.6	7.6	9.5	8.4	7.7	9.0	8.7	7.6	9.8
4. Others	2.0	2.7	1.4	3.4	4.8	2.1	1.3	1.6	1.0

TABLE B NUMBER AND PERCENTAGE OF POPULATION BY LABOR FORCE STATUS, SEX, REGION AND AREA

Labor Force Status and Sex	Whole Kingdom			Bangkok	Central Region			Northern Region			Northeastern Region			Southern Region		
	Total	M.A.	Non-M.A.		Total	M.A.	Non-M.A.	Total	M.A.	Non-M.A.	Total	M.A.	Non-M.A.	Total	M.A.	Non-M.A.
Number ('000)																
Total	54,071.8	18,748.7	35,323.1	5,614.4	13,027.0	4,818.2	8,208.9	10,042.6	2,683.2	7,359.4	18,113.4	3,604.3	14,509.1	7,274.5	2,028.7	5,245.8
In the labor force	39,623.4	13,204.9	26,418.4	3,899.7	9,556.6	3,469.3	6,087.3	7,351.6	1,871.1	5,480.6	13,360.4	2,494.1	10,866.3	5,455.2	1,470.9	3,984.3
Not in the labor force over 15 years	14,448.4	5,543.7	8,904.7	1,714.7	3,470.5	1,348.9	2,121.6	2,690.9	812.1	1,878.8	4,753.0	1,110.2	3,642.8	1,819.3	557.9	1,261.4
Male	26,274.0	8,867.3	17,406.7	2,552.5	6,279.1	2,299.7	3,979.4	4,919.0	1,285.3	3,633.7	8,944.8	1,753.1	7,191.7	3,578.6	976.6	2,601.9
In the labor force	21,304.6	6,879.0	14,425.6	1,968.1	5,074.6	1,815.5	3,259.1	3,954.9	973.0	2,981.9	7,300.8	1,336.8	5,964.0	3,006.3	785.6	2,220.7
Not in the labor force over 15 years	4,969.4	1,988.3	2,981.1	584.4	1,204.5	484.2	720.3	964.2	312.3	651.8	1,644.0	416.3	1,227.7	572.3	191.1	381.2
Female	27,797.8	9,881.4	17,916.4	3,061.8	6,747.9	2,518.5	4,229.5	5,123.6	1,397.9	3,725.7	9,168.6	1,851.2	7,317.4	3,695.9	1,052.1	2,643.8
In the labor force	18,318.8	6,326.0	11,992.8	1,931.6	4,482.0	1,653.8	2,828.2	3,396.8	898.1	2,498.7	6,059.6	1,157.3	4,902.3	2,448.9	685.3	1,763.6
Not in the labor force over 15 years	9,479.0	3,555.4	5,923.6	1,130.3	2,265.9	864.7	1,401.3	1,726.8	499.8	1,227.0	3,109.0	693.9	2,415.1	1,247.0	366.8	880.2
Percentage																
Total	100.0	100.0	100.0	100.0	100.0	100.0	100.0	100.0	100.0	100.0	100.0	100.0	100.0	100.0	100.0	100.0
In the labor force	73.3	70.4	74.8	69.5	73.4	72.0	74.2	73.2	69.7	74.5	69.2	74.9	75.0	75.0	72.5	76.0
Not in the labor force over 15 years	26.7	29.6	25.2	30.5	26.6	28.0	25.9	26.8	30.3	25.5	30.8	25.1	25.0	25.0	27.5	24.1
Male	100.0	100.0	100.0	100.0	100.0	100.0	100.0	100.0	100.0	100.0	100.0	100.0	100.0	100.0	100.0	100.0
In the labor force	81.1	77.6	82.9	77.1	80.8	78.9	81.9	80.4	75.7	82.1	76.3	82.9	84.0	84.0	80.4	85.4
Not in the labor force over 15 years	18.9	22.4	17.1	22.9	19.2	21.1	18.1	19.6	24.3	17.9	23.8	17.1	16.0	16.0	19.6	14.7
Female	100.0	100.0	100.0	100.0	100.0	100.0	100.0	100.0	100.0	100.0	100.0	100.0	100.0	100.0	100.0	100.0
In the labor force	65.9	64.0	66.9	63.1	66.4	65.7	66.9	66.3	64.3	67.1	62.5	67.0	66.3	66.3	65.1	66.7
Not in the labor force over 15 years	34.1	36.0	33.1	36.9	33.6	34.3	33.1	33.7	35.8	32.9	37.5	33.0	33.7	33.7	34.9	33.3

2. Labor force participation

Table C shows the labor force participation rates which was defined as the percentage of the population in the total labor force to the population 15 years of age and over was 73.3 per cent, and it

shows that persons in non-municipal areas had higher participation rates than the municipal areas (74.8 per cent compared with 70.4 per cent).

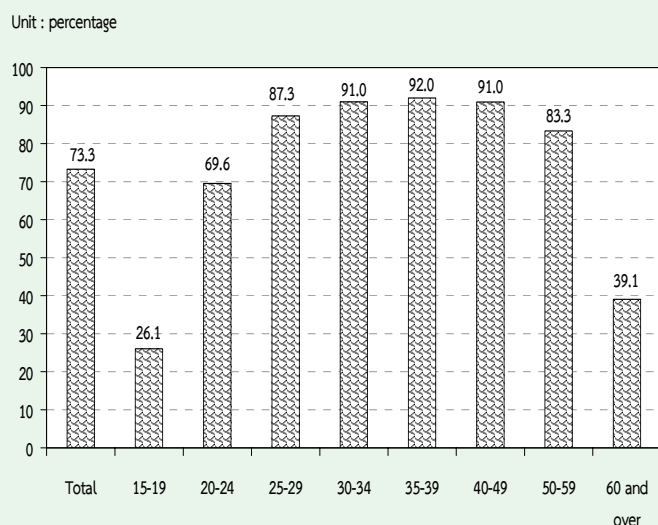
TABLE C LABOR FORCE PARTICIPATION RATES BY AGE GROUP, SEX, REGION AND AREA

(Percentage)

Age group (Years) and sex	Whole kingdom			Bangkok	Central region			Northern region			Northeastern region			Southern region		
	Total	M.A.	Non- M.A.		Total	M.A.	Non- M.A.	Total	M.A.	Non- M.A.	Total	M.A.	Non- M.A.	Total	M.A.	Non- M.A.
Total	73.3	70.4	74.8	69.5	73.4	72.0	74.2	73.2	69.7	74.5	73.8	69.2	74.9	75.0	72.5	76.0
15-19	26.1	18.3	29.5	12.7	26.1	23.4	27.5	22.4	13.9	25.4	28.0	17.0	30.8	31.4	25.2	33.7
20-24	69.6	60.8	73.5	47.4	70.7	68.5	72.0	71.1	62.6	74.1	68.5	56.2	71.5	77.3	71.3	79.5
25-29	87.3	88.3	86.9	85.7	89.1	89.3	89.0	88.9	89.5	88.7	85.7	88.6	85.0	87.1	89.2	86.4
30-34	91.0	90.9	91.0	91.2	90.6	90.5	90.7	91.5	91.3	91.6	91.8	91.0	92.0	88.9	90.4	88.3
35-39	92.0	92.0	92.0	91.9	92.6	92.1	93.0	92.9	93.3	92.7	90.9	91.5	90.8	92.5	91.9	92.8
40-49	91.0	88.9	92.1	87.8	89.6	88.0	90.6	92.3	90.5	92.9	92.1	90.3	92.6	91.7	90.2	92.3
50-59	83.3	78.1	86.2	71.7	80.9	77.9	82.6	86.1	82.0	87.6	86.8	83.9	87.5	85.0	81.8	86.2
60 and over	39.1	29.8	43.8	22.8	35.8	30.5	38.6	38.6	33.4	40.5	44.5	33.0	47.3	44.1	36.7	46.9
Male	81.1	77.6	82.9	77.1	80.8	78.9	81.9	80.4	75.7	82.1	81.6	76.3	82.9	84.0	80.4	85.4
15-19	32.7	22.4	37.1	16.6	33.0	26.8	36.2	30.0	17.2	34.4	32.5	21.4	35.2	42.4	30.8	46.6
20-24	79.0	68.1	83.7	60.0	78.6	73.3	81.4	80.0	67.5	84.3	78.3	62.9	82.1	86.7	78.5	89.7
25-29	94.6	93.5	95.2	90.2	94.7	94.6	94.8	94.7	92.8	95.4	95.0	94.7	95.1	95.8	96.1	95.7
30-34	96.3	96.7	96.0	96.6	96.0	96.3	95.9	96.3	96.9	96.1	96.1	96.6	95.9	96.8	97.8	96.4
35-39	96.8	97.1	96.6	97.5	97.1	97.1	97.0	96.9	98.0	96.6	96.0	95.5	96.2	97.5	97.8	97.3
40-49	96.9	96.3	97.2	96.6	96.3	95.8	96.5	96.7	95.4	97.2	97.1	96.1	97.3	98.1	98.2	98.0
50-59	92.1	87.9	94.4	83.8	90.1	86.5	92.1	93.2	88.9	94.7	94.6	93.2	95.0	94.8	92.4	95.7
60 and over	50.3	37.2	56.7	26.8	44.6	37.9	48.2	50.0	42.4	52.8	58.5	42.9	62.2	55.9	45.2	59.9
Female	65.9	64.0	66.9	63.1	66.4	65.7	66.9	66.3	64.3	67.1	66.1	62.5	67.0	66.3	65.1	66.7
15-19	19.2	14.2	21.4	8.9	18.9	20.0	18.4	14.4	10.6	15.9	23.3	12.4	26.0	19.7	19.6	19.7
20-24	59.7	53.7	62.5	36.5	62.6	63.7	62.0	61.5	57.6	62.9	58.1	49.4	60.3	67.1	63.9	68.3
25-29	79.8	83.2	78.0	81.9	83.6	84.3	83.2	82.8	86.0	81.6	75.6	82.3	73.9	78.1	82.3	76.5
30-34	85.6	85.5	85.7	86.8	85.2	84.8	85.4	86.5	85.8	86.8	87.2	85.1	87.8	80.7	83.1	79.8
35-39	87.4	87.4	87.4	87.2	88.3	87.3	89.0	88.9	88.8	88.9	85.9	87.6	85.4	87.7	86.5	88.3
40-49	85.5	82.3	87.3	80.5	83.4	80.8	85.0	88.1	86.1	88.9	87.4	84.9	88.0	85.6	83.0	86.6
50-59	75.3	69.5	78.5	61.5	72.6	70.3	74.0	79.4	75.7	80.8	79.3	75.4	80.3	75.8	72.3	77.3
60 and over	30.3	24.2	33.4	19.8	29.1	24.9	31.4	29.2	26.2	30.4	33.2	25.2	35.2	34.7	30.3	36.4

The participation rates were relatively high in almost every age-group, even in the age-group 15-19 at which the rates in non-municipal areas were higher than municipal areas. This was partly because in the agricultural households, the members who were students could help their families during the busy season. Whereas, this aged group in the municipal areas were mostly students.

FIGURE 2 LABOR FORCE PARTICIPATION RATES BY AGE GROUP (YEARS)



Considering sex differentials, it is found that males participated in the labor force more than females (81.1 and 65.9 per cent respectively) . It was true in both areas and every region.

Table D shows that the divorced participated the highest in the labor force (82.5 per cent) and males participation rates were the highest among the married about 89.8 per cent and females, the highest rate was among the divorced about 79.1 per cent. The results also show that in municipal area, the divorced participated the highest in the labor force, about 80.6 per cent, 85.9 per cent for married males and 78.2 per cent for divorced females. In non-municipal area, the divorced and the married participated the highest in the labor force about 83.9 per cent, 91.6 per cent for married males and 79.7 per cent for divorced females (excluded the unknown status who ever married were in the labor force only 0.01 per cent of the total labor force).

TABLE D LABOR FORCE PARTICIPATION RATES BY MARITAL STATUS, SEX AND AREA

(Percentage)

Area and sex	Total	Marital status					
		Single	Married	Widowed	Divorced	Separated	Married do not know status
Total	73.3	60.5	82.2	37.3	82.5	81.4	77.1
Male	81.1	66.2	89.8	42.4	88.3	87.8	89.8
Female	65.9	53.1	74.9	36.0	79.1	76.7	70.1
Municipal areas	70.4	61.9	78.4	36.7	80.6	80.1	87.6
Male	77.6	64.7	85.9	39.2	85.0	85.1	94.0
Female	64.0	59.0	70.9	36.0	78.2	76.9	83.3
Non-municipal areas	74.8	59.5	83.9	37.6	83.9	82.4	64.9
Male	82.9	66.9	91.6	44.1	90.5	89.6	83.4
Female	66.9	47.9	76.7	35.9	79.7	76.6	56.7

Table E illustrates the participation rates by educational attainment, area and sex. It shows that levels of education at which people seem to get more interested in working than at other levels were the higher level, elementary and upper secondary level. Those who completed less than elementary level and lower secondary level seemed to be more

interested in continuing education rather than taking up employment.

The participation rates in non-municipal areas are mostly higher than in municipal areas, except these of level of education; upper secondary level (Vocational).

FIGURE 3 LABOR FORCE PARTICIPATION RATES BY LEVEL OF EDUCATIONAL ATTAINMENT

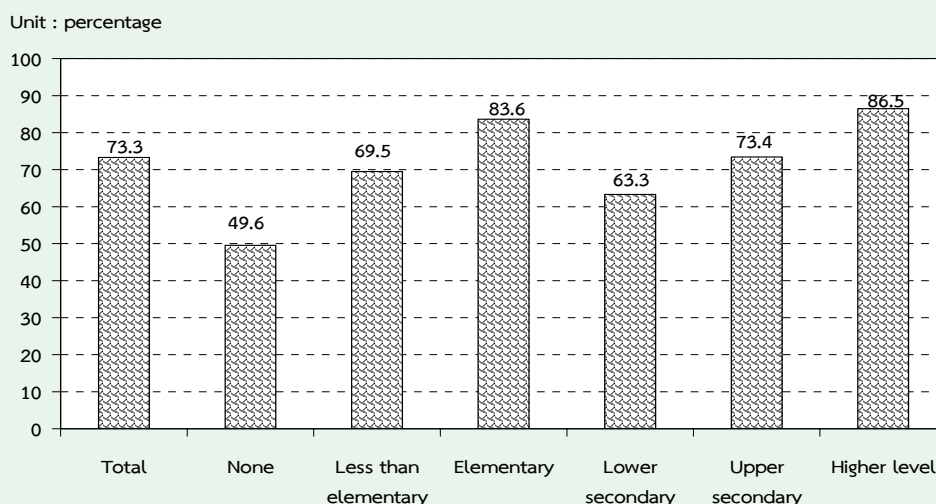


TABLE E LABOR FORCE PARTICIPATION RATES BY LEVEL OF EDUCATIONAL ATTAINMENT, AREA AND SEX

(Percentage)

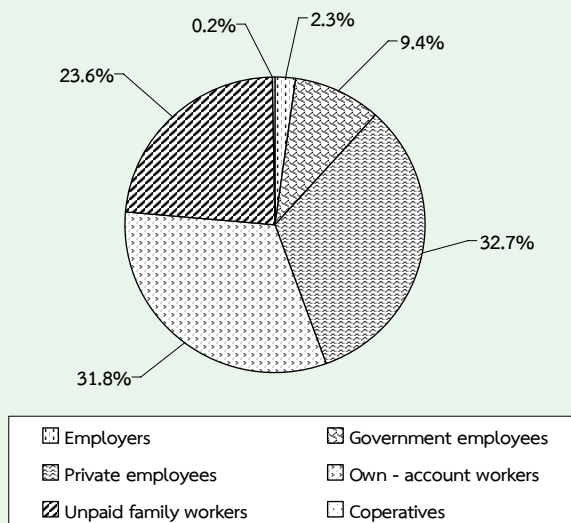
Area and sex	Level of educational attainment											Others ^{1/}	Unknown
	Total	None	Less than elementary	Elementary	Lower secondary	Upper secondary level			Higher level				
						General/academic	Vocational	Teacher training	Academic	Higher technical education	Teacher training		
Total	73.3	49.6	69.5	83.6	63.3	74.6	70.0	51.6	88.1	85.3	82.2	85.4	78.5
Male	81.1	62.6	79.3	89.1	71.9	83.4	75.1	70.6	90.2	91.7	81.4	97.9	79.1
Female	65.9	42.9	61.7	77.4	53.2	65.6	63.1	34.3	86.5	78.6	82.6	72.6	77.6
M.A.	70.4	43.6	61.5	80.2	62.0	66.1	70.0	43.1	86.5	83.9	75.6	85.1	76.6
Male	77.6	57.6	72.3	85.5	69.3	75.1	74.5	61.2	88.1	89.6	75.2	98.1	77.0
Female	64.0	36.8	53.9	74.6	53.7	57.5	64.6	31.6	85.3	78.0	75.9	73.0	76.1
Non-M.A.	74.8	51.8	72.3	84.8	64.0	80.3	70.0	80.4	91.3	86.7	88.8	85.6	82.6
Male	82.9	64.3	81.5	90.4	73.2	88.8	75.6	87.0	95.0	93.7	86.7	97.7	83.0
Female	66.9	45.2	64.7	78.5	53.0	71.3	61.6	58.9	88.9	79.2	90.3	72.4	81.7

^{1/} Including short course vocational

3. Employed labor force

3.1 Work status : (Table F) The highest proportion of the total employed person was employees or about 42.1 per cent and of these 4 in 5 were employed in private sector, followed by own account workers (31.8 per cent). The unpaid family workers and employer which accounted for 23.6 and 2.3 per cent of the total employed. While the percentage of members of producers' cooperatives was very less about 0.2 per cent of the total employed persons.

FIGURE 4 PERCENTAGE OF EMPLOYED PERSONS BY WORK STATUS



The majority of employed persons in both areas were employees, followed by own account workers. In municipal area, about 55.9 per cent were employees, among these, mostly working in private sector (42.7 per cent) while only 13.2 per cent were government employees. In non-municipal area, about 35.3 per cent were employees, among these, 27.8 per cent working in private sector, followed by own account workers 26.2 per cent in municipal area and 34.6 per cent in

non-municipal area. For the proportion of unpaid family workers in municipal area was rather low compared with non-municipal area (14.3 per cent and 28.2 per cent respectively).

When work status was considered by regions, it was found that the percentages of those employed in all regions include Bangkok were largely worked as employees, followed by own account workers.

3.2 Industry : (Table G) About 41.0 per cent of the total employed persons worked in agricultural sector and about 59.0 per cent in non-agricultural sector. The highest proportions of the employed persons was in the wholesale and retail trade 15.0 per cent, followed by manufacturing 13.3 per cent, accommodation and food service activities were the same 6.7 per cent, construction 5.5 per cent, public administration 4.0 per cent, education 3.3 per cent. The rest shared in the other industries.

Most employed persons in municipal area worked in non-agriculture sector 89.9 per cent, the principal activities were wholesale and retail trade (23.6 per cent), followed by manufacturing 17.2 per cent, accommodation and food service activities 13.1 per cent. Likewise, most of those in municipal area worked in non-agricultural sector 56.4 per cent.

Considering regional differentials, it was found that the majority of employed persons in the region were non-agricultural sector, especially the Central Region 74.3 per cent, the next was the South 53.4 per cent,

TABLE F NUMBER AND PERCENTAGE OF EMPLOYED PERSONS BY WORK STATUS, REGION AND AREA

WORK STATUS	Whole Kingdom			Bangkok	Central Region			Northern Region			Northeastern Region			Southern Region		
	Total	M.A.	Non-	Total	M.A.	Non-	Total	M.A.	Non-	Total	M.A.	Non-	Total	M.A.	Non-	
			M.A.													
Number ('000)																
Total	39,317.2	13,090.3	26,226.9	3,863.9	9,495.3	3,441.8	6,053.6	7,292.3	1,855.7	5,436.6	13,252.8	2,472.1	10,780.7	5,412.9	1,456.9	3,956.0
Employers	901.2	461.7	439.5	170.7	239.6	95.9	143.7	142.0	54.7	87.3	172.2	73.4	98.8	176.7	67.0	109.8
Government employees	3,709.5	1,733.4	1,976.1	364.5	799.7	348.6	451.1	739.1	343.2	395.9	1,328.5	488.1	840.4	477.7	189.0	288.7
Private employees	12,866.7	5,583.4	7,283.3	2,178.7	4,462.2	1,739.6	2,722.6	1,936.8	575.7	1,361.0	2,499.1	566.4	1,932.7	1,790.0	523.0	1,267.0
Own - account workers	12,512.9	3,435.3	9,077.6	849.8	2,426.1	820.8	1,605.4	2,476.9	551.5	1,925.5	4,992.6	782.2	4,210.3	1,767.5	431.1	1,336.4
Unpaid family workers	9,261.4	1,867.9	7,393.5	300.1	1,564.6	435.6	1,129.0	1,995.3	329.3	1,666.0	4,204.9	558.4	3,646.5	1,196.6	244.6	952.0
Members of Producers Cooperatives	65.6	8.6	57.0	0.2	3.2	1.2	1.9	2.2	1.3	0.9	55.5	3.6	51.9	4.6	2.3	2.3
Percentage																
Total	100.0	100.0	100.0	100.0	100.0	100.0	100.0	100.0	100.0	100.0	100.0	100.0	100.0	100.0	100.0	100.0
Employers	2.3	3.5	1.7	4.4	2.5	2.8	2.4	2.0	3.0	1.6	1.3	3.0	0.9	3.3	4.6	2.8
Government employees	9.4	13.2	7.5	9.4	8.4	10.1	7.5	10.1	18.5	7.3	10.0	19.7	7.8	8.8	13.0	7.3
Private employees	32.7	42.7	27.8	56.4	47.0	50.5	45.0	26.6	31.0	25.0	18.9	22.9	17.9	33.1	35.9	32.0
Own - account workers	31.8	26.2	34.6	22.0	25.6	23.9	26.5	34.0	29.7	35.4	37.7	31.6	39.1	32.7	29.6	33.8
Unpaid family workers	23.6	14.3	28.2	7.8	16.5	12.7	18.7	27.4	17.8	30.6	31.7	22.6	33.8	22.1	16.8	24.1
Members of Producers Cooperatives	0.2	0.1	0.2	0.0	0.0	0.0	0.0	0.0	0.1	0.0	0.4	0.1	0.5	0.1	0.2	0.1

the North 50.5 per cent, and the Northeast Region 43.2 per cent, the highest employed. For Bangkok the majority of employed person were considerably high in non-agricultural sector (99.6 per cent).

3.3 Occupation : From the distribution of employed persons by occupation (table H), skilled agricultural and fishery workers constituted the bulk of the employed labor force 38.7 per cent. The occupation group with the next largest number of workers was service workers and shop and market sales workers which accounted for 19.1 per cent, craft and related trades workers about 11.1 per cent, elementary occupations workers 9.7 per cent, and the rest were other occupations.

Again the pattern of occupation in municipal area was quite different from that of non-municipal area and the whole kingdom. In municipal area, about 32.2 per cent of the total employed were service workers and shop and market sales workers, 13.1 per cent were craft and related trades workers, and were elementary occupation, 10.5 per cent were plant and machine operators and assemblers. The occupational patterns in non-municipal area were similar to the whole kingdom, which the largest number of workers was skilled agricultural and fishery workers 53.2 per cent, followed by service workers and shop and market sales workers about 12.5 per cent, craft and related trades workers 10.1 per cent and elementary occupations workers 9.4 per cent.

In every region, the occupational patterns were not quite different. That was

the principal occupation was agricultural occupation especially in the Northeast, comprised 55.4 per cent, the next was the South and North 45.1 per cent, and the Central 22.1 percent. But in the Bangkok, service workers and shop and market sales workers constituted about 30.2 per cent of the total employed. Around 13.4 per cent were crafts and related trade workers, plant and machine operators 12.1 per cent, elementary occupations workers 10.3 per cent, professionals about 9.6 per cent, technicians and associate professionals about 9.4 per cent, clerks about 6.9 per cent, and legislator senior officials and manage about 6.8 per cent and the rest were other occupations.

3.4 Education : The distribution of employed persons by level of educational attainment (Table I) illustrated that of the employed people, vast majority had low level of education, 53.3 per cent only held some elementary level or none at all, while 29.9 per cent in secondary level, 16.5 per cent in higher level and the rest were others.

Among people residing in municipal areas who were employed and completed more than elementary level (secondary and higher level) was higher than those live in non-municipal areas (61.1 per cent and 39.1 per cent respectively). In municipal area, 38.5 per cent of employed person had some elementary level or none at all, 32.1 per cent had secondary level and 29.0 per cent had higher level, whereas the corresponding educational level for employed persons in non-municipal area were 60.7, 28.8 and 10.3 per cent respectively.

TABLE H NUMBER AND PERCENTAGE OF EMPLOYED PERSONS BY OCCUPATION, REGION AND AREA

OCCUPATION	Whole Kingdom			Bangkok	Central Region			Northern Region			Northeastern Region			Southern Region		
	Total	M.A.	Non-M.A.	Total	M.A.	Non-M.A.	Total	M.A.	Non-M.A.	Total	M.A.	Non-M.A.	Total	M.A.	Non-M.A.	
	Number ('000)															
Total	39,317.2	13,090.3	26,226.9	3,863.9	9,495.3	3,441.8	6,053.6	7,292.3	1,855.7	5,436.6	13,252.8	2,472.1	10,780.7	5,412.9	1,456.9	3,956.0
1. Legislator, senior officials and manage	969.5	521.0	448.5	262.2	235.8	108.0	127.9	125.4	45.2	80.1	264.4	71.2	193.2	81.7	34.4	47.3
2. Professionals	1,863.5	1,066.9	796.5	369.7	427.7	206.8	220.9	306.2	157.6	148.6	538.1	243.6	294.6	221.7	89.2	132.5
3. Technicians and associate professionals	1,285.8	841.2	444.6	364.6	397.4	209.5	187.9	172.5	91.6	80.9	223.2	107.9	115.3	128.1	67.7	60.4
4. Clerks	1,319.5	726.2	593.3	268.3	380.9	172.8	208.1	214.7	99.1	115.6	306.0	119.0	187.1	149.5	67.0	82.5
5. Service workers and shop and market sales workers	7,503.5	4,219.2	3,284.2	1,166.1	2,008.5	1,075.8	932.7	1,243.1	591.0	652.2	1,906.5	780.5	1,126.0	1,179.2	605.9	573.4
6. Skilled agricultural and fishery workers	15,206.8	1,256.8	13,950.0	35.5	2,097.2	196.1	1,901.1	3,286.1	306.2	2,979.9	7,345.0	537.5	6,807.5	2,443.1	181.6	2,261.5
7. Craftsmen and related trades workers	4,354.4	1,712.8	2,641.6	515.7	1,239.1	469.5	769.6	812.2	269.7	542.5	1,243.5	279.0	964.5	543.9	178.9	365.0
8. Plant and machine operators and assemblers	2,958.5	1,378.3	1,580.3	468.7	1,468.2	614.4	853.9	303.2	91.7	211.5	526.5	122.8	403.7	191.9	80.7	111.2
9. Elementary occupations	3,819.7	1,344.2	2,475.6	399.2	1,221.5	378.9	842.6	828.9	203.7	625.3	896.2	210.8	685.4	473.8	151.6	322.2
10. Workers not classifiable by occupation	36.2	23.8	12.4	13.9	18.9	10.0	9.0	-	-	-	3.4	-	3.4	-	-	-
	Percentage															
Total	100.0	100.0	100.0	100.0	100.0	100.0	100.0	100.0	100.0	100.0	100.0	100.0	100.0	100.0	100.0	100.0
1. Legislator, senior officials and manage	2.5	4.0	1.7	6.8	2.5	3.1	2.1	1.5	2.4	1.2	2.0	2.9	1.8	1.5	2.4	1.2
2. Professionals	4.7	8.2	3.0	9.6	4.5	6.0	3.7	4.1	6.1	3.4	4.1	9.9	2.7	4.1	6.1	3.4
3. Technicians and associate professionals	3.3	6.4	1.7	9.4	4.2	6.1	3.1	2.4	4.6	1.5	1.7	4.4	1.1	2.4	4.6	1.5
4. Clerks	3.4	5.6	2.3	6.9	4.0	5.0	3.4	2.8	4.6	2.1	2.3	4.8	1.7	2.8	4.6	2.1
5. Service workers and shop and market sales workers	19.1	32.2	12.5	30.2	21.2	31.3	15.4	21.8	41.6	14.5	14.4	31.6	10.4	21.8	41.6	14.5
6. Skilled agricultural and fishery workers	38.7	9.6	53.2	0.9	22.1	5.7	31.4	45.1	12.5	57.2	55.4	21.7	63.2	45.1	12.5	57.2
7. Craftsmen and related trades workers	11.1	13.1	10.1	13.4	13.1	13.6	12.7	10.1	12.3	9.2	9.4	11.3	9.0	10.1	12.3	9.2
8. Plant and machine operators and assemblers	7.5	10.5	6.0	12.1	15.5	17.9	14.1	3.6	5.5	2.8	4.0	5.0	3.7	3.6	5.5	2.8
9. Elementary occupations	9.7	10.3	9.4	10.3	12.9	11.0	13.9	8.8	10.4	8.2	6.8	8.5	6.4	8.8	10.4	8.2
10. Workers not classifiable by occupation	0.1	0.2	0.1	0.4	0.2	0.3	0.2	-	-	-	0.0	-	0.0	-	-	-

TABLE I NUMBER AND PERCENTAGE OF EMPLOYED PERSON BY LEVEL OF EDUCATIONAL ATTAINMENT, REGION AND AREA

LEVEL OF EDUCATIONAL ATTAINMENT	Whole Kingdom			Bangkok	Central Region			Northern Region			Northeastern Region			Southern Region		
	Total	M.A.	Non- M.A.	Total	M.A.	Non- M.A.	Total	M.A.	Non- M.A.	Total	M.A.	Non- M.A.	Total	M.A.	Non- M.A.	
Number ('000)																
Total	39,317.2	13,090.3	26,226.9	3,863.9	9,495.3	3,441.8	6,053.6	7,292.3	1,855.7	5,436.6	13,252.8	2,472.1	10,780.7	5,412.9	1,456.9	3,956.0
None	1,149.3	269.5	879.8	57.9	289.6	85.3	204.3	432.2	62.0	370.2	147.6	19.7	127.9	221.9	44.5	177.4
Less than Elementary	10,911.6	2,533.9	8,377.7	569.0	2,430.0	681.3	1,748.7	2,400.8	462.9	1,937.9	4,241.2	558.0	3,683.2	1,270.6	262.7	1,007.9
Elementary	8,881.2	2,227.0	6,654.3	670.6	1,895.3	579.8	1,315.5	1,430.3	255.9	1,174.4	3,557.0	452.3	3,104.7	1,328.1	268.5	1,059.7
Lower Secondary	6,192.7	2,048.6	4,144.1	576.7	1,736.7	663.3	1,073.4	992.7	244.7	748.0	2,017.9	330.8	1,687.1	868.7	233.1	635.6
Upper Secondary Level	5,558.5	2,141.8	3,416.8	575.4	1,484.7	617.5	867.2	944.8	278.1	666.7	1,741.8	418.6	1,323.2	811.9	252.2	559.7
General/Academic	4,249.1	1,518.0	2,731.1	370.7	1,069.4	443.1	626.3	737.5	204.2	533.3	1,446.1	333.8	1,112.2	625.5	166.3	459.3
Vocational	1,301.3	618.5	682.8	204.1	414.0	173.7	240.3	205.8	72.7	133.1	292.9	82.9	210.1	184.5	85.1	99.4
Teacher Training	8.1	5.2	2.9	0.6	1.3	0.7	0.6	1.5	1.2	0.3	2.8	1.9	0.9	1.9	0.9	1.0
Higher Level	6,491.1	3,792.7	2,698.4	1,398.5	1,617.1	794.2	822.9	1,064.7	536.3	528.4	1,540.9	690.4	850.6	869.9	373.3	496.6
Academic	3,708.4	2,452.1	1,256.2	1,061.7	890.2	478.6	411.6	562.8	308.8	254.0	735.6	382.4	353.2	458.0	220.6	237.4
Higher Technical Education	1,990.1	970.9	1,019.2	277.7	571.2	242.3	328.9	347.3	151.3	196.0	513.9	191.7	322.2	280.0	107.9	172.1
Teacher Training	792.6	369.7	423.0	59.1	155.7	73.3	82.4	154.5	76.2	78.3	291.5	116.3	175.2	131.9	44.9	87.0
Others ^{1/}	44.0	18.4	25.6	-	8.2	2.7	5.5	26.3	15.2	11.1	0.4	0.4	-	9.1	0.1	9.0
Unknown	88.9	58.6	30.3	15.8	33.7	17.7	16.0	0.6	0.6	-	6.1	2.0	4.1	32.7	22.5	10.2
Percentage																
Total	100.0	100.0	100.0	100.0	100.0	100.0	100.0	100.0	100.0	100.0	100.0	100.0	100.0	100.0	100.0	100.0
None	2.9	2.1	3.4	1.5	3.1	2.5	3.4	5.9	3.3	6.8	1.1	0.8	1.2	4.1	3.1	4.5
Less than Elementary	27.8	19.4	31.9	14.7	25.6	19.8	28.9	32.9	24.9	35.7	32.0	22.6	34.2	23.5	18.0	25.5
Elementary	22.6	17.0	25.4	17.4	20.0	16.9	21.7	19.6	13.8	21.6	26.8	18.3	28.8	24.5	18.4	26.8
Lower Secondary	15.8	15.7	15.8	14.9	18.3	19.3	17.7	13.6	13.2	13.8	15.2	13.4	15.7	16.1	16.0	16.1
Upper Secondary Level	14.1	16.4	13.0	14.9	15.6	17.9	14.3	13.0	15.0	12.3	13.1	16.9	12.3	15.0	17.3	14.2
General/Academic	10.8	11.6	10.4	9.6	11.3	12.9	10.4	10.1	11.0	9.8	10.9	13.5	10.3	11.6	11.4	11.6
Vocational	3.3	4.7	2.6	5.3	4.4	5.1	4.0	2.8	3.9	2.5	2.2	3.4	2.0	3.4	5.8	2.5
Teacher Training	0.0	0.0	0.0	0.0	0.0	0.0	0.0	0.0	0.1	0.0	0.0	0.1	0.0	0.0	0.1	0.0
Higher Level	16.5	29.0	10.3	36.2	17.0	23.1	13.6	14.6	28.9	9.7	11.6	27.9	7.9	16.1	25.6	12.6
Academic	9.4	18.7	4.8	27.5	9.4	13.9	6.8	7.7	16.6	4.7	5.6	15.5	3.3	8.5	15.1	6.0
Higher Technical Education	5.1	7.4	3.9	7.2	6.0	7.0	5.4	4.8	8.2	3.6	3.9	7.8	3.0	5.2	7.4	4.4
Teacher Training	2.0	2.8	1.6	1.5	1.6	2.1	1.4	2.1	4.1	1.4	2.2	4.7	1.6	2.4	3.1	2.2
Others ^{1/}	0.1	0.1	0.1	-	0.1	0.1	0.1	0.4	0.8	0.2	0.0	0.0	-	0.2	0.0	0.2
Unknown	0.2	0.5	0.1	0.4	0.4	0.5	0.3	0.0	0.0	-	0.1	0.1	0.0	0.6	1.5	0.3

1/ Including short course vocational

On the region level, the majority of employed persons in every region had some elementary level of education or none at all, especially the highest percentage in the Northeast about 59.9 per cent, follow by the North with 58.4 per cent, the South with 52.1 per cent, the Central 48.7 per cent. With regards to the secondary level of those employed persons, the Central shows the highest percentage with 33.9 per cent, followed by the South 31.1 per cent, the Northeast 28.3 per cent and the North 26.6 per cent respectively. It is also noted that at higher level of education, the Central also shows the highest percentage with 17.0 per cent, followed by the South, the North and the Northeast with 16.1, 14.6 and 11.6 per cent respectively.

For Bangkok, most of employed person completed more than elementary level (66.0 per cent), especially the high rate in the higher level (36.2 per cent).

4. Unemployment

The unemployment rate is the ratio of the number of unemployed persons to the labor force expressed as a percentage. It depends therefore on the definition of unemployment as well as of the labor force adopted in the survey. Beginning from the survey in August 1982, unemployment has been measured, for a better understanding of the situation, in terms of persons available for works, including not only those actively looking for work but also those not looking for but available for works. As well, the classification of the labor force status or activity has been revised to include, besides the current labor force, the seasonally inactive labor force, to constitute what is described as the total labor force. Different unemployment rates can be computed for purposed of comparative analysis, using different measures of unemployment and labor force as given in Table J.

TABLE J DIFFERENT RATES OF UNEMPLOYMENT, QUARTER 3 : JULY - SEPTEMBER 2011

(Percentage)		
Labor force	Actively looking for work	Total available for work
Current labor force	0.1	0.7
Total labor force	0.1	0.7

In general, during the agricultural season, the unemployment rate calculated from the total labor force is very close to that obtained from the current labor force

but in the slack season the rates are quite different.

At this quarter of the survey, the rate of total unemployment or percentage

of the total labor force who did not work but were available for work (total available for work) was about 0.7 per cent while the open unemployment which measured from those who were actively looking for work was 0.1 per cent. Generally, any measurement of unemployment shows that the number of unemployed persons was among the off-season of agriculture are more than the numbers among agriculture season of the same year.

Table K reveals that the rate of unemployment was rather high among the

young population aged 15-29 years or those who just entered in the labor force. Of these the population aged 15-24 years (include males and females) had very high rates of unemployment, especially the population age 20-24 years had the highest rates (3.0 per cent). This reflects an increasingly widespread problem of unemployment among the young population with middle and high level of educational attainment since the young with secondary level, higher level or equivalent educational levels begin to enter the labor market at around this age-group.

FIGURE 5 UNEMPLOYMENT RATES BY AGE GROUP (YEARS)

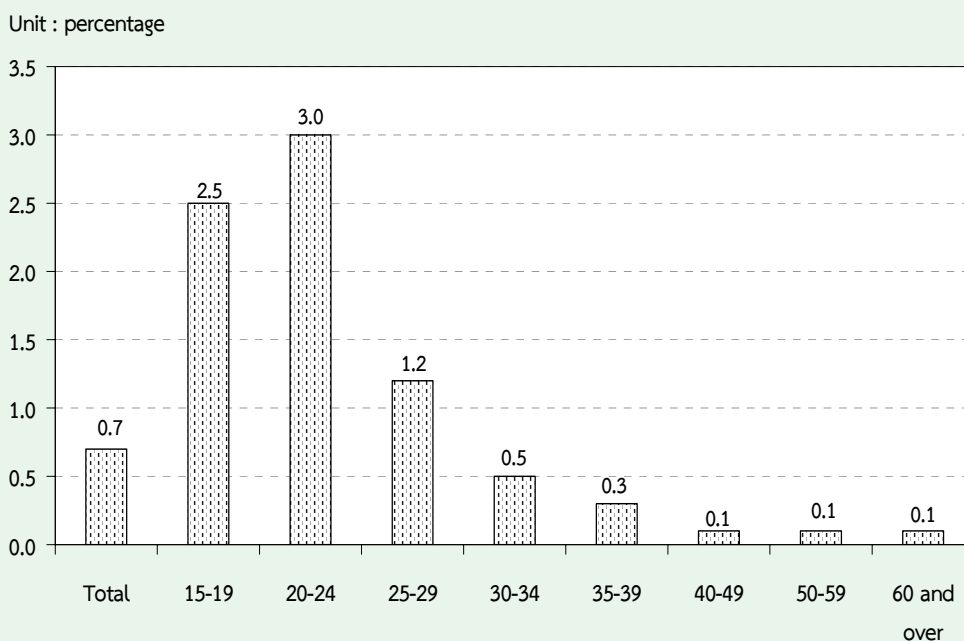


TABLE K UNEMPLOYMENT RATES BY AGE GROUP, SEX, REGION AND AREA

Sex and age group (years)	(Percentage)															
	Whole kingdom			Bangkok	Central region			Northern region			Northeastern region			Southern region		
	Total	M.A.	Non-M.A.		Total	M.A.	Non-M.A.	Total	M.A.	Non-M.A.	Total	M.A.	Non-M.A.	Total	M.A.	Non-M.A.
Total	0.7	0.8	0.6	0.9	0.9	0.6	0.8	0.5	0.6	0.7	0.6	0.6	0.8	0.6	0.7	0.9
15-19	2.5	4.0	2.1	4.0	4.0	2.4	4.2	1.6	0.6	2.6	0.2	2.8	3.7	2.7	3.4	5.1
20-24	3.0	3.9	2.7	4.8	4.8	3.1	3.9	2.7	3.3	3.6	3.2	2.7	3.5	2.6	2.7	3.7
25-29	1.2	1.2	1.1	2.0	2.0	1.0	1.0	0.9	0.7	0.6	0.8	1.3	0.9	1.3	1.2	1.2
30-34	0.5	0.8	0.3	1.1	1.1	0.4	0.6	0.2	0.5	0.9	0.3	0.4	0.8	0.3	0.4	0.7
35-39	0.3	0.6	0.2	1.0	1.0	0.1	0.1	0.1	0.3	0.3	0.3	0.3	0.8	0.2	0.2	0.1
40-49	0.1	0.2	0.1	0.2	0.2	0.2	0.2	0.2	0.2	0.2	0.2	0.1	0.1	0.0	0.0	0.2
50-59	0.1	0.2	0.1	0.3	0.3	0.2	0.2	0.2	0.2	0.3	0.2	0.0	0.1	0.0	0.0	0.0
60 and over	0.1	0.1	0.0	-	-	0.1	0.1	0.1	0.2	0.5	0.1	-	-	-	-	-
Male	0.6	0.9	0.5	1.1	1.1	0.6	0.8	0.6	0.5	0.8	0.4	0.6	0.9	0.6	0.5	0.7
15-19	2.4	4.1	2.0	3.0	3.0	2.6	5.8	1.3	0.6	2.8	0.2	3.1	4.6	2.8	2.5	2.4
20-24	2.2	3.6	1.7	5.5	5.5	2.4	3.1	2.1	2.1	3.6	1.7	2.2	4.4	1.8	1.2	1.5
25-29	1.3	1.2	1.4	2.1	2.1	1.1	1.0	1.2	0.9	0.6	0.9	1.7	0.6	2.0	0.9	1.6
30-34	0.5	1.1	0.1	1.7	1.7	0.3	0.5	0.2	0.3	1.1	-	0.2	0.8	-	0.6	0.8
35-39	0.4	0.7	0.2	1.3	1.3	0.2	0.1	0.2	0.6	0.4	0.7	0.2	1.0	-	0.1	0.3
40-49	0.2	0.3	0.1	0.3	0.3	0.3	0.4	0.3	0.2	0.3	0.1	0.1	0.2	0.1	0.1	0.3
50-59	0.1	0.2	0.1	0.3	0.3	0.2	0.1	0.3	0.2	0.3	0.2	0.1	0.1	0.1	0.0	0.0
60 and over	0.1	0.2	0.1	-	-	0.1	0.1	0.1	0.3	0.8	0.2	-	-	-	-	-
Female	0.7	0.7	0.7	0.7	0.7	0.6	0.8	0.5	0.7	0.6	0.8	0.6	0.6	0.6	1.0	1.1
15-19	2.7	4.0	2.3	5.8	5.8	2.1	2.2	2.1	0.4	2.1	-	2.5	2.3	2.5	5.4	9.4
20-24	4.2	4.2	4.2	3.8	3.8	4.1	4.9	3.6	5.0	3.5	5.6	3.5	2.3	3.8	4.8	6.6
25-29	1.0	1.2	0.8	1.8	1.8	0.8	1.1	0.6	0.6	0.6	0.6	0.7	1.4	0.5	1.7	0.6
30-34	0.5	0.6	0.4	0.4	0.4	0.5	0.8	0.3	0.7	0.8	0.6	0.6	0.7	0.6	0.2	0.5
35-39	0.3	0.4	0.2	0.7	0.7	0.1	0.1	0.1	0.1	0.3	-	0.5	0.7	0.4	0.3	-
40-49	0.1	0.1	0.1	0.1	0.1	0.1	0.0	0.1	0.2	0.1	0.3	0.0	0.1	0.0	0.0	0.0
50-59	0.1	0.3	0.1	0.4	0.4	0.1	0.3	0.0	0.3	0.3	0.3	0.0	0.1	-	-	-
60 and over	0.0	0.1	-	-	-	0.0	0.1	-	0.0	0.1	-	-	-	-	-	-

Considered unemployment rate by sex, it was found that, unemployment rate of male (0.6 per cent) and female (0.7 per cent). The unemployment rate in municipal and areas (0.8 per cent) and non-municipal areas (0.6 per cent). If the regions were taken into account, the rate of unemployment in the Bangkok and the Central showed highest percentage with 0.9 per cent, followed the Northeast and the South 0.6 per cent and the North 0.5 per cent respectively.

Considering on levels of educational attainment of the unemployed person (Table L), it was found that the unemployment rate of persons attained higher level (academic and technical) and

upper secondary level (academic and vocational) were rather high.

FIGURE 6 UNEMPLOYMENT RATES BY LEVEL OF EDUCATIONAL ATTAINMENT

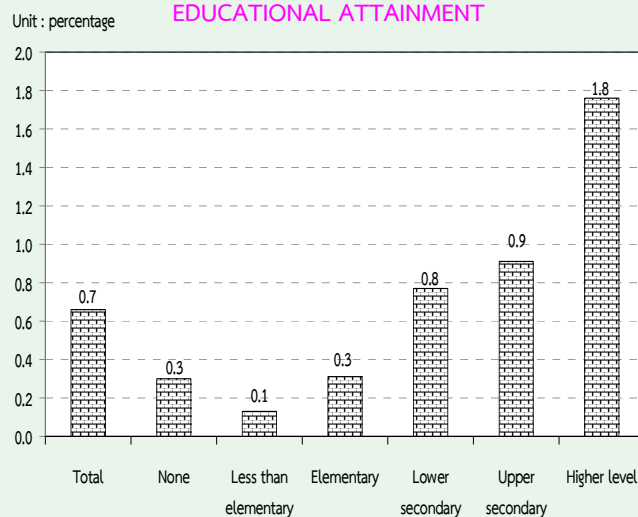


TABLE L UNEMPLOYMENT RATES BY LEVEL OF EDUCATIONAL ATTAINMENT, SEX AND AREA

Area and sex	Level of educational attainment											
	Total	None	Less than elementary	Elementary	Lower secondary	Upper secondary level			Higher level		1/ Others and unknown	
						General/academic	Vocational	Teacher training	Academic	Higher technical education		Teacher training
Total	0.7	0.3	0.1	0.3	0.8	0.9	0.9	-	1.8	2.1	0.6	0.2
Male	0.7	0.4	0.1	0.4	0.8	0.8	1.1	-	1.7	2.0	0.3	0.4
Female	0.7	0.2	0.2	0.3	0.7	1.1	0.5	-	1.9	2.3	0.8	-
M.A.	0.8	0.8	0.2	0.6	0.8	0.8	0.6	-	1.5	1.7	0.4	0.5
Male	0.9	1.2	0.2	0.7	1.0	0.9	0.7	-	1.7	1.2	0.6	1.0
Female	0.7	0.5	0.2	0.4	0.6	0.6	0.4	-	1.3	2.2	0.2	-
Non-M.A.	0.6	0.2	0.1	0.2	0.8	1.0	1.2	-	2.5	2.6	0.8	-
Male	0.5	0.2	0.1	0.2	0.7	0.7	1.4	-	1.7	2.8	-	-
Female	0.7	0.2	0.1	0.2	0.8	1.4	0.7	-	3.0	2.3	1.4	-

1/ Including short course vocational

5. Characteristics of the unemployed labor force

Table M illustrates that the unemployed persons were largely males, 52.5 per cent whereas the corresponding percentage for females was 47.5 per cent. The percentage of unemployed male were

about 57.5 and 42.5 per cent of the total unemployed in municipal area and non-municipal area respectively which was higher than the female (49.0 per cent and 51.0 per cent.)

TABLE M NUMBER AND PERCENTAGE OF UNEMPLOYED PERSONS BY LEVEL OF EDUCATIONAL ATTAINMENT, SEX AND AREA

Area and sex	Level of educational attainment											
	Total	None	Less than elementary	Elementary	Lower secondary	Upper secondary level			Higher level		Others ^{1/}	
						General/academic	Vocational	Teacher training	Academic	Higher technical education		Teacher training
Number ('000)												
Total	262.4	3.5	14.5	27.9	48.2	39.6	11.6	-	68.3	43.4	4.8	0.4
Male	137.7	2.0	6.5	18.3	31.3	18.7	9.1	-	28.3	22.8	0.8	0.1
Female	124.7	1.5	8.1	9.6	16.9	21.0	2.5	-	40.1	20.7	4.1	0.3
Municipal areas	107.6	2.1	4.8	13.5	17.0	11.9	3.6	-	36.7	16.3	1.3	0.4
Male	61.9	1.4	2.2	9.0	12.1	7.8	2.7	-	19.4	6.4	0.8	0.1
Female	45.7	0.7	2.6	4.5	4.8	4.1	0.9	-	17.3	9.9	0.5	0.3
Non-municipal areas	154.8	1.4	9.7	14.4	31.2	27.8	8.0	-	31.6	27.2	3.5	-
Male	75.8	0.6	4.3	9.2	19.2	10.9	6.5	-	8.9	16.4	-	-
Female	79.0	0.8	5.5	5.2	12.1	16.9	1.6	-	22.7	10.8	3.5	-
Percentage												
Total	100.0	1.3	5.5	10.6	18.4	15.1	4.4	-	26.0	16.6	1.8	0.1
Male	100.0	1.5	4.7	13.3	22.7	13.5	6.6	-	20.5	16.6	0.6	0.1
Female	100.0	1.2	6.5	7.7	13.5	16.8	2.0	-	32.1	16.6	3.3	0.3
Municipal areas	100.0	2.0	4.5	12.6	15.8	11.1	3.3	-	34.1	15.1	1.2	0.4
Male	100.0	2.3	3.6	14.6	19.6	12.6	4.3	-	31.3	10.3	1.2	0.2
Female	100.0	1.6	5.7	9.8	10.5	8.9	2.0	-	37.9	21.6	1.2	0.7
Non-municipal areas	100.0	0.9	6.3	9.3	20.2	17.9	5.2	-	20.4	17.6	2.3	-
Male	100.0	0.8	5.6	12.2	25.3	14.3	8.5	-	11.7	21.6	-	-
Female	100.0	1.0	6.9	6.5	15.3	21.4	2.0	-	28.8	13.6	4.5	-

^{1/} Including short course vocational

The majority of the unemployed persons show with 59.0 per cent were in non-municipal area because these areas constituted a larger part of the total labor force. About 55.0 per cent of the total

unemployed males were in non-municipal area while it was 63.4 per cent for females. However, the percentage of unemployed males and females were lower in busy season than the slack season.

The unemployed persons completed in some elementary education and none constituted the highest proportion 17.4 per cent of the total unemployed, the secondary level 37.9 per cent and higher level 44.4 per cent. In municipal area they accounted higher than non-municipal area for elementary and none (19.1 per cent compared with 16.5 per cent). While in non-municipal area, they accounted higher than municipal area for higher level (50.4 per cent compared with 40.3 per cent).

6. Hours worked

Data on hours worked and additional hours available for work have been obtained in respect of all the employed persons. In the case of persons who had job but did not work at all during the survey week, the question on hours

worked was interpreted as the zero hours per week. The data on hours worked included hours worked on all occupations, principal as well as others.

The data summarized in Table N show that about 35.3 per cent of the employed persons worked 50 hours or more per week. About 50.2 per cent of employed persons worked 35-49 hours per week. On the other hand, about 85.5 per cent of employed person worked 35 hours or more per week and they might be classified as fully employed. About 14.0 per cent, for worked less than 35 hours per week and may be regarded as under-employed. For employed persons who did not work during the survey week (0 hours) but had regular job, which accounted only 0.5 per cent.

TABLE N NUMBER AND PERCENTAGE OF EMPLOYED PERSONS BY HOURS WORKED PER WEEK

Hours work per week	Employed persons		Persons available for additional work	
	Number (in thousands)	Percentage	Number (in thousands)	Percentage (as compared to employed)
Total	39,317.2	100.0	406.1	1.0
0 hours	185.5	0.5	26.4	14.2
1 - 9 hours	208.3	0.5	27.0	13.0
10 - 19 hours	974.5	2.5	58.3	6.0
20 - 29 hours	2,546.6	6.5	112.8	4.4
30 - 34 hours	1,765.5	4.5	53.7	3.0
35 - 39 hours	4,087.1	10.4	35.2	0.9
40 - 49 hours	15,657.5	39.8	74.1	0.5
50 hours and over	13,892.3	35.3	18.6	0.1

The percentage of employed persons who were available for additional work, which is also an indicator for under-employment, accounted for about 1.0 per cent. Of the employed persons who worked less than 35 hours per week, 4.5 per cent desired and were available for additional work. The details of hours worked by occupation, industry and work status are illustrated in the Statistical Tables (Table 8-10).

7. Wages and salaries

Data on wages and salaries have been collected in respect of all employees in accordance with the system applicable to each case and converted into the equivalent monthly wages and salaries. The data have been tabulated by industry, sex and area separately for government and private employees (see Table 15 and 16 in the statistical tables). In this chapter, data on the number of male and female employees by wage level or salary (not including supplementary earnings) and area are presented in Table O.

On the whole, about 42.1 per cent of 16.6 million employees had monthly wage or salary of Baht 5,501-10,000, around 29.4 per cent had monthly wage or salary of Baht 2,501-5,500, about 24.0 percent had over Baht 10,000 per month and about 4.3 per cent received less than Baht 2,500 per month.

The majority of employees in municipal area had higher level of wage or salary than their counterpart in the other area. For instance, only about 19.9 per cent of employees in municipal area received monthly wage or salary of below Baht 5,501 whereas the corresponding figure in non-municipal area was 44.7 per cent. Around 79.9 per cent of employees in municipal area earned more than Baht 5,500 compared with 55.2 per cent in non-municipal area. Moreover, about 35.3 per cent of employees in municipal area earned more than Baht 10,000 per month while the percentages in non-municipal area was only 14.8 per cent.

FIGURE 7 PERCENTAGE OF EMPLOYEES BY WAGE OR SALARY / MONTH

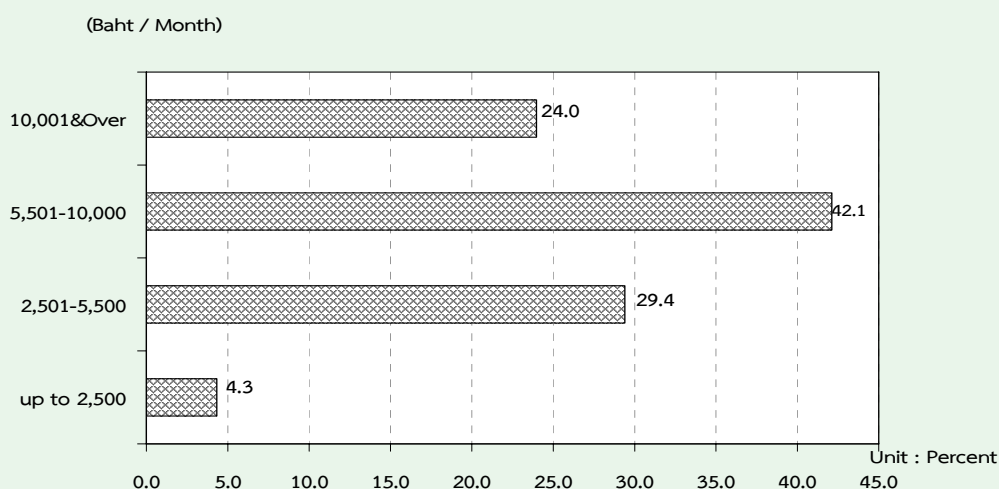


TABLE O NUMBER AND PERCENTAGE OF EMPLOYEES BY WAGE/SALARY, SEX AND AREA

Monthly wage/ Salary level (Baht)	Whole kingdom			Municipal areas			Non- municipal areas		
	Total	Government sector	Private sector	Total	Governe nt sector	Private sector	Total	Governe nt sector	Private sector
Number ('000)									
Total	16,576.2	3,709.5	12,866.7	7,316.8	1,733.4	5,583.4	9,259.4	1,976.1	7,283.3
Up to 2,500	716.4	18.3	698.1	136.0	5.8	130.2	580.4	12.5	567.9
2,501-5,500	4,871.2	467.3	4,403.9	1,319.1	102.8	1,216.3	3,552.1	364.5	3,187.6
5,501-10,000	6,981.9	1,293.0	5,688.9	3,245.9	494.8	2,751.1	3,736.0	798.2	2,937.8
10,001 & Over	3,973.7	1,922.0	2,051.7	2,599.8	1,125.7	1,474.1	1,373.9	796.3	577.6
Unknown	33.0	8.9	24.1	16.0	4.3	11.7	16.9	4.5	12.4
Male	9,063.3	1,917.3	7,146.0	3,824.7	879.9	2,944.8	5,238.6	1,037.4	4,201.2
Up to 2,500	329.1	5.1	324.0	61.9	2.4	59.5	267.2	2.7	264.5
2,501-5,500	2,542.1	264.9	2,277.2	641.6	57.1	584.5	1,900.5	207.8	1,692.7
5,501-10,000	4,018.7	641.8	3,376.9	1,748.8	241.3	1,507.5	2,269.9	400.5	1,869.4
10,001 & Over	2,156.3	1,000.4	1,155.9	1,366.0	577.1	788.9	790.3	423.4	366.9
Unknown	17.2	5.1	12.1	6.4	2.1	4.4	10.7	3.0	7.7
Female	7,512.9	1,792.2	5,720.7	3,492.1	853.5	2,638.6	4,020.8	938.7	3,082.1
Up to 2,500	387.4	13.2	374.1	74.2	3.5	70.7	313.2	9.8	303.5
2,501-5,500	2,329.1	202.4	2,126.7	677.5	45.7	631.8	1,651.6	156.7	1,494.9
5,501-10,000	2,963.2	651.3	2,312.0	1,497.1	253.5	1,243.6	1,466.1	397.8	1,068.4
10,001 & Over	1,817.4	921.5	895.9	1,233.8	548.6	685.2	583.6	373.0	210.7
Unknown	15.8	3.8	12.0	9.6	2.2	7.4	6.2	1.5	4.7
Percentage									
Total	100.0	100.0	100.0	100.0	100.0	100.0	100.0	100.0	100.0
Up to 2,500	4.3	0.5	5.4	1.9	0.3	2.3	6.3	0.6	7.8
2,501-5,500	29.4	12.6	34.2	18.0	5.9	21.8	38.4	18.5	43.8
5,501-10,000	42.1	34.9	44.2	44.4	28.6	49.3	40.4	40.4	40.3
10,001 & Over	24.0	51.8	16.0	35.5	64.9	26.4	14.8	40.3	7.9
Unknown	0.2	0.2	0.2	0.2	0.3	0.2	0.2	0.2	0.2
Male	100.0	100.0	100.0	100.0	100.0	100.0	100.0	100.0	100.0
Up to 2,500	3.6	0.3	4.5	1.6	0.3	2.0	5.1	0.3	6.3
2,501-5,500	28.1	13.8	31.9	16.8	6.5	19.9	36.3	20.0	40.3
5,501-10,000	44.3	33.5	47.3	45.7	27.4	51.2	43.3	38.6	44.5
10,001 & Over	23.8	52.2	16.2	35.7	65.6	26.8	15.1	40.8	8.7
Unknown	0.2	0.3	0.2	0.2	0.2	0.2	0.2	0.3	0.2
Female	100.0	100.0	100.0	100.0	100.0	100.0	100.0	100.0	100.0
Up to 2,500	5.2	0.7	6.5	2.1	0.4	2.7	7.8	1.0	9.9
2,501-5,500	31.0	11.3	37.2	19.4	5.4	23.9	41.1	16.7	48.5
5,501-10,000	39.4	36.3	40.4	42.9	29.7	47.1	36.5	42.4	34.7
10,001 & Over	24.2	51.4	15.7	35.3	64.3	26.0	14.5	39.7	6.8
Unknown	0.2	0.2	0.2	0.3	0.3	0.3	0.2	0.2	0.2

It was observed that, on the whole, government employees got higher level of monthly wage or salary than the private ones. This partly because, in this survey, the private employee also included those daily wage employees and laborers who usually earn rather low income. About 39.6 per cent of the private employees earned less than Baht 5,501 a month as compared with 13.1 per cent of the government employees. On the other hand, the government employees who received over Baht 5,500 per month accounted for about 86.7 per cent of the total government employees while the

private employees only accounted for 60.2 per cent.

8. Supplementary benefits

Apart from data on basic wages and salaries, information was also collected on receipt of supplementary benefits in cash such as bonuses and overtime payments, and in kind such as food, clothing, housing, and others; the amount received have not however been ascertained. The data on number of employees receiving benefits are summarized in Table P.

TABLE P NUMBER AND PERCENTAGE OF PRIVATE EMPLOYEES AND GOVERNMENT EMPLOYEES BY RECEIVING SUPPLEMENTARY BENEFITS, AREA AND SEX

		(In thousands)						
Sector, area and sex	Total employees	Number of employees receiving supplementary benefits						
		Bonus	Overtime	Other Cash	Food	Clothing	Housing	Others
Total	5,305.5	77.3	1,844.6	2,598.0	1,340.8	84.7	788.2	524.6
		(1.5)	(34.8)	(49.0)	(25.3)	(1.6)	(14.9)	(9.9)
Male	2,719.7	38.7	959.5	1,320.7	591.4	46.7	444.2	242.5
		(1.4)	(35.3)	(48.6)	(21.7)	(1.7)	(16.3)	(8.9)
Female	2,585.8	38.6	885.1	1,277.3	749.4	38.0	344.1	282.0
		(1.5)	(34.2)	(49.4)	(29.0)	(1.5)	(13.3)	(10.9)
Private sector	3,849.3	55.4	1,604.6	1,473.0	1,297.9	76.9	547.1	487.0
		(1.4)	(41.7)	(38.3)	(33.7)	(2.0)	(14.2)	(12.7)
Male	1,989.4	29.5	848.8	756.4	582.3	40.8	292.8	221.9
		(1.5)	(42.7)	(38.0)	(29.3)	(2.0)	(14.7)	(11.2)
Female	1,859.9	25.9	755.7	716.6	715.6	36.1	254.4	265.1
		(1.4)	(40.6)	(38.5)	(38.5)	(1.9)	(13.7)	(14.3)
Government sector	1,456.2	22.0	240.1	1,125.0	42.9	7.8	241.1	37.6
		(1.5)	(16.5)	(77.3)	(2.9)	(0.5)	(16.6)	(2.6)
Male	730.4	9.2	110.7	564.2	9.2	6.0	151.4	20.6
		(1.3)	(15.2)	(77.3)	(1.3)	(0.8)	(20.7)	(2.8)
Female	725.9	12.7	129.4	560.8	33.8	1.8	89.7	16.9
		(1.8)	(17.8)	(77.3)	(4.7)	(0.3)	(12.4)	(2.3)

1/

TABLE P NUMBER AND PERCENTAGE OF PRIVATE EMPLOYEES AND GOVERNMENT EMPLOYEES BY RECEIVING SUPPLEMENTARY BENEFITS, AREA AND SEX

(In thousands)

Sector, area and sex	Total employees	Number of employees receiving supplementary benefits						
		Bonus	Overtime	Other cash	Food	Clothing	Housing	Others
Private sector								
Municipal areas	1,848.6	22.1	708.4	728.0	641.6	36.8	351.5	176.2
		(1.2)	(38.3)	(39.4)	(34.7)	(2.0)	(19.0)	(9.5)
Male	944.9	11.3	402.3	375.0	267.8	20.7	158.6	87.6
		(1.2)	(42.6)	(39.7)	(28.3)	(2.2)	(16.8)	(9.3)
Female	903.8	10.8	306.1	353.1	373.8	16.2	193.0	88.6
		(1.2)	(33.9)	(39.1)	(41.4)	(1.8)	(21.4)	(9.8)
Non-municipal areas	2,000.7	33.2	896.2	745.0	656.3	40.1	195.6	310.8
		(1.7)	(44.8)	(37.2)	(32.8)	(2.0)	(9.8)	(15.5)
Male	1,044.5	18.1	446.5	381.5	314.5	20.1	134.2	134.3
		(1.7)	(42.8)	(36.5)	(30.1)	(1.9)	(12.8)	(12.9)
Female	956.2	15.1	449.7	363.5	341.8	20.0	61.4	176.5
		(1.6)	(47.0)	(38.0)	(35.7)	(2.1)	(6.4)	(18.5)
Government sector								
Municipal areas	707.7	8.2	135.7	539.0	10.5	4.0	162.6	18.1
		(1.2)	(19.2)	(76.2)	(1.5)	(0.6)	(23.0)	(2.6)
Male	371.4	4.4	66.5	277.5	2.5	2.2	111.4	7.6
		(1.2)	(17.9)	(74.7)	(0.7)	(0.6)	(30.0)	(2.0)
Female	336.3	3.7	69.2	261.5	7.9	1.8	51.3	10.5
		(1.1)	(20.6)	(77.8)	(2.4)	(0.5)	(15.2)	(3.1)
Non-municipal areas	748.6	13.8	104.4	586.0	32.5	3.8	78.5	19.5
		(1.8)	(13.9)	(78.3)	(4.3)	(0.5)	(10.5)	(2.6)
Male	359.0	4.8	44.2	286.8	6.6	3.8	40.0	13.0
		(1.3)	(12.3)	(79.9)	(1.8)	(1.1)	(11.2)	(3.6)
Female	1,138.2	22.8	164.6	885.2	58.3	3.8	116.9	25.9
		(2.0)	(14.5)	(77.8)	(5.1)	(0.3)	(10.3)	(2.3)

1/ One employee can receive more than 1 type of supplementary benefits.

Certain types of supplementary benefits such as overtime and clothing seem to be more common in the private sector than in the government sector. Other cash housing and bonus however, seem to be more common in the government sector than in the private sector. The private employees in non-municipal area received more supplementary benefits such as overtime and bonus than those in municipal area, for instance, about 44.8 per cent and 1.7 per cent respectively.

The private employees in municipal area received more supplementary benefits such as, other cash, food supplies and

housing than those in non-municipal area or about 39.4 per cent for other cash, 34.7 per cent for food supplies and 19.0 per cent for housing. The government employees in municipal area received more supplementary benefits such as overtime, housing and clothing than those in non-municipal area. For instance about 19.2, 23.0, and 0.6 per cent respectively. The government employees in non-municipal area received more supplementary benefits, such as other cash, food supplies and bonus than those in municipal area or about 78.3, and 4.3 per cent and 1.8 per cent respectively.
