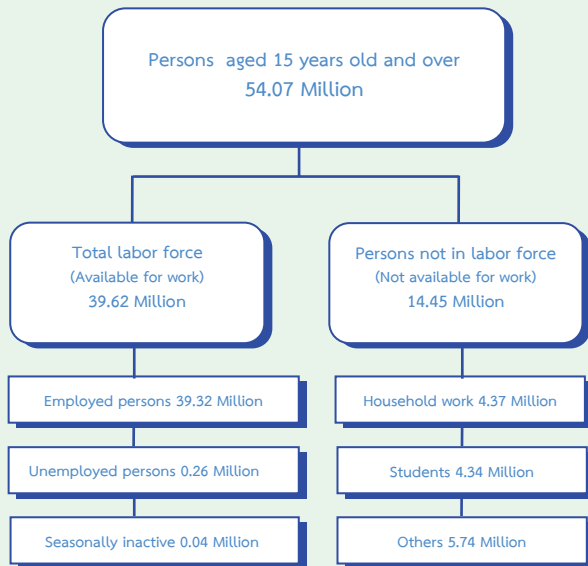


EXECUTIVE SUMMARY

LABOR FORCE SURVEY IN THE 3rd QUARTER OF 2011

CHART OF THE NUMBER OF POPULATION BY LABOR FORCE
THE LABOR FORCE SURVEY , QUARTER 3 : 2011



Some major findings of Labor Force Survey in the third quarter of 2011, conducted by NSO showed that for people aged 15 years and over of 54.07 million persons, 39.62 million persons were in the labor force (39.32 million persons were employed, 0.26 million persons were unemployed and 0.04 million persons were seasonally inactive labor force) and 14.45 million persons were not in the labor force.

Comparing to the same period of 2010, the number of persons employed increased by 0.63 million persons. (from 38.69 million persons to 39.32 million persons) or about 1.6%. It was found that the number of employed persons in agriculture sector increased by 70 thousand million persons (from 15.41 million persons to 16.11 million persons). Those in non – agriculture sector decreased by 70 thousand persons. (from 23.28 million persons to 23.21 million persons). This decrement was found in various industries, Wholesale and retail about 0.21 million persons, Transport about 0.16 million persons, Public administration about 60 thousand persons, But Construction increased about 80 thousand persons, Hotel and restaurants about 60 thousand persons, and Manufacturing about 40 thousand persons.

FIGURE 1 COMPARISON OF THE NUMBER OF EMPLOYED PERSONS BETWEEN QUARTER 3 OF 2010 AND 2011 BY INDUSTRY

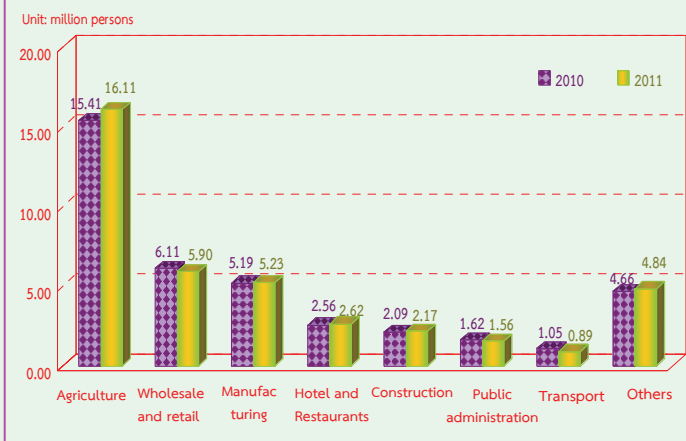
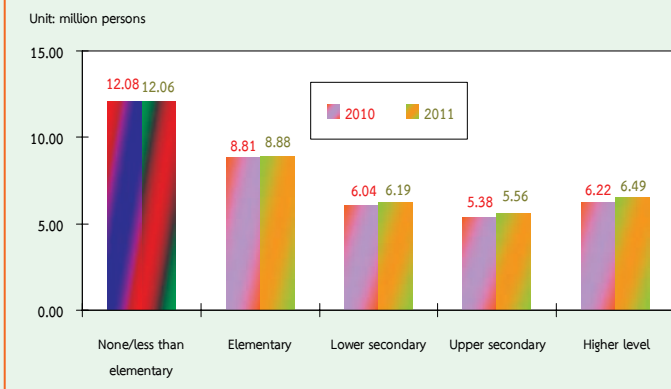
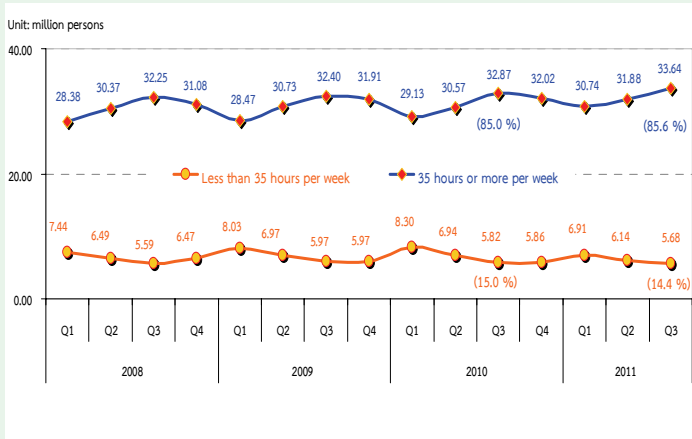


FIGURE 2 COMPARISON OF THE NUMBER OF EMPLOYED PERSONS BETWEEN QUARTER 3 OF 2010 AND 2011 BY LEVEL OF EDUCATION



Comparing the level of educational attainment of the employed persons to the same period of 2010, it was found that the number of employed persons with higher level increased by 0.27 million persons, followed by upper secondary level increased by 0.18 million persons, lower secondary level rose by 0.15 million persons, elementary level increased by 70 thousand persons. But employed persons with no education and less than elementary decreased by 20 thousand persons.

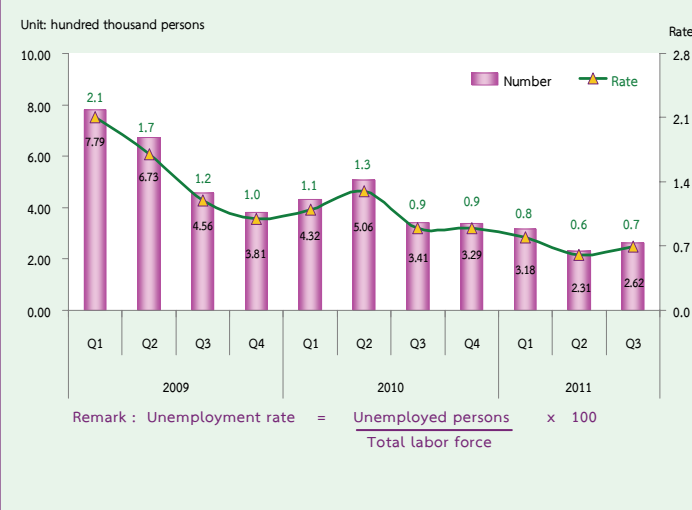
FIGURE 3 THE NUMBER OF EMPLOYED PERSONS



Regarding working hours per week of employed persons in the third quarter of 2011, it was showed that about 33.64 million persons or 85.6% of the total employed persons worked more than 35 hours per week. On the other hand, about 5.68 million persons or 14.4% of total employed persons worked less than 35 hours per week.

Comparing to the same period of 2010, the number of employed persons working more than 35 hours per week which was considered as a full time worker increased about 77 thousand persons but those working less than 35 hours per week or part time worker decreased about 0.14 million persons.

FIGURE 4 THE NUMBER OF UNEMPLOYED PERSONS AND UNEMPLOYMENT RATE OF 2009 TO 2011

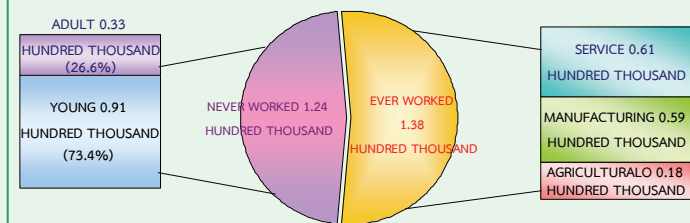


From the 3rd quarter of 2011, there were 0.26 million persons or 0.7% of the unemployment rate. Comparing to the same period of the last year, the number of unemployed persons decreased by 79 thousand persons (from 0.34 million persons to 0.26 million persons). Considering by age group, there were 0.14 million persons in a youth group (15-24 years old) or 2.9% of the unemployment rate and 0.12 million persons in adult group (25 years and over) or 0.3% of the unemployment rate. Comparing to the same period of 2010, the youth unemployed persons (15-24 years old) decreased by 28 thousand persons (from 0.17 million persons to 0.14 million persons), while the adult group (25 years and over) decreased by 51 thousand persons (from 0.17 million persons to 0.12 million persons).

FIGURE 5 UNEMPLOYMENT RATE OF 2008 TO 2011 BY AGE GROUP

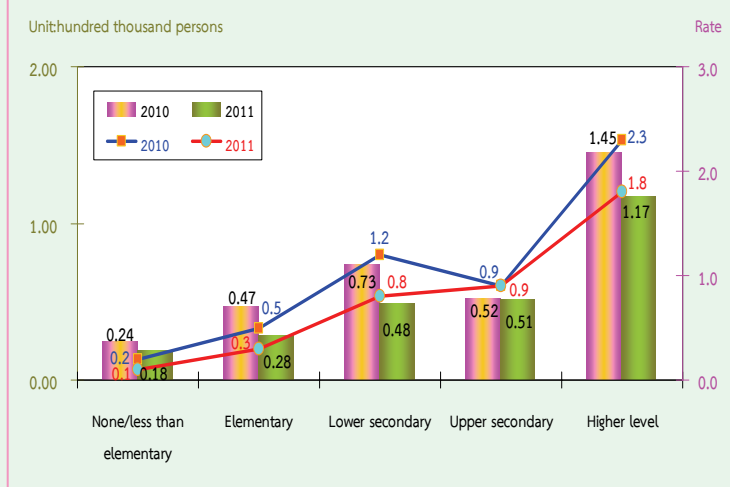


FIGURE 6 NUMBER OF UNEMPLOYED PERSONS BY EXPERIENCE OF WORK QUARTER 3 : 2011



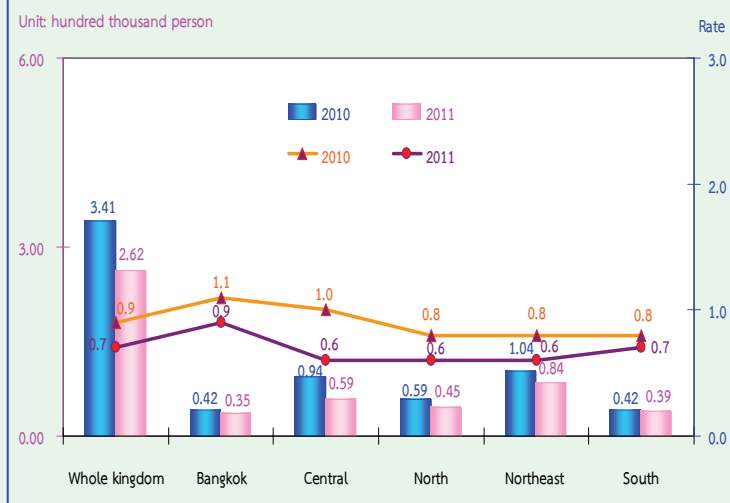
Concerning by experience of work, there were about 0.26 million unemployed persons in the third quarter of 2011, of which about 0.12 million persons had never worked. With this number, 33 thousand persons were from the youth group (15-24 years old), and 91 thousand persons from the adult group (25 years and over). About 0.14 million persons had ever worked. There were 61 thousand unemployed persons from the service sector, 59 thousand persons from the manufacturing and the least was from the agriculture sector of about 18 thousand persons.

FIGURE 7 COMPARISON OF THE NUMBER AND UNEMPLOYMENT RATES BY LEVEL OF EDUCATION, BETWEEN QUARTER 3 OF 2010 AND 2011



For the level of educational attainment of the unemployed persons, it was showed that the number of unemployed persons with higher level was highest (0.12 million persons), followed by upper secondary level (51 thousand persons), lower secondary level 48 thousand persons, elementary level (28 thousand persons) and unemployed persons with no education and less than elementary were 18 thousand persons.

FIGURE 8 COMPARISON OF THE NUMBER AND UNEMPLOYMENT RATES BY REGION, BETWEEN QUARTER 3 OF 2010 AND 2011



Comparing the number of unemployment by region with the same period of the last year, it was showed that the number of unemployed persons in almost all regions were decreased. The Central decreased by 35 thousand persons, followed by the North decreased by 14 thousand persons, Bangkok decreased by 7 thousand persons, the South decreased by 3 thousand persons and the Northeast decreased by 2 thousand persons.

Concerning unemployment rate, it was showed that the overall unemployment rates decreased from 0.9% to 0.7% followed by, the Central (from 1.0% to 0.6%), Bangkok (from 1.1% to 0.9%), the North (from 0.8% to 0.6%), the Northeast (from 0.8% to 0.6%) and the South (from 0.8% to 0.7%).