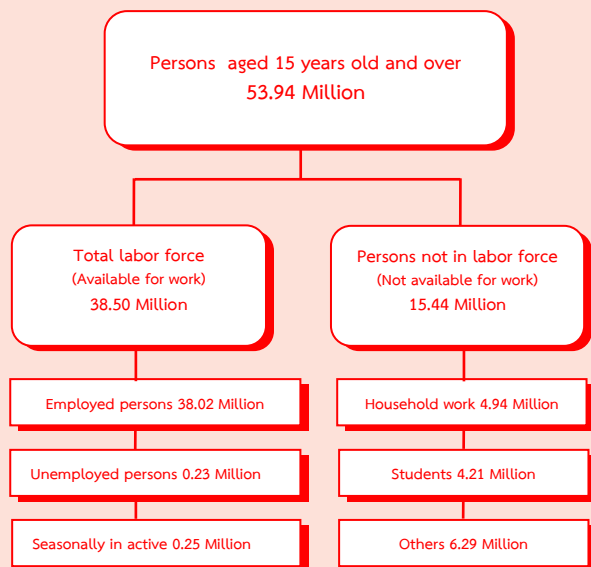


EXECUTIVE SUMMARY

LABOR FORCE SURVEY IN THE 2nd QUARTER OF 2011

CHART OF THE NUMBER OF POPULATION BY LABOR FORCE
THE LABOR FORCE SURVEY , QUARTER 2 : 2011



Some major findings of Labor Force Survey in the second quarter of 2011, conducted by NSO showed that for people aged 15 years and over of 53.94 million persons, 38.50 million persons were in the labor force (38.02 million persons were employed, 0.23 million persons were unemployed and 0.25 million persons were seasonally inactive labor force) and 15.44 million persons were not in the labor force.

Comparing to the same period of 2010, the number of persons employed increased by 0.51 million persons. (from 37.51 million persons to 38.02 million persons) or about 1.3%. It was found that the number of employed persons in agriculture sector increased by 0.86 million persons (from 13.41 million persons to 14.27 million persons). Those in non – agriculture sector decreased by 0.35 million persons. (from 24.10 million persons to 23.75 million persons). This decrement was found in various industries, Wholesale and retail about 0.43 million persons, Transport about 0.23 million persons, Construction about 0.18 million persons, Manufacturing about 0.11 million persons, and Hotel and restaurants about 60 thousand persons.

FIGURE 1 COMPARISON OF THE NUMBER OF EMPLOYED PERSONS
BETWEEN QUARTER 2 OF 2010 AND 2011 BY INDUSTRY

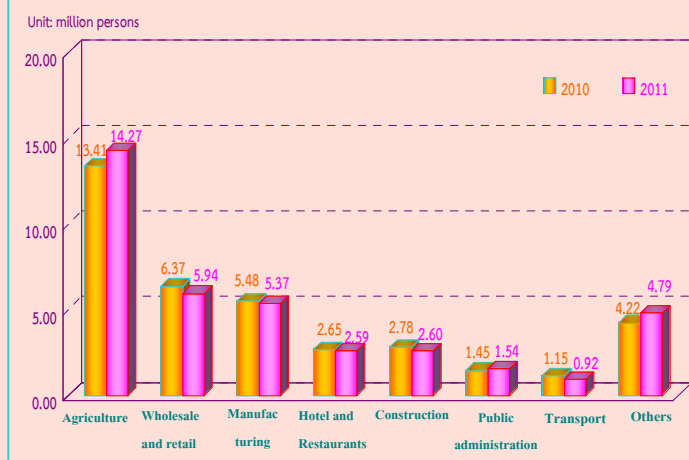
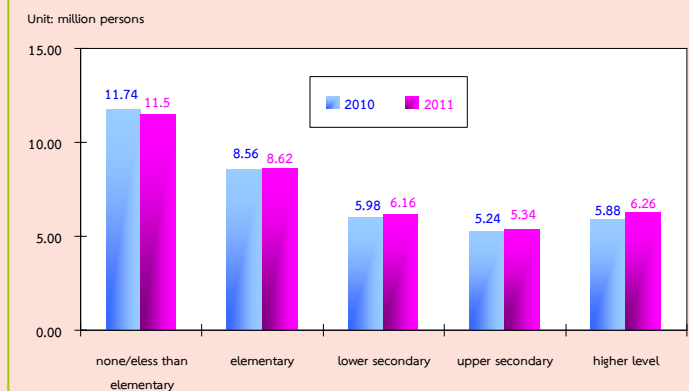
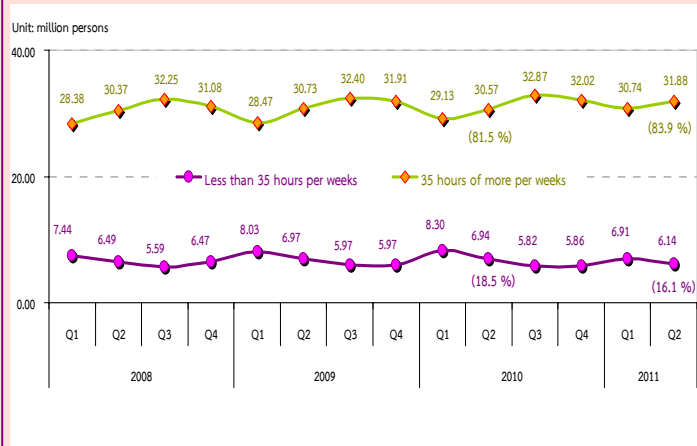


FIGURE 2 COMPARISON OF THE NUMBER OF EMPLOYED PERSONS
BETWEEN QUARTER 2 OF 2010 AND 2011 BY LEVEL OF EDUCATION



Comparing to the same period of 2010, for level of educational attainment of the employed persons .It was found that the number of employed persons with higher level increased by 0.38 million persons, followed by lower secondary level increased by 0.18 million persons, upper secondary level rose by 0.10 million persons, and elementary level increased by 60 thousand persons. But employed persons with no education and less than elementary decreased by 0.24 million persons.

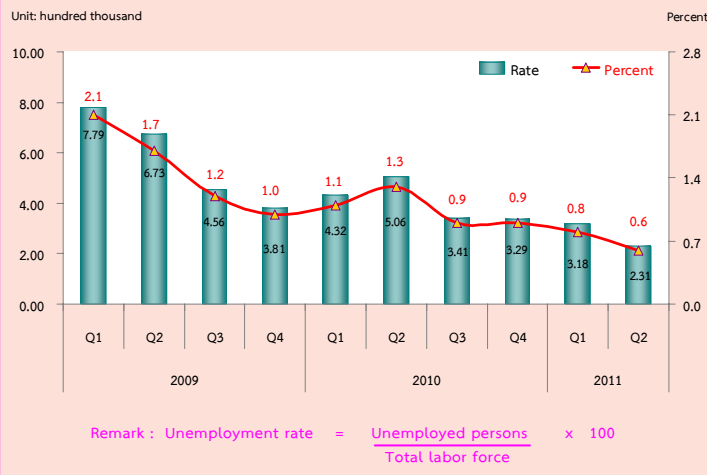
FIGURE 3 THE NUMBER OF EMPLOYED PERSONS OF 2008 TO 2011 BY HOURS WORKED



Regarding working hours per day of employed persons in the second quarter of 2011 showed that about 31.88 million persons or 83.9% of the total employed persons worked more than 35 hours per weeks. On the other word, about 6.14 million persons or 16.1% of total employed persons worked less than 35 hours per weeks.

Comparing to the same period of 2010, the results revealed that the employed persons working more than 35 hours per weeks which considered as a full time worker of increased, about 1.31 million persons but those working less than 35 hours per weeks or part time worker decreased, of about 0.80 million persons.

FIGURE 4 THE NUMBER OF UNEMPLOYED PERSONS AND UNEMPLOYMENT RATE OF 2009 TO 2011



From the 2nd quarter of 2011, there were 0.23 million persons or 0.6% of the unemployment rate. Comparing to the same period of last year, the number of unemployed persons decreased by 0.28 million persons (from 0.51 million persons to 0.23 million persons). Considering by age group, there were 0.11 million persons in a youth group (15-24 years old) or 2.2 % of the unemployment rate and 0.13 million persons in adult group (25 years and over) or 0.4% of the unemployment rate. Comparing to the same period of 2010 the unemployed persons decreased by 0.15 million persons (from 0.26 million persons to 0.11 million persons) for a youth group (15-24 years old). The adult group (25 years and over) decreased by 0.12 million persons (from 0.25 million persons to 0.13 million persons).

FIGURE 5 UNEMPLOYMENT RATE OF 2008 TO 2011 BY AGE GROUP

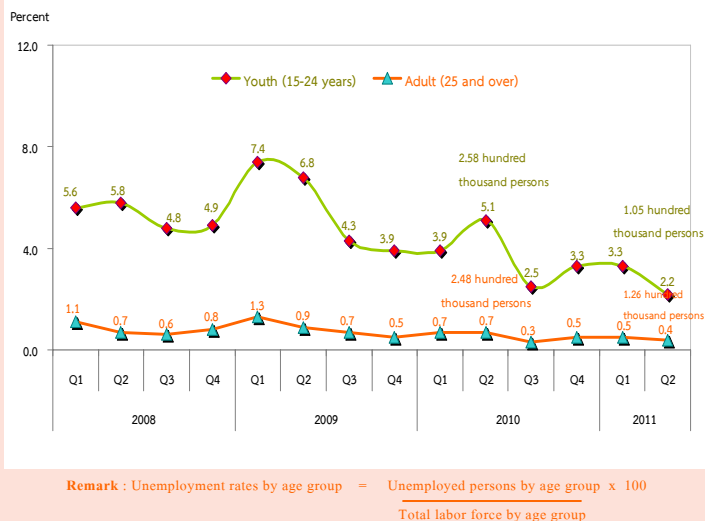
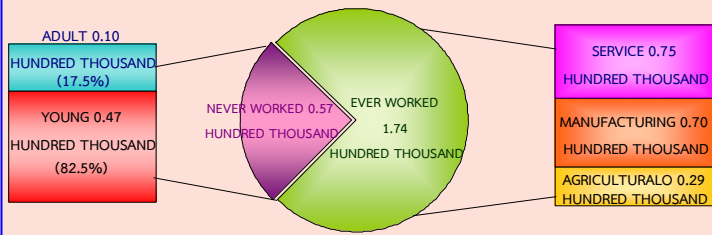
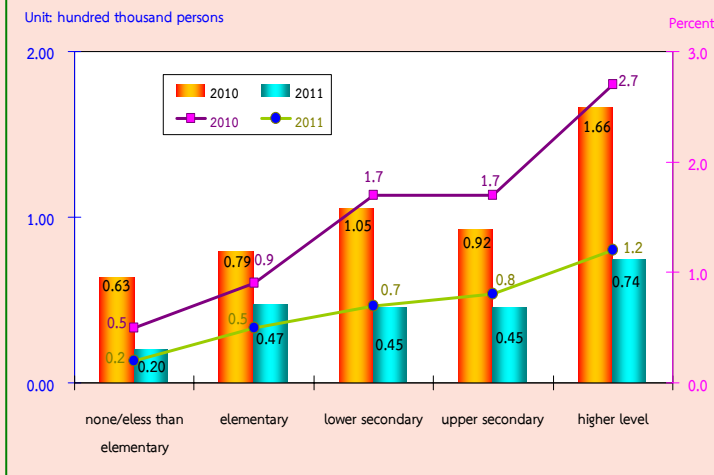


FIGURE 6 NUMBER OF UNEMPLOYED PERSONS BY EXPERIENCE OF WORK QUARTER 2 : 2011



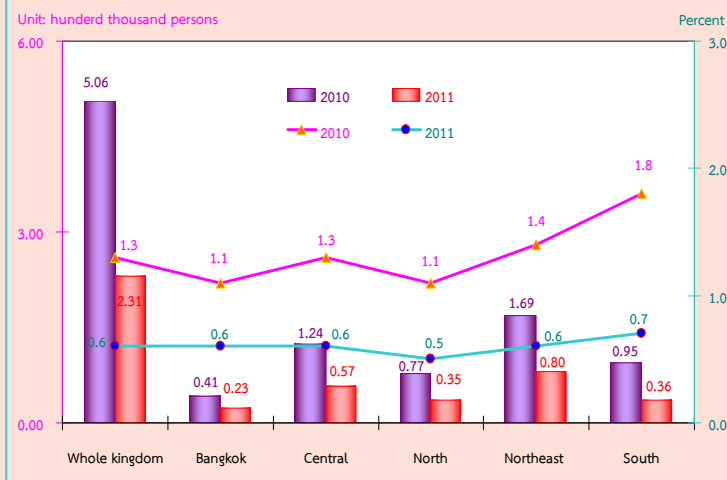
Concerning unemployed persons by experience of work, in the second quarter of 2011, about 0.23 million persons, had never worked about 57 thousand persons, had never worked with this number 47 thousand persons were from the youth group (15-24 years old), and 10 thousand persons from the adult group (25 years and over). About 0.17 million persons had ever worked. There were unemployed persons from the service sector was 75 thousand persons, from the manufacturing 70 thousand persons, and the least was from the agriculture sector of about 29 thousand persons.

FIGURE 7 COMPARISON NUMBER AND UNEMPLOYMENT RATES BY LEVEL OF EDUCATION, BETWEEN QUARTER 2 OF 2010 AND 2011



For level of educational attainment of the unemployed persons, it showed that the number of unemployed persons with higher level was highest 74 thousand persons, followed by elementary level 47 thousand persons, lower secondary level and upper secondary level were the same 45 thousand persons and unemployed persons with no education and less than elementary were 20 thousand persons.

FIGURE 8 COMPARISON OF THE NUMBER AND UNEMPLOYMENT RATES BY REGION, BETWEEN QUARTER 1 OF 2010 AND 2011



Comparing the number of unemployment by region with the same period of the last year, showed that almost all regions were unemployed decreased. The Northeast decreased by 89 thousand persons, followed by the Central decreased by 67 thousand persons, the South decreased by 59 thousand persons, the North decreased by 42 thousand persons and the Bangkok decreased by 18 thousand persons.

Concerning unemployment rate, it showed that the overall unemployment rates decreased by 0.7 (from 1.3% to 0.6%). The South decreased by 1.1 (from 1.8% to 0.7%) the Northeast decreased by 0.8 (from 1.4% to 0.6%), the Central decreased by 0.7 (from 1.3% to 0.6%), the North decreased by 0.6 (from 1.1% to 0.5%) and the Bangkok decreased by 0.5 (from 1.1% to 0.6%).