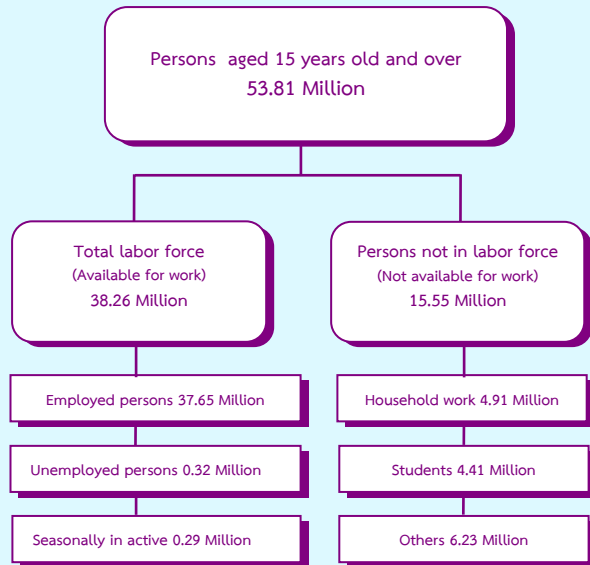


EXECUTIVE SUMMARY

LABOR FORCE SURVEY IN THE 1st QUARTER OF 2011

CHART OF THE NUMBER OF POPULATION BY LABOR FORCE
THE LABOR FORCE SURVEY , QUARTER 1 : 2011



Some major findings of Labor Force Survey in the first quarter of 2011, conducted by NSO showed that for people aged 15 years and over of 53.81 million persons, 38.26 million persons were in the labor force (37.65 million persons were employed, 0.32 million persons were unemployed and 0.29 million persons were seasonally inactive labor force) and 15.55 million persons were not in the labor force.

Comparing to the same period of 2010, the number of persons employed increased by 0.22 million persons. (from 37.43 million persons to 37.65 million persons) or about 0.6%. It was found that the number of employed persons in agriculture sector increased by 2.73 million persons (from 13.14 million persons to 15.87 million persons). Those in non – agriculture sector decreased by 2.51 million persons. (from 24.29 million persons to 21.78 million persons). This decrement was found in various industries, Hotel and restaurants about 0.29 million persons. Wholesale and retail and Transport decreased with the same about 0.18 million persons and Manufacturing decreased by 0.11 million persons.

FIGURE 1 COMPARISON OF THE NUMBER OF EMPLOYED PERSONS
BETWEEN QUARTER 1 OF 2010 AND 2011 BY INDUSTRY

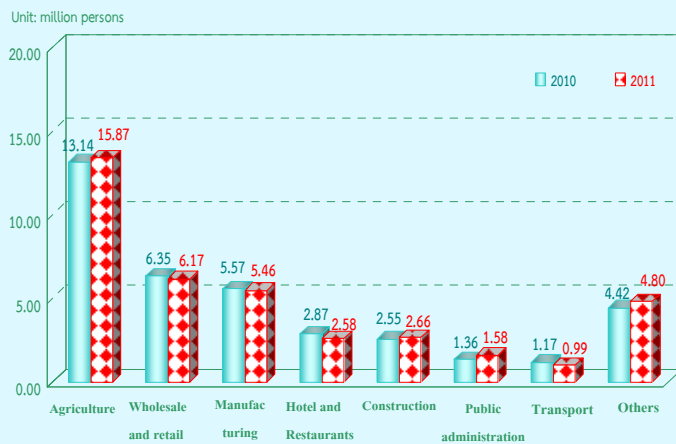
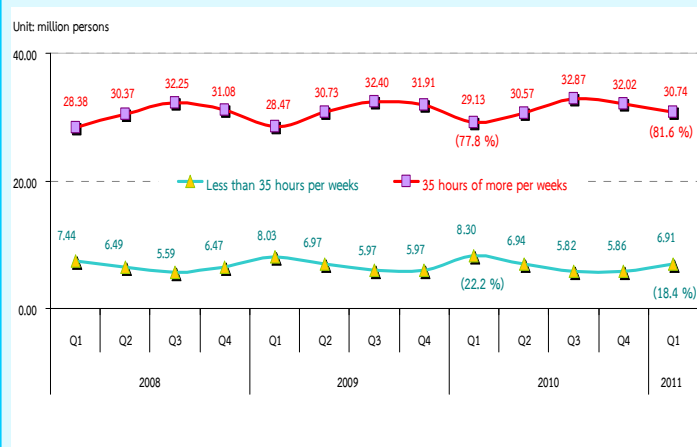


FIGURE 2 COMPARISON OF THE NUMBER OF EMPLOYED PERSONS
BETWEEN QUARTER 1 OF 2010 AND 2011 BY LEVEL OF EDUCATION



Comparing to the same period of 2010, for level of educational attainment of the employed persons .It was found that the number of employed persons with higher level increased by 0.45 million persons, followed by upper secondary level increased by 0.15 million persons and lower secondary level rose by 0.10 million persons. But employed persons with no education and less than elementary and elementary decreased by 0.39 million persons and 90 thousand persons respectively.

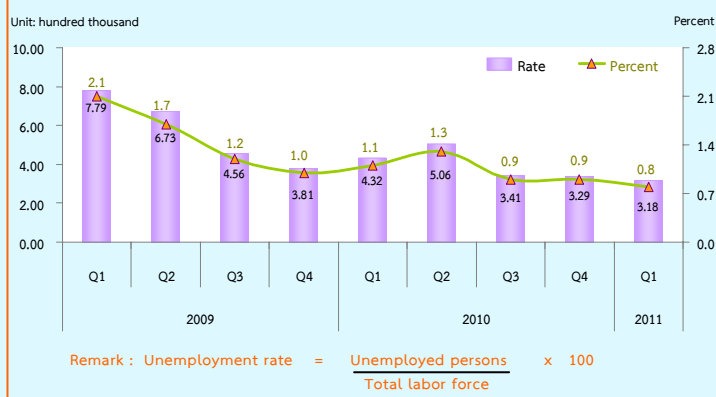
FIGURE 3 THE NUMBER OF EMPLOYED PERSONS OF 2008 TO 2011 BY HOURS WORKED



Regarding working hours per day of employed persons in the first quarter of 2011 showed that about 30.74 million persons or 81.6% of the total employed persons worked more than 35 hours per weeks. On the other word, about 6.91 million persons or 18.4% of total employed persons worked less than 35 hours per weeks.

Comparing to the same period of 2010, the results revealed that the employed persons working more than 35 hours per weeks which considered as a full time worker of increased, about 1.61 million persons but those working less than 35 hours per weeks or part time worker decreased, of about 1.39 million persons.

FIGURE 4 THE NUMBER OF UNEMPLOYED PERSONS AND UNEMPLOYMENT RATE OF 2009 TO 2011

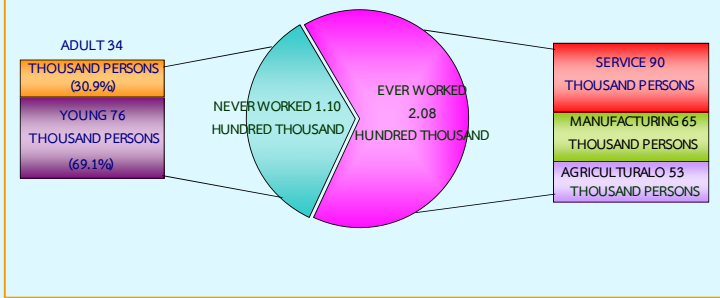


From the 1st quarter of 2011, there were 0.32 million persons or 0.8% of the unemployment rate. Comparing to the same period of last year, the number of unemployed persons decreased by 0.11 million persons (from 0.43 million persons to 0.32 million persons). Considering by age group, there were 0.16 million persons in a youth group (15-24 years old) or 3.3 % of the unemployment rate and 0.16 million persons in adult group (25 years and over) or 0.5% of the unemployment rate. Comparing to the same period of 2010 the unemployed persons decreased by 35 thousand persons (from 0.19 million persons to 0.16 million persons) for a youth group (15-24 years old). The adult group (25 years and over) decreased by 79 thousand persons (from 0.24 million persons to 0.16 million persons).

FIGURE 5 UNEMPLOYMENT RATE OF 2008 TO 2011 BY AGE GROUP

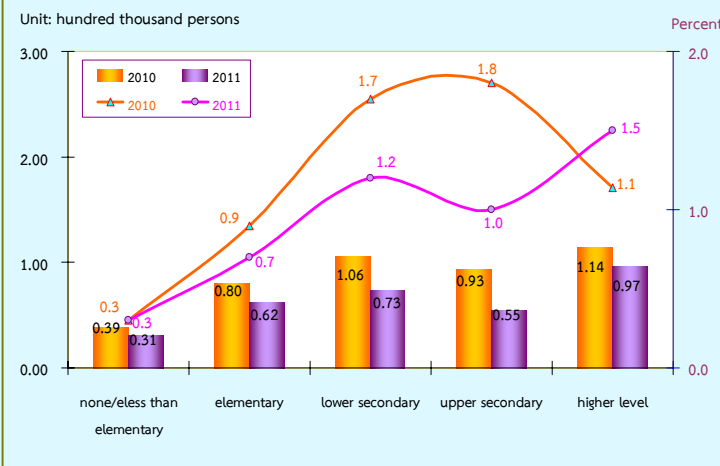


FIGURE 6 NUMBER OF UNEMPLOYED PERSONS BY EXPERIENCE OF WORK QUARTER 1 : 2011



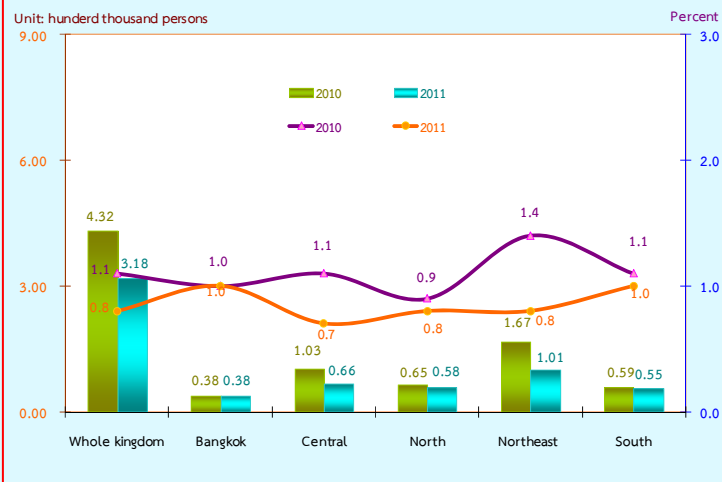
Concerning unemployed persons by experience of work, in the first quarter of 2011, about 0.32 million persons, had never worked with this number 76 thousand persons were from the youth group (15-24 years old), and 34 thousand persons from the adult group (25 years and over). About 0.21 million persons had ever worked. There were unemployed persons from the service sector was 90 thousand persons, from the manufacturing 65 thousand persons, and the least was from the agriculture sector of about 53 thousand persons.

FIGURE 7 COMPARISON NUMBER AND UNEMPLOYMENT RATES BY LEVEL OF EDUCATION, BETWEEN QUARTER 1 OF 2010 AND 2011



For level of educational attainment of the unemployed persons, it showed that the number of unemployed persons with higher level was highest 97 thousand persons, followed by the lower secondary level 73 thousand persons, elementary level 62 thousand persons upper secondary level 55 thousand persons and unemployed persons with no education and less than elementary were 31 thousand persons.

FIGURE 8 COMPARISON OF THE NUMBER AND UNEMPLOYMENT RATES BY REGION, BETWEEN QUARTER 1 OF 2010 AND 2011



Comparing the number of unemployment by region with the same period of the last year, showed that almost all regions were unemployed decreased. The Northeast decreased by 66 thousand persons, followed by the Central decreased by 37 thousand persons, the North decreased by 7 thousand persons and the South decreased by 4 thousand persons. While in the Bangkok the number of unemployed not changed.

Concerning unemployment rate, it showed that the overall unemployment rates decreased by 0.3 (from 1.1% to 0.8%). The Northeast decreased by 0.6 (from 1.4% to 0.8%) the central decreased by 0.4 (from 1.1% to 0.7%), while the North and the South with the same rate increased by 0.1, for the Bangkok the unemployment rate unchanged.