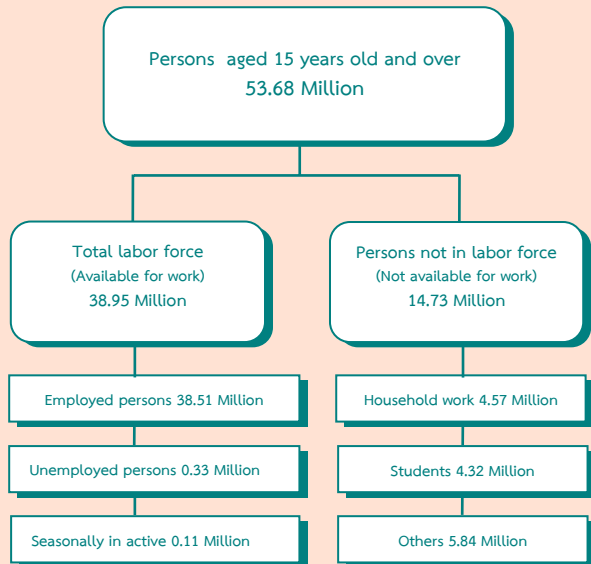


EXECUTIVE SUMMARY

LABOR FORCE SURVEY IN THE 4th QUARTER OF 2010

CHART OF THE NUMBER OF POPULATION BY LABOR FORCE
THE LABOR FORCE SURVEY , QUARTER 4 : 2010



Some major findings of Labor Force Survey in the fourth quarter of 2010, conducted by NSO showed that for people aged 15 years and over of 53.68 million persons, 38.95 million persons were in the labor force (38.51 million persons were employed, 0.33 million persons were unemployed and 0.11 million persons were seasonally inactive labor force) and 14.73 million were not in the labor force.

Comparing to the same period of 2009, the number of persons employed increased 0.26 million persons. (from 38.25 million to 38.51 million) or about 0.7%. It was found that the number of employed persons in agriculture sector increased 0.44 million persons (from 15.45 million to 15.89 million). Those in non – agriculture sector decreased about 0.18 million persons. (from 22.80 million to 22.62). This decrement was found in various industries, Hotel and restaurants about 0.12 million persons. Construction about 90 thousand persons, The field of Manufacturing and Transport decreased with the same about 60 thousand persons.

FIGURE 1 COMPARISON OF THE NUMBER OF EMPLOYED PERSONS BETWEEN QUARTER 4 OF 2009 AND 2010 BY INDUSTRY

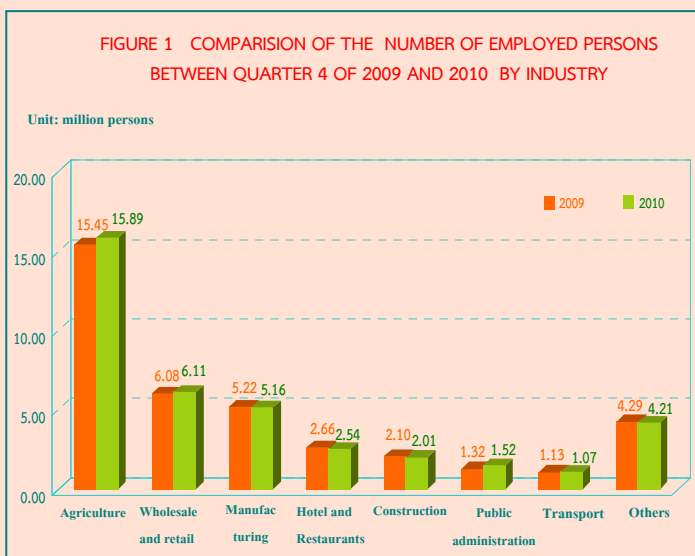
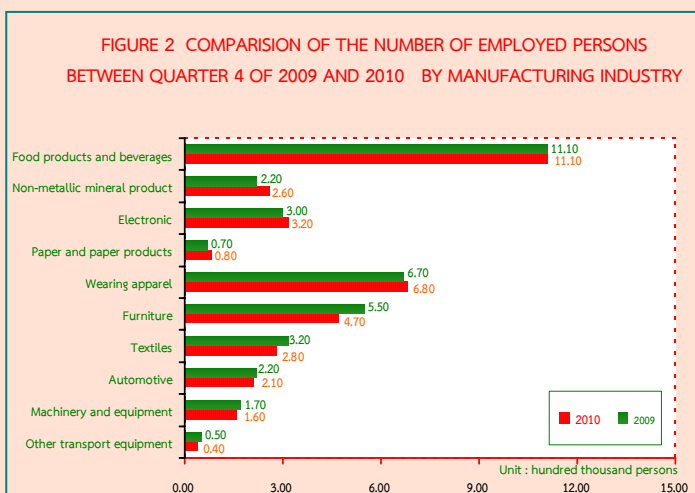
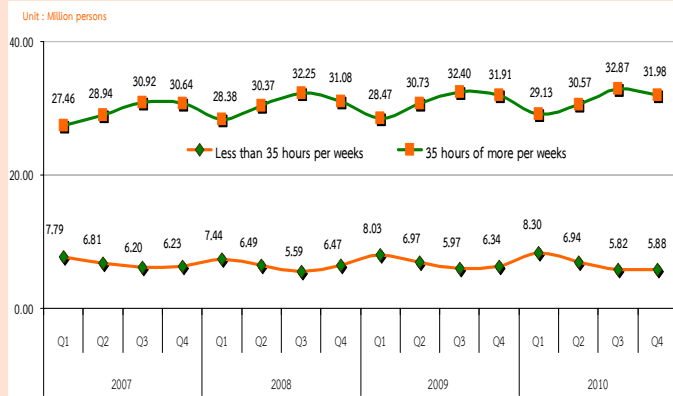


FIGURE 2 COMPARISON OF THE NUMBER OF EMPLOYED PERSONS BETWEEN QUARTER 4 OF 2009 AND 2010 BY MANUFACTURING INDUSTRY



Industrial production in the fourth quarter of 2010 compared with the same period of 2009, the number of workers have been increased and decreased in activity that were increased of Non-metallic mineral products (40 thousand persons), Electronic (20 thousand persons), Paper and paper products and Wearing apparel were equally (10 thousand persons). There were some industries with the decreased number of employed persons, such as Furniture production (80 thousand persons), Textiles (40 thousand persons), Automotive and Machinery and equipment and Other transport equipment decrease in the same (10 thousand persons), and no change for the Food products and beverages.

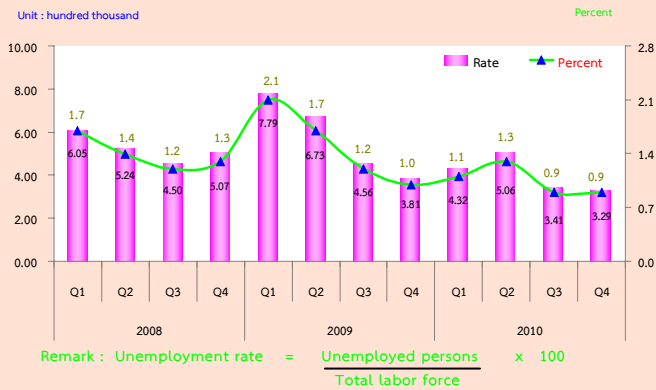
FIGURE 3 THE NUMBER OF EMPLOYED PERSONS OF 2007 TO 2010 BY HOURS WORKED



Regarding working hours per day of employed persons in the fourth quarter of 2010 showed that about 31.98 million persons or 83.1% of the total employed persons worked more than 35 hours per weeks. On the other word, about 5.88 million persons or 15.2% of total employed persons worked less than 35 hours per weeks.

Comparing to the same period of last year, the results revealed that the employed persons working more than 35 hours per weeks which considered as a full time worker of increased, about 70 thousand persons and those working less than 35 hours per weeks or part time worker decreased, of about 0.46 million persons.

FIGURE 4 THE NUMBER OF UNEMPLOYED PERSONS AND UNEMPLOYMENT RATE OF 2008 TO 2010



From the 4th quarter of 2010, there were 0.33 million persons or 0.9% of the unemployment rate. Comparing to the same period of last year, the number of unemployed persons decreased by 52 thousand persons (from 0.38 million persons to 0.33 million persons). Considering by age group, there were 0.16 million persons in a youth group (15-24 years old) or 3.2 % of the unemployment rate and 0.18 million persons in adult group (25 years and over) or 0.5% of the unemployment rate. Comparing to the same period of 2009 the unemployed persons decreased 44 thousand persons for a youth group (15-24 years old) (from 0.20 million persons to 0.16 million persons). The adult group (25 years and over) decreased 7 thousand persons (from 0.182 million persons to 0.175 million persons).

FIGURE 5 UNEMPLOYMENT RATE OF 2007 TO 2010 BY AGE GROUP

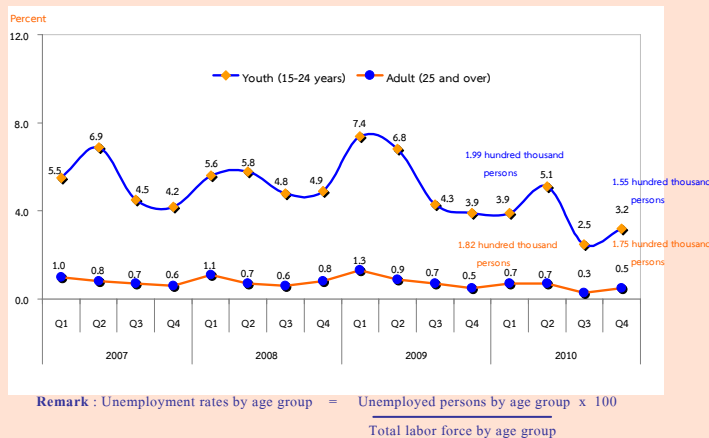
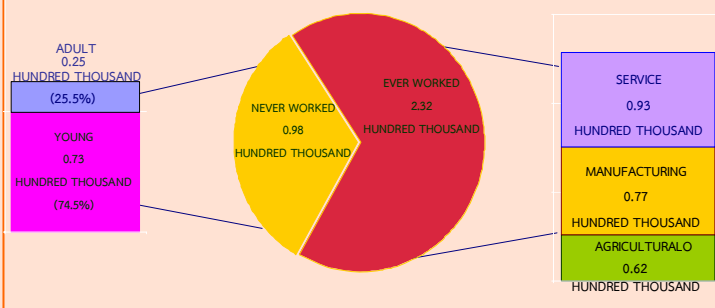
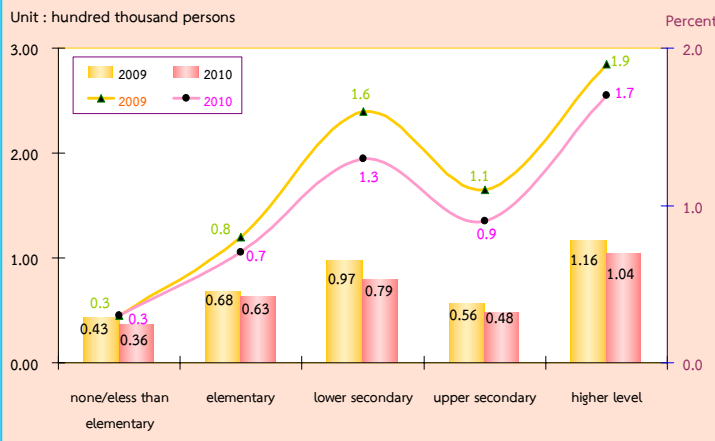


FIGURE 6 NUMBER OF UNEMPLOYED PERSONS BY EXPERIENCE OF WORK QUARTER 4 : 2010



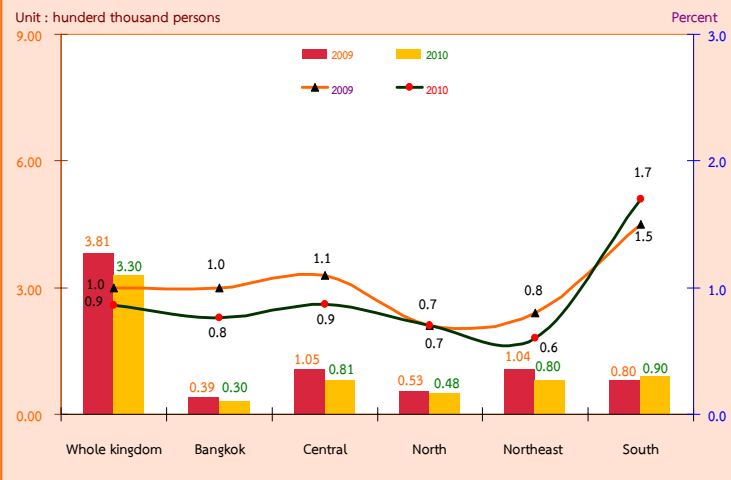
Concerning unemployed persons by experience of work, in the fourth quarter of 2010, about 0.33 million persons, had never worked about 98 thousand persons, had never worked with this number 73 thousand persons were from the youth group (15-24 years old), and 25 thousand persons from the adult group (25 years and over). About 0.23 million persons had ever worked. There were unemployed persons from the service sector was 93 thousand persons, from the manufacturing 77 thousand persons, and the least was from the agriculture sector of about 62 thousand persons.

FIGURE 7 COMPARISON NUMBER AND UNEMPLOYMENT RATES BY LEVEL OF EDUCATION, BETWEEN QUARTER 4 : OF 2009 AND 2010



For level of educational attainment of the unemployed persons, it showed that the number of unemployed persons with Higher level was highest 0.10 million persons, followed by the Lower secondary level 79 thousand persons, Elementary level 63 thousand persons, Upper secondary level 48 thousand persons. And Unemployed persons with No education and Less than elementary were 36 thousand persons.

FIGURE 8 COMPARISON OF THE NUMBER OF UNEMPLOYMENT BETWEEN QUARTER 4 OF 2009 AND 2010 BY REGION



Comparing the number of unemployment by region with the same period of the last year, showed that almost all sectors were unemployed decreased. The Central and Northeast decreased with the same of 24 thousand persons, followed by the Bangkok decreased 9 thousand persons, and the North decreased 5 thousand persons. While in the South the number of unemployed increased 10 thousand persons.

Concerning unemployment rate, it showed that the overall unemployment rates a decreased by 0.1 (From 1.0% to 0.9%). The Bangkok, the Central and the Northeast with the same rate decreased 0.2, while the South with the unemployment rate increased by 0.2 (From 1.5% to 1.7%), for the North the unemployment rate unchanged.