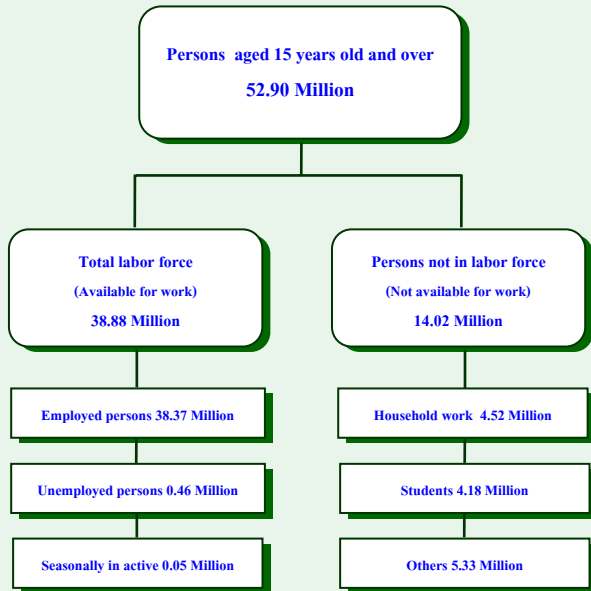


EXECUTIVE SUMMARY

CHART OF THE NUMBER OF POPULATION BY LABOR FORCE

THE LABOR FORCE SURVEY , QUARTER 3 : 2009



Some major findings of Labor Force Survey in the third quarter of 2009, conducted by NSO showed that for people aged 15 years and over of 52.90 million persons, 38.88 million were in the labor force (38.37 million were employed, 0.46 million were unemployed and 0.05 million were seasonally inactive labor force) and 14.02 million were not in the labor force.

Comparing to the same period of 2008, the number of persons employed increased 0.53 million persons. (from 37.84 million to 38.37 million) or about 1.4 %. Considering by industry, it was found that the number of employed persons in non-agriculture sector increased about 0.67 million (from 21.77 million to 22.44 million). This increment was found in various industries, i.e. wholesale and retail trade about (0.24 million), hotel and restaurants about (0.21 million), manufacturing sector and public administration with the same about (0.07 million), construction (0.03 million), transport 0.02 million. This decrement was found in various industries, i.e. community services (0.03 million), Financial intermediation about (0.02 million), Extraterritorial organizations (0.02 million), Health and social work about (5.6 thousand) the rest were in the other sectors. Those in agriculture sector decreased about 0.14 million persons (from 16.07 million to 15.93 million).

Moreover, there was an increase of employed persons in manufacturing sector. From the same period last year, the numbers were in many industries, i.e. Manufacture of wood and of products of wood 77 thousand persons, Food products and beverages 41 thousand persons, Manufacture of fabricated metal products 37 thousand persons, Manufacture of furniture 34 thousand persons, Manufacture of machinery and equipment 21 thousand persons, Manufacture of rubber and plastics products 20 thousand persons. There were some industries with the decreased number of employed persons, such as Manufacture of wearing apparel 0.1 million persons, Tanning and dressing of leather 42 thousand persons, Manufacture of Electronic 31 thousand persons and Manufacture of paper and paper products 15 thousand persons.

FIGURE 1 COMPARISON OF THE NUMBER OF EMPLOYED PERSONS BETWEEN QUARTER 3 OF 2008 AND 2009 BY INDUSTRY

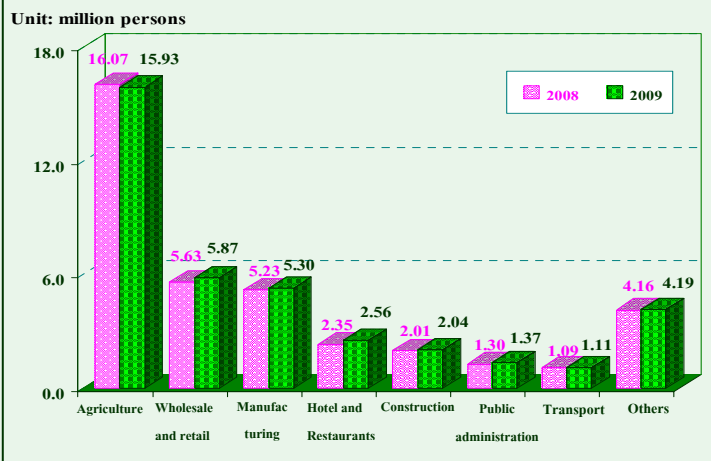


FIGURE 2 COMPARISON OF THE NUMBER OF EMPLOYED PERSONS BETWEEN QUARTER 3 OF 2008 AND 2009 BY MANUFACTURING INDUSTRY

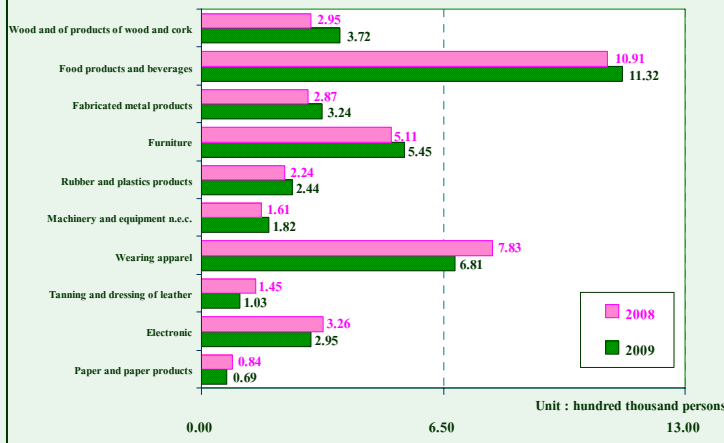
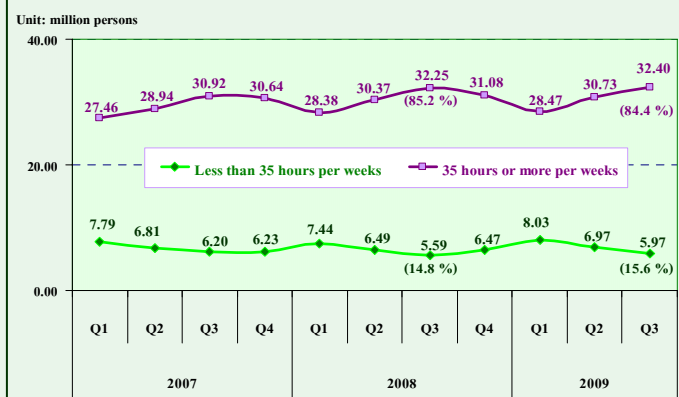


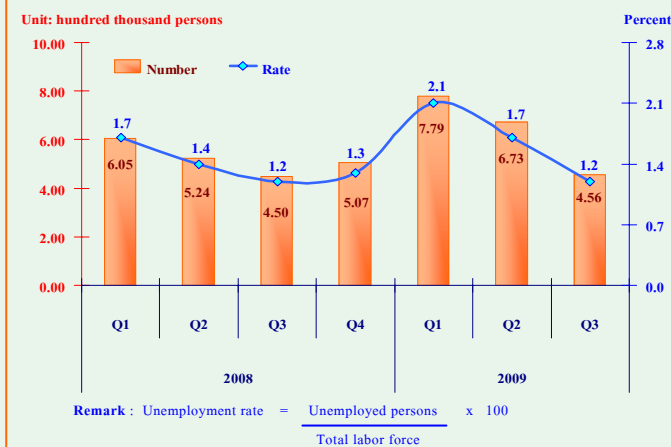
FIGURE 3 COMPARISON OF THE NUMBER OF EMPLOYED PERSONS BETWEEN QUARTER 3 OF 2008 AND 2009 BY HOURS-WORKED



Regarding working hours per day of employed persons in the third quarter of 2009 showed that about 32.40 million persons or 84.4% of the total employed persons worked more than 35 hours per weeks. On the other word, about 5.97 million persons or 15.6% of total employed persons worked less than 35 hours per weeks.

Comparing to the same period of last year, the results revealed that the employed persons working more than 35 hours per weeks which considered as a full time worker decreased, of about 0.8% and those working less than 35 hours per weeks or part time worker increased, of about 0.8%

FIGURE 4 NUMBER AND UNEMPLOYMENT RATE BETWEEN QUARTER 3 OF 2008 AND 2009



From the 3rd quarter of 2009, there were 0.46 million unemployed persons or 1.2% of the unemployment rate. Comparing to the same period of last year, the number of unemployment increased by 6 thousand (from 4.50 hundred thousand to 4.56 hundred thousand). Considering by age group, there were 0.22 million persons in a youth group (15 – 24 years old) or 4.3% of the unemployment rate and 0.24 million persons in adult group (25 years and over) or 0.7% of the unemployment rate.

FIGURE 5 COMPARISON OF UNEMPLOYMENT RATE BETWEEN QUARTER 3 OF 2008 AND 2009 BY AGE GROUP



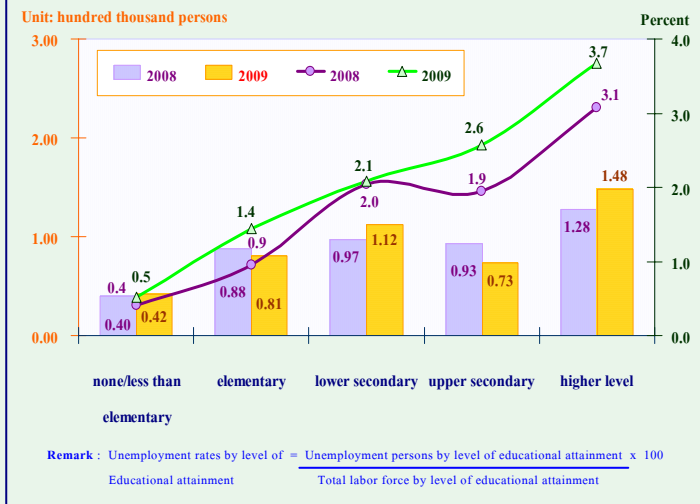
Comparing to the same period of last year, the results revealed that the unemployed persons in a youth group (15 – 24 years old) decreased, of about 0.5% and those in adult group (25 years and over) increased, of about 0.1%

FIGURE 6 NUMBER OF UNEMPLOYED PERSONS BY EXPERIENCE OF WORK QUARTER 3 : 2009



Concerning unemployed persons by experience in work, about 1.55 hundred thousand had never worked. With this number, 1.18 hundred thousand persons were from the youth group and 37 thousand persons from the adult group. About 3.01 hundred thousand persons of unemployed persons had ever worked. They were unemployed from manufacturing 1.41 hundred thousand persons, from service sector 1.25 hundred thousand persons and the least from the agriculture sector, of about 35 thousand persons.

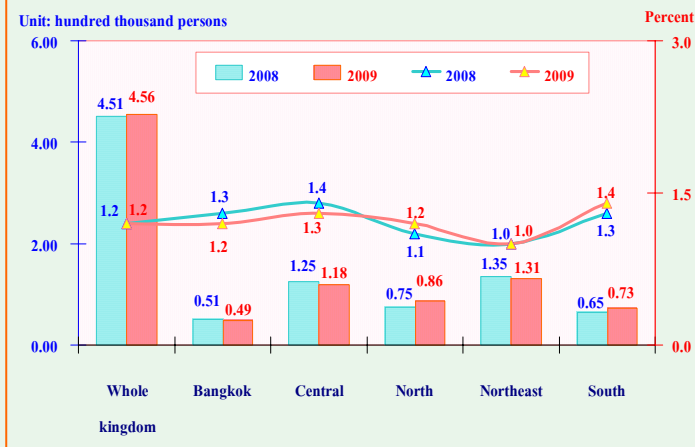
FIGURE 7 COMPARISON OF THE NUMBER AND UNEMPLOYMENT RATES BETWEEN QUARTER 3 OF 2008 AND 2009 BY LEVEL OF EDUCATION



For level of educational attainment of the unemployed persons, it showed that the highest number of unemployed persons was with higher level (1.48 hundred thousand persons), followed by the lower secondary level (1.12 hundred thousand persons), elementary level (81 thousand persons) and upper secondary level (73 thousand persons). Unemployed persons with less than elementary and no education were about 42 thousand persons.

Comparing by region, it was found that the highest number of unemployment was in the North which increased by 11 thousand persons, followed by the South (8 thousand persons), the Central which decreased by 7 thousand persons, the Northeast (4 thousand persons) and Bangkok (2 thousand persons).

FIGURE 8 COMPARISON OF THE NUMBER OF UNEMPLOYMENT BETWEEN QUARTER 3 OF 2008 AND 2009 BY REGION



Comparing with the same period of last year, it showed that the unemployment rates be equal to 1.2%, the North and the South with the same rate (increased 0.1%), Bangkok and the Central (decreased 0.1%) and the Northeast be the same (1.0%).