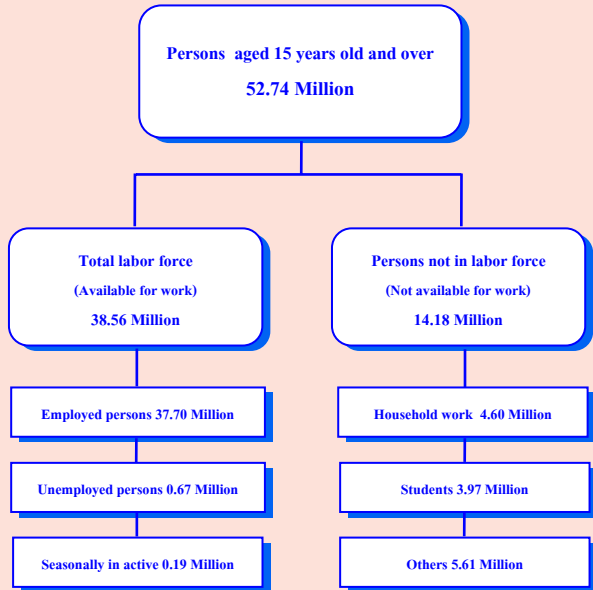


EXECUTIVE SUMMARY

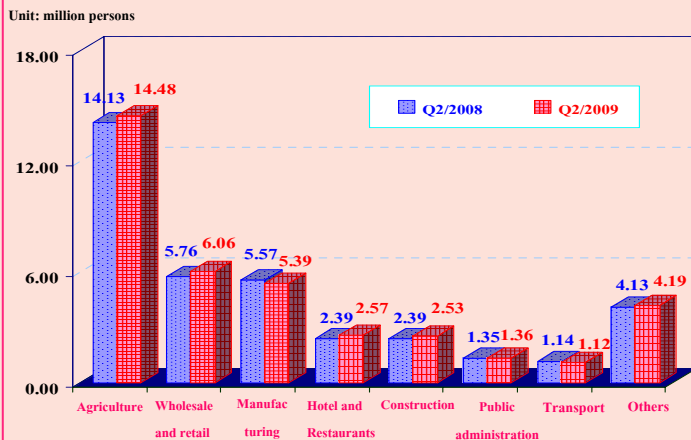
CHART OF THE NUMBER OF POPULATION BY LABOR FORCE
THE LABOR FORCE SURVEY , QUARTER 2 : 2009



Some major findings of the second quarter of Labor Force Survey in 2009, conducted by NSO showed that there were 52.74 million persons, aged 15 years and over, with this number, 38.56 million were in the total labor force (37.70 million were employed, 0.67 million were unemployed and 0.19 million were seasonally inactive labor force) and 14.18 million were not in the labor force.

Comparing to the same period of 2008, the persons employed increased 0.84 million persons or about 2.3%. (from 36.86 million to 37.70 million). Considering by industry, it was found that the number of employed persons in agriculture sector increased about 0.35 million (from 14.13 million to 14.48 million). Those in non-agriculture sector increased about 0.49 million persons (from 22.73 million to 23.22 million). This increment was found in various industries, i.e. wholesale and retail trade about (0.30 million), hotel and restaurants about (0.18 million) Construction about (0.14 million) Public administration about (0.09 million) etc. However, in manufacturing sector, there was a decrease of about 0.18 million persons Transport about 0.02 million and the rest were in the other sectors.

FIGURE 1 COMPARISON OF THE NUMBER OF EMPLOYED PERSONS BETWEEN QUARTER 2 OF 2008 AND 2009 BY INDUSTRY



As there was a decrease in manufacturing sector of about 0.18 million persons, the numbers were in many industries, i.e. Furniture 7.7 ten thousand persons, Electronic 7.1 ten thousand persons, Costume 4.8 ten thousand persons, Automotive 4 ten thousand persons, Printing and reproduction of recorded media 2.6 ten thousand persons, Wood and of products of wood 2 ten thousand persons. There were some industries with the increased number of employed persons, such as Textiles 6.4 ten thousand persons, Food products and beverages 4.7 ten thousand persons, Chemical product and preparation 2.1 ten thousand persons and Fabricated metal products 1.6 ten thousand persons.

FIGURE 2 COMPARISON OF THE NUMBER OF EMPLOYED PERSONS BETWEEN QUARTER 2 OF 2008 AND 2009 BY MANUFACTURING INDUSTRY

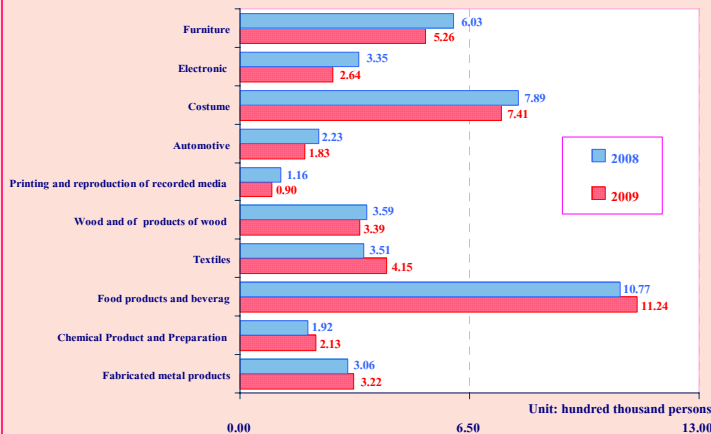
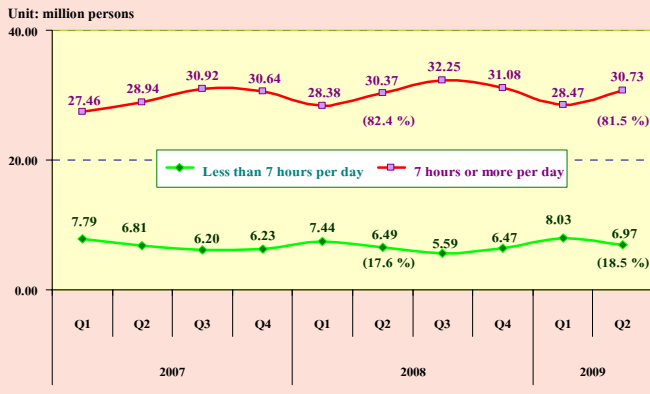


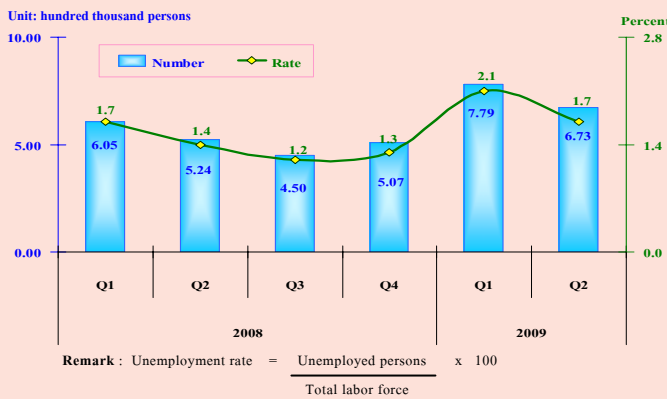
FIGURE 3 COMPARISON OF THE NUMBER OF EMPLOYED PERSONS BETWEEN QUARTER 2 OF 2008 AND 2009 BY HOURS-WORKED



Regarding employed persons by hours worked per day, the results of quarter 2 showed that about 30.73 million persons or 81.5% of the employed persons worked more than 7 hours a day. On the other word, about 6.97 million persons or 18.5% of employed persons worked less than 7 hours a day.

Comparing to the same period of last year, the results revealed that the employed persons working more than 7 hours a day decreased, of about 0.9% and those working less than 7 hours a day increased, of about 0.9%

FIGURE 4 NUMBER AND UNEMPLOYMENT RATE BETWEEN QUARTER 2 OF 2008 AND 2009



From the 2nd quarter of 2009, there were 0.67 million unemployed persons or 1.7% of the unemployment rate. Comparing to the same period of last year, the number of unemployment increased by 0.15 million (from 0.52 million to 0.67 million). Considering by age group, there were 0.36 million persons in a youth group (15 – 24 years old) or 6.8% of the unemployment rate and 0.31 million persons in adult group (25 years and over) or 0.9% of the unemployment rate. The bigger figures of unemployment rate in the youth group was due to the less experience in seeking a job.

FIGURE 5 COMPARISON OF UNEMPLOYMENT RATE BETWEEN QUARTER 2 OF 2008 AND 2009 BY AGE GROUP



Concerning unemployed persons by experience in work, about 0.22 million had never worked. With this number, 0.18 million were from the youth group and 0.04 million from the adult group. About 0.45 million of unemployed persons had ever worked. They were unemployed from manufacturing 0.22 million, from service sector 0.17 million and the least from the agriculture sector, of about 0.06 million.

FIGURE 6 NUMBER OF UNEMPLOYED PERSONS BY EXPERIENCE OF WORK QUARTER 2 : 2009

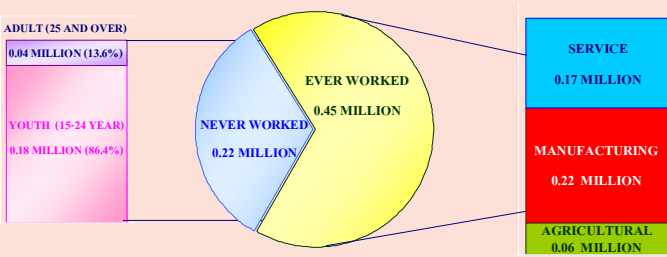
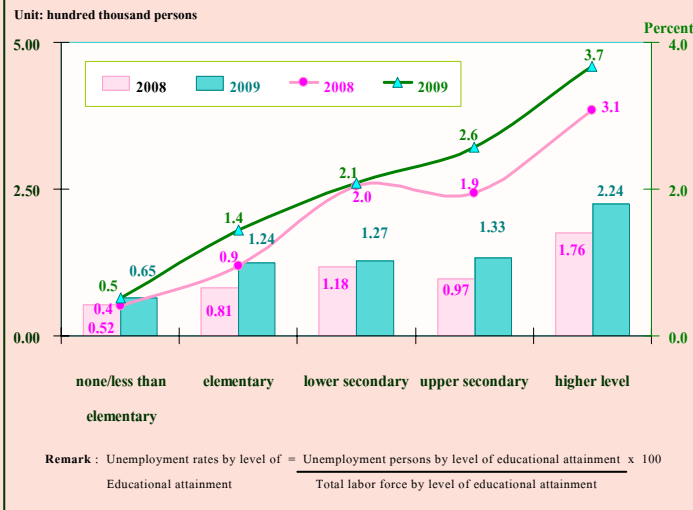


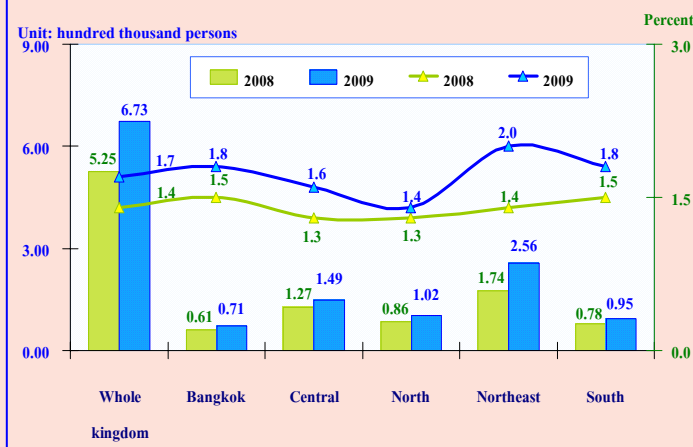
FIGURE 7 NUMBER AND UNEMPLOYMENT RATES BY LEVEL OF EDUCATION, QUARTER 2 : 2009



For level of educational attainment of the unemployed persons, it showed that the highest number of unemployed persons was with higher level, (0.22 million), followed by the upper secondary level, lower secondary level and elementary level, which were very close number of about 0.13 million. Unemployed persons with less than elementary and no education were about 65,000 persons.

Comparing by region, it was found that the highest number of unemployment was in the Northeast which increased by 82,000 persons (from 0.17 million to 0.26 million) followed by the Central (22,000 persons), the South (17,000 persons), the North (16,000 persons) and Bangkok (10,000 persons).

FIGURE 8 COMPARISON OF THE NUMBER OF UNEMPLOYMENT BETWEEN QUARTER 2 OF 2008 AND 2009 BY REGION



Similarly, the unemployment rates was highest, about 2.0%, in the Northeast, followed by Bangkok and the South with the same rate (1.8%), the Central (1.6%) and the North (1.4%)

Comparing with the same period of last year, it showed that the unemployment rates increased 0.3%, the Northeast had the highest unemployment rate (0.6%), Bangkok, the Central and the South with the same rate (0.3%). and the North (0.1%).