

## CHAPTER 2

### MAJOR FINDINGS

This chapter presents a summary of the results of the labor force survey conducted in the whole kingdom during the 1<sup>st</sup>-12<sup>th</sup> of October – December 2008, which is the fourth quarter of the year. The results obtained from this survey showed conditional of the number of employed, unemployed and interesting characteristics of labor force in October – December 2008.

The number of population which had been used in the estimation procedure from the survey round 1 in February, 1995 were changed in order to correspond with those used in the 8th National Economic and Social Development Plan such number were obtained from the new series of Population Projection for Thailand, 1990-2020 which was revised by Quality of life and social development office, National Economic and Social Development Board in May 2003.

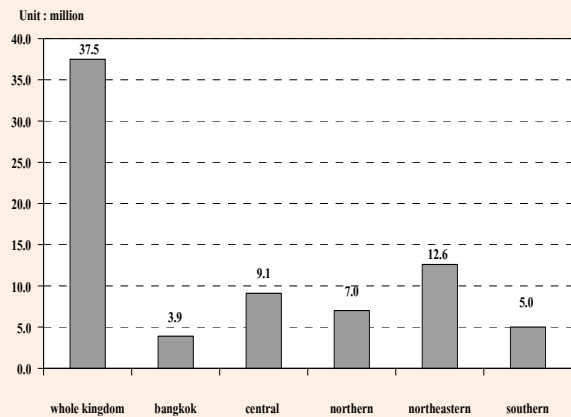
#### 1. Structure of the labor force

The total population was estimated at 66.6 million, of which 52.4 million were population aged 15 years and over and 38.2 million were in the labor force. Of the total labor force, about 69.7 per cent were residing in the non-municipal areas and about 54.3 per cent were males.

The “current labor force”, that is the currently active part of the total labor force, which was either employed or was available for employment in October - December 2008, was of

the order of 38.1 million. Since the survey period was among the agricultural season, the number of the seasonally inactive labor force was about 94,400 persons. This number will be increased when the survey in non-agriculture season.

FIGURE 1 NUMBER OF EMPLOYED PERSONS BY REGION



The current labor force was largely employed, however 1.3 per cent of which or about 0.51 million were unemployed. Of these, 0.2 per cent were looking for works and the rest 1.1 per cent were not looking for works but available for works.

Persons not in the labor force could be divided into two major groups i.e. persons aged 15 years and over and those under 15 years of age. The first group comprised 21.4 per cent of the total population or 27.2 per cent of total population aged 15 years and over. About 4.6 million were housewives 4.2 million were students and 4.4 million were young/old or incapable of work. The latter group comprised 14.2 million or 21.3 per cent of the total population.

**TABLE A NUMBER AND PERCENTAGE OF POPULATION BY LABOR FORCE STATUS, AREA AND SEX**

| LABOR FORCE STATUS                             | Whole kingdom   |                 |                 | Municipal areas |                |                 | Non - municipal areas |                 |                 |
|--|-----------------|-----------------|-----------------|-----------------|----------------|-----------------|-----------------------|-----------------|-----------------|
|  | Total           | Male            | Female          | Total           | Male           | Female          | Total                 | Male            | Female          |
| Number ('000)                                  |                 |                 |                 |                 |                |                 |                       |                 |                 |
| <b>Total</b>                                   | <b>66,610.6</b> | <b>32,733.4</b> | <b>33,877.2</b> | <b>20,504.9</b> | <b>9,815.5</b> | <b>10,689.4</b> | <b>46,105.7</b>       | <b>22,917.9</b> | <b>23,187.8</b> |
| <b>Total labor force</b>                       | <b>38,151.3</b> | <b>20,717.3</b> | <b>17,434.0</b> | <b>11,541.2</b> | <b>6,050.4</b> | <b>5,490.9</b>  | <b>26,610.1</b>       | <b>14,666.9</b> | <b>11,943.2</b> |
| <b>1.Current labor force</b>                   | <b>38,056.9</b> | <b>20,671.3</b> | <b>17,385.5</b> | <b>11,534.3</b> | <b>6,046.7</b> | <b>5,487.6</b>  | <b>26,522.6</b>       | <b>14,624.7</b> | <b>11,897.9</b> |
| 1.1 Employed                                   | 37,550.0        | 20,377.8        | 17,172.2        | 11,362.7        | 5,949.1        | 5,413.6         | 26,187.3              | 14,428.7        | 11,758.6        |
| 1) At work                                     | 37,000.6        | 20,044.2        | 16,956.3        | 11,288.4        | 5,903.7        | 5,384.7         | 25,712.2              | 14,140.6        | 11,571.6        |
| 2) With job but not at work                    | 549.4           | 333.6           | 215.9           | 74.3            | 45.4           | 28.9            | 475.2                 | 288.2           | 187.0           |
| 1.2 Unemployed                                 | 506.9           | 293.5           | 213.4           | 171.6           | 97.6           | 74.1            | 335.2                 | 195.9           | 139.3           |
| 1) Looking for a job                           | 81.6            | 39.1            | 42.5            | 44.0            | 21.4           | 22.6            | 37.6                  | 17.7            | 19.9            |
| 2) Not looking /Available for work             | 425.2           | 254.4           | 170.8           | 127.6           | 76.2           | 51.5            | 297.6                 | 178.2           | 119.4           |
| <b>2.Seasonally inactive labor force</b>       | <b>94.5</b>     | <b>46.0</b>     | <b>48.5</b>     | <b>7.0</b>      | <b>3.7</b>     | <b>3.2</b>      | <b>87.5</b>           | <b>42.2</b>     | <b>45.3</b>     |
| <b>Not in labor force &gt; 15 years of age</b> | <b>14,247.9</b> | <b>4,751.3</b>  | <b>9,496.6</b>  | <b>4,751.3</b>  | <b>1,642.9</b> | <b>3,108.4</b>  | <b>9,496.6</b>        | <b>3,108.4</b>  | <b>6,388.2</b>  |
| 1. Household work                              | 4,634.8         | 197.8           | 4,436.9         | 1,522.9         | 77.9           | 1,445.0         | 3,111.9               | 119.9           | 2,991.9         |
| 2. Studies                                     | 4,203.4         | 2,019.6         | 2,183.8         | 1,442.6         | 699.1          | 743.5           | 2,760.9               | 1,320.5         | 1,440.4         |
| 3. Too young/old or incapable to work          | 4,362.8         | 1,876.7         | 2,486.1         | 1,285.6         | 552.4          | 733.2           | 3,077.3               | 1,324.3         | 1,753.0         |
| 4. Others                                      | 1,046.9         | 657.2           | 389.7           | 500.3           | 313.5          | 186.8           | 546.6                 | 343.7           | 203.0           |
| <b>Persons under 15 years of age</b>           | <b>14,211.3</b> | <b>7,264.8</b>  | <b>6,946.6</b>  | <b>4,212.3</b>  | <b>2,122.2</b> | <b>2,090.1</b>  | <b>9,999.0</b>        | <b>5,142.6</b>  | <b>4,856.5</b>  |
| Percentage                                     |                 |                 |                 |                 |                |                 |                       |                 |                 |
| <b>Total</b>                                   | <b>100.0</b>    | <b>100.0</b>    | <b>100.0</b>    | <b>100.0</b>    | <b>100.0</b>   | <b>100.0</b>    | <b>100.0</b>          | <b>100.0</b>    | <b>100.0</b>    |
| <b>Total labor force</b>                       | <b>57.3</b>     | <b>63.3</b>     | <b>51.5</b>     | <b>56.3</b>     | <b>61.6</b>    | <b>51.4</b>     | <b>57.7</b>           | <b>64.0</b>     | <b>51.5</b>     |
| <b>1.Current labor force</b>                   | <b>57.1</b>     | <b>63.2</b>     | <b>51.3</b>     | <b>56.3</b>     | <b>61.6</b>    | <b>51.3</b>     | <b>57.5</b>           | <b>63.8</b>     | <b>51.3</b>     |
| 1.1 Employed                                   | 56.4            | 62.3            | 50.7            | 55.4            | 60.6           | 50.6            | 56.8                  | 63.0            | 50.7            |
| 1) At work                                     | 55.6            | 61.2            | 50.1            | 55.1            | 60.2           | 50.4            | 55.8                  | 61.7            | 49.9            |
| 2) With job but not at work                    | 0.8             | 1.0             | 0.6             | 0.4             | 0.5            | 0.3             | 1.0                   | 1.3             | 0.8             |
| 1.2 Unemployed                                 | 0.7             | 0.9             | 0.6             | 0.8             | 1.0            | 0.7             | 0.7                   | 0.9             | 0.6             |
| 1) Looking for a job                           | 0.1             | 0.1             | 0.1             | 0.2             | 0.2            | 0.2             | 0.1                   | 0.1             | 0.1             |
| 2) Not looking /Available for work             | 0.6             | 0.8             | 0.5             | 0.6             | 0.8            | 0.5             | 0.7                   | 0.8             | 0.5             |
| <b>2.Seasonally inactive labor force</b>       | <b>0.1</b>      | <b>0.1</b>      | <b>0.1</b>      | <b>0.0</b>      | <b>0.0</b>     | <b>0.0</b>      | <b>0.2</b>            | <b>0.2</b>      | <b>0.2</b>      |
| <b>Not in labor force &gt; 15 years of age</b> | <b>21.4</b>     | <b>14.5</b>     | <b>28.0</b>     | <b>23.2</b>     | <b>16.7</b>    | <b>29.1</b>     | <b>20.6</b>           | <b>13.6</b>     | <b>27.6</b>     |
| 1. Household work                              | 7.0             | 0.6             | 13.1            | 7.4             | 0.8            | 13.5            | 6.8                   | 0.5             | 12.9            |
| 2. Studies                                     | 6.3             | 6.2             | 6.5             | 7.0             | 7.1            | 7.0             | 6.0                   | 5.8             | 6.2             |
| 3. Too young/old or incapable to work          | 6.6             | 5.7             | 7.3             | 6.3             | 5.6            | 6.9             | 6.7                   | 5.8             | 7.6             |
| 4. Others                                      | 1.6             | 2.0             | 1.2             | 2.4             | 3.2            | 1.8             | 1.2                   | 1.5             | 0.9             |
| <b>Persons under 15 years of age</b>           | <b>21.3</b>     | <b>22.2</b>     | <b>20.5</b>     | <b>20.5</b>     | <b>21.6</b>    | <b>19.6</b>     | <b>21.7</b>           | <b>22.4</b>     | <b>20.9</b>     |

**TABLE B NUMBER AND PERCENTAGE OF POPULATION BY LABOR FORCE STATUS, SEX, REGION AND AREA**

| Labor Force Status<br>and Sex         | Whole Kingdom   |                 |                 | Bangkok        | Central Region  |                |                 | Northern Region |                |                | Northeastern Region |                |                 | Southern Region |                |                |
|---------------------------------------|-----------------|-----------------|-----------------|----------------|-----------------|----------------|-----------------|-----------------|----------------|----------------|---------------------|----------------|-----------------|-----------------|----------------|----------------|
|                                       | Total           | M.A.            | Non-M.A.        | Total          | M.A.            | Non-M.A.       | Total           | M.A.            | Non-M.A.       | Total          | M.A.                | Non-M.A.       | Total           | M.A.            | Non-M.A.       |                |
| <b>Number ('000)</b>                  |                 |                 |                 |                |                 |                |                 |                 |                |                |                     |                |                 |                 |                |                |
| <b>Total</b>                          | <b>66,610.6</b> | <b>20,504.9</b> | <b>46,105.7</b> | <b>6,855.5</b> | <b>15,784.6</b> | <b>5,229.1</b> | <b>10,555.5</b> | <b>12,099.8</b> | <b>2,474.1</b> | <b>9,625.7</b> | <b>22,688.9</b>     | <b>3,666.0</b> | <b>19,022.8</b> | <b>9,181.8</b>  | <b>2,280.1</b> | <b>6,901.7</b> |
| In the labor force                    | 38,151.3        | 11,541.2        | 26,610.1        | 3,950.3        | 9,220.1         | 3,018.9        | 6,201.2         | 7,102.4         | 1,388.2        | 5,714.2        | 12,816.1            | 1,970.9        | 10,845.1        | 5,062.5         | 1,212.9        | 3,849.6        |
| Not in the labor force over 15 years  | 14,247.9        | 4,751.3         | 9,496.6         | 1,625.5        | 3,385.7         | 1,142.9        | 2,242.8         | 2,669.3         | 614.0          | 2,055.2        | 4,700.2             | 861.5          | 3,838.8         | 1,867.3         | 507.5          | 1,359.8        |
| Not in the labor force under 15 years | 14,211.3        | 4,212.3         | 9,999.0         | 1,279.8        | 3,178.7         | 1,067.3        | 2,111.5         | 2,328.2         | 471.8          | 1,856.3        | 5,172.6             | 833.7          | 4,339.0         | 2,252.0         | 559.7          | 1,692.3        |
| <b>Male</b>                           | <b>32,733.4</b> | <b>9,815.5</b>  | <b>22,917.9</b> | <b>3,198.8</b> | <b>7,698.8</b>  | <b>2,525.2</b> | <b>5,173.6</b>  | <b>5,977.4</b>  | <b>1,188.3</b> | <b>4,789.1</b> | <b>11,305.6</b>     | <b>1,795.7</b> | <b>9,509.9</b>  | <b>4,552.7</b>  | <b>1,107.5</b> | <b>3,445.3</b> |
| In the labor force                    | 20,717.3        | 6,050.4         | 14,666.9        | 2,026.1        | 4,932.3         | 1,583.7        | 3,348.7         | 3,841.8         | 728.4          | 3,113.4        | 7,108.8             | 1,058.0        | 6,050.8         | 2,808.3         | 654.2          | 2,154.1        |
| Not in the labor force over 15 years  | 4,751.3         | 1,642.9         | 3,108.4         | 526.5          | 1,147.0         | 402.5          | 744.5           | 944.4           | 224.9          | 719.5          | 1,541.2             | 316.9          | 1,224.3         | 592.3           | 172.1          | 420.2          |
| Not in the labor force under 15 years | 7,264.8         | 2,122.2         | 5,142.6         | 646.3          | 1,619.5         | 539.0          | 1,080.5         | 1,191.3         | 235.1          | 956.3          | 2,655.5             | 420.7          | 2,234.8         | 1,152.2         | 281.2          | 871.0          |
| <b>Female</b>                         | <b>33,877.2</b> | <b>10,689.4</b> | <b>23,187.8</b> | <b>3,656.7</b> | <b>8,085.7</b>  | <b>2,703.9</b> | <b>5,381.9</b>  | <b>6,122.4</b>  | <b>1,285.7</b> | <b>4,836.7</b> | <b>11,383.3</b>     | <b>1,870.4</b> | <b>9,512.9</b>  | <b>4,629.1</b>  | <b>1,172.7</b> | <b>3,456.4</b> |
| In the labor force                    | 17,434.0        | 5,490.9         | 11,943.2        | 1,924.2        | 4,287.8         | 1,435.3        | 2,852.5         | 3,260.6         | 659.8          | 2,600.8        | 5,707.2             | 912.9          | 4,794.3         | 2,254.2         | 558.7          | 1,695.6        |
| Not in the labor force over 15 years  | 9,496.6         | 3,108.4         | 6,388.2         | 1,099.0        | 2,238.7         | 740.3          | 1,498.4         | 1,724.9         | 389.1          | 1,335.8        | 3,159.0             | 544.5          | 2,614.5         | 1,275.1         | 335.5          | 939.6          |
| Not in the labor force under 15 years | 6,946.6         | 2,090.1         | 4,856.5         | 633.6          | 1,559.2         | 528.3          | 1,031.0         | 1,136.9         | 236.8          | 900.1          | 2,517.1             | 412.9          | 2,104.2         | 1,099.8         | 278.6          | 821.2          |
| <b>Percentage</b>                     |                 |                 |                 |                |                 |                |                 |                 |                |                |                     |                |                 |                 |                |                |
| <b>Total</b>                          | <b>100.0</b>    | <b>100.0</b>    | <b>100.0</b>    | <b>100.0</b>   | <b>100.0</b>    | <b>100.0</b>   | <b>100.0</b>    | <b>100.0</b>    | <b>100.0</b>   | <b>100.0</b>   | <b>100.0</b>        | <b>100.0</b>   | <b>100.0</b>    | <b>100.0</b>    | <b>100.0</b>   | <b>100.0</b>   |
| In the labor force                    | 57.3            | 56.3            | 57.7            | 57.6           | 58.4            | 57.7           | 58.8            | 58.7            | 56.1           | 59.4           | 56.5                | 53.8           | 57.0            | 55.1            | 53.2           | 55.8           |
| Not in the labor force over 15 years  | 21.4            | 23.2            | 20.6            | 23.7           | 21.5            | 21.9           | 21.3            | 22.1            | 24.8           | 21.4           | 20.7                | 23.5           | 20.2            | 20.3            | 22.3           | 19.7           |
| Not in the labor force under 15 years | 21.3            | 20.5            | 21.7            | 18.7           | 20.1            | 20.4           | 20.0            | 19.2            | 19.1           | 19.3           | 22.8                | 22.7           | 22.8            | 24.5            | 24.6           | 24.5           |
| <b>Male</b>                           | <b>100.0</b>    | <b>100.0</b>    | <b>100.0</b>    | <b>100.0</b>   | <b>100.0</b>    | <b>100.0</b>   | <b>100.0</b>    | <b>100.0</b>    | <b>100.0</b>   | <b>100.0</b>   | <b>100.0</b>        | <b>100.0</b>   | <b>100.0</b>    | <b>100.0</b>    | <b>100.0</b>   | <b>100.0</b>   |
| In the labor force                    | 63.3            | 61.6            | 64.0            | 63.3           | 64.1            | 62.7           | 64.7            | 64.3            | 61.3           | 65.0           | 62.9                | 58.9           | 63.6            | 61.7            | 59.1           | 62.5           |
| Not in the labor force over 15 years  | 14.5            | 16.7            | 13.6            | 16.5           | 14.9            | 15.9           | 14.4            | 15.8            | 18.9           | 15.0           | 13.6                | 17.7           | 12.9            | 13.0            | 15.5           | 12.2           |
| Not in the labor force under 15 years | 22.2            | 21.6            | 22.4            | 20.2           | 21.0            | 21.4           | 20.9            | 19.9            | 19.8           | 20.0           | 23.5                | 23.4           | 23.5            | 25.3            | 25.4           | 25.3           |
| <b>Female</b>                         | <b>100.0</b>    | <b>100.0</b>    | <b>100.0</b>    | <b>100.0</b>   | <b>100.0</b>    | <b>100.0</b>   | <b>100.0</b>    | <b>100.0</b>    | <b>100.0</b>   | <b>100.0</b>   | <b>100.0</b>        | <b>100.0</b>   | <b>100.0</b>    | <b>100.0</b>    | <b>100.0</b>   | <b>100.0</b>   |
| In the labor force                    | 51.5            | 51.4            | 51.5            | 52.6           | 53.0            | 53.1           | 53.0            | 53.3            | 51.3           | 53.8           | 50.1                | 48.8           | 50.4            | 48.7            | 47.6           | 49.1           |
| Not in the labor force over 15 years  | 28.0            | 29.1            | 27.6            | 30.1           | 27.7            | 27.4           | 27.8            | 28.2            | 30.3           | 27.6           | 27.8                | 29.1           | 27.5            | 27.5            | 28.6           | 27.2           |
| Not in the labor force under 15 years | 20.5            | 19.6            | 20.9            | 17.3           | 19.3            | 19.5           | 19.2            | 18.6            | 18.4           | 18.6           | 22.1                | 22.1           | 22.1            | 23.8            | 23.8           | 23.8           |

## 2. Labor force participation

Table C shows the labor force participation rates which was defined as the percentage of the population in the total labor force to the population 15 years of age and

over was 72.8 per cent, and it shows that persons in non-municipal areas had higher participation rates than the municipal areas (73.7 per cent compared with 70.8 per cent).

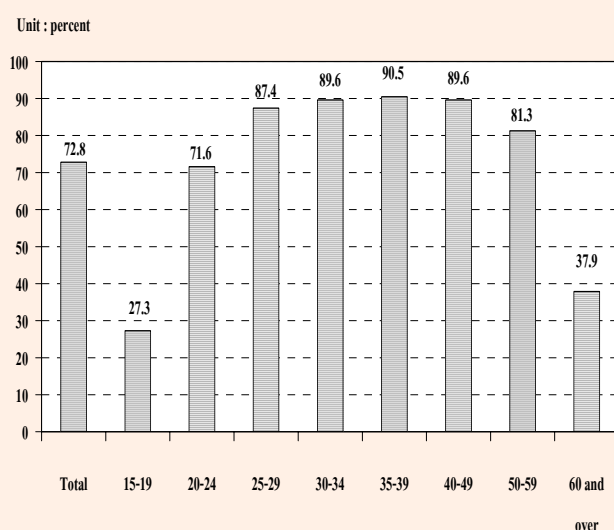
**TABLE C LABOR FORCE PARTICIPATION RATES BY AGE GROUP, SEX, REGION AND AREA**

(Percentage)

| Age group<br>(Years)<br>and sex | Whole kingdom |             |             | Bangkok     | Central region |             |             | Northern region |             |             | Northeastern region |             |             | Southern region |             |             |
|---------------------------------|---------------|-------------|-------------|-------------|----------------|-------------|-------------|-----------------|-------------|-------------|---------------------|-------------|-------------|-----------------|-------------|-------------|
|                                 | Total         | M.A.        | Non-M.A.    |             | Total          | M.A.        | Non-M.A.    | Total           | M.A.        | Non-M.A.    | Total               | M.A.        | Non-M.A.    | Total           | M.A.        | Non-M.A.    |
| <b>Total</b>                    | <b>72.8</b>   | <b>70.8</b> | <b>73.7</b> | <b>70.9</b> | <b>73.1</b>    | <b>72.5</b> | <b>73.4</b> | <b>72.7</b>     | <b>69.3</b> | <b>73.6</b> | <b>73.2</b>         | <b>69.6</b> | <b>73.9</b> | <b>73.1</b>     | <b>70.5</b> | <b>73.9</b> |
| 15-19                           | 27.3          | 21.9        | 29.3        | 22.2        | 29.6           | 26.5        | 31.1        | 23.4            | 15.5        | 25.4        | 27.9                | 19.1        | 29.6        | 29.4            | 23.4        | 31.3        |
| 20-24                           | 71.6          | 64.1        | 74.5        | 60.6        | 72.8           | 70.3        | 74.0        | 72.3            | 59.3        | 75.6        | 72.1                | 62.3        | 73.9        | 73.0            | 66.2        | 75.2        |
| 25-29                           | 87.4          | 89.0        | 86.6        | 88.7        | 89.9           | 90.0        | 89.9        | 87.9            | 89.7        | 87.4        | 85.0                | 86.7        | 84.7        | 86.9            | 90.8        | 85.6        |
| 30-34                           | 89.6          | 90.1        | 89.3        | 89.3        | 89.8           | 91.2        | 89.1        | 90.3            | 90.4        | 90.2        | 90.0                | 90.7        | 89.8        | 87.4            | 88.7        | 87.0        |
| 35-39                           | 90.5          | 90.4        | 90.5        | 89.6        | 90.5           | 90.6        | 90.4        | 91.2            | 91.6        | 91.1        | 90.5                | 91.4        | 90.4        | 90.3            | 90.3        | 90.3        |
| 40-49                           | 89.6          | 87.5        | 90.6        | 85.2        | 89.0           | 87.9        | 89.6        | 91.4            | 89.7        | 91.8        | 90.0                | 89.4        | 90.2        | 90.7            | 88.4        | 91.5        |
| 50-59                           | 81.3          | 76.0        | 83.7        | 70.1        | 79.0           | 77.2        | 79.9        | 83.4            | 80.3        | 84.2        | 84.2                | 80.0        | 85.0        | 84.6            | 81.0        | 85.9        |
| 60and over                      | 37.9          | 29.1        | 41.6        | 23.1        | 32.9           | 28.3        | 35.0        | 38.5            | 34.1        | 39.6        | 44.0                | 34.7        | 45.7        | 40.9            | 32.3        | 43.7        |
| <b>Male</b>                     | <b>81.3</b>   | <b>78.7</b> | <b>82.5</b> | <b>79.4</b> | <b>81.1</b>    | <b>79.7</b> | <b>81.8</b> | <b>80.3</b>     | <b>76.4</b> | <b>81.2</b> | <b>82.2</b>         | <b>77.0</b> | <b>83.2</b> | <b>82.6</b>     | <b>79.2</b> | <b>83.7</b> |
| 15-19                           | 34.1          | 26.6        | 36.8        | 26.0        | 36.0           | 32.5        | 37.5        | 30.0            | 20.8        | 32.3        | 34.4                | 23.4        | 36.5        | 38.9            | 27.4        | 42.5        |
| 20-24                           | 80.1          | 69.1        | 84.2        | 62.0        | 80.3           | 74.3        | 83.0        | 80.4            | 65.9        | 83.9        | 81.7                | 68.5        | 84.2        | 83.8            | 76.3        | 86.1        |
| 25-29                           | 94.5          | 94.0        | 94.7        | 92.7        | 94.7           | 95.0        | 94.6        | 96.1            | 95.2        | 96.3        | 93.3                | 91.7        | 93.6        | 96.3            | 97.5        | 95.8        |
| 30-34                           | 96.0          | 96.6        | 95.7        | 96.4        | 96.2           | 96.8        | 95.8        | 95.3            | 95.9        | 95.1        | 95.6                | 96.2        | 95.5        | 97.1            | 97.8        | 96.9        |
| 35-39                           | 96.4          | 96.8        | 96.2        | 96.6        | 96.1           | 96.5        | 95.8        | 96.8            | 96.6        | 96.8        | 95.9                | 96.4        | 95.8        | 97.8            | 98.9        | 97.4        |
| 40-49                           | 96.6          | 96.1        | 96.9        | 96.2        | 96.3           | 95.4        | 96.7        | 96.0            | 95.9        | 96.1        | 96.9                | 96.2        | 97.1        | 97.7            | 97.9        | 97.7        |
| 50-59                           | 92.2          | 88.1        | 94.0        | 85.3        | 90.3           | 88.2        | 91.3        | 92.6            | 89.0        | 93.5        | 94.7                | 91.0        | 95.4        | 94.3            | 91.9        | 95.1        |
| 60and over                      | 50.6          | 37.7        | 55.8        | 30.8        | 43.2           | 35.1        | 46.8        | 49.8            | 44.6        | 51.1        | 60.4                | 45.8        | 63.1        | 52.9            | 40.5        | 56.8        |
| <b>Female</b>                   | <b>64.7</b>   | <b>63.9</b> | <b>65.2</b> | <b>63.7</b> | <b>65.7</b>    | <b>66.0</b> | <b>65.6</b> | <b>65.4</b>     | <b>62.9</b> | <b>66.1</b> | <b>64.4</b>         | <b>62.6</b> | <b>64.7</b> | <b>63.9</b>     | <b>62.5</b> | <b>64.3</b> |
| 15-19                           | 20.2          | 17.2        | 21.3        | 18.7        | 23.0           | 20.4        | 24.2        | 16.4            | 10.3        | 17.9        | 21.0                | 14.8        | 22.3        | 19.3            | 19.4        | 19.3        |
| 20-24                           | 62.7          | 59.2        | 64.1        | 59.3        | 65.3           | 66.5        | 64.6        | 63.7            | 52.6        | 66.5        | 61.7                | 55.9        | 62.9        | 61.7            | 56.0        | 63.5        |
| 25-29                           | 80.1          | 84.4        | 78.0        | 85.3        | 85.2           | 85.2        | 85.2        | 79.2            | 84.2        | 77.8        | 76.0                | 81.4        | 74.9        | 77.2            | 84.2        | 74.9        |
| 30-34                           | 83.2          | 84.1        | 82.7        | 83.3        | 83.5           | 85.8        | 82.2        | 85.1            | 85.1        | 85.1        | 84.2                | 85.3        | 83.9        | 77.7            | 80.0        | 76.9        |
| 35-39                           | 84.9          | 84.7        | 85.0        | 83.6        | 85.2           | 85.2        | 85.2        | 85.9            | 87.2        | 85.6        | 85.4                | 86.7        | 85.2        | 83.1            | 82.5        | 83.4        |
| 40-49                           | 83.0          | 79.8        | 84.6        | 75.9        | 82.4           | 81.1        | 83.0        | 87.1            | 84.2        | 87.8        | 83.4                | 83.1        | 83.4        | 84.0            | 79.8        | 85.4        |
| 50-59                           | 71.3          | 65.3        | 74.2        | 57.1        | 69.0           | 67.5        | 69.7        | 74.7            | 72.6        | 75.2        | 74.3                | 70.0        | 75.2        | 75.6            | 71.2        | 77.1        |
| 60and over                      | 27.8          | 22.5        | 30.1        | 17.5        | 25.0           | 23.2        | 25.9        | 29.1            | 25.9        | 30.0        | 30.8                | 25.9        | 31.7        | 31.3            | 25.9        | 33.0        |

The participation rates were relatively high in almost every age-group, even in the age-group 15-19 at which the rates in non-municipal areas were higher than municipal areas. This was partly because in the agricultural households, the members who were students could help their families during the busy season. Whereas, this aged group in the municipal areas were mostly students.

**FIGURE 2 LABOR FORCE PARTICIPATION RATES BY AGE GROUP (YEARS)**



**TABLE D LABOR FORCE PARTICIPATION RATES BY MARITAL STATUS, SEX AND AREA**

(Percentage)

| Area and sex               | Total       | Marital status |             |             |             |             |                            |
|----------------------------|-------------|----------------|-------------|-------------|-------------|-------------|----------------------------|
|                            |             | Single         | Married     | Widowed     | Divorced    | Separated   | Married do not know status |
| <b>Total</b>               | <b>72.8</b> | <b>59.2</b>    | <b>81.5</b> | <b>38.3</b> | <b>80.8</b> | <b>80.2</b> | <b>87.1</b>                |
| Male                       | 81.3        | 64.8           | 90.4        | 44.4        | 86.9        | 86.0        | 88.1                       |
| Female                     | 64.7        | 51.8           | 73.0        | 36.8        | 77.4        | 76.4        | 86.8                       |
| <b>Municipal areas</b>     | <b>70.8</b> | <b>62.6</b>    | <b>78.4</b> | <b>36.4</b> | <b>80.1</b> | <b>78.9</b> | <b>86.2</b>                |
| Male                       | 78.7        | 64.9           | 87.4        | 39.0        | 82.6        | 81.0        | 85.8                       |
| Female                     | 63.9        | 60.2           | 69.5        | 35.8        | 79.0        | 77.6        | 86.3                       |
| <b>Non-municipal areas</b> | <b>73.7</b> | <b>57.3</b>    | <b>82.7</b> | <b>39.1</b> | <b>81.2</b> | <b>81.0</b> | <b>90.4</b>                |
| Male                       | 82.5        | 64.7           | 91.6        | 46.5        | 89.0        | 88.6        | 100.0                      |
| Female                     | 65.2        | 45.4           | 74.3        | 37.2        | 76.4        | 75.7        | 88.4                       |

Considering sex differentials, it is found that males participated in the labor force more than females (81.3 and 64.7 per cent respectively) . It was true in both areas and every region.

Table D shows that the married participated the highest in the labor force (81.5 per cent) and males participation rates were the highest among the married about 90.4 per cent and females, the highest rate was among the divorced about 77.4 per cent. The results also show that in municipal area, the divorced participated the highest in the labor force, about 80.1 per cent, 87.4 per cent for married males and 79.0 per cent for divorced females. In non-municipal area, the married participated the highest in the labor force about 82.7 per cent, 91.6 per cent for married males and 76.4 per cent for divorced females (excluded the unknown status who ever married were in the labor force only 0.01 per cent of the total labor force).

Table E illustrates the participation rates by educational attainment, area and sex. It shows that levels of education at which people seem to get more interested in working than at other levels were the higher level,

elementary and less than elementary level. Those who completed and lower secondary level.

The participation rates in non-municipal areas are mostly higher than in municipal areas, all level.

FIGURE 3 LABOR FORCE PARTICIPATION RATES BY LEVEL OF EDUCATIONAL

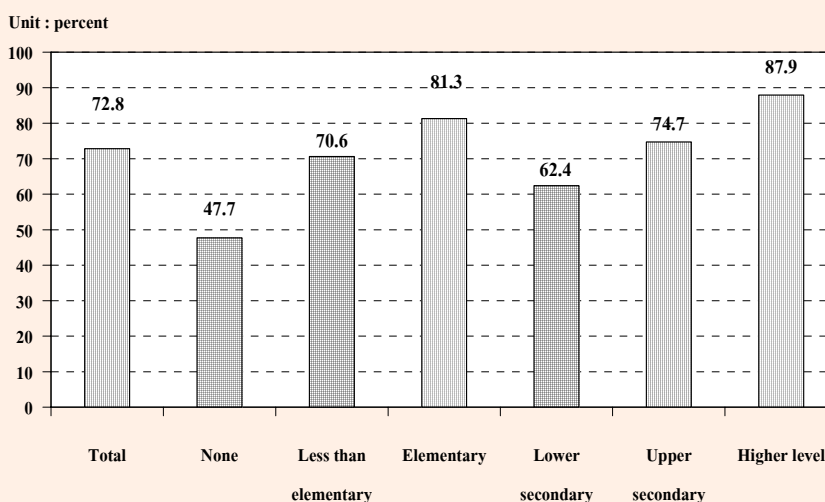


TABLE E LABOR FORCE PARTICIPATION RATES BY LEVEL OF EDUCATIONAL ATTAINMENT, AREA AND SEX

(Percentage)

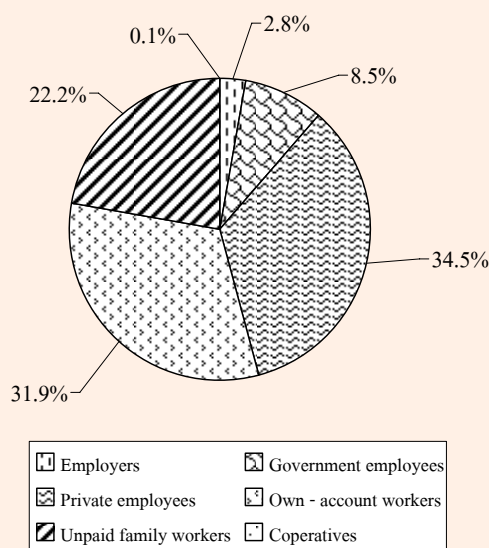
| Area and sex    | Level of educational attainment |             |                      |             |                 |                       |             |                  |              |                            |                      | Others <sup>1/</sup> | Unknown     |
|-----------------|---------------------------------|-------------|----------------------|-------------|-----------------|-----------------------|-------------|------------------|--------------|----------------------------|----------------------|----------------------|-------------|
|                 | Total                           | None        | Less than elementary | Elementary  | Lower secondary | Upper secondary level |             |                  | Higher level |                            | Others <sup>1/</sup> |                      |             |
|                 |                                 |             |                      |             |                 | General/academic      | Vocational  | Teacher training | Academic     | Higher technical education |                      |                      |             |
| <b>Total</b>    | <b>72.8</b>                     | <b>47.7</b> | <b>70.6</b>          | <b>81.3</b> | <b>62.4</b>     | <b>74.7</b>           | <b>69.7</b> | <b>55.2</b>      | <b>90.3</b>  | <b>85.5</b>                | <b>84.6</b>          | <b>72.6</b>          | <b>80.5</b> |
| Male            | 81.3                            | 61.4        | 81.2                 | 87.7        | 72.1            | 82.9                  | 77.0        | 62.8             | 92.5         | 90.2                       | 84.4                 | 93.6                 | 83.8        |
| Female          | 64.7                            | 40.9        | 62.0                 | 74.3        | 51.4            | 65.6                  | 60.2        | 49.3             | 88.6         | 80.5                       | 84.7                 | 47.0                 | 76.4        |
| <b>M.A.</b>     | <b>70.8</b>                     | <b>42.9</b> | <b>62.6</b>          | <b>78.3</b> | <b>61.8</b>     | <b>67.3</b>           | <b>71.6</b> | <b>46.8</b>      | <b>89.2</b>  | <b>85.1</b>                | <b>78.0</b>          | <b>75.5</b>          | <b>76.0</b> |
| Male            | 78.7                            | 56.5        | 74.7                 | 85.0        | 69.8            | 74.7                  | 79.0        | 65.9             | 91.2         | 90.6                       | 78.3                 | 89.2                 | 78.7        |
| Female          | 63.9                            | 37.0        | 54.0                 | 71.4        | 52.8            | 59.5                  | 62.4        | 24.3             | 87.5         | 79.5                       | 77.9                 | 60.9                 | 73.5        |
| <b>Non-M.A.</b> | <b>73.7</b>                     | <b>49.2</b> | <b>73.0</b>          | <b>82.2</b> | <b>62.7</b>     | <b>79.3</b>           | <b>68.1</b> | <b>62.8</b>      | <b>92.6</b>  | <b>85.9</b>                | <b>90.7</b>          | <b>71.0</b>          | <b>87.6</b> |
| Male            | 82.5                            | 62.8        | 82.9                 | 88.5        | 73.1            | 87.9                  | 75.2        | 58.2             | 95.2         | 89.9                       | 89.0                 | 95.8                 | 90.0        |
| Female          | 65.2                            | 42.1        | 64.5                 | 75.2        | 50.8            | 69.5                  | 58.3        | 65.0             | 90.7         | 81.5                       | 92.0                 | 38.3                 | 83.2        |

<sup>1/</sup> Including short course vocational

### 3. Employed labor force

**3.1 Work status :** (Table F) The highest proportion of the total employed person was employees or about 43.0 per cent and of these 4 in 5 were employed in private sector, followed by own account workers (31.9 per cent). The unpaid family workers and employer which accounted for 22.2 and 2.8 per cent of the total employed. While the percentage of members of producers' cooperatives was very less about 0.1 per cent of the total employed persons.

FIGURE 4 PERCENTAGE OF EMPLOYED PERSONS BY WORK STATUS



The majority of employed persons in both areas were employees, followed by own account workers. In municipal area, about 57.3 per cent were employees, among these, mostly working in private sector (44.2 per cent) while only 13.1 per cent were government employees. In non-municipal areas, about 36.8 per cent were employees, among these, 30.3 per cent working in private sector, followed by own account workers (34.7 per cent). For the proportion of unpaid

family workers in municipal areas was rather low compared with the non-municipal areas (13.2 per cent and 26.2 per cent respectively).

When work status was considered by regions, it was found that the percentages of those employed in all regions include Bangkok were largely worked as employees, follower by own account workers except the Northeast region, large percentages of employed persons were worked as own account workers about 38.9 per cent followed by unpaid family worker and employees (31.4 percent and 28.1 per cent respectively).

**3.2 Industry :** (Table G) About 42.1 per cent of the total employed persons worked in agricultural sector and about 57.9 per cent in non-agricultural sector. The highest proportions of the employed persons was in the wholesale and retail trade 15.4 per cent, followed by manufacturing 13.9 per cent. The next was hotel and restaurants 6.4 per cent, construction 5.3 per cent, public administration 3.4 per cent, transport storage and education show equally the same rate 2.9 per cent. The rest shared in the other industries.

Most employed persons in municipal area worked in non-agriculture sector 90.3 per cent, the principal activities were wholesale and retail trade (24.5 per cent), followed by manufacturing 17.9 per cent, hotel and restaurants 12.5 per cent, While most of those in the non-municipal areas worked in agricultural sector 56.2 per cent.

Considering regional differentials, it was found that the majority of employed persons in the

**TABLE F NUMBER AND PERCENTAGE OF EMPLOYED PERSONS BY WORK STATUS, REGION AND AREA**

| WORK STATUS                       | Whole Kingdom   |                 |                 | Bangkok        | Central Region |                |                | Northern Region |                |                | Northeastern Region |                |                 | Southern Region |                |                |
|-----------------------------------|-----------------|-----------------|-----------------|----------------|----------------|----------------|----------------|-----------------|----------------|----------------|---------------------|----------------|-----------------|-----------------|----------------|----------------|
|                                   | Total           | M.A.            | Non-M.A.        |                | Total          | M.A.           | Non-M.A.       | Total           | M.A.           | Non-M.A.       | Total               | M.A.           | Non-M.A.        | Total           | M.A.           | Non-M.A.       |
| <b>Number ('000)</b>              |                 |                 |                 |                |                |                |                |                 |                |                |                     |                |                 |                 |                |                |
| <b>Total</b>                      | <b>37,550.0</b> | <b>11,362.7</b> | <b>26,187.3</b> | <b>3,894.5</b> | <b>9,076.8</b> | <b>2,977.1</b> | <b>6,099.8</b> | <b>7,010.5</b>  | <b>1,362.9</b> | <b>5,647.5</b> | <b>12,608.2</b>     | <b>1,941.4</b> | <b>10,666.9</b> | <b>4,960.0</b>  | <b>1,186.8</b> | <b>3,773.2</b> |
| Employers                         | 1,045.5         | 486.5           | 559.0           | 200.7          | 303.7          | 108.6          | 195.1          | 180.0           | 52.8           | 127.2          | 180.4               | 56.5           | 123.9           | 180.6           | 67.8           | 112.9          |
| Government employees              | 3,202.0         | 1,490.2         | 1,711.8         | 410.1          | 706.4          | 307.2          | 399.2          | 647.6           | 232.8          | 414.7          | 1,015.1             | 378.7          | 636.4           | 422.8           | 161.4          | 261.5          |
| Private employees                 | 12,946.4        | 5,022.8         | 7,923.6         | 2,183.3        | 4,402.0        | 1,522.9        | 2,879.2        | 2,091.1         | 424.8          | 1,666.3        | 2,525.1             | 455.5          | 2,069.6         | 1,744.9         | 436.4          | 1,308.5        |
| Own - account workers             | 11,958.2        | 2,863.2         | 9,094.9         | 794.7          | 2,266.4        | 678.5          | 1,587.9        | 2,327.9         | 419.9          | 1,907.9        | 4,900.9             | 622.2          | 4,278.7         | 1,668.4         | 348.0          | 1,320.4        |
| Unpaid family workers             | 8,349.9         | 1,495.3         | 6,854.6         | 305.8          | 1,393.7        | 359.5          | 1,034.2        | 1,756.1         | 231.6          | 1,524.4        | 3,955.7             | 425.6          | 3,530.1         | 938.5           | 172.7          | 765.8          |
| Members of Producers Cooperatives | 48.1            | 4.6             | 43.4            | -              | 4.6            | 0.4            | 4.2            | 7.7             | 0.8            | 6.9            | 31.1                | 2.9            | 28.2            | 4.7             | 0.6            | 4.2            |
| <b>Percentage</b>                 |                 |                 |                 |                |                |                |                |                 |                |                |                     |                |                 |                 |                |                |
| <b>Total</b>                      | <b>100.0</b>    | <b>100.0</b>    | <b>100.0</b>    | <b>100.0</b>   | <b>100.0</b>   | <b>100.0</b>   | <b>100.0</b>   | <b>100.0</b>    | <b>100.0</b>   | <b>100.0</b>   | <b>100.0</b>        | <b>100.0</b>   | <b>100.0</b>    | <b>100.0</b>    | <b>100.0</b>   | <b>100.0</b>   |
| Employers                         | 2.8             | 4.3             | 2.1             | 5.2            | 3.4            | 3.7            | 3.2            | 2.6             | 3.8            | 2.3            | 1.4                 | 2.9            | 1.2             | 3.6             | 5.7            | 3.0            |
| Government employees              | 8.5             | 13.1            | 6.5             | 10.5           | 7.8            | 10.3           | 6.5            | 9.2             | 17.0           | 7.3            | 8.1                 | 19.5           | 6.0             | 8.5             | 13.6           | 6.9            |
| Private employees                 | 34.5            | 44.2            | 30.3            | 56.1           | 48.5           | 51.2           | 47.2           | 29.8            | 31.1           | 29.5           | 20.0                | 23.5           | 19.4            | 35.2            | 36.8           | 34.7           |
| Own - account workers             | 31.9            | 25.2            | 34.7            | 20.4           | 25.0           | 22.8           | 26.0           | 33.2            | 30.8           | 33.8           | 38.9                | 32.1           | 40.1            | 33.6            | 29.3           | 35.0           |
| Unpaid family workers             | 22.2            | 13.2            | 26.2            | 7.9            | 15.4           | 12.1           | 17.0           | 25.1            | 17.0           | 27.0           | 31.4                | 21.9           | 33.1            | 18.9            | 14.6           | 20.3           |
| Members of Producers Cooperatives | 0.1             | 0.0             | 0.2             | -              | 0.1            | 0.0            | 0.1            | 0.1             | 0.0            | 0.1            | 0.3                 | 0.2            | 0.3             | 0.1             | 0.1            | 0.1            |







region were non-agricultural sector, especially the Central Region 73.8 per cent, the next was the South Region 55.0 per cent, North 49.8 per cent and Northeast 39.5 per cent the highest employed. For Bangkok the majority of employed person were considerably high in non-agricultural sector (98.9 per cent).

**3.3 Occupation :** From the distribution of employed persons by occupation (table H), skilled agricultural and fishery workers constituted the bulk of the employed labor force 37.6 per cent. The occupation group with the next largest number of workers was service workers and shop and market sales workers which accounted for 16.9 per cent, and elementary occupations workers about 11.9 per cent, and craft and related trades workers about 11.0 per cent, and the rest were other occupations.

Again the pattern of occupation in the municipal areas was quite different from that of the non-municipal areas and the whole kingdom. In the municipal areas, about 29.3 per cent of the total employed were service workers and shop and market sales workers, 12.5 per cent were craft and same related trades workers, 11.3 per cent were elementary occupation, and plant and machine operators and assemblers. The occupational patterns in non-municipal areas were similar to the whole kingdom, which the largest number of workers was skilled agricultural and fishery workers 50.2 per cent, followed by elementary occupations workers 12.2 per cent,

service workers and shop and market sales workers 11.6 per cent, and craft and related trades workers about 10.4 per cent.

In every region, the occupational patterns were not quite different. That was the principal occupation was agricultural occupation especially in the Northeast, comprised 55.5 per cent, the next was the South 43.3 per cent. The next was the North 42.7 per cent and central 21.3 per cent. But in the Bangkok, service workers and shop and market sales workers constituted about 27.1 per cent of the total employed. Around 13.9 per cent were plant and machine operators, and 12.2 per cent were craftsmen and related trade workers, elementary occupation 11.3 per cent, technicians and associate professionals about 10.1 per cent, Professionals about 8.6 per cent and Clerks about 8.2 per cent, and the rest were other occupations.

**3.4 Education :** The distribution of employed persons by level of educational attainment (Table I) illustrated that of the employed people, vast majority had low level of education, 56.9 per cent only held some elementary level or none at all, while 27.8 per cent in secondary level, 14.8 per cent in higher level and the rest were others.

Among people residing in municipal areas who were employed and completed more than elementary level (secondary and higher level) was higher than those live in non-municipal areas (59.3 per cent and 35.4 per cent respectively). In municipal areas, 39.9 per cent of employed person had some elementary level or none at all, 31.3

**TABLE H NUMBER AND PERCENTAGE OF EMPLOYED PERSONS BY OCCUPATION, REGION AND AREA**

| OCCUPATION   | Whole Kingdom        |                 |                 | Bangkok        | Central Region |                |                | Northern Region |                |                | Northeastern Region |                |                 | Southern Region |                |                |
|--|----------------------|-----------------|-----------------|----------------|----------------|----------------|----------------|-----------------|----------------|----------------|---------------------|----------------|-----------------|-----------------|----------------|----------------|
|  | Total                | M.A.            | Non-M.A.        | Total          | M.A.           | Non-M.A.       | Total          | M.A.            | Non-M.A.       | Total          | M.A.                | Non-M.A.       | Total           | M.A.            | Non-M.A.       |                |
|  | <b>Number ('000)</b> |                 |                 |                |                |                |                |                 |                |                |                     |                |                 |                 |                |                |
| <b>Total</b>   | <b>37,580.0</b>      | <b>11,362.7</b> | <b>26,187.3</b> | <b>3,894.5</b> | <b>9,076.8</b> | <b>2,977.1</b> | <b>6,099.8</b> | <b>7,010.5</b>  | <b>1,362.9</b> | <b>5,647.5</b> | <b>12,608.2</b>     | <b>1,941.4</b> | <b>10,666.9</b> | <b>4,960.0</b>  | <b>1,186.8</b> | <b>3,773.2</b> |
| 1. Legislator, senior officials and manage           | 1,093.9              | 542.4           | 551.5           | 275.9          | 298.0          | 118.2          | 179.7          | 151.4           | 41.7           | 109.7          | 244.7               | 55.3           | 189.4           | 123.9           | 51.3           | 72.6           |
| 2. Professionals                                     | 1,529.1              | 872.7           | 656.4           | 335.0          | 360.5          | 177.3          | 183.2          | 251.1           | 109.2          | 141.9          | 403.2               | 177.3          | 226.0           | 179.2           | 73.9           | 105.3          |
| 3. Technicians and associate professionals           | 1,499.8              | 902.8           | 597.1           | 394.2          | 563.0          | 265.7          | 297.3          | 180.4           | 72.4           | 108.1          | 209.1               | 98.6           | 110.5           | 153.1           | 71.9           | 81.2           |
| 4. Clerks  | 1,343.7              | 739.4           | 604.3           | 318.2          | 408.9          | 185.5          | 223.4          | 205.7           | 78.2           | 127.5          | 265.8               | 91.9           | 173.9           | 145.2           | 65.7           | 79.5           |
| 5. Service workers and shop and market sales workers | 6,358.2              | 3,332.7         | 3,025.5         | 1,055.6        | 1,704.5        | 827.4          | 877.1          | 1,064.6         | 418.2          | 646.4          | 1,537.7             | 602.0          | 935.7           | 995.9           | 429.7          | 566.2          |
| 6. Skilled agricultural and fishery workers          | 14,103.8             | 967.9           | 13,135.9        | 44.4           | 1,930.8        | 169.4          | 1,761.5        | 2,990.1         | 216.7          | 2,773.4        | 6,992.6             | 405.1          | 6,587.5         | 2,145.9         | 132.4          | 2,013.6        |
| 7. Craftsmen and related trades workers              | 4,130.4              | 1,418.9         | 2,711.5         | 474.8          | 1,199.1        | 391.8          | 807.3          | 798.8           | 176.0          | 622.8          | 1,122.6             | 217.9          | 904.8           | 535.1           | 158.4          | 376.6          |
| 8. Plant and machine operators and assemblers        | 2,990.3              | 1,284.6         | 1,705.7         | 541.8          | 1,357.3        | 504.0          | 853.3          | 334.1           | 67.7           | 266.4          | 550.9               | 100.1          | 450.8           | 206.2           | 70.9           | 135.3          |
| 9. Elementary occupations                            | 4,477.3              | 1,282.4         | 3,194.9         | 439.9          | 1,246.2        | 333.7          | 912.5          | 1,034.3         | 183.0          | 851.3          | 1,281.6             | 193.3          | 1,088.2         | 475.3           | 132.4          | 342.9          |
| 10. Workers not classifiable by occupation           | 23.6                 | 19.0            | 4.5             | 14.7           | 8.6            | 4.1            | 4.5            | 0.0             | 0.0            | 0.0            | 0.0                 | 0.0            | 0.0             | 0.0             | 0.0            | 0.0            |
|  | <b>Percentage</b>    |                 |                 |                |                |                |                |                 |                |                |                     |                |                 |                 |                |                |
| <b>Total</b>   | <b>100.0</b>         | <b>100.0</b>    | <b>100.0</b>    | <b>100.0</b>   | <b>100.0</b>   | <b>100.0</b>   | <b>100.0</b>   | <b>100.0</b>    | <b>100.0</b>   | <b>100.0</b>   | <b>100.0</b>        | <b>100.0</b>   | <b>100.0</b>    | <b>100.0</b>    | <b>100.0</b>   | <b>100.0</b>   |
| 1. Legislator, senior officials and manage           | 2.9                  | 4.8             | 2.1             | 7.1            | 3.3            | 4.0            | 3.0            | 2.2             | 3.1            | 1.9            | 1.9                 | 2.9            | 1.8             | 2.5             | 4.3            | 1.9            |
| 2. Professionals                                     | 4.1                  | 7.7             | 2.5             | 8.6            | 4.0            | 6.0            | 3.0            | 3.6             | 8.0            | 2.5            | 3.2                 | 9.1            | 2.1             | 3.6             | 6.2            | 2.8            |
| 3. Technicians and associate professionals           | 4.0                  | 7.9             | 2.3             | 10.1           | 6.2            | 8.9            | 4.9            | 2.6             | 5.3            | 1.9            | 1.7                 | 5.1            | 1.0             | 3.1             | 6.1            | 2.2            |
| 4. Clerks  | 3.6                  | 6.5             | 2.3             | 8.2            | 4.5            | 6.2            | 3.7            | 2.9             | 5.7            | 2.3            | 2.1                 | 4.7            | 1.6             | 2.9             | 5.5            | 2.1            |
| 5. Service workers and shop and market sales workers | 16.9                 | 29.3            | 11.6            | 27.1           | 18.8           | 27.8           | 14.4           | 15.2            | 30.7           | 11.5           | 12.2                | 31.0           | 8.8             | 20.1            | 36.2           | 15.0           |
| 6. Skilled agricultural and fishery workers          | 37.6                 | 8.5             | 50.2            | 1.1            | 21.3           | 5.7            | 28.9           | 42.7            | 15.9           | 49.1           | 55.5                | 20.9           | 61.8            | 43.3            | 11.2           | 53.4           |
| 7. Craftsmen and related trades workers              | 11.0                 | 12.5            | 10.4            | 12.2           | 13.2           | 13.2           | 13.2           | 11.4            | 12.9           | 11.0           | 8.9                 | 11.2           | 8.5             | 10.8            | 13.4           | 10.0           |
| 8. Plant and machine operators and assemblers        | 8.0                  | 11.3            | 6.5             | 13.9           | 15.0           | 16.9           | 14.0           | 4.8             | 5.0            | 4.7            | 4.4                 | 5.2            | 4.2             | 4.2             | 6.0            | 3.6            |
| 9. Elementary occupations                            | 11.9                 | 11.3            | 12.2            | 11.3           | 13.7           | 11.2           | 15.0           | 14.8            | 13.4           | 15.1           | 10.2                | 10.0           | 10.2            | 9.6             | 11.2           | 9.1            |
| 10. Workers not classifiable by occupation           | 0.1                  | 0.2             | 0.0             | 0.4            | 0.1            | 0.1            | 0.1            | -               | -              | -              | -                   | -              | -               | 0.0             | 0.0            | -              |

**TABLE I NUMBER AND PERCENTAGE OF EMPLOYED PERSON BY LEVEL OF EDUCATIONAL ATTAINMENT, REGION AND AREA**

| LEVEL OF EDUCATIONAL<br>ATTAINMENT | Whole Kingdom   |                 |                 | Bangkok        | Central Region |                |                | Northern Region |                |                | Northeastern Region |                |                 | Southern Region |                |                |
|------------------------------------|-----------------|-----------------|-----------------|----------------|----------------|----------------|----------------|-----------------|----------------|----------------|---------------------|----------------|-----------------|-----------------|----------------|----------------|
|                                    | Total           | M.A.            | Non-<br>M.A.    |                | Total          | M.A.           | Non-<br>M.A.   | Total           | M.A.           | Non-<br>M.A.   | Total               | M.A.           | Non-<br>M.A.    | Total           | M.A.           | Non-<br>M.A.   |
| <b>Number ('000)</b>               |                 |                 |                 |                |                |                |                |                 |                |                |                     |                |                 |                 |                |                |
| <b>Total</b>                       | <b>37,550.0</b> | <b>11,362.7</b> | <b>26,187.3</b> | <b>3,894.5</b> | <b>9,076.8</b> | <b>2,977.1</b> | <b>6,099.8</b> | <b>7,010.5</b>  | <b>1,362.9</b> | <b>5,647.5</b> | <b>12,608.2</b>     | <b>1,941.4</b> | <b>10,666.9</b> | <b>4,960.0</b>  | <b>1,186.8</b> | <b>3,773.2</b> |
| None                               | 1,142.8         | 242.0           | 900.8           | 65.3           | 259.2          | 65.9           | 193.3          | 437.7           | 55.1           | 382.6          | 182.1               | 23.2           | 158.8           | 198.5           | 32.5           | 166.1          |
| Less than Elementary               | 11,645.7        | 2,334.4         | 9,311.3         | 608.1          | 2,589.6        | 640.0          | 1,949.6        | 2,541.8         | 387.2          | 2,154.6        | 4,541.4             | 471.7          | 4,069.6         | 1,364.7         | 227.4          | 1,137.4        |
| Elementary                         | 8,603.6         | 1,968.0         | 6,635.6         | 690.0          | 1,845.8        | 519.7          | 1,326.1        | 1,382.2         | 189.5          | 1,192.7        | 3,510.9             | 360.5          | 3,150.4         | 1,174.6         | 208.2          | 966.5          |
| Lower Secondary                    | 5,669.1         | 1,737.4         | 3,931.7         | 581.5          | 1,527.5        | 503.3          | 1,024.1        | 962.1           | 174.0          | 788.0          | 1,791.3             | 275.9          | 1,515.4         | 806.7           | 202.7          | 604.1          |
| Upper Secondary Level              | 4,775.2         | 1,820.5         | 2,954.7         | 594.9          | 1,304.9        | 508.9          | 796.0          | 811.1           | 201.1          | 610.0          | 1,357.8             | 307.1          | 1,050.7         | 706.5           | 208.4          | 498.0          |
| General/Academic                   | 3,572.3         | 1,243.1         | 2,329.2         | 388.8          | 914.9          | 348.9          | 566.0          | 631.4           | 142.3          | 489.0          | 1,127.2             | 221.2          | 906.0           | 510.2           | 141.9          | 368.2          |
| Vocational                         | 1,187.9         | 571.3           | 616.6           | 205.5          | 386.2          | 158.5          | 227.7          | 173.7           | 57.0           | 116.6          | 227.3               | 84.8           | 142.5           | 195.2           | 65.4           | 129.8          |
| Teacher Training                   | 15.0            | 6.1             | 8.9             | 0.6            | 3.8            | 1.5            | 2.4            | 6.1             | 1.7            | 4.3            | 3.4                 | 1.1            | 2.3             | 1.1             | 1.1            | -              |
| Higher Level                       | 5,563.5         | 3,178.7         | 2,384.7         | 1,321.5        | 1,476.0        | 707.9          | 768.1          | 856.4           | 347.3          | 509.0          | 1,222.0             | 502.3          | 719.7           | 687.6           | 299.6          | 388.0          |
| Academic                           | 3,111.3         | 2,058.2         | 1,053.1         | 1,038.7        | 804.3          | 430.0          | 374.3          | 435.2           | 191.8          | 243.4          | 527.0               | 249.1          | 277.9           | 306.1           | 148.6          | 157.5          |
| Higher Technical Education         | 1,691.4         | 784.1           | 907.4           | 218.4          | 511.9          | 207.6          | 304.3          | 280.2           | 97.7           | 182.4          | 412.8               | 152.9          | 260.0           | 268.2           | 107.5          | 160.7          |
| Teacher Training                   | 760.7           | 336.4           | 424.3           | 64.5           | 159.8          | 70.3           | 89.5           | 141.0           | 57.8           | 83.2           | 282.2               | 100.4          | 181.8           | 113.3           | 43.5           | 69.8           |
| Others <sup>1/</sup>               | 23.6            | 8.8             | 14.8            | -              | 1.8            | 0.2            | 1.5            | 16.7            | 8.1            | 8.6            | -                   | -              | -               | 5.1             | 0.5            | 4.6            |
| Unknown                            | 126.8           | 72.9            | 53.9            | 33.1           | 72.2           | 31.1           | 41.1           | 2.5             | 0.3            | 2.1            | 2.8                 | 0.6            | 2.2             | 16.2            | 7.7            | 8.5            |
| <b>Percentage</b>                  |                 |                 |                 |                |                |                |                |                 |                |                |                     |                |                 |                 |                |                |
| <b>Total</b>                       | <b>100.0</b>    | <b>100.0</b>    | <b>100.0</b>    | <b>100.0</b>   | <b>100.0</b>   | <b>100.0</b>   | <b>100.0</b>   | <b>100.0</b>    | <b>100.0</b>   | <b>100.0</b>   | <b>100.0</b>        | <b>100.0</b>   | <b>100.0</b>    | <b>100.0</b>    | <b>100.0</b>   | <b>100.0</b>   |
| None                               | 3.0             | 2.1             | 3.4             | 1.7            | 2.9            | 2.2            | 3.2            | 6.2             | 4.0            | 6.8            | 1.4                 | 1.2            | 1.5             | 4.0             | 2.7            | 4.4            |
| Less than Elementary               | 31.0            | 20.5            | 35.6            | 15.6           | 28.5           | 21.5           | 32.0           | 36.3            | 28.4           | 38.2           | 36.0                | 24.3           | 38.2            | 27.5            | 19.2           | 30.1           |
| Elementary                         | 22.9            | 17.3            | 25.3            | 17.7           | 20.3           | 17.5           | 21.7           | 19.7            | 13.9           | 21.1           | 27.9                | 18.6           | 29.5            | 23.7            | 17.5           | 25.6           |
| Lower Secondary                    | 15.1            | 15.3            | 15.0            | 14.9           | 16.8           | 16.9           | 16.8           | 13.7            | 12.7           | 14.0           | 14.2                | 14.2           | 14.2            | 16.3            | 17.1           | 16.0           |
| Upper Secondary Level              | 12.7            | 16.0            | 11.3            | 15.3           | 14.4           | 17.1           | 13.1           | 11.6            | 14.7           | 10.8           | 10.8                | 15.8           | 9.9             | 14.2            | 17.6           | 13.2           |
| General/Academic                   | 9.5             | 10.9            | 8.9             | 10.0           | 10.1           | 11.7           | 9.3            | 9.0             | 10.4           | 8.7            | 8.9                 | 11.4           | 8.5             | 10.3            | 12.0           | 9.8            |
| Vocational                         | 3.2             | 5.0             | 2.4             | 5.3            | 4.3            | 5.3            | 3.7            | 2.5             | 4.1            | 2.1            | 1.8                 | 4.4            | 1.3             | 3.9             | 5.5            | 3.4            |
| Teacher Training                   | 0.0             | 0.1             | 0.0             | 0.0            | 0.0            | 0.1            | 0.0            | 0.1             | 0.1            | 0.1            | 0.0                 | 0.1            | 0.0             | 0.0             | 0.1            | -              |
| Higher Level                       | 14.8            | 28.0            | 9.1             | 33.9           | 16.3           | 23.8           | 12.6           | 12.2            | 25.4           | 9.0            | 9.7                 | 25.9           | 6.8             | 13.9            | 25.2           | 10.3           |
| Academic                           | 8.3             | 18.1            | 4.0             | 26.7           | 8.9            | 14.4           | 6.1            | 6.2             | 14.0           | 4.3            | 4.2                 | 12.8           | 2.6             | 6.2             | 12.5           | 4.2            |
| Higher Technical Education         | 4.5             | 6.9             | 3.5             | 5.6            | 5.6            | 7.0            | 5.0            | 4.0             | 7.1            | 3.2            | 3.3                 | 7.9            | 2.4             | 5.4             | 9.1            | 4.3            |
| Teacher Training                   | 2.0             | 3.0             | 1.6             | 1.7            | 1.8            | 2.4            | 1.5            | 2.0             | 4.2            | 1.5            | 2.2                 | 5.2            | 1.7             | 2.3             | 3.7            | 1.9            |
| Others <sup>1/</sup>               | 0.1             | 0.1             | 0.1             | -              | 0.0            | 0.0            | 0.0            | 0.2             | 0.6            | 0.2            | -                   | -              | -               | 0.1             | 0.0            | 0.1            |
| Unknown                            | 0.3             | 0.6             | 0.2             | 0.9            | 0.8            | 1.1            | 0.7            | 0.0             | 0.0            | 0.0            | 0.0                 | 0.0            | 0.0             | 0.3             | 0.7            | 0.2            |

<sup>1/</sup> Including short course vocational

per cent had secondary level and 28.0 per cent had higher level, whereas the corresponding educational level for employed persons in non-municipal areas were 64.3, 26.3 and 9.1 per cent respectively.

On the region level, the majority of employed persons in every region had some elementary level of education or none at all, especially the highest percentage in the Northeast about 65.3 per cent. The North shows the second highest in such level with 62.2 per cent, followed by the South with 55.2 per cent and the Central with 51.7 per cent. With regards to the secondary level of those employed persons, the Central shows the highest percentage with 31.2 per cent followed by the South, the North and the Northeast with 30.5, 25.3 and 25.0 respectively. It is also noted that at higher level of education, the Central also shows the highest percentage with 16.3 per cent, followed by the South with 13.9 per cent, the North with 12.2 per cent and the Northeast with 9.7 per cent.

For Bangkok, most of employed person completed more than elementary level (64.1

per cent), especially the high rate in the higher level (33.9 per cent).

#### 4. Unemployment

The unemployment rate is the ratio of the number of unemployed persons to the labor force expressed as a percentage. It depends therefore on the definition of unemployment as well as of the labor force adopted in the survey. Beginning from the survey in August 1982, unemployment has been measured, for a better understanding of the situation, in terms of persons available for works, including not only those actively looking for work but also those not looking for but available for works. As well, the classification of the labor force status or activity has been revised to include, besides the current labor force, the seasonally inactive labor force, to constitute what is described as the total labor force. Different unemployment rates can be computed for purposed of comparative analysis, using different measures of unemployment and labor force as given in Table J.

**TABLE J DIFFERENT RATES OF UNEMPLOYMENT, QUARTER 4: OCTOBER-DECEMBER 2008**

(Percentage)

| Labor force         | Actively looking for work | Total available for work |
|---------------------|---------------------------|--------------------------|
| Current labor force | 0.2                       | 1.3                      |
| Total labor force   | 0.2                       | 1.3                      |

In general, during the agricultural season, the unemployment rate calculated from the total labor force is very close to that obtained from the current labor force but in the slack season the rates are quite different.

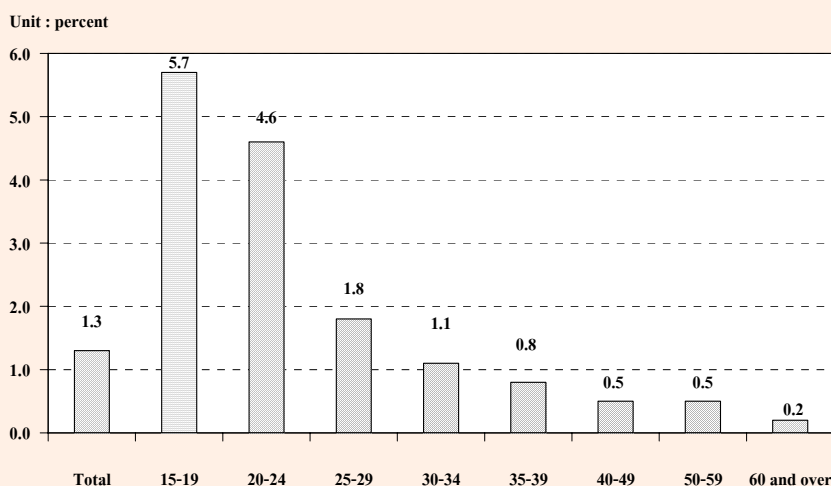
At this quarter of the survey, the rate of total unemployment or percentage of the total labor force who did not work but were available for work (total available for work) was about 1.3 per cent while the open unemployment which measured from those who were actively looking for work was 0.2 per cent.

Generally, any measurement of unemployment shows that the number of unemployed persons was among the off-season of

agriculture are more than the numbers among agriculture season of the same year.

Table K reveals that the rate of unemployment was rather high among the young population aged 15-29 years or those who just entered in the labor force. Of these the population aged 15-24 years (include males and females) had very high rates of unemployment, especially the population age 15-19 years had the highest rates (5.7 per cent). This reflects an increasingly widespread problem of unemployment among the young population with middle and high level of educational attainment since the young with secondary level, higher level or equivalent educational levels begin to enter the labor market at around this age-group.

FIGURE 5 UNEMPLOYMENT RATES BY AGE GROUP (YEARS)



**TABLE K UNEMPLOYMENT RATES BY AGE GROUP, SEX, REGION AND AREA**

(Percentage)

| Sex and age group (years) | Whole kingdom |            |            | Bangkok    | Central region |            |            | Northern region |            |            | Northeastern region |            |            | Southern region |            |            |
|---------------------------|---------------|------------|------------|------------|----------------|------------|------------|-----------------|------------|------------|---------------------|------------|------------|-----------------|------------|------------|
|                           | Total         | M.A.       | Non-M.A.   | Total      | M.A.           | Non-M.A.   | Total      | M.A.            | Non-M.A.   | Total      | M.A.                | Non-M.A.   | Total      | M.A.            | Non-M.A.   |            |
|                           |               |            |            |            |                |            |            |                 |            |            |                     |            |            |                 |            |            |
| <b>Total</b>              | <b>1.3</b>    | <b>1.5</b> | <b>1.3</b> | <b>1.4</b> | <b>1.5</b>     | <b>1.4</b> | <b>1.6</b> | <b>1.0</b>      | <b>1.7</b> | <b>0.8</b> | <b>1.1</b>          | <b>1.4</b> | <b>1.1</b> | <b>1.9</b>      | <b>2.1</b> | <b>1.9</b> |
| 15-19                     | 5.7           | 6.6        | 5.4        | 9.0        | 5.8            | 6.0        | 5.8        | 4.6             | 6.9        | 4.3        | 5.0                 | 6.0        | 4.9        | 6.8             | 4.6        | 7.4        |
| 20-24                     | 4.6           | 5.6        | 4.3        | 4.8        | 5.1            | 4.5        | 5.4        | 2.8             | 6.3        | 2.1        | 4.2                 | 5.0        | 4.0        | 7.0             | 9.9        | 6.2        |
| 25-29                     | 1.8           | 2.5        | 1.5        | 2.6        | 2.8            | 2.1        | 3.1        | 1.5             | 3.4        | 0.9        | 0.9                 | 2.4        | 0.6        | 1.9             | 2.3        | 1.8        |
| 30-34                     | 1.1           | 1.1        | 1.1        | 1.1        | 1.1            | 1.0        | 1.1        | 0.6             | 1.1        | 0.5        | 1.1                 | 0.8        | 1.2        | 1.5             | 1.2        | 1.6        |
| 35-39                     | 0.8           | 1.0        | 0.6        | 1.3        | 0.8            | 1.2        | 0.6        | 0.6             | 0.5        | 0.6        | 0.4                 | 0.6        | 0.4        | 1.2             | 0.9        | 1.3        |
| 40-49                     | 0.5           | 0.5        | 0.4        | 0.3        | 0.4            | 0.4        | 0.4        | 0.7             | 1.0        | 0.6        | 0.4                 | 0.6        | 0.4        | 0.4             | 0.7        | 0.3        |
| 50-59                     | 0.5           | 0.5        | 0.5        | 0.4        | 0.4            | 0.3        | 0.5        | 0.5             | 0.8        | 0.4        | 0.4                 | 0.5        | 0.4        | 0.7             | 0.6        | 0.8        |
| 60 and over               | 0.2           | 0.2        | 0.2        | -          | 0.3            | 0.3        | 0.3        | 0.2             | 0.1        | 0.3        | 0.2                 | 0.4        | 0.1        | 0.2             | -          | 0.3        |
| <b>Male</b>               | <b>1.4</b>    | <b>1.6</b> | <b>1.3</b> | <b>1.4</b> | <b>1.6</b>     | <b>1.5</b> | <b>1.7</b> | <b>1.0</b>      | <b>2.0</b> | <b>0.8</b> | <b>1.3</b>          | <b>1.6</b> | <b>1.2</b> | <b>2.0</b>      | <b>2.2</b> | <b>1.9</b> |
| 15-19                     | 5.3           | 6.8        | 4.8        | 10.5       | 5.4            | 6.1        | 5.1        | 5.0             | 7.7        | 4.6        | 4.9                 | 6.3        | 4.7        | 4.6             | 2.3        | 5.1        |
| 20-24                     | 4.8           | 6.2        | 4.4        | 5.1        | 5.2            | 4.8        | 5.4        | 2.3             | 6.6        | 1.4        | 4.7                 | 5.7        | 4.5        | 7.3             | 10.6       | 6.4        |
| 25-29                     | 2.0           | 2.7        | 1.8        | 2.5        | 3.4            | 2.7        | 3.8        | 1.4             | 3.4        | 0.9        | 1.2                 | 2.9        | 0.8        | 2.3             | 2.5        | 2.2        |
| 30-34                     | 1.1           | 1.2        | 1.1        | 1.3        | 1.2            | 1.0        | 1.2        | 0.9             | 1.3        | 0.7        | 1.1                 | 0.8        | 1.2        | 1.3             | 1.7        | 1.2        |
| 35-39                     | 0.6           | 0.8        | 0.4        | 1.0        | 0.6            | 0.7        | 0.5        | 0.2             | 1.0        | -          | 0.4                 | 0.8        | 0.3        | 1.0             | 0.5        | 1.2        |
| 40-49                     | 0.5           | 0.6        | 0.5        | 0.4        | 0.5            | 0.5        | 0.4        | 0.9             | 1.3        | 0.8        | 0.5                 | 0.8        | 0.4        | 0.4             | 0.7        | 0.3        |
| 50-59                     | 0.5           | 0.6        | 0.5        | 0.4        | 0.6            | 0.5        | 0.6        | 0.5             | 1.0        | 0.4        | 0.4                 | 0.5        | 0.4        | 0.7             | 0.9        | 0.7        |
| 60 and over               | 0.2           | 0.2        | 0.2        | -          | 0.2            | 0.4        | 0.2        | 0.1             | 0.1        | 0.1        | 0.2                 | 0.2        | 0.2        | 0.3             | -          | 0.3        |
| <b>Female</b>             | <b>1.2</b>    | <b>1.4</b> | <b>1.2</b> | <b>1.4</b> | <b>1.4</b>     | <b>1.3</b> | <b>1.4</b> | <b>1.0</b>      | <b>1.3</b> | <b>0.9</b> | <b>1.0</b>          | <b>1.2</b> | <b>0.9</b> | <b>1.9</b>      | <b>1.9</b> | <b>1.9</b> |
| 15-19                     | 6.4           | 6.3        | 6.4        | 6.9        | 6.5            | 5.9        | 6.8        | 3.9             | 5.1        | 3.7        | 5.2                 | 5.5        | 5.1        | 11.5            | 7.8        | 12.7       |
| 20-24                     | 4.4           | 5.0        | 4.1        | 4.6        | 4.9            | 4.1        | 5.3        | 3.5             | 5.9        | 3.0        | 3.5                 | 4.2        | 3.3        | 6.6             | 8.8        | 5.9        |
| 25-29                     | 1.6           | 2.3        | 1.1        | 2.7        | 2.0            | 1.6        | 2.2        | 1.6             | 3.5        | 1.0        | 0.7                 | 1.9        | 0.4        | 1.5             | 2.1        | 1.3        |
| 30-34                     | 1.0           | 0.9        | 1.0        | 1.0        | 1.0            | 1.0        | 0.9        | 0.3             | 0.8        | 0.1        | 1.1                 | 0.8        | 1.2        | 1.7             | 0.6        | 2.1        |
| 35-39                     | 1.0           | 1.3        | 0.8        | 1.5        | 1.1            | 1.9        | 0.7        | 1.0             | 0.1        | 1.3        | 0.5                 | 0.4        | 0.5        | 1.4             | 1.3        | 1.4        |
| 40-49                     | 0.4           | 0.4        | 0.4        | 0.2        | 0.4            | 0.4        | 0.5        | 0.5             | 0.6        | 0.5        | 0.3                 | 0.5        | 0.3        | 0.4             | 0.7        | 0.3        |
| 50-59                     | 0.4           | 0.4        | 0.4        | 0.5        | 0.3            | 0.0        | 0.4        | 0.4             | 0.5        | 0.4        | 0.4                 | 0.6        | 0.4        | 0.7             | 0.3        | 0.8        |
| 60 and over               | 0.2           | 0.2        | 0.2        | -          | 0.4            | 0.2        | 0.5        | 0.4             | 0.1        | 0.5        | 0.1                 | 0.5        | -          | 0.1             | -          | 0.1        |



Considered unemployment rate by sex, it was found that, unemployment rate of male was higher than female (1.4 per cent and 1.2 per cent respectively). The unemployment rate in municipal and higher than non municipal area (1.5 per cent and 1.3 per cent respectively). If the regions were taken into account, the rate of unemployment in the South show highest percentage with 1.9 per cent, Followed Central (1.5 per cent), Bangkok (1.4 per cent), Northeast (1.1 per cent) and North 1.0 per cent

Considering on levels of educational attainment of the unemployed person (Table L), it was found that the unemployment rate of persons attained lower secondary level,

upper secondary level (vocational) and higher level (academic/technical) were rather high.

FIGURE 6 UNEMPLOYMENT RATES BY LEVEL OF EDUCATIONAL ATTAINMENT

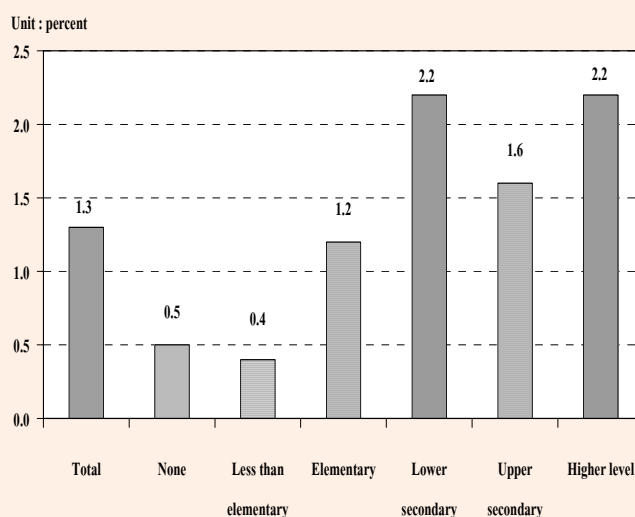


TABLE L UNEMPLOYMENT RATES BY LEVEL OF EDUCATIONAL ATTAINMENT, SEX AND AREA

(Percentage)

| Area and sex    | Level of educational attainment |      |                      |            |                 |                       |            |                  |              |                            |                    |                  |
|-----------------|---------------------------------|------|----------------------|------------|-----------------|-----------------------|------------|------------------|--------------|----------------------------|--------------------|------------------|
|                 | Total                           | None | Less than elementary | Elementary | Lower secondary | Upper secondary level |            |                  | Higher level |                            | Others and unknown |                  |
|                 |                                 |      |                      |            |                 | General/academic      | Vocational | Teacher training | Academic     | Higher technical education |                    | Teacher training |
| <b>Total</b>    | 1.3                             | 0.5  | 0.4                  | 1.2        | 2.2             | 1.6                   | 2.7        | -                | 2.3          | 2.7                        | 0.9                | -                |
| Male            | 1.4                             | 0.6  | 0.5                  | 1.3        | 2.3             | 1.7                   | 2.7        | -                | 1.9          | 3.1                        | 1.6                | -                |
| Female          | 1.2                             | 0.4  | 0.4                  | 1.0        | 2.2             | 1.5                   | 2.7        | -                | 2.5          | 2.1                        | 0.5                | -                |
| <b>M.A.</b>     | 1.5                             | 0.4  | 0.4                  | 1.2        | 2.2             | 1.5                   | 2.5        | -                | 2.0          | 2.0                        | 1.5                | -                |
| Male            | 1.6                             | 0.7  | 0.5                  | 1.3        | 2.2             | 1.6                   | 2.7        | -                | 1.9          | 2.5                        | 2.5                | -                |
| Female          | 1.4                             | 0.2  | 0.4                  | 1.0        | 2.2             | 1.4                   | 2.3        | -                | 2.1          | 1.5                        | 1.0                | -                |
| <b>Non-M.A.</b> | 1.3                             | 0.5  | 0.5                  | 1.2        | 2.3             | 1.7                   | 2.8        | -                | 2.8          | 3.2                        | 0.4                | -                |
| Male            | 1.3                             | 0.6  | 0.5                  | 1.3        | 2.3             | 1.7                   | 2.7        | -                | 1.9          | 3.7                        | 1.0                | -                |
| Female          | 1.2                             | 0.4  | 0.4                  | 1.0        | 2.2             | 1.6                   | 3.0        | -                | 3.5          | 2.6                        | -                  | -                |

1/ Including short course vocational

## 5. Characteristics of the unemployed labor force

Table M illustrates that the unemployed persons were largely males, 57.9 per cent whereas the corresponding percentage for females was 42.1 per cent. The percentage of unemployed male

were about 56.9 and 43.1 per cent of the total unemployed in the municipal area and non-municipal area respectively which was higher than the female about 58.4 per cent and 41.6 per cent.

**TABLE M NUMBER AND PERCENTAGE OF UNEMPLOYED PERSONS BY LEVEL OF EDUCATIONAL ATTAINMENT, SEX AND AREA**

| Area and sex               | Level of educational attainment |            |                      |              |                 |                       |             |                  |              |                            |                    |                  |
|----------------------------|---------------------------------|------------|----------------------|--------------|-----------------|-----------------------|-------------|------------------|--------------|----------------------------|--------------------|------------------|
|                            | Total                           | None       | Less than elementary | Elementary   | Lower secondary | Upper secondary level |             |                  | Higher level |                            | Others and unknown |                  |
|                            |                                 |            |                      |              |                 | General/academic      | Vocational  | Teacher training | Academic     | Higher technical education |                    | Teacher training |
| Number ('000)              |                                 |            |                      |              |                 |                       |             |                  |              |                            |                    |                  |
| <b>Total</b>               | <b>506.9</b>                    | <b>5.6</b> | <b>51.9</b>          | <b>101.8</b> | <b>130.1</b>    | <b>58.6</b>           | <b>32.8</b> | -                | <b>72.1</b>  | <b>46.0</b>                | <b>7.0</b>         | -                |
| Male                       | 293.5                           | 3.1        | 27.6                 | 63.3         | 81.4            | 35.3                  | 20.5        | -                | 27.7         | 29.4                       | 4.8                | -                |
| Female                     | 213.4                           | 2.5        | 24.2                 | 38.5         | 48.7            | 23.3                  | 12.2        | -                | 44.4         | 16.6                       | 2.3                | -                |
| <b>Municipal areas</b>     | <b>171.6</b>                    | <b>1.0</b> | <b>10.0</b>          | <b>22.9</b>  | <b>38.9</b>     | <b>19.5</b>           | <b>14.9</b> | -                | <b>42.0</b>  | <b>16.2</b>                | <b>5.2</b>         | -                |
| Male                       | 97.6                            | 0.6        | 5.5                  | 14.3         | 23.1            | 11.8                  | 9.5         | -                | 18.8         | 10.5                       | 2.9                | -                |
| Female                     | 74.1                            | 0.4        | 4.6                  | 8.6          | 15.8            | 7.7                   | 5.3         | -                | 23.2         | 5.6                        | 2.3                | -                |
| <b>Non-municipal areas</b> | <b>335.2</b>                    | <b>4.6</b> | <b>41.8</b>          | <b>78.9</b>  | <b>91.2</b>     | <b>39.1</b>           | <b>17.9</b> | -                | <b>30.1</b>  | <b>29.8</b>                | <b>1.8</b>         | -                |
| Male                       | 195.9                           | 2.4        | 22.2                 | 49.0         | 58.3            | 23.5                  | 11.0        | -                | 8.9          | 18.8                       | 1.8                | -                |
| Female                     | 139.3                           | 2.2        | 19.6                 | 29.9         | 32.9            | 15.6                  | 6.9         | -                | 21.2         | 11.0                       | -                  | -                |
| Percentage                 |                                 |            |                      |              |                 |                       |             |                  |              |                            |                    |                  |
| <b>Total</b>               | <b>100.0</b>                    | <b>1.1</b> | <b>10.2</b>          | <b>20.1</b>  | <b>25.7</b>     | <b>11.6</b>           | <b>6.5</b>  | -                | <b>14.2</b>  | <b>9.1</b>                 | <b>1.4</b>         | -                |
| Male                       | 100.0                           | 1.1        | 9.4                  | 21.6         | 27.7            | 12.0                  | 7.0         | -                | 9.4          | 10.0                       | 1.6                | -                |
| Female                     | 100.0                           | 1.2        | 11.4                 | 18.1         | 22.8            | 10.9                  | 5.7         | -                | 20.8         | 7.8                        | 1.1                | -                |
| <b>Municipal areas</b>     | <b>100.0</b>                    | <b>0.6</b> | <b>5.9</b>           | <b>13.3</b>  | <b>22.7</b>     | <b>11.3</b>           | <b>8.7</b>  | -                | <b>24.5</b>  | <b>9.4</b>                 | <b>3.0</b>         | -                |
| Male                       | 100.0                           | 0.7        | 5.6                  | 14.6         | 23.7            | 12.1                  | 9.8         | -                | 19.3         | 10.8                       | 3.0                | -                |
| Female                     | 100.0                           | 0.5        | 6.2                  | 11.6         | 21.3            | 10.4                  | 7.2         | -                | 31.4         | 7.6                        | 3.1                | -                |
| <b>Non-municipal areas</b> | <b>100.0</b>                    | <b>1.4</b> | <b>12.5</b>          | <b>23.5</b>  | <b>27.2</b>     | <b>11.7</b>           | <b>5.3</b>  | -                | <b>9.0</b>   | <b>8.9</b>                 | <b>0.5</b>         | -                |
| Male                       | 100.0                           | 1.3        | 11.3                 | 25.0         | 29.7            | 12.0                  | 5.6         | -                | 4.5          | 9.6                        | 0.9                | -                |
| Female                     | 100.0                           | 1.6        | 14.1                 | 21.5         | 23.6            | 11.2                  | 5.0         | -                | 15.2         | 7.9                        | -                  | -                |

1/ Including short course vocational

The majority of the unemployed persons show with 66.1 per cent were in the non-municipal areas because these areas constituted a larger part of the total labor force. About 66.7 per cent of the total unemployed males were in the non-municipal

areas while it was 65.3 per cent for females. However, the percentage of unemployed males and females were lower in busy season than the slack season.

The unemployed persons completed in some elementary education and none constituted the highest proportion (31.4 per cent) of the total unemployed, the secondary level (43.9 per cent) and higher level (24.7 per cent). In the non-municipal areas they accounted higher than the municipal areas for elementary and none (37.4 per cent compared with 19.8 per cent). While in the municipal areas, they accounted higher than non-municipal area for higher level (36.9 per cent compared with 18.4 per cent).

## 6. Hours worked

Data on hours worked and additional hours available for work have been obtained in respect of all the employed persons. In the case of persons who had job but did not work at all during

the survey week, the question on hours worked was interpreted as the zero hours per week. The data on hours worked included hours worked on all occupations, principal as well as others.

The data summarized in Table N show that about 35.1 per cent of the employed persons worked 50 hours or more per week. About 47.6 per cent of employed persons worked 35-49 hours per week. On the other word, about 82.7 per cent of employed person worked 35 hours or more per week and they might be classified as fully employed. About 15.8 per cent, for worked less than 35 hours per week and may be regarded as under-employed. For employed persons who did not work during the survey week (0 hours) but had regular job, which accounted only 1.5 per cent.

**TABLE N NUMBER AND PERCENTAGE OF EMPLOYED PERSONS BY HOURS WORKED PER WEEK**

| Hours work<br>per week | Employed persons         |              | Persons available for additional work |   |
|------------------------|--------------------------|--------------|---------------------------------------|---|
|                        | Number<br>(in thousands) | Percentage   | Number<br>(in thousands)              | Percentage<br>(as compared to employed) |
| <b>Total</b>           | <b>37,550.0</b>          | <b>100.0</b> | <b>878.7</b>                          | <b>2.3</b>                              |
| 0 hours                | 549.4                    | 1.5          | 92.5                                  | 16.8                                    |
| 1 - 9 hours            | 354.0                    | 0.9          | 40.6                                  | 11.5                                    |
| 10 - 19 hours          | 1,181.7                  | 3.2          | 120.2                                 | 10.2                                    |
| 20 - 29 hours          | 2,708.7                  | 7.2          | 203.4                                 | 7.5                                     |
| 30 - 34 hours          | 1,676.3                  | 4.5          | 97.9                                  | 5.8                                     |
| 35 - 39 hours          | 3,836.4                  | 10.2         | 82.8                                  | 2.2                                     |
| 40 - 49 hours          | 14,050.3                 | 37.4         | 177.0                                 | 1.3                                     |
| 50 hours and over      | 13,193.2                 | 35.1         | 64.3                                  | 0.5                                     |

The percentage of employed persons who were available for additional work, which is also an indicator for under-employment, accounted for about 2.3 per cent. Of the employed persons who worked less than 35 hours per week, 8.6 per cent desired and were available for additional work. The details of hours worked by occupation, industry and work status are illustrated in the Statistical Tables ( Table 8-10 ).

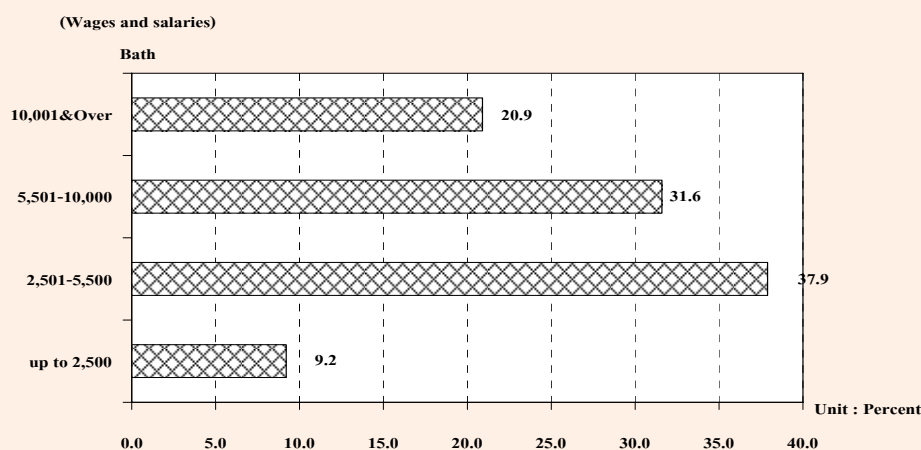
## 7. Wages and salaries

Data on wages and salaries have been collected in respect of all employees in accordance with the system applicable to each case and converted into the equivalent monthly wages and salaries. The data have been tabulated by industry, sex and area separately for government and private employees (see Table 15 and 16 in the statistical tables). In this chapter, data on the number of male and female employees by wage level or salary (not including supplementary earnings) and area are presented in Table O.

On the whole, about 37.9 per cent of 16.1 million employees had monthly wage or salary of Baht 2,501-5,500, around 31.6 per cent had monthly wage or salary of Baht 5,501-10,000, about 20.9 percent had over Baht 10,000 per month and about 9.2 per cent received less than Baht 2,500 per month.

The majority of employees in the municipal areas had higher level of wage or salary than their counterpart in the other area. For instance, only about 27.5 per cent of employees in the municipal areas received monthly wage or salary of below Baht 5,501 whereas the corresponding figure in the non-municipal areas was 60.3 per cent. Around 71.8 per cent of employees in the municipal areas earned more than Baht 5,500 compared with 39.4 per cent in the non-municipal areas. Moreover, about 33.4 per cent of employees in the municipal areas earned more than Baht 10,000 per month while the percentages in the non-municipal areas was only 12.4 per cent.

FIGURE 7 PERCENTAGE OF EMPLOYEES BY WAGE / SALARY



**TABLE O NUMBER AND PERCENTAGE OF EMPLOYEES BY WAGE/SALARY, SEX AND AREA**

| Monthly wage/<br>Salary level (Baht) | Whole kingdom   |                      |                   | Municipal areas |                      |                   | Non- municipal areas |                      |                   |
|--------------------------------------|-----------------|----------------------|-------------------|-----------------|----------------------|-------------------|----------------------|----------------------|-------------------|
|                                      | Total           | Government<br>sector | Private<br>sector | Total           | Government<br>sector | Private<br>sector | Total                | Government<br>sector | Private<br>sector |
| Number ('000)                        |                 |                      |                   |                 |                      |                   |                      |                      |                   |
| <b>Total</b>                         | <b>16,148.4</b> | <b>3,202.0</b>       | <b>12,946.4</b>   | <b>6,513.0</b>  | <b>1,490.2</b>       | <b>5,022.8</b>    | <b>9,635.4</b>       | <b>1,711.8</b>       | <b>7,923.6</b>    |
| Up to 2,500                          | 1,489.5         | 61.8                 | 1,427.7           | 195.2           | 7.5                  | 187.7             | 1,294.3              | 54.3                 | 1,240.0           |
| 2,501-5,500                          | 6,118.4         | 478.5                | 5,639.9           | 1,595.8         | 109.9                | 1,486.0           | 4,522.6              | 368.7                | 4,153.9           |
| 5,501-10,000                         | 5,106.0         | 955.2                | 4,150.8           | 2,503.6         | 412.3                | 2,091.4           | 2,602.4              | 542.9                | 2,059.5           |
| 10,001 & Over                        | 3,369.2         | 1,690.2              | 1,679.0           | 2,176.1         | 952.5                | 1,223.6           | 1,193.1              | 737.7                | 455.4             |
| Unknown                              | 65.3            | 16.3                 | 49.0              | 42.3            | 8.1                  | 34.2              | 23.1                 | 8.2                  | 14.8              |
| <b>Male</b>                          | <b>8,971.7</b>  | <b>1,732.0</b>       | <b>7,239.7</b>    | <b>3,441.7</b>  | <b>774.2</b>         | <b>2,667.5</b>    | <b>5,530.0</b>       | <b>957.7</b>         | <b>4,572.3</b>    |
| Up to 2,500                          | 724.8           | 40.8                 | 684.0             | 90.3            | 4.6                  | 85.7              | 634.5                | 36.2                 | 598.3             |
| 2,501-5,500                          | 3,365.6         | 297.4                | 3,068.2           | 779.1           | 61.6                 | 717.5             | 2,586.6              | 235.8                | 2,350.8           |
| 5,501-10,000                         | 2,981.4         | 483.7                | 2,497.7           | 1,380.6         | 212.6                | 1,168.0           | 1,600.8              | 271.1                | 1,329.7           |
| 10,001 & Over                        | 1,866.2         | 902.6                | 963.6             | 1,169.8         | 492.8                | 676.9             | 696.4                | 409.8                | 286.6             |
| Unknown                              | 33.7            | 7.4                  | 26.3              | 22.0            | 2.6                  | 19.4              | 11.7                 | 4.8                  | 6.9               |
| <b>Female</b>                        | <b>7,176.7</b>  | <b>1,470.1</b>       | <b>5,706.7</b>    | <b>3,071.3</b>  | <b>716.0</b>         | <b>2,355.4</b>    | <b>4,105.4</b>       | <b>754.1</b>         | <b>3,351.3</b>    |
| Up to 2,500                          | 764.7           | 21.0                 | 743.7             | 104.9           | 2.9                  | 102.0             | 659.9                | 18.1                 | 641.8             |
| 2,501-5,500                          | 2,752.8         | 181.1                | 2,571.7           | 816.8           | 48.3                 | 768.5             | 1,936.0              | 132.8                | 1,803.2           |
| 5,501-10,000                         | 2,124.7         | 471.5                | 1,653.2           | 1,123.1         | 199.7                | 923.4             | 1,001.6              | 271.8                | 729.8             |
| 10,001 & Over                        | 1,503.0         | 787.6                | 715.4             | 1,006.3         | 459.7                | 546.7             | 496.6                | 327.9                | 168.7             |
| Unknown                              | 31.6            | 8.9                  | 22.7              | 20.3            | 5.5                  | 14.8              | 11.3                 | 3.4                  | 7.9               |
| Percentage                           |                 |                      |                   |                 |                      |                   |                      |                      |                   |
| <b>Total</b>                         | <b>100.0</b>    | <b>100.0</b>         | <b>100.0</b>      | <b>100.0</b>    | <b>100.0</b>         | <b>100.0</b>      | <b>100.0</b>         | <b>100.0</b>         | <b>100.0</b>      |
| Up to 2,500                          | 9.2             | 1.9                  | 11.0              | 3.0             | 0.5                  | 3.7               | 13.4                 | 3.2                  | 15.7              |
| 2,501-5,500                          | 37.9            | 14.9                 | 43.6              | 24.5            | 7.4                  | 29.6              | 46.9                 | 21.5                 | 52.4              |
| 5,501-10,000                         | 31.6            | 29.8                 | 32.1              | 38.4            | 27.7                 | 41.6              | 27.0                 | 31.7                 | 26.0              |
| 10,001 & Over                        | 20.9            | 52.8                 | 13.0              | 33.4            | 63.9                 | 24.4              | 12.4                 | 43.1                 | 5.8               |
| Unknown                              | 0.4             | 0.5                  | 0.4               | 0.7             | 0.5                  | 0.7               | 0.2                  | 0.5                  | 0.2               |
| <b>Male</b>                          | <b>100.0</b>    | <b>100.0</b>         | <b>100.0</b>      | <b>100.0</b>    | <b>100.0</b>         | <b>100.0</b>      | <b>100.0</b>         | <b>100.0</b>         | <b>100.0</b>      |
| Up to 2,500                          | 8.1             | 2.4                  | 9.5               | 2.6             | 0.6                  | 3.2               | 11.5                 | 3.8                  | 13.1              |
| 2,501-5,500                          | 37.5            | 17.2                 | 42.4              | 22.6            | 8.0                  | 26.9              | 46.8                 | 24.6                 | 51.4              |
| 5,501-10,000                         | 33.2            | 27.9                 | 34.5              | 40.1            | 27.5                 | 43.8              | 29.0                 | 28.3                 | 29.1              |
| 10,001 & Over                        | 20.8            | 52.1                 | 13.3              | 34.0            | 63.7                 | 25.4              | 12.6                 | 42.8                 | 6.3               |
| Unknown                              | 0.4             | 0.4                  | 0.4               | 0.6             | 0.3                  | 0.7               | 0.2                  | 0.5                  | 0.2               |
| <b>Female</b>                        | <b>100.0</b>    | <b>100.0</b>         | <b>100.0</b>      | <b>100.0</b>    | <b>100.0</b>         | <b>100.0</b>      | <b>100.0</b>         | <b>100.0</b>         | <b>100.0</b>      |
| Up to 2,500                          | 10.7            | 1.4                  | 13.0              | 3.4             | 0.4                  | 4.3               | 16.1                 | 2.4                  | 19.2              |
| 2,501-5,500                          | 38.4            | 12.3                 | 45.1              | 26.6            | 6.8                  | 32.6              | 47.2                 | 17.6                 | 53.8              |
| 5,501-10,000                         | 29.6            | 32.1                 | 29.0              | 36.6            | 27.9                 | 39.2              | 24.4                 | 36.1                 | 21.8              |
| 10,001 & Over                        | 20.9            | 53.6                 | 12.5              | 32.8            | 64.2                 | 23.2              | 12.1                 | 43.5                 | 5.0               |
| Unknown                              | 0.4             | 0.6                  | 0.4               | 0.7             | 0.8                  | 0.6               | 0.3                  | 0.5                  | 0.2               |

It was observed that, on the whole, government employees got higher level of monthly wage or salary than the private ones. This partly because, in this survey, the private employee also included those daily wage employees and laborers who usually earn rather low income. About 54.6 per cent of the private employees earned less than Baht 5,501 a month as compared with 16.8 per cent of the government employees. On the other hand, the government employees who received over Baht 5,500 per month accounted for about 82.6 per cent of the

total government employees while the private employees only accounted for 45.1 per cent.

## 8. Supplementary benefits

Apart from data on basic wages and salaries, information was also collected on receipt of supplementary benefits in cash such as bonuses and overtime payments, and in kind such as food, clothing, housing, and others; the amount received have not however been ascertained. The data on number of employees receiving benefits are summarized in Table P.

**TABLE P NUMBER AND PERCENTAGE OF PRIVATE EMPLOYEES AND GOVERNMENT EMPLOYEES BY RECEIVING SUPPLEMENTARY BENEFITS, AREA AND SEX**

| Sector, area and sex     | Total employees | <i>1/</i>  |                          |                          |                          |                      |                        |                        |
|--------------------------|-----------------|--|--------------------------|--------------------------|--------------------------|----------------------|------------------------|------------------------|
|                          |                 | Number of employees receiving supplementary benefits |                          |                          |                          |                      |                        |                        |
|                          |                 | Bonus  | Overtime                 | Other Cash               | Food                     | Clothing             | Housing                | Others                 |
| <b>Total</b>             | 5,239.7         | 83.1<br>(1.6)  | 1,621.9<br>(31.0)        | 2,665.8<br>(50.9)        | 1,520.8<br>(29.0)        | 113.8<br>(2.2)       | 758.0<br>(14.5)        | 576.6<br>(11.0)        |
| Male                     | 2,715.4         | 43.5<br>(1.6)  | 779.3<br>(28.7)          | 1,372.5<br>(50.5)        | 728.9<br>(26.8)          | 63.3<br>(2.3)        | 477.4<br>(17.6)        | 268.8<br>(9.9)         |
| Female                   | 2,524.4         | 39.7<br>(1.6)  | 842.7<br>(33.4)          | 1,293.3<br>(51.2)        | 791.9<br>(31.4)          | 50.5<br>(2.0)        | 280.6<br>(11.1)        | 307.8<br>(12.2)        |
| <b>Private sector</b>    | <b>3,934.2</b>  | <b>45.2</b><br>(1.1)                                 | <b>1,407.7</b><br>(35.8) | <b>1,636.5</b><br>(41.6) | <b>1,493.1</b><br>(38.0) | <b>99.7</b><br>(2.5) | <b>548.5</b><br>(13.9) | <b>549.5</b><br>(14.0) |
| Male                     | 2,023.0         | 23.3<br>(1.2)  | 689.1<br>(34.1)          | 826.4<br>(40.9)          | 718.4<br>(35.5)          | 53.0<br>(2.6)        | 339.3<br>(16.8)        | 253.3<br>(12.5)        |
| Female                   | 1,911.2         | 21.8<br>(1.1)  | 718.6<br>(37.6)          | 810.1<br>(42.4)          | 774.7<br>(40.5)          | 46.7<br>(2.4)        | 209.3<br>(11.0)        | 296.2<br>(15.5)        |
| <b>Government sector</b> | <b>1,305.5</b>  | <b>38.0</b><br>(2.9)                                 | <b>214.3</b><br>(16.4)   | <b>1,029.3</b><br>(78.8) | <b>27.7</b><br>(2.1)     | <b>14.1</b><br>(1.1) | <b>209.4</b><br>(16.0) | <b>27.2</b><br>(2.1)   |
| Male                     | 692.3           | 20.2<br>(2.9)  | 90.1<br>(13.0)           | 546.1<br>(78.9)          | 10.5<br>(1.5)            | 10.3<br>(1.5)        | 138.2<br>(20.0)        | 15.5<br>(2.2)          |
| Female                   | 613.2           | 17.8<br>(2.9)  | 124.1<br>(20.2)          | 483.2<br>(78.8)          | 17.2<br>(2.8)            | 3.8<br>(0.6)         | 71.3<br>(11.6)         | 11.6<br>(1.9)          |

**TABLE P NUMBER AND PERCENTAGE OF PRIVATE EMPLOYEES AND GOVERNMENT EMPLOYEES BY RECEIVING SUPPLEMENTARY BENEFITS, AREA AND SEX (Contd.)**

| (In thousands)             |                 |  |               |               |               |              |               |               |
|----------------------------|-----------------|--|---------------|---------------|---------------|--------------|---------------|---------------|
| Sector, area and sex       | Total employees | Number of employees receiving supplementary benefits |               |               |               |              |               |               |
|                            |                 | Bonus  | Overtime      | Other cash    | Food          | Clothing     | Housing       | Others        |
| <b>Private sector</b>      |                 |  |               |               |               |              |               |               |
| <b>Municipal areas</b>     | <b>1,665.7</b>  | <b>27.8</b>  | <b>576.2</b>  | <b>708.8</b>  | <b>618.5</b>  | <b>49.6</b>  | <b>280.0</b>  | <b>182.3</b>  |
|                            |                 | <b>(1.7)</b>   | <b>(34.6)</b> | <b>(42.5)</b> | <b>(37.1)</b> | <b>(3.0)</b> | <b>(16.8)</b> | <b>(10.9)</b> |
| Male                       | 844.2           | 12.6   | 291.6         | 371.5         | 273.3         | 31.0         | 142.0         | 83.0          |
|                            |                 | (1.5)  | (34.5)        | (44.0)        | (32.4)        | (3.7)        | (16.8)        | (9.8)         |
| Female                     | 821.5           | 15.2   | 284.7         | 337.3         | 345.2         | 18.7         | 138.0         | 99.3          |
|                            |                 | (1.8)  | (34.7)        | (41.1)        | (42.0)        | (2.3)        | (16.8)        | (12.1)        |
| <b>Non-municipal areas</b> | <b>2,268.5</b>  | <b>17.4</b>  | <b>831.4</b>  | <b>927.8</b>  | <b>874.6</b>  | <b>50.0</b>  | <b>268.5</b>  | <b>367.2</b>  |
|                            |                 | <b>(0.8)</b>   | <b>(36.7)</b> | <b>(40.9)</b> | <b>(38.6)</b> | <b>(2.2)</b> | <b>(11.8)</b> | <b>(16.2)</b> |
| Male                       | 1,178.8         | 10.7   | 397.6         | 455.0         | 445.1         | 22.0         | 197.2         | 170.3         |
|                            |                 | (0.9)  | (33.7)        | (38.6)        | (37.8)        | (1.9)        | (16.7)        | (14.4)        |
| Female                     | 1,089.7         | 6.7  | 433.9         | 472.8         | 429.5         | 28.0         | 71.2          | 196.9         |
|                            |                 | (0.6)  | (39.8)        | (43.4)        | (39.4)        | (2.6)        | (6.5)         | (18.1)        |
| <b>Government sector</b>   |                 |  |               |               |               |              |               |               |
| <b>Municipal areas</b>     | <b>616.0</b>    | <b>17.3</b>  | <b>117.4</b>  | <b>461.5</b>  | <b>7.7</b>    | <b>8.6</b>   | <b>130.4</b>  | <b>16.1</b>   |
|                            |                 | <b>(2.8)</b>   | <b>(19.1)</b> | <b>(74.9)</b> | <b>(1.2)</b>  | <b>(1.4)</b> | <b>(21.2)</b> | <b>(2.6)</b>  |
| Male                       | 340.3           | 9.0  | 54.1          | 254.4         | 2.8           | 5.5          | 92.6          | 9.1           |
|                            |                 | (2.7)  | (15.9)        | (74.8)        | (0.8)         | (1.6)        | (27.2)        | (2.7)         |
| Female                     | 275.8           | 8.3  | 63.4          | 207.2         | 4.9           | 3.1          | 37.9          | 7.0           |
|                            |                 | (3.0)  | (23.0)        | (75.1)        | (1.8)         | (1.1)        | (13.7)        | (2.5)         |
| <b>Non-municipal areas</b> | <b>689.4</b>    | <b>20.7</b>  | <b>96.8</b>   | <b>567.8</b>  | <b>20.0</b>   | <b>5.5</b>   | <b>79.0</b>   | <b>11.0</b>   |
|                            |                 | <b>(3.0)</b>   | <b>(14.0)</b> | <b>(82.3)</b> | <b>(2.9)</b>  | <b>(0.8)</b> | <b>(11.5)</b> | <b>(1.6)</b>  |
| Male                       | 352.0           | 11.1   | 36.1          | 291.7         | 7.6           | 4.8          | 45.6          | 6.5           |
|                            |                 | (3.2)  | (10.2)        | (82.9)        | (2.2)         | (1.4)        | (13.0)        | (1.8)         |
| Female                     | 337.4           | 9.6  | 60.8          | 276.1         | 12.4          | 0.7          | 33.4          | 4.6           |
|                            |                 | (2.8)  | (18.0)        | (81.8)        | (3.7)         | (0.2)        | (9.9)         | (1.4)         |

1/ One employee can receive more than 1 type of supplementary benefits.

Certain types of supplementary benefits such as overtime, food supplies, clothing and other seem to be more common in the private sector than in the government sector. Other bonus cash and housing, however, seem to be more common in the government sector than in the private sector. The private employees in the municipal area received more supplementary benefits such as bonus, other-cash, clothing and housing than those in the non-municipal areas, for instance, about 1.7 per cent for bonus, 42.5 per cent for other cash 3.0 per cent for clothing and 16.8 per cent for housing. The private employees in non-municipal area received more supplementary

benefits such as, overtime and food supplies than those in the municipal area or about 36.7 per cent for overtime and 38.6 per cent for food supplies. The government employees in the municipal area received more supplementary benefits such as overtime, clothing and housing than those in the non-municipal area. For instance about 19.1, 1.4, and 21.2 per cent respectively. The government employees in the non-municipal area received more supplementary benefits, such as bonus, other cash and food supplies than those in the municipal area or about 3.0, 82.3 and 2.9 per cent respectively.