

Summary of the labor force survey in Thailand : October 2013

Table 1 Comparison of population aged 15 years and over by labor force status

Labor force status	2012			2013	
	Sep	Oct	Nov	Sep	Oct
	Unit : million				
Persons over 15 years	54.62	54.66	54.70	55.13	54.55
1. Total labor force	39.44	39.49	40.17	39.32	38.39
1.1 employed	39.15	39.21	39.97	39.00	38.02
1.2 unemployed	0.25	0.22	0.16	0.26	0.24
1.3 seasonally	0.04	0.06	0.04	0.06	0.13
2. Not in labor force	15.18	15.17	14.53	15.81	16.16

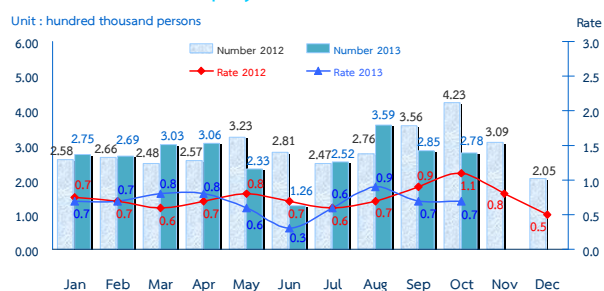
Table 2 Comparison of number of employed persons by industry

Industry	2012			2013	
	Sep	Oct	Nov	Sep	Oct
	Unit : Million				
Total	39.15	39.21	39.97	39.00	38.02
1. Agricultural	15.69	14.87	16.83	15.68	12.85
- Agriculture, forestry and fishing	15.69	14.87	16.83	15.68	12.85
2. Non-Agricultural	23.46	24.34	23.14	23.32	25.17
- Manufacturing	5.72	5.72	5.41	5.81	6.47
- Construction	2.50	2.56	2.20	2.44	2.36
- Wholesale and retail trade; repair of motor vehicles and motorcycles	5.65	6.13	6.12	5.75	6.28
- Transportation and storage	1.00	0.92	0.97	0.92	1.17
- Accommodation and food service activities	2.37	2.51	2.38	2.21	2.42
- Financial and insurance activities	0.37	0.46	0.38	0.43	0.51
- Real estate activities	0.11	0.14	0.11	0.14	0.17
- Public administration defence and compulsory social security	1.73	1.71	1.56	1.53	1.63
- Education	1.09	1.15	1.31	1.07	1.10
- Human health and social work activities	0.64	0.66	0.63	0.66	0.62
- Other service activities	0.66	0.67	0.54	0.69	0.61
- Others	1.62	1.71	1.53	1.67	1.83

The results of Labor Force Survey in October 2013 showed that there are population, aged 15 years and over, of about 54.55 million persons. Of these 38.39 million were in the labor force or available for work (38.02 million were employed, 0.24 million were unemployed and 0.13 million were seasonally inactive labor force), while 16.16 million were not in the labor force or not available for work, such as housewives, students or elderly.

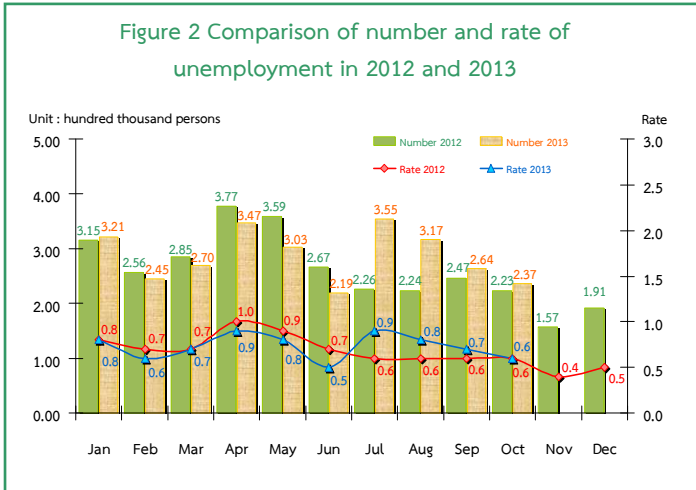
There were 38.02 million employed persons, which 12.85 and 25.17 million were in agriculture and non-agriculture sectors, respectively. Comparing with October in 2012, it was shown that the number of employed persons in agriculture sector decreased by 2.02 million but non-agriculture sector increased by 0.83 million. This increment was found in various industries e.g. 0.75 million in manufacturing, 0.25 million in transportation and storage, 0.15 million in wholesale and retail trade, repair of motor vehicles and motorcycles and 50 thousand in financial and insurance activities. However, a decrease in some other industries was found e.g., 0.20 million in construction, 90 thousand in accommodation and food service activities, 80 thousand in public administration defence and compulsory social security, 60 thousand in other service activities and 50 thousand in education and the rest shared in the other industries.

Figure 1 Comparison of number and rate of underemployment in 2012 and 2013

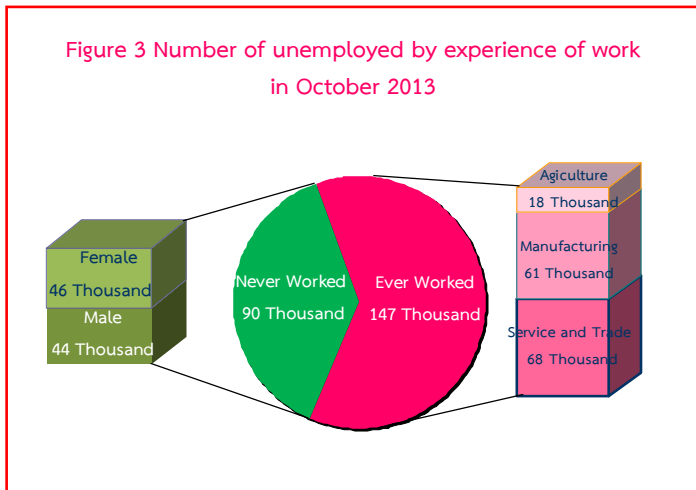


Remark : Underemployment worker is a worker who working less than 35 hours per week and available for additional work.

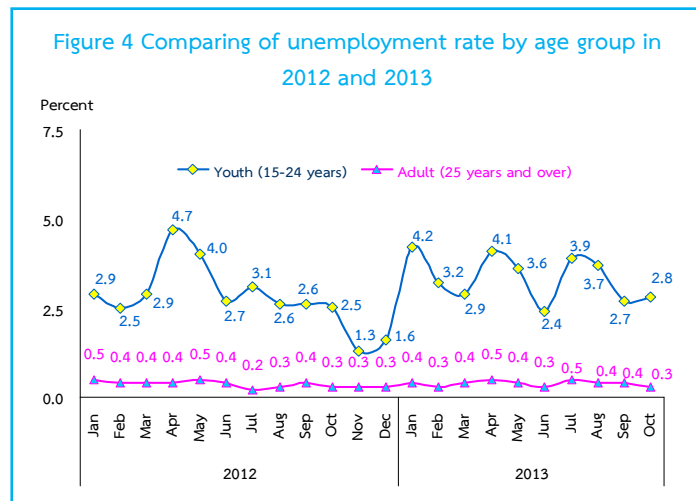
Considering the number of underemployed workers and available for additional work, there were 0.28 million or 0.7% of the total employed persons.



In October 2013, the total number of unemployed persons were 0.24 million or 0.6% of the total labor force and increased of 14 thousand (from 0.22 million to 0.24 million) comparing to the same period as in 2012. But, it showed a decrease of 27 thousand (from 0.26 million to 0.24 million) in September 2013.

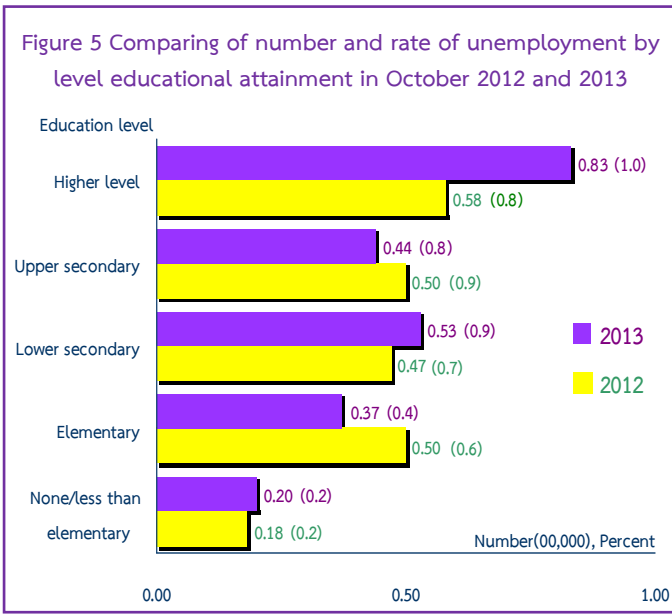


Out of 0.24 million, there were 90 thousand having never worked (44 thousand were male and 46 thousand were female) and 147 thousand had ever worked, among these, the number of unemployed persons who ever worked decreased by 14 thousand (from 0.16 million to 0.15 million), comparing to the same period as in 2012. It was found that 0.15 million distributed in 3 sectors i.e. 68 thousand in services and trade, 61 thousand in manufacturing and 18 thousand in agriculture.



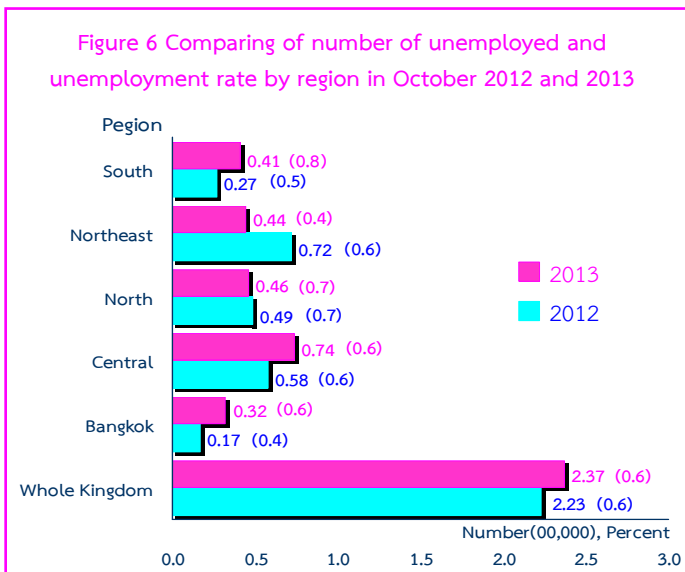
Regarding the unemployment rates by age groups, there were 2.8% in a youth group (aged 15-24 years) and 0.3% in adults group (age 25 years and over).

The unemployment rate in the youth group increased from 2.5% to 2.8% comparing to the same period as in 2012, and increased from 2.7% to 2.8% comparing to September in 2013.



For level of educational attainment of unemployed persons in October 2013, it was found that most of them had higher level (83 thousand or 1.0%), followed by those with lower secondary level (53 thousand or 0.9%), upper secondary level (44 thousand or 0.8%), primary level (37 thousand or 0.4%), and illiterate and less than primary level (20 thousand or 0.2%).

Comparing to the same period in 2012, the result showed that the number of unemployed persons with higher level increased of 25 thousand, lower secondary level of 6 thousand and illiterate and less than primary level of 2 thousand. However, those with primary level decreased of 13 thousand and upper secondary level of 6 thousand.



Concerning the unemployment rate by region, it was found that those in the South was the highest with 0.8%, followed by those the North (0.7%), in Bangkok and the Central (0.6%) and in the Northeast (0.4%).

Comparing to the same period as in 2012, the unemployment rate of the whole kingdom did not change. However, concerning by region, it changes in some regions such as, an increase in the South and Bangkok, a decrease in the Northeast, while the unemployment rate did not change in the Central and in the North.