

## Summary of the labor force survey in Thailand : August 2013

**Table 1 Comparison of population aged 15 years and over by labor force status**

Labor force status	2012			2013	
	Jul	Aug	Sep	Jul	Aug
	Unit : million				
Persons over 15 years	54.54	54.58	54.62	55.05	55.09
<b>1. Total labor force</b>	<b>40.10</b>	<b>39.80</b>	<b>39.44</b>	<b>39.75</b>	<b>39.31</b>
1.1 employed	39.85	39.54	39.15	39.36	38.95
1.2 unemployed	0.23	0.22	0.25	0.36	0.32
1.3 seasonally	0.02	0.04	0.04	0.03	0.04
<b>2. Not in labor force</b>	<b>14.44</b>	<b>14.78</b>	<b>15.18</b>	<b>15.30</b>	<b>15.78</b>

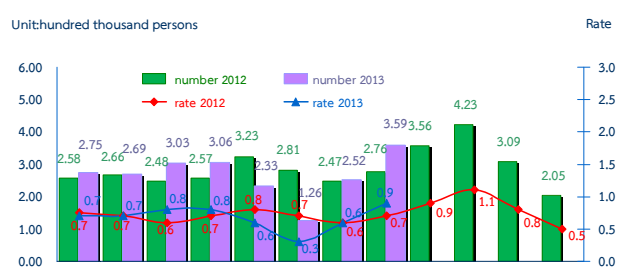
**Table 2 Comparison of number of employed persons by industry**

Industry	2012			2013	
	Jul	Aug	Sep	Jul	Aug
	Unit : Million				
Total	39.85	39.54	39.15	39.36	38.95
<b>1. Agricultural</b>	<b>16.87</b>	<b>16.46</b>	<b>15.69</b>	<b>16.24</b>	<b>16.22</b>
- Agriculture, forestry and fishing	16.87	16.46	15.69	16.24	16.22
<b>2. Non-Agricultural</b>	<b>22.98</b>	<b>23.08</b>	<b>23.46</b>	<b>23.12</b>	<b>22.73</b>
- Manufacturing	5.35	5.68	5.72	5.80	5.55
- Construction	2.15	2.30	2.50	2.29	2.08
- Wholesale and retail trade; repair of motor vehicles and motorcycles	5.80	5.76	5.65	5.76	5.59
- Transportation and storage	0.92	1.07	1.00	0.95	0.96
- Accommodation and food service activities	2.44	2.22	2.37	2.16	2.22
- Financial and insurance activities	0.42	0.37	0.37	0.47	0.41
- Real estate activities	0.17	0.13	0.11	0.17	0.13
- Public administration defence and compulsory social security	1.61	1.59	1.73	1.63	1.62
- Education	1.16	1.20	1.09	1.11	1.11
- Human health and social work activities	0.67	0.61	0.64	0.56	0.75
- Other service activities	0.63	0.59	0.66	0.58	0.57
- Others	1.66	1.56	1.62	1.64	1.74

The results of Labor Force Survey in August 2013 showed that there are population, aged 15 years and over, of about 55.09 million persons. Of these 39.31 million were in the labor force or available for work (38.95 million were employed, 0.32 million were unemployed and 0.04 million were seasonally inactive labor force), while 15.78 million were not in the labor force or not available for work, such as housewives, students or elderly.

There were 38.95 million employed persons, which 16.22 and 22.73 million were in agriculture and non-agriculture sectors, respectively. Comparing with August in 2012, it was shown that the number of employed persons in agriculture sector decreased by 0.24 million and non-agriculture sector decreased by 0.35 million. This decrement was found in various industries e.g. 0.22 million in construction, 0.17 million in wholesale and retail trade, repair of motor vehicles and motorcycles, 0.13 million in manufacturing, 0.11 million in transportation and storage and 90 thousand in education. However, a increase in some other industries was found e.g., 0.14 million in human health and social work activities and 40 thousand in financial and insurance activities and the rest shared in the other industries.

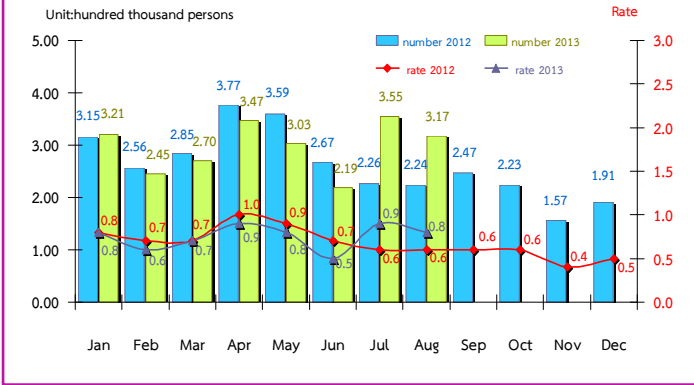
**Figure 1 Comparison of number and rate of underemployment in 2012 and 2013**



Remark : Underemployment worker is a worker who working less than 35 hours per week and available for additional work.

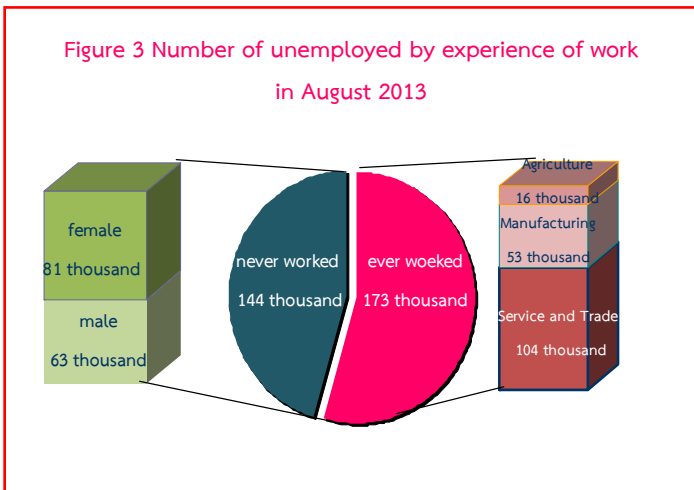
Considering the number of underemployed workers and available for additional work, there were 0.36 million or 0.9% of the total employed persons.

Figure 2 Comparison of number and rate of unemployment in 2012 and 2013



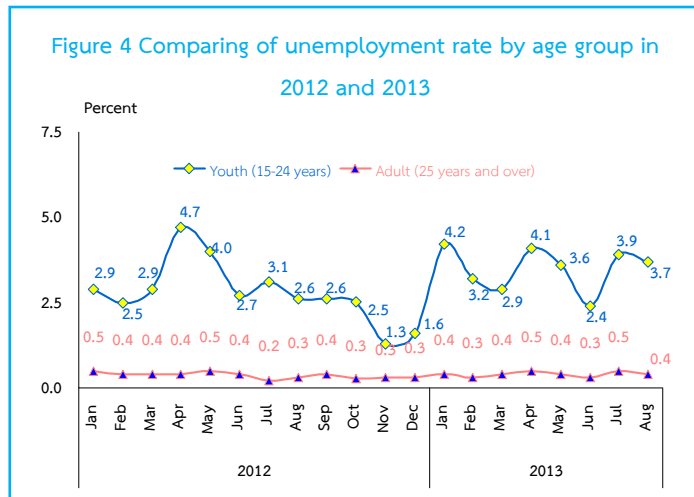
In August 2013, the total number of unemployed persons were 0.32 million or 0.8% of the total labor force and increased of 93 thousand (from 0.22 million to 0.32 million) comparing to the same period as in 2012. But, it showed a decrease of 38 thousand (from 0.36 million to 0.32 million) in July 2013.

Figure 3 Number of unemployed by experience of work in August 2013



Out of 0.32 million, there were 0.14 million having never worked (63 thousand were male and 81 thousand were female) and 0.17 million had ever, among these, the number of unemployed persons who ever worked increased by 77 thousand (from 0.10 million to 0.17 million), comparing to the same period as in 2012. It was found that 0.17 million distributed in 3 sectors i.e. 104 thousand in trade and services, 53 thousand in manufacturing and 16 thousand in agriculture.

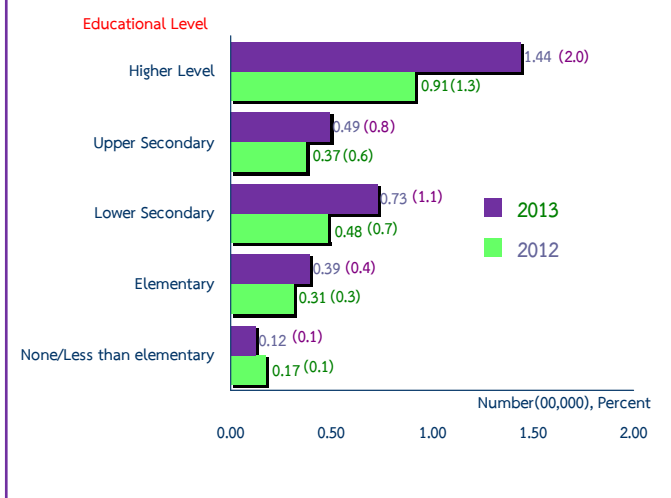
Figure 4 Comparing of unemployment rate by age group in 2012 and 2013



Regarding the unemployment rates by age groups, there were 3.7% in a youth group (aged 15-24 years) and 0.4% in adults group (age 25 years and over).

The unemployment rate in the youth group increased from 2.6% to 3.7% comparing to the same period as in 2012, but decreased from 3.9% to 3.7% comparing to July in 2013.

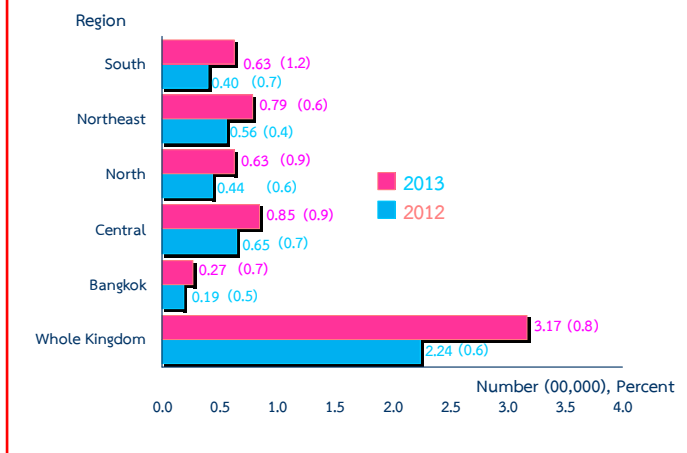
Figure 5 Comparing of number and rate of unemployment by level educational attainment in August 2012 and 2013



For level of educational attainment of unemployed persons in August 2013, it was found that most of them had higher level (0.14 million or 2.0%), followed by those with lower secondary level (73 thousand or 1.1%), upper secondary level (49 thousand or 0.8%), primary level (39 thousand or 0.4%), and illiterate and less than primary level (12 thousand or 0.1%).

Comparing to the same period in 2012, the result showed that the number of unemployed persons with higher level increased of 53 thousand, lower secondary level of 25 thousand, upper secondary level of 12 thousand and primary level of 8 thousand. However, those with illiterate and less than primary level decreased of 5 thousand.

Figure 6 Comparing of number of unemployed and unemployment rate by region in August 2012 and 2013



Concerning the unemployment rate by region, it was found that those in the South was the highest with 1.2%, followed by those in the Central and the North (0.9%), Bangkok (0.7%) and the Northeast (0.6%).

Comparing to the same period as in 2012, the unemployment rate of the whole kingdom increased. And, concerning by region, it increases in all regions.