

Summary of the labor force survey in Thailand : July 2013

Table 1 Comparison of population aged 15 years and over by labor force status

Labor force status	2012			2013	
	Jun	Jul	Aug	Jun	Jul
	Unit : million				
Persons over 15 years	54.50	54.54	54.58	55.01	55.05
1. Total labor force	39.89	40.10	39.80	40.19	39.75
1.1 employed	39.53	39.85	39.54	39.90	39.36
1.2 unemployed	0.27	0.23	0.22	0.21	0.36
1.3 seasonally	0.09	0.02	0.04	0.08	0.03
2. Not in labor force	14.61	14.44	14.78	14.82	15.30

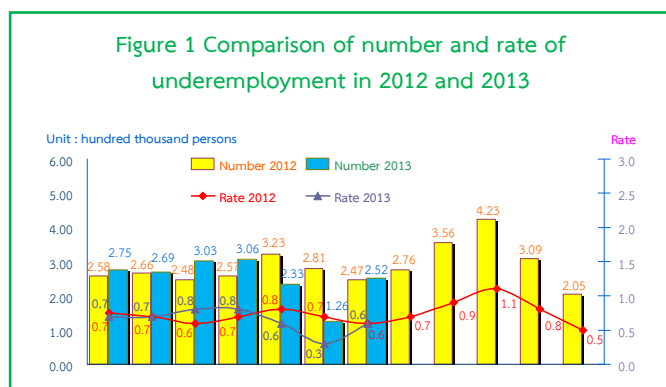
The results of Labor Force Survey in July 2013 showed that there are population, aged 15 years and over, of about 55.05 million persons. Of these 39.75 million were in the labor force or available for work (39.36 million were employed, 0.36 million were unemployed and 0.03 million were seasonally inactive labor force), while 15.30 million were not in the labor force or not available for work, such as housewives, students or elderly.

Table 2 Comparison of number of employed persons by industry

Industry	2012			2013	
	Jun	Jul	Aug	Jun	Jul
	Unit : Million				
Total	39.53	39.85	39.54	39.90	39.36
1. Agricultural	16.35	16.87	16.46	16.59	16.24
- Agriculture, forestry and fishing	16.35	16.87	16.46	16.59	16.24
2. Non-Agricultural	23.18	22.98	23.08	23.31	23.12
- Manufacturing	5.51	5.35	5.68	5.65	5.80
- Construction	2.36	2.15	2.30	2.32	2.29
- Wholesale and retail trade; repair of motor vehicles and motorcycles	5.83	5.80	5.76	5.74	5.76
- Transportation and storage	0.91	0.92	1.07	0.99	0.95
- Accommodation and food service activities	2.15	2.44	2.22	2.39	2.16
- Financial and insurance activities	0.36	0.42	0.37	0.46	0.47
- Real estate activities	0.17	0.17	0.13	0.13	0.17
- Public administration defence and compulsory social security	1.77	1.61	1.59	1.60	1.63
- Education	1.08	1.16	1.20	1.12	1.11
- Human health and social work activities	0.67	0.67	0.61	0.63	0.56
- Other service activities	0.72	0.63	0.59	0.66	0.58
- Others	1.65	1.66	1.56	1.62	1.64

There were 39.36 million employed persons, which 16.24 and 23.12 million were in agriculture and non-agriculture sectors, respectively. Comparing with July in 2012, it was shown that the number of employed persons in agriculture sector decreased by 0.63 million, but non-agriculture sector increased by 0.14 million. This increment was found in various industries e.g. 0.45 million in manufacturing, 0.14 million in construction, 50 thousand in financial and insurance activities. However, a decrease in some other industries was found e.g., 0.28 million in accommodation and food service activities, 0.11 million in human health and social work activities, 50 thousand in education and in other service activities (Health service activities, pets care service and laundry & dry cleaning service), 40 thousand in wholesale and retail trade, repair of motor vehicles and motorcycles and the rest shared in the other industries.

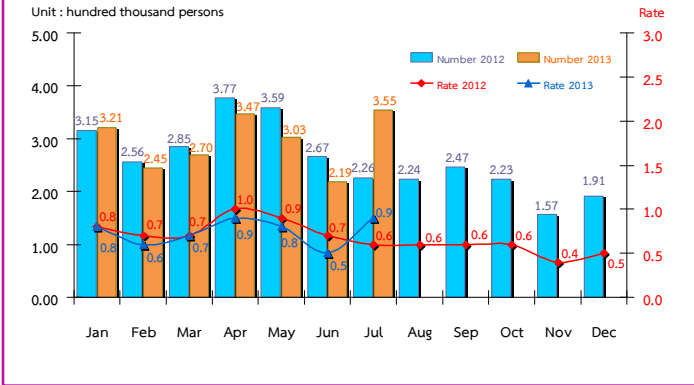
Figure 1 Comparison of number and rate of underemployment in 2012 and 2013



Remark : Underemployment worker is a worker who working less than 35 hours per week and available for additional work.

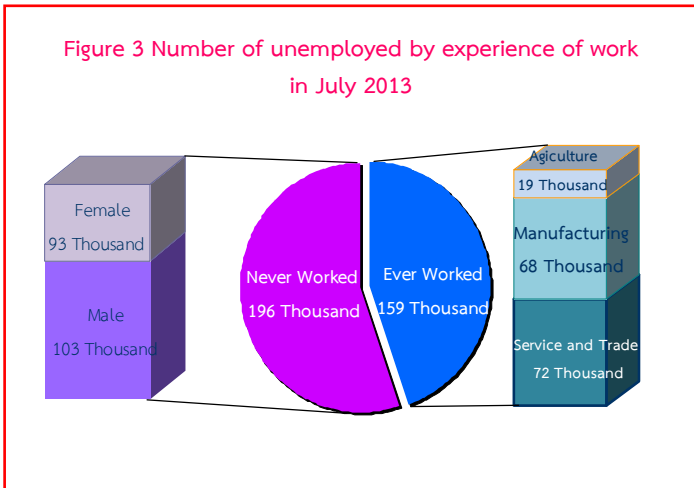
Considering the number of underemployed workers and available for additional work, there were 0.25 million or 0.6% of the total employed persons.

Figure 2 Comparison of number and rate of unemployment in 2012 and 2013



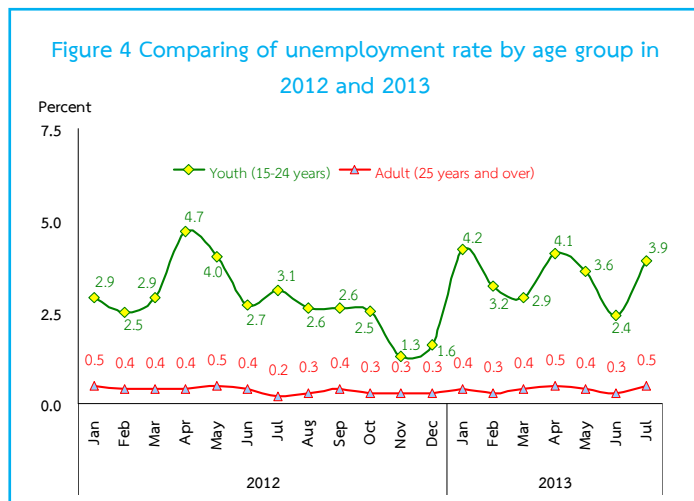
In July 2013, the total number of unemployed persons were 0.36 million or 0.9% of the total labor force and increased of 0.13 million (from 0.23 million to 0.36 million) comparing to the same period as in 2012. And, it showed an increase of 0.14 million (from 0.22 million to 0.36 million) in June 2013.

Figure 3 Number of unemployed by experience of work in July 2013



Out of 0.36 million, there were 0.20 million having never worked (0.10 million were male and 93 thousand were female) and 0.16 million had ever, among these, the number of unemployed persons who ever worked increased by 59 thousand (from 0.10 million to 0.16 million), comparing to the same period as in 2012. It was found that 0.16 million distributed in 3 sectors i.e. 72 thousand in trade and services, 68 thousand in manufacturing and 19 thousand in agriculture.

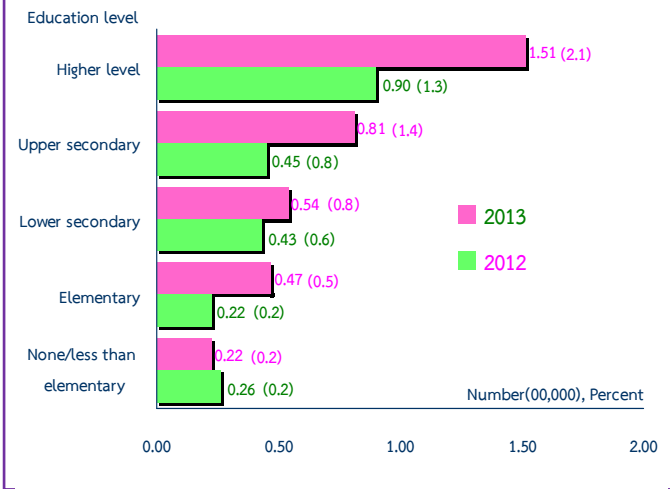
Figure 4 Comparing of unemployment rate by age group in 2012 and 2013



Regarding the unemployment rates by age groups, there were 3.9% in a youth group (aged 15-24 years) and 0.5% in adults group (age 25 years and over).

The unemployment rate in the youth group increased from 3.1% to 3.9% comparing to the same period as in 2012, and increased from 2.4% to 3.9% comparing to June in 2013.

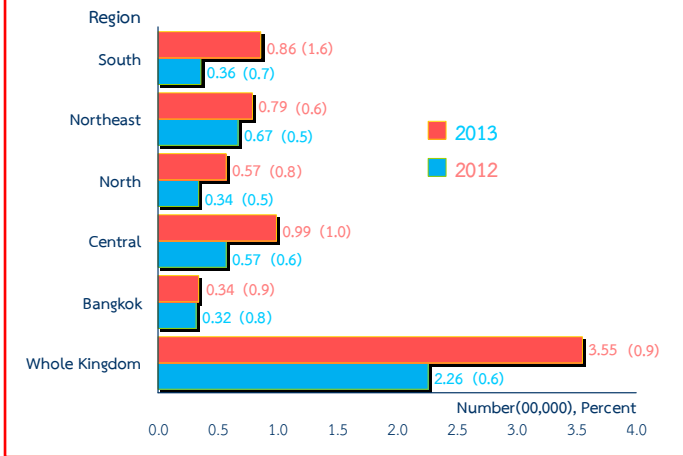
Figure 5 Comparing of number and rate of unemployment by level educational attainment in July 2012 and 2013



For level of educational attainment of unemployed persons in July 2013, it was found that most of them had higher level (0.15 million or 2.1%), followed by those with upper secondary level (81 thousand or 1.4%), lower secondary level (54 thousand or 0.8%), primary level (47 thousand or 0.5%), and illiterate and less than primary level (22 thousand or 0.2%).

Comparing to the same period in 2012, the result showed that the number of unemployed persons with higher level increase of 61 thousand, upper secondary level of 36 thousand, primary level of 25 thousand, and lower secondary of 11 thousand. However, those with illiterate and less than primary level decreased of 4 thousand.

Figure 6 Comparing of number of unemployed and unemployment rate by region in July 2012 and 2013



Concerning the unemployment rate by region, it was found that those in the South was the highest with 1.6%, followed by those in the Central (1.0%), Bangkok (0.9%), the North (0.8%) and the Northeast (0.6%).

Comparing to the same period as in 2012, the unemployment rate of the whole kingdom increased. And, concerning by region, it increases in all regions.

