

## Summary of the labor force survey in Thailand : May 2013

**Table 1 Comparison of population aged 15 years and over by labor force status**

*Unit : million*

Labor force status	2012			2013	
	Apr	May	Jun	Apr	May
Persons over 15 years	54.41	54.45	54.50	54.92	54.96
<b>1. Total labor force</b>	<b>38.91</b>	<b>39.01</b>	<b>39.89</b>	<b>38.79</b>	<b>39.49</b>
1.1 employed	38.14	38.27	39.53	38.02	38.85
1.2 unemployed	0.38	0.36	0.27	0.35	0.30
1.3 seasonally	0.39	0.38	0.09	0.42	0.34
<b>2. Not in labor force</b>	<b>15.50</b>	<b>15.44</b>	<b>14.61</b>	<b>16.13</b>	<b>15.47</b>

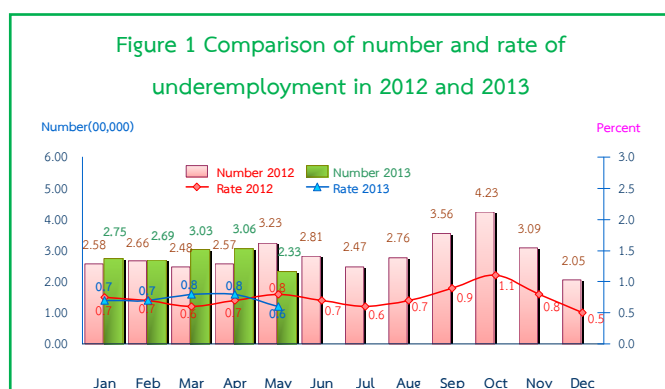
**Table 2 Comparison of number of employed persons by industry**

*Unit : Million*

Industry	2012			2013	
	Apr	May	Jun	Apr	May
<b>Total</b>	<b>38.14</b>	<b>38.27</b>	<b>39.53</b>	<b>38.02</b>	<b>38.85</b>
<b>1. Agricultural</b>	<b>13.57</b>	<b>14.39</b>	<b>16.35</b>	<b>12.75</b>	<b>14.88</b>
- Agriculture, forestry and fishing	13.57	14.39	16.35	12.75	14.88
<b>2. Non-Agricultural</b>	<b>24.57</b>	<b>23.88</b>	<b>23.18</b>	<b>25.27</b>	<b>23.97</b>
- Manufacturing	6.13	5.73	5.51	5.85	5.75
- Construction	2.80	2.53	2.36	3.07	2.73
- Wholesale and retail trade; repair of motor vehicles and motorcycles	6.04	5.95	5.83	6.50	5.93
- Transportation and storage	0.85	0.92	0.91	0.96	0.89
- Accommodation and food service activities	2.34	2.29	2.15	2.42	2.45
- Financial and insurance activities	0.48	0.44	0.36	0.50	0.44
- Real estate activities	0.12	0.12	0.17	0.13	0.12
- Public administration defence and compulsory social security	1.76	1.79	1.77	1.66	1.63
- Education	1.19	1.14	1.08	1.20	1.06
- Human health and social work activities	0.59	0.69	0.67	0.65	0.69
- Other service activities	0.72	0.71	0.72	0.64	0.59
- Others	1.55	1.57	1.65	1.69	1.69

The results of Labor Force Survey in May 2013 showed that there are population, aged 15 years and over, of about 54.96 million persons. Of these 39.49 million were in the labor force or available for work (38.85 million were employed, 0.30 million were unemployed and 0.34 million were seasonally inactive labor force), while 15.47 million were not in the labor force or not available for work, such as housewives, students or elderly.

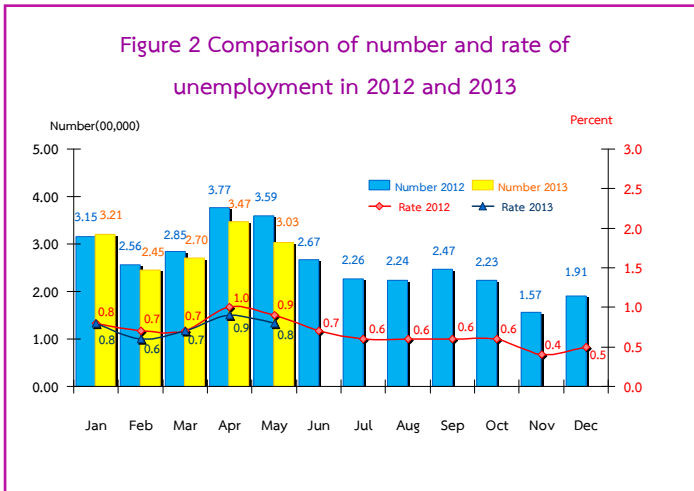
There were 38.85 million employed persons, which 14.88 and 23.97 million were in agriculture and non-agriculture sectors, respectively. Comparing with May in 2012, it was shown that the number of employed persons in agriculture sector increased by 0.49 million and non-agriculture sector increased by 90 thousand. This increment was found in various industries e.g. 0.20 million in construction, 0.16 million in accommodation and food service activities and 20 thousand in manufacturing. However, a decrease in some other industries was found e.g., 0.16 million in public administration and defense, 0.12 million in other service activities (Health service activities, pets care service and laundry & dry cleaning service), 80 thousand in education, 30 thousand in transportation and storage and 20 thousand in wholesale and retail trade, repair of motor vehicles and motorcycles and the rest shared in the other industries.



Remark : Underemployment worker is a worker who working less than 35 hours per week and available for additional work.

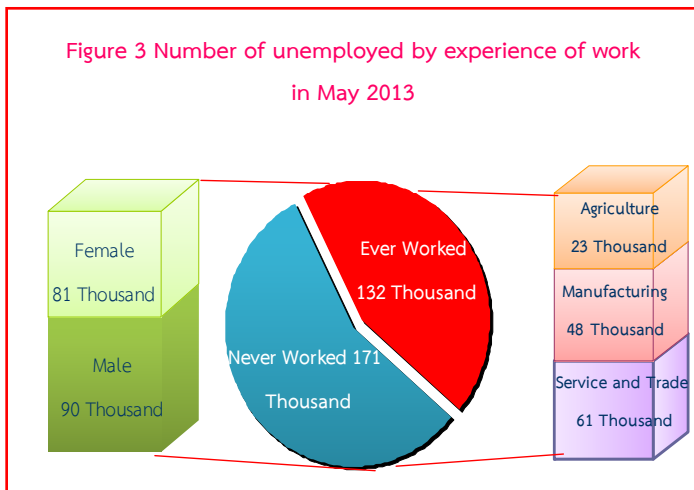
Considering the number of underemployed workers and available for additional work, there were 0.23 million or 0.6% of the total employed persons.

Figure 2 Comparison of number and rate of unemployment in 2012 and 2013



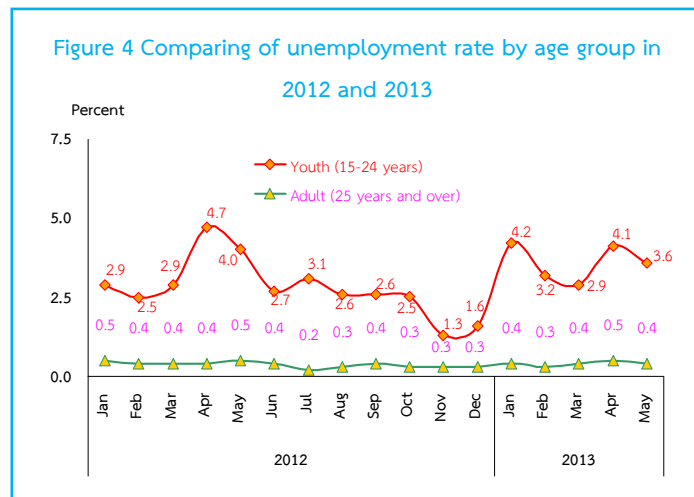
In May 2013, the total number of unemployed persons were 0.30 million or 0.8% of the total labor force and decreased of 56 thousand (from 0.36 million to 0.30 million) comparing to the same period as in 2012. And, it showed a decrease of 44 thousand (from 0.35 million to 0.30 million) in April 2013.

Figure 3 Number of unemployed by experience of work in May 2013



Out of 0.30 million, there were 0.17 million having never worked (90 thousand were male and 81 thousand were female) and 0.13 million had ever, among these, the number of unemployed persons who ever worked decreased by 70 thousand (from 0.20 million to 0.13 million), comparing to the same period as in 2012. It was found that 0.13 million distributed in 3 sectors i.e. 61 thousand in trade and services, 48 thousand in manufacturing and 23 thousand in agriculture.

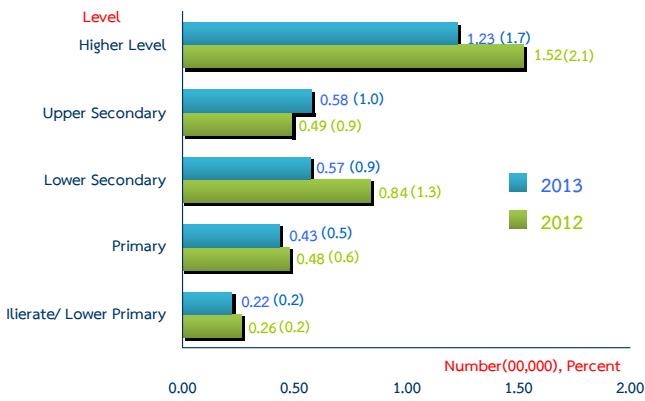
Figure 4 Comparing of unemployment rate by age group in 2012 and 2013



Regarding the unemployment rates by age groups, there were 3.6% in a youth group (aged 15-24 years) and 0.4% in adults group (age 25 years and over).

The unemployment rate in the youth group decreased from 4.0% to 3.6% comparing to the same period as in 2012, and decreased from 4.1% to 3.6% comparing to April in 2013.

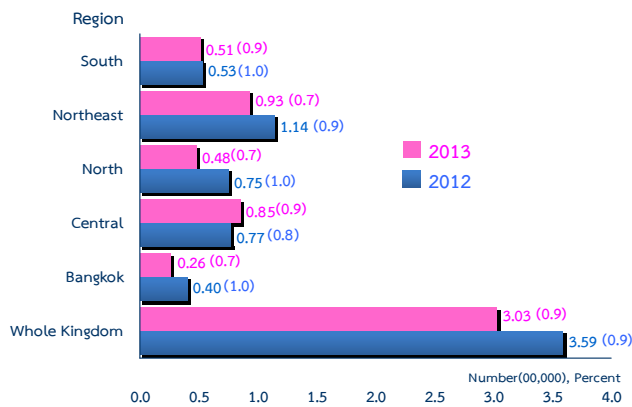
Figure 5 Comparing of number and rate of unemployment by level educational attainment in May 2012 and 2013



For level of educational attainment of unemployed persons in May 2013, it was found that most of them had higher level (0.12 million or 1.7%), followed by those with upper secondary level (58 thousand or 1.0%), lower secondary level (57 thousand or 0.9%), primary level (43 thousand or 0.5%), and illiterate and less than primary level (22 thousand or 0.2%).

Comparing to the same period in 2012, the result showed that the number of unemployed persons with higher level decreased of 29 thousand, lower secondary level of 27 thousand, primary level of 5 thousand and illiterate and less than primary level of 4 thousand. However, those with upper secondary level increased of 9 thousand.

Figure 6 Comparing of number of unemployed and unemployment rate by region in May 2012 and 2013



Concerning the unemployment rate by region, it was found that those in the Central and the South was the highest with 0.9%, followed by those in Bangkok, the North and the Northeast (0.7%).

Comparing to the same period as in 2012, the unemployment rate of the whole kingdom decreased. However, concerning by region, it changes in some regions such as, a decrease in Bangkok, the North, the Northeast and the South, an increase in the Central.