

Summary of the labor force survey in Thailand : May 2014

Table 1 Comparison of population aged 15 years and over by labor force status

Labor force status	2013			2014	
	Apr	May	June	Apr	May
	Unit : million				
Persons over 15 years	54.31	54.36	54.40	54.76	54.79
1. Total labor force	38.24	38.79	39.36	38.03	38.37
1.1 employed	37.55	38.20	39.07	37.33	37.76
1.2 unemployed	0.33	0.31	0.23	0.35	0.36
1.3 seasonally	0.36	0.28	0.06	0.35	0.25
2. Not in labor force	16.07	15.57	15.04	16.73	16.42

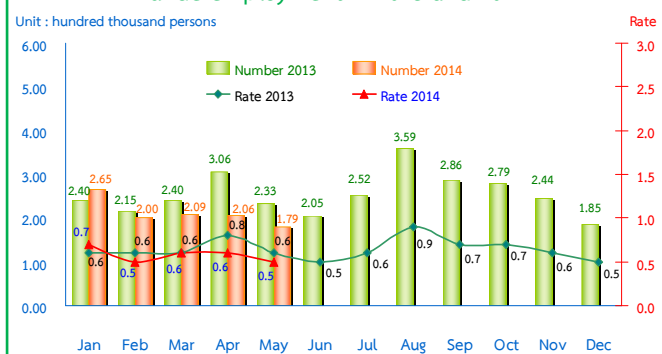
The results of Labor Force Survey in May 2014 showed that there are population, aged 15 years and over, of about 54.79 million persons. Of these 38.37 million were in the labor force or available for work (37.76 million were employed, 0.36 million were unemployed and 0.25 million were seasonally inactive labor force), while 16.42 million were not in the labor force or not available for work, such as housewives, students or elderly.

Table 2 Comparison of number of employed persons by industry

Industry	2013			2014	
	Apr	May	June	Apr	May
	Unit : Million				
Total	37.55	38.20	39.07	37.33	37.76
1. Agricultural	11.13	12.82	14.16	11.04	12.30
- Agriculture, forestry and fishing	11.13	12.82	14.16	11.04	12.30
2. Non-Agricultural	26.42	25.38	24.91	26.29	25.46
- Manufacturing	6.36	6.25	6.32	6.41	6.49
- Construction	2.83	2.53	2.21	2.62	2.28
- Wholesale and retail trade; repair of motor vehicles and motorcycles	6.68	6.26	6.04	6.51	6.25
- Transportation and storage	1.10	1.04	1.16	1.17	1.11
- Accommodation and food service activities	2.61	2.68	2.58	2.68	2.62
- Financial and insurance activities	0.56	0.54	0.55	0.63	0.52
- Real estate activities	0.16	0.15	0.15	0.14	0.16
- Public administration defence and compulsory social security	1.64	1.62	1.59	1.54	1.63
- Education	1.21	1.06	1.13	1.23	1.10
- Human health and social work activities	0.66	0.67	0.61	0.65	0.75
- Other service activities	0.69	0.63	0.71	0.72	0.68
- Others	1.92	1.95	1.86	1.99	1.87

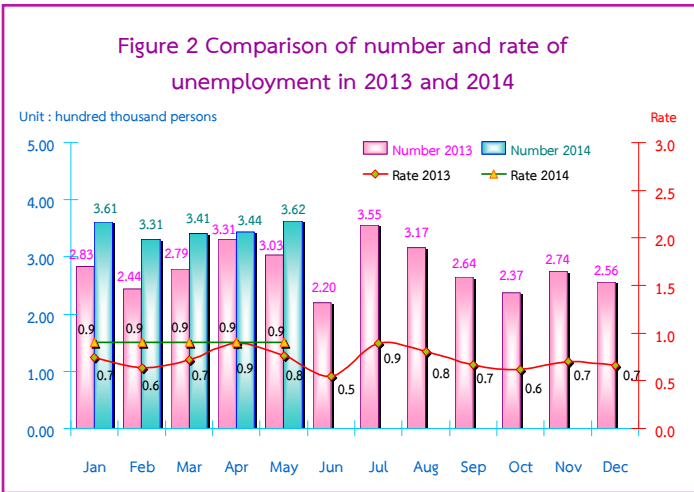
There were 37.76 million employed persons, which 12.30 and 25.46 million were in agriculture and non-agriculture sectors, respectively. Comparing with May in 2013, it was shown that the number of employed persons in agriculture sector decreased by 0.52 million, but non-agriculture sector increased by 80 thousand. This increment was found in various industries e.g. 0.24 million in manufacturing, 80 thousand in human health and social work activities, 70 thousand in transportation and storage, 50 thousand in other service activities, 40 thousand in education, 10 thousand in financial and insurance activities and in public administration defence and compulsory social security. However, an decrease in some other industries was found e.g., 0.25 million in construction, 60 thousand in accommodation and food service activities, 20 thousand in financial and insurance activities and 10 thousand in wholesale and retail trade, repair of motor vehicles and motorcycles and the rest shared in the other industries.

Figure 1 Comparison of number and rate of underemployment in 2013 and 2014

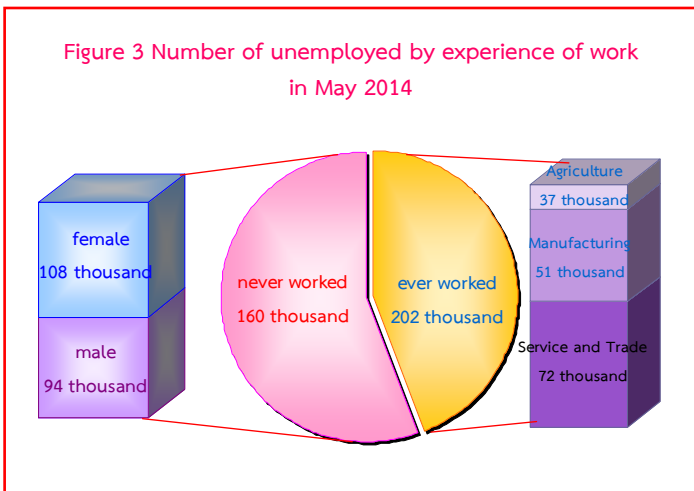


Remark : Underemployment worker is a worker who working less than 35 hours per week and available for additional work.

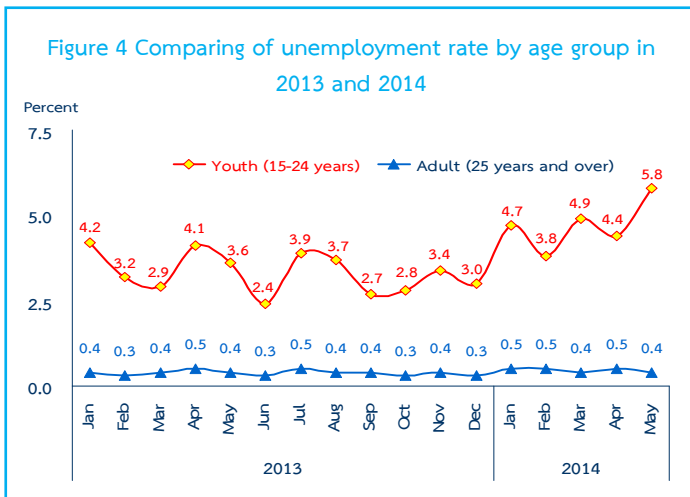
Considering the number of underemployed workers and available for additional work, there were 0.18 million or 0.5% of the total employed persons.



In May 2014, the total number of unemployed persons were 0.36 million or 0.9% of the total labor force and increased of 58 thousand (from 0.30 million to 0.36 million) comparing to the same period as in 2013. And, it showed an increase of 18 thousand (from 0.34 million to 0.36 million) in April 2014.

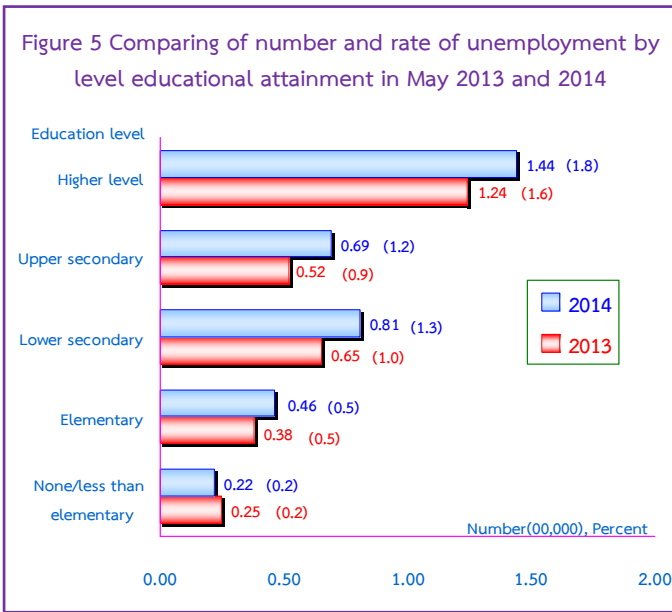


Out of 0.36 million, there were 0.16 million having never worked (94 thousand were male and 108 thousand were female) and 0.20 million had ever worked, among these, the number of unemployed persons who ever worked increased by 32 thousand (from 0.13 million to 0.16 million), comparing to the same period as in 2013. It was found that 0.20 million distributed in 3 sectors i.e. 72 thousand in services and trade, 51 thousand in manufacturing and 37 thousand in agriculture.



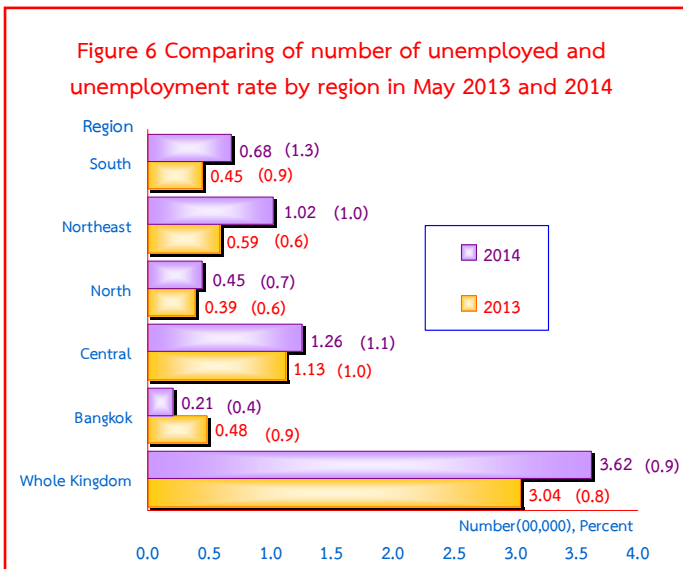
Regarding the unemployment rates by age groups, there were 5.8% in a youth group (aged 15-24 years) and 0.4% in adults group (age 25 years and over).

The unemployment rate in the youth group increased from 3.6% to 5.8% comparing to the same period as in 2013, and increased from 4.4% to 5.8% comparing to April in 2014.



For level of educational attainment of unemployed persons in May 2014, it was found that most of them had higher level (0.14 million or 1.8%), followed by those with lower secondary level (81 thousand or 1.3%), upper secondary level (69 thousand or 1.2%), primary level (46 thousand or 0.5%) and illiterate and less than primary level (22 thousand or 0.2%).

Comparing to the same period in 2013, the result showed that the number of unemployed persons with higher level increased of 20 thousand, upper secondary level of 17 thousand, lower secondary level of 16 thousand, and primary level of 8 thousand. However, those with illiterate less than primary level decreased of 3 thousand.



Concerning the unemployment rate by region, it was found that those in the South was the highest with 1.3%, the Central (1.1%), the Northeast (1.0%), the North (0.7%) and Bangkok (0.4%).

Comparing to the same period as in 2013, the unemployment rate of the whole kingdom increased. However, concerning by region, it changes in some regions such as, an increase in the Northeast, the South, the Central and the North, but a decrease in Bangkok.