

Summary of the labor force survey in Thailand : July 2014

Table 1 Comparison of population aged 15 years and over by labor force status

Unit : million

Labor force status	2013			2014	
	June	July	Aug	June	July
Persons over 15 years	54.40	54.45	54.48	54.83	54.87
1. Total labor force	39.36	38.96	38.55	38.93	38.90
1.1 employed	39.07	38.57	38.20	38.38	38.49
1.2 unemployed	0.23	0.36	0.31	0.45	0.38
1.3 seasonally	0.06	0.03	0.04	0.10	0.03
2. Not in labor force	15.04	15.49	15.93	15.90	15.97

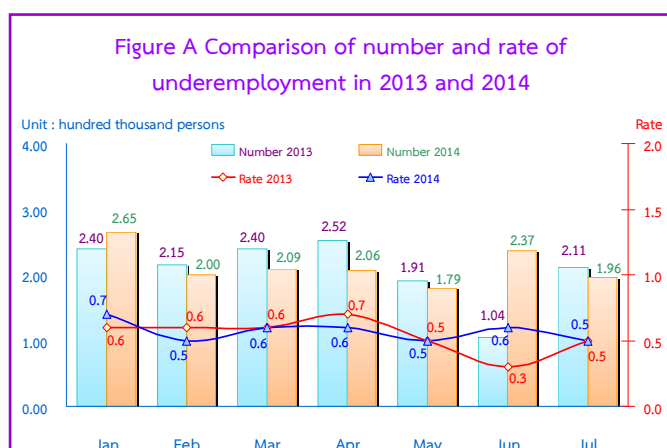
Table 2 Comparison of number of employed persons by industry

Unit : Million

Industry	2013			2014	
	June	July	Aug	June	July
Total	39.07	38.57	38.20	38.38	38.49
1. Agricultural	14.16	13.97	13.92	13.60	13.21
- Agriculture, forestry and fishing	14.16	13.97	13.92	13.60	13.21
2. Non-Agricultural	24.91	24.60	24.27	24.78	25.28
- Manufacturing	6.32	6.44	6.14	6.27	6.49
- Construction	2.21	2.17	2.03	2.22	2.12
- Wholesale and retail trade; repair of motor vehicles and motorcycles	6.04	5.98	5.83	5.70	6.19
- Transportation and storage	1.16	1.11	1.12	1.22	1.19
- Accommodation and food service activities	2.58	2.41	2.48	2.47	2.55
- Financial and insurance activities	0.55	0.54	0.50	0.51	0.49
- Real estate activities	0.15	0.20	0.15	0.15	0.15
- Public administration defence and compulsory social security	1.59	1.59	1.58	1.62	1.62
- Education	1.13	1.10	1.13	1.16	1.12
- Human health and social work activities	0.61	0.58	0.70	0.65	0.66
- Other service activities	0.71	0.61	0.63	0.82	0.74
- Others	1.86	1.87	1.98	1.99	1.96

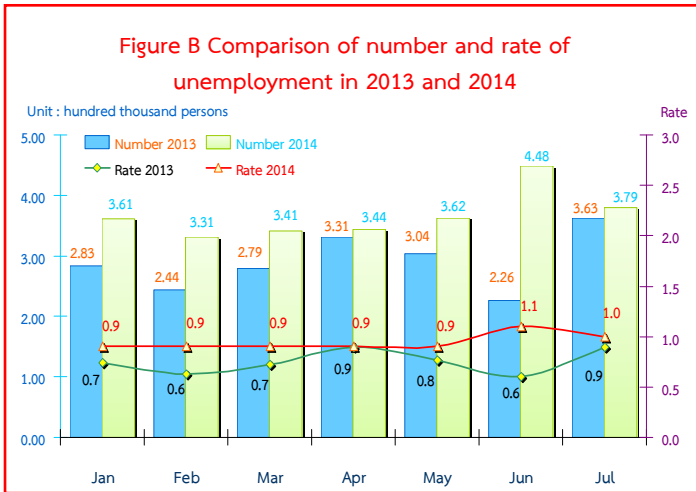
The results of Labor Force Survey in July 2014 showed that there are population, aged 15 years and over, of about 54.87 million persons. Of these 38.90 million were in the labor force or available for work (38.49 million were employed, 0.38 million were unemployed and 0.34 million were seasonally inactive labor force), while 15.97 million were not in the labor force or not available for work, such as housewives, students or elderly.

There were 38.49 million employed persons, which 13.21 and 25.28 million were in agriculture and non-agriculture sectors, respectively. Comparing with July in 2013, it was shown that the number of employed persons in agriculture sector decreased by 0.76 million, and non-agriculture sector increased by 0.68 million. This increment was found in various industries e.g. 0.21 million in wholesale and retail trade, repair of motor vehicles and motorcycles, 0.14 million in accommodation and food service activities, 0.13 million in other service activities, 80 thousand in transportation and storage and in human health and social work activities, 50 thousand in manufacturing, However, an decrease in some other industries was found e.g., 50 thousand in construction, in financial and insurance activities and in real estate activities and the rest shared in the other industries.

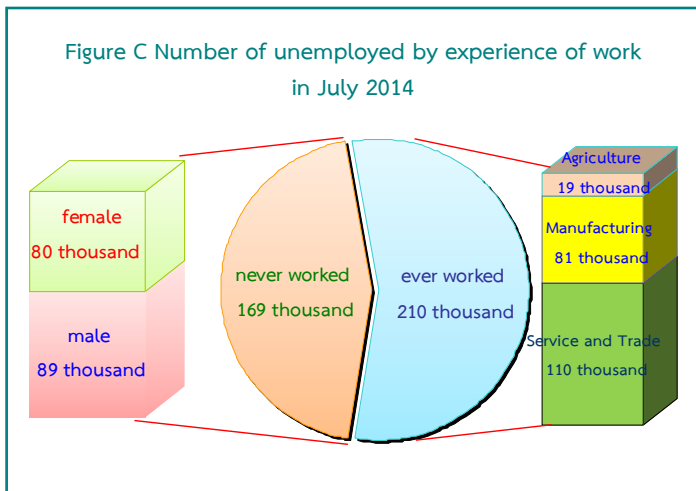


Remark : Underemployment worker is a worker who working less than 35 hours per week and available for additional work.

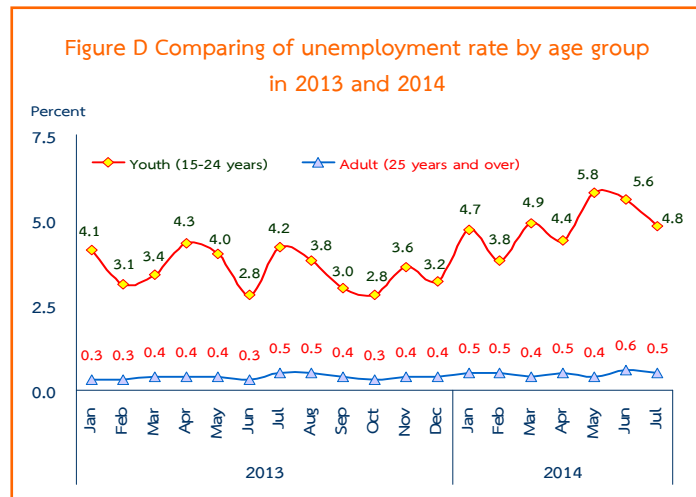
Considering the number of underemployed workers and available for additional work, there were 0.20 million or 0.5% of the total employed persons.



In July 2014, the total number of unemployed persons were 0.38 million or 1.0% of the total labor force and increased of 16 thousand (from 0.36 million to 0.38 million) comparing to the same period as in 2013. But, it showed a decrease of 69 thousand (from 0.45 million to 0.38 million) in June 2014.



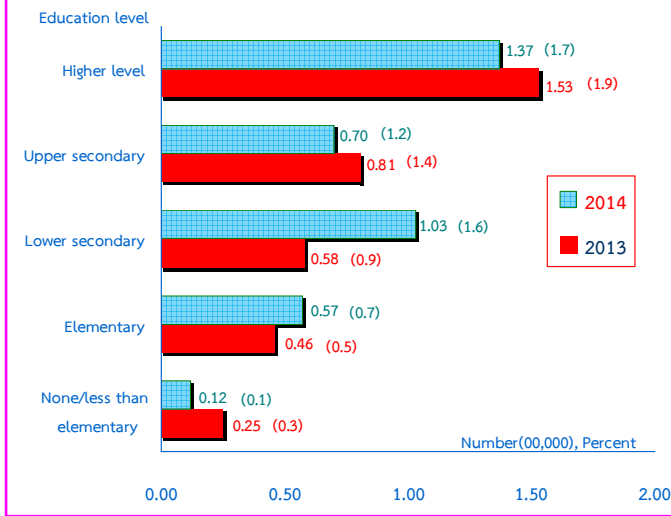
Out of 0.38 million, there were 0.17 million having never worked (89 thousand were male and 80 thousand were female) and 0.21 million had ever, among these, the number of unemployed persons who ever worked increased by 35 thousand (from 0.18 million to 0.21 million), comparing to the same period as in 2013. It was found that 0.21 million distributed in 3 sectors i.e. 0.11 million in services and trade, 81 thousand in manufacturing and 19 thousand in agriculture.



Regarding the unemployment rates by age groups, there were 4.8% in a youth group (aged 15-24 years) and 0.5% in adults group (age 25 years and over).

The unemployment rate in the youth group increased from 4.2% to 4.8% comparing to the same period as in 2013, but decreased from 5.6% to 4.8% comparing to June in 2014.

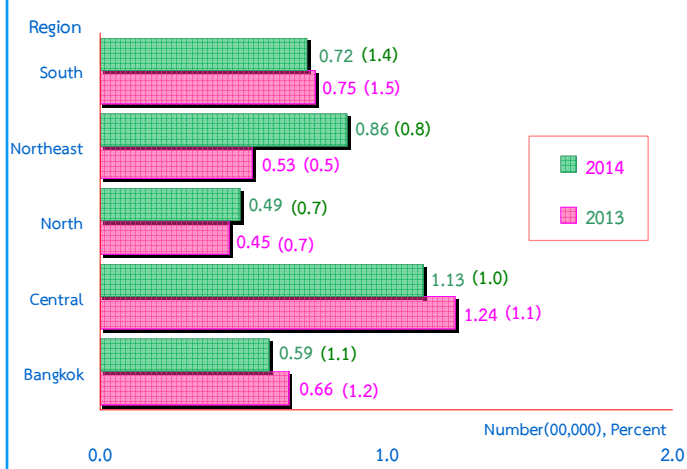
Figure E Comparing of number and rate of unemployment by level educational attainment in July 2013 and 2014



For level of educational attainment of unemployed persons in July 2014, it was found that most of them had higher level (0.14 million or 1.7%), followed by those with lower secondary level (0.10 million or 1.6%), upper secondary level (70 thousand or 1.2%), primary level (57 thousand or 0.7%) and illiterate and less than primary level (12 thousand or 0.1%).

Comparing to the same period in 2013, the result showed that the number of unemployed persons with lower secondary level increased of 45 thousand and primary level of 11 thousand. However, those with higher level decreased of 16 thousand, illiterate less than primary level of 13 thousand and upper secondary level of 11 thousand.

Figure F Comparing of number of unemployed and unemployment rate by region in July 2013 and 2014



Concerning the unemployment rate by region, it was found that those in the Central was the highest with (0.11 million or 1.0%), followed by the Northeast (86 thousand or 0.8%), the South (72 thousand or 1.4%), Bangkok (59 thousand or 1.1%) and the North (49 thousand or 0.7%).

Comparing to the same period as in 2013, the number of unemployment persons of the whole kingdom increased from 0.36 million to 0.38 million. However, concerning by region, it changes in some regions such as, an increase in the Northeast and the North, but a decrease in the Central, Bangkok and the South.