

## Summary of the labor force survey in Thailand : October 2014

**Table 1 Comparison of population aged 15 years and over by labor force status**

Labor force status	Unit : million					
	2013*			2014*		
	Sep	Oct	Nov	Sep	Oct	
Persons over 15 years	54.51	54.55	54.58	54.93	54.96	
<b>1. Total labor force</b>	<b>38.55</b>	<b>38.39</b>	<b>38.76</b>	<b>38.85</b>	<b>38.31</b>	
1.1 employed	38.22	38.02	38.40	38.45	37.92	
1.2 unemployed	0.27	0.24	0.27	0.31	0.29	
1.3 seasonally	0.06	0.13	0.09	0.09	0.10	
<b>2. Not in labor force</b>	<b>15.96</b>	<b>16.16</b>	<b>15.82</b>	<b>16.08</b>	<b>16.65</b>	

\* The new series of Population Projection for Thailand, 2010 - 2040

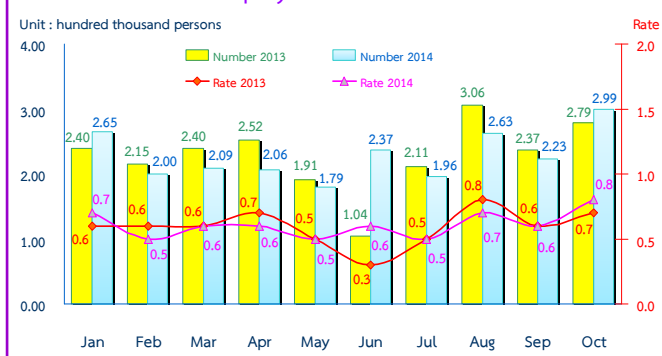
**Table 2 Comparison of number of employed persons by industry**

Industry	2013			2014	
	Sep	Oct	Nov	Sep	Oct
<b>Total</b>	<b>38.22</b>	<b>38.02</b>	<b>38.40</b>	<b>38.45</b>	<b>37.92</b>
<b>1. Agricultural</b>	<b>13.42</b>	<b>12.85</b>	<b>14.02</b>	<b>13.50</b>	<b>12.28</b>
- Agriculture, forestry and fishing	13.42	12.85	14.02	13.50	12.28
<b>2. Non-Agricultural</b>	<b>24.80</b>	<b>25.17</b>	<b>24.38</b>	<b>24.95</b>	<b>25.64</b>
- Manufacturing	6.39	6.47	6.04	6.28	6.63
- Construction	2.31	2.36	2.11	2.20	2.15
- Wholesale and retail trade; repair of motor vehicles and motorcycles	6.02	6.28	5.82	6.00	6.23
- Transportation and storage	1.08	1.17	1.26	1.09	1.32
- Accommodation and food service activities	2.41	2.42	2.52	2.58	2.56
- Financial and insurance activities	0.53	0.51	0.63	0.47	0.50
- Real estate activities	0.17	0.17	0.16	0.15	0.20
- Public administration defence and compulsory social security	1.54	1.63	1.49	1.56	1.65
- Education	1.07	1.10	1.18	1.13	1.13
- Human health and social work activities	0.63	0.62	0.68	0.63	0.61
- Other service activities	0.74	0.61	0.69	0.83	0.74
- Others	1.92	1.83	1.80	2.03	1.92

The results of Labor Force Survey in October 2014 showed that there are population, aged 15 years and over, of about 54.96 million persons. Of these 38.31 million were in the labor force or available for work (37.92 million were employed, 0.29 million were unemployed and 0.01 million were seasonally inactive labor force), while 16.65 million were not in the labor force or not available for work, such as housewives, students or elderly.

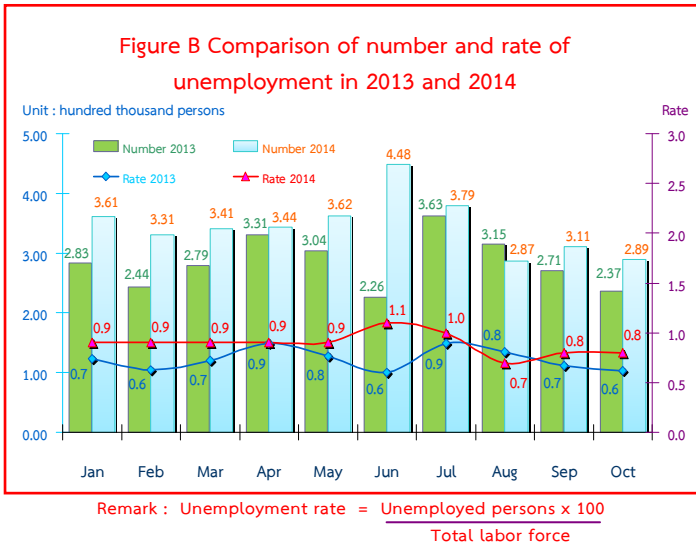
There were 37.92 million employed persons, which 12.28 and 25.64 million were in agriculture and non-agriculture sectors, respectively. Comparing with October in 2013, it was shown that the number of employed persons in agriculture sector decreased by 0.57 million, but non-agriculture sector increased by 0.47 million. This increment was found in various industries e.g. 0.16 million in manufacturing, 0.15 million in transportation and storage, 0.14 million in accommodation and food service activities, 0.13 million in other service activities, 30 thousand in real estate activities and in education, 20 thousand public administration defence and compulsory social security. However, an decrease in some other industries was found e.g., 0.21 million construction, 50 thousand in wholesale and retail trade, repair of motor vehicles and motorcycles, 10 thousand in financial and insurance activities and human health and social work activities and the rest shared in the other industries.

**Figure A Comparison of number and rate of underemployment in 2013 and 2014**

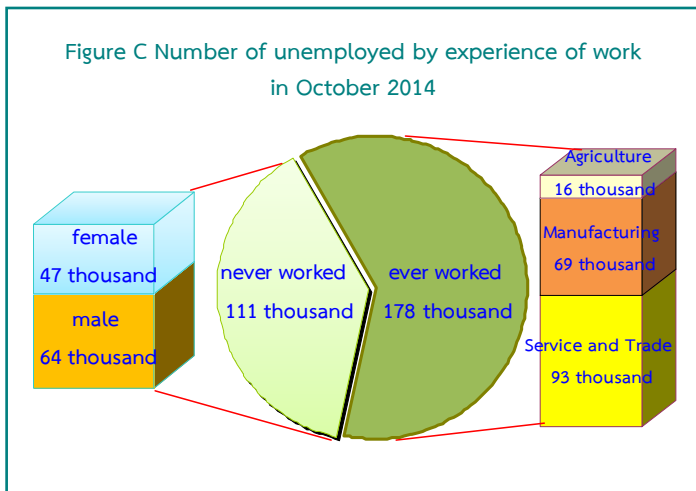


Remark : Underemployment worker is a worker who working less than 35 hours per week and available for additional work.

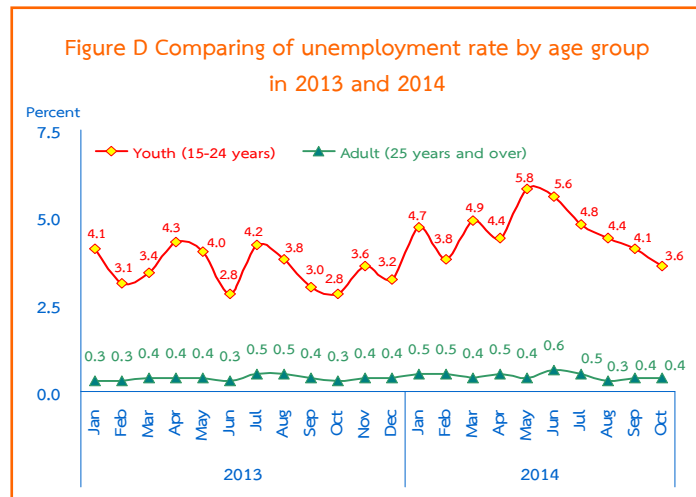
Considering the number of underemployed workers and available for additional work, there were 0.30 million or 0.8% of the total employed persons.



In October 2014, the total number of unemployed persons were 0.29 million or 0.8% of the total labor force and increased of 52 thousand (from 0.24 million to 0.29 million) comparing to the same period as in 2013. But, it showed a decrease of 22 thousand (from 0.31 million to 0.29 million) in September 2014.



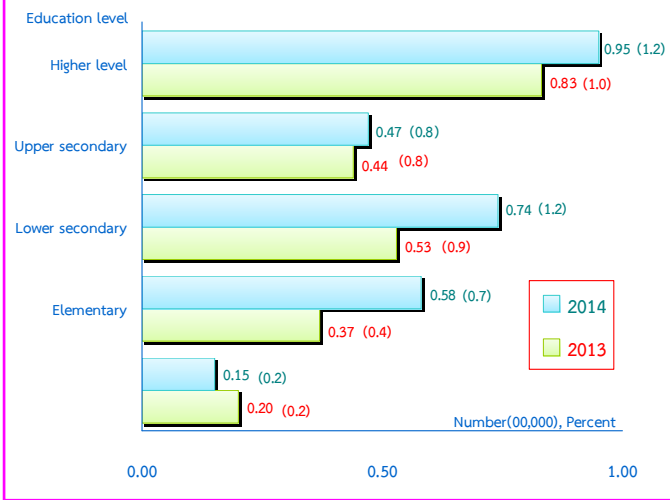
Out of 0.29 million, there were 0.11 million having never worked (64 thousand were male and 47 thousand were female) and 0.18 million had ever, among these, the number of unemployed persons who ever worked increased by 31 thousand (from 0.15 million to 0.18 million), comparing to the same period as in 2013. It was found that 0.18 million distributed in 3 sectors i.e. 93 thousand in services and trade, 69 thousand in manufacturing and 16 thousand in agriculture.



Regarding the unemployment rates by age groups, there were 3.6% in a youth group (aged 15-24 years) and 0.4% in adults group (age 25 years and over).

The unemployment rate in the youth group increased from 2.8% to 3.6% comparing to the same period as in 2013, but decreased from 4.1% to 3.6% comparing to September in 2014.

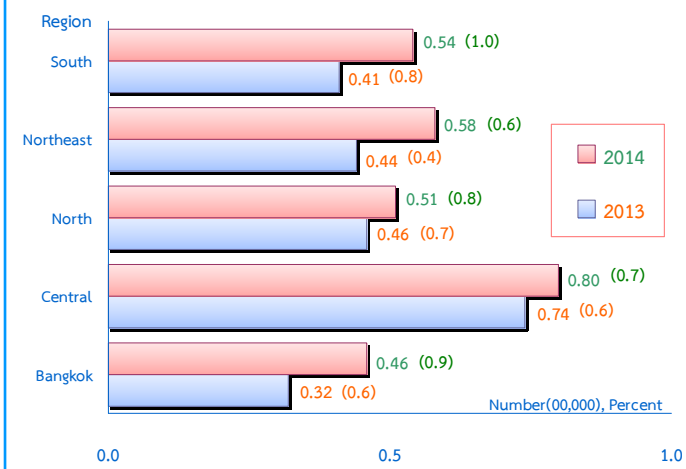
Figure E Comparing of number and rate of unemployment by level educational attainment in October 2013 and 2014



For level of educational attainment of unemployed persons in October 2014, it was found that most of them had higher level (95 thousand or 1.2%), followed by those with lower secondary level (74 thousand or 1.2%), primary level (58 thousand or 0.7%), upper secondary level (47 thousand or 0.8%) and illiterate and less than primary level (15 thousand or 0.2%).

Comparing to the same period in 2013, the result showed that the number of unemployed persons with primary level and lower secondary level increased of 21 thousand, followed by those with higher level of 12 thousand and upper secondary level of 3 thousand. However, those with illiterate less than primary level of decreased of 5 thousand.

Figure F Comparing of number of unemployed and unemployment rate by region in October 2013 and 2014



Concerning the number of unemployed and the unemployment rate by region, it was found that those in the Central was the highest with (80 thousand or 0.7%), followed by the Northeast (58 thousand or 0.6%), the South (54 thousand or 1.0%), the North (51 thousand or 0.8%) and Bangkok (46 thousand or 0.9%).

Comparing to the same period as in 2013, the number of unemployment persons of the whole kingdom increased from 0.24 million to 0.29 million. And concerning by region, it increases in all regions.