

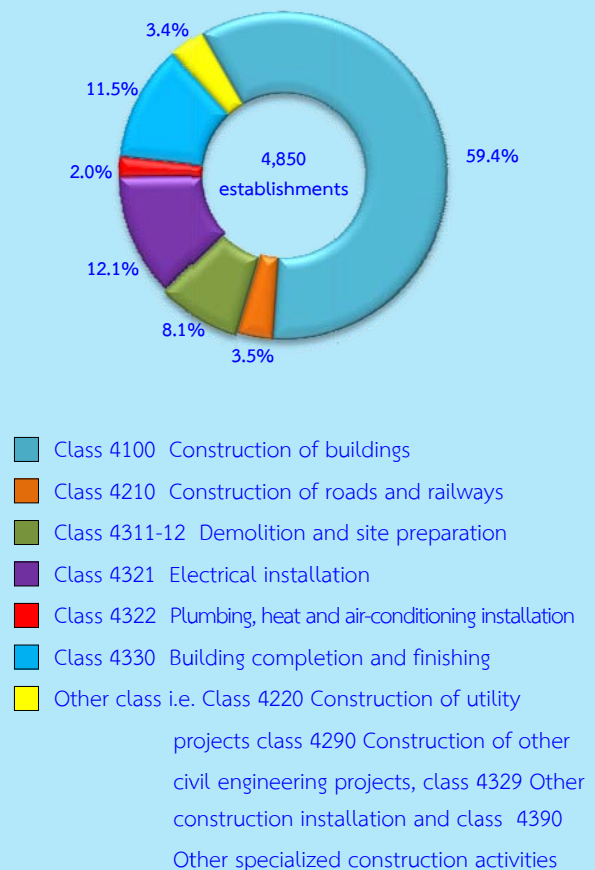
## Executive summary

The National Statistical Office (NSO) carried out the 2014 Construction Industry Survey, which is the 4<sup>th</sup> survey and the NSO planned for conducting this survey every 5 years. The main objective of the survey is to collect basic information data on construction establishments. Data is vital to economic development planning of the country and to private employment planning as well, the survey covered all construction establishments in the Whole Kingdom, which engaged in construction of buildings, civil engineering and specialized construction activities (Section F of The Thailand Standard Industrial Classifications: TSIC 2009). The field work was conducted during June 1 to September 30, 2014. The totally sample were from 2,005 establishments. The data presented in this report was the operation of the construction establishments located **in the Southern region** during January 1 to December 31, 2013. The major findings are as follows:

### 1. Number of establishment

The results of the 2014 Construction Industry Survey of 4,850 establishments in the Southern region, it was found that most of them (59.4 percent) were engaged in *construction of buildings*. Followed by those engaged in *electrical installation* were 12.1 percent. The establishment engaged in *building completion and finishing* and *demolition and site preparation* were 11.5 and 8.1 percent respectively. The other class of construction industry not mentioned above had rather low proportion each had less than 4.0 percent of the total.

Figure 1 Percentage of construction establishments by class of construction industry



### 2. Size of establishment

Most of them were 74.2 percent with 1 - 5 persons engaged. The establishment with 6 - 10 persons engaged was 16.0 percent. For the establishment with more than 10 persons engaged was 9.8 percent.

Considering by class of construction industry, it was found that most the establishment (more than 50.0 percent) was small size with 1 - 5 persons engaged. Except for those engaged in *construction of roads and railways* and *other specialized construction activities*.

**Table 1 Percentage of construction establishments by size of establishment and class of construction industry**

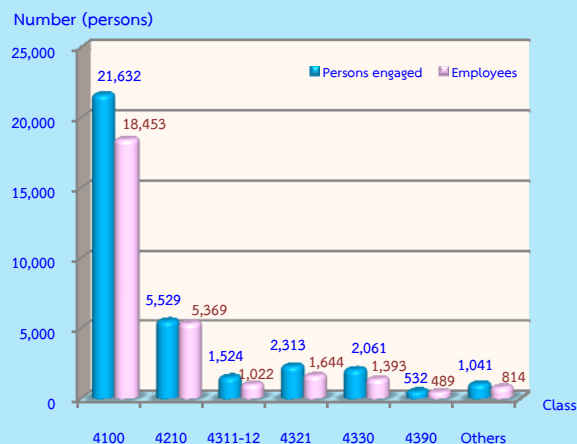
(unit : persons)

| Class of construction industry                        | Total        | 1 – 5       | 6 – 10      | 11 – 15    | 16 – 20    | > 20       |
|---|--------------|-------------|-------------|------------|------------|------------|
| <b>Total</b>  | <b>100.0</b> | <b>74.2</b> | <b>16.0</b> | <b>4.1</b> | <b>1.6</b> | <b>4.1</b> |
| 4100 Construction of buildings                        | 100.0        | 70.9        | 19.3        | 4.5        | 1.5        | 3.8        |
| 4210 Construction of roads and railways               | 100.0        | 15.2        | 26.3        | 15.2       | 7.6        | 35.7       |
| 4220 Construction of utility projects                 | 100.0        | 62.7        | 16.9        | 10.2       | 3.4        | 6.8        |
| 4290 Construction of other civil engineering projects | 100.0        | 57.1        | 14.3        | -          | -          | 28.6       |
| 4311-12 Demolition and site preparation               | 100.0        | 84.0        | 11.7        | 2.0        | 1.0        | 1.3        |
| 4321 Electrical installation                          | 100.0        | 86.2        | 8.2         | 3.2        | 0.9        | 1.5        |
| 4322 Plumbing, heat and air-conditioning installation | 100.0        | 83.1        | 13.6        | 1.1        | 1.1        | 1.1        |
| 4329 Other construction installation                  | 100.0        | 85.4        | 12.2        | -          | -          | 2.4        |
| 4330 Building completion and finishing                | 100.0        | 92.3        | 5.6         | 1.1        | 0.7        | 0.3        |
| 4390 Other specialized construction activities        | 100.0        | 46.6        | 36.2        | 3.4        | 5.2        | 8.6        |

### 3. Number of persons engaged and employees

In 2013, the workers of the construction establishments in the Southern region were totally 34,632 persons. In term of employments, the number of employees totally to 29,184 persons. Considering by class of construction industry, it was found that most of them worked in *construction of buildings*, of about 18,453 persons or 63.2 percent. Followed by those worked in *construction roads and railways* about 5,369 persons or 18.4 percent. The rest engaged in class of construction industry not mentioned above.

**Figure 2 Number of persons engaged construction establishments by class of construction industry**



**Note :** Persons engaged refer to owners or juristic partnerships, unpaid workers and employees

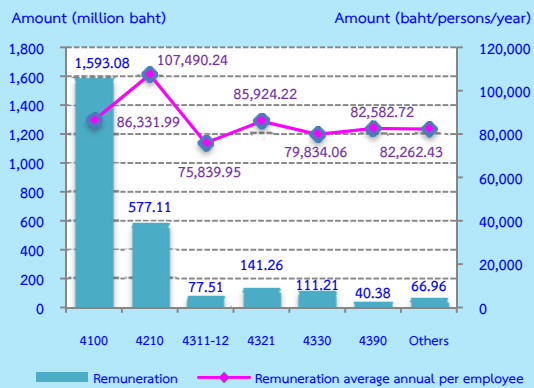
#### Class of construction industry :

- Class 4100 Construction of buildings
- Class 4210 Construction of roads and railways
- Class 4311-12 Demolition and site preparation
- Class 4321 Electrical installation
- Class 4330 Building completion and finishing
- Class 4390 Other specialized construction activities
- Other class i.e. class 4220 Construction of utility projects 4290 Construction of other civil engineering projects, class 4322 Plumbing, heat and air-conditioning installation and class 4329 Other construction installation

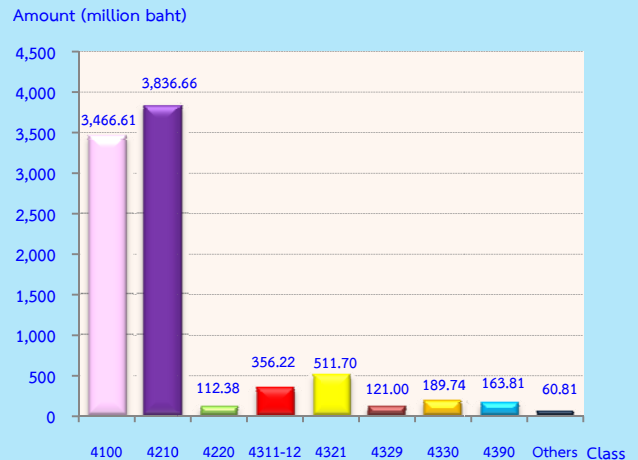
### 4. Remuneration

In 2013, the employees working in construction establishments in the Southern region received the total remuneration about 2,607.52 million baht or about 89,347.61 baht per persons annually. The employees engaged in *construction of roads and railways* received the highest annual remuneration of about 107,490.24 baht per person. While the establishment engaged in *demolition and site preparation* the lowest annual remuneration of about 75,839.95 baht per persons.

**Figure 3 Remuneration of construction establishments by class of construction industry**



**Figure 4 Value added of construction establishments by class of construction industry**



## 5. Value of gross output, intermediate consumption and value added

The value of gross output or receipts of construction establishments were totally 25,668.19 million baht. The intermediate consumption and value added were totally 16,849.13 million baht and 8,818.06 million baht respectively. Comparing the value added to value of gross output or receive was about 34.4 percent.

For the average value of gross output had about 5.29 million baht per establishment and 741,200 baht per persons.

In terms of the average value added, they were about 1.82 million baht per establishment and 254,700 baht per persons respectively.

Considering by class of construction industry, it was found that most of value added were from *construction of roads and railways*, (about 3,836.66 million baht or 43.5 percent). The following was from *construction of buildings*, (about 3,466.61 million baht or 39.3 percent). The other class of construction industry had rather low proportion less than 6.0 percent.

**Value added** = value of gross output or receives - intermediate consumption

**Value of gross output or receives** refer to receipts of establishments in 2013

**Intermediate consumption** refer to expenditure of construction establishments in 2013

### Class of construction industry:

- Class 4100 Construction of buildings
- Class 4210 Construction of roads and railways
- Class 4220 Construction of utility projects
- Class 4311-12 Demolition and site preparation
- Class 4321 Electrical installation
- Class 4329 Other construction installation
- Class 4330 Building completion and finishing
- Class 4390 Other specialized construction activities
- Other class i.e., Class 4290 Construction of other civil engineering projects class 4322 Plumbing, heat and air-conditioning installation