

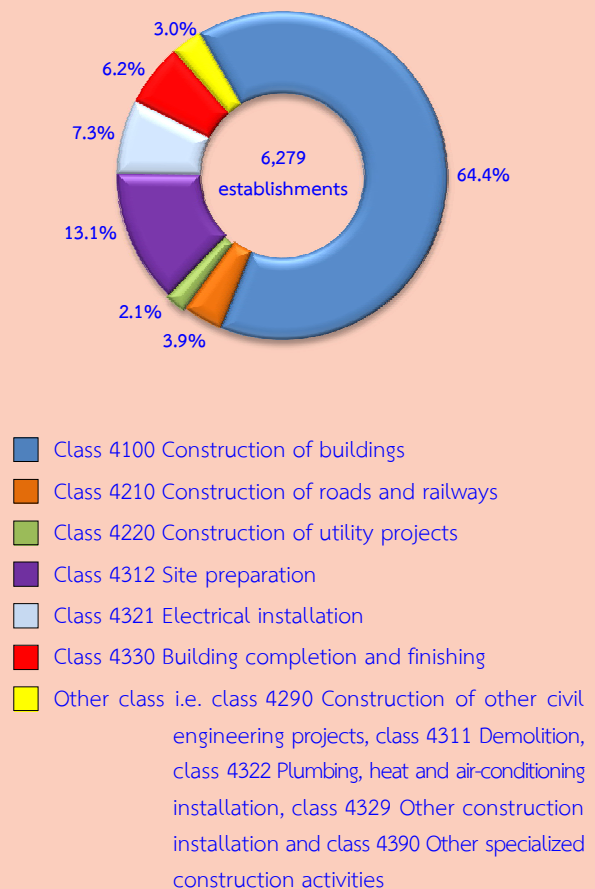
## Executive summary

The National Statistical Office (NSO) carried out the 2014 Construction Industry Survey, which is the 4<sup>th</sup> survey and the NSO planned for conducting this survey every 5 years. The main objective of the survey is to collect basic information data on construction establishments. Data is vital to economic development planning of the country and to private employment planning as well, the survey covered all construction establishments in the Whole Kingdom, which engaged in construction of buildings, civil engineering and specialized construction activities (Section F of The Thailand Standard Industrial Classifications: TSIC 2009). The field work was conducted during June 1 to September 30, 2014. The total sample were from 2,539 establishments. The data presented in this report was the operation of the construction establishments located in the Northern region during January 1 to December 31, 2013. The major findings are as follows:

### 1. Number of establishment

The results of the 2014 Construction Industry Survey of 6,279 establishments in the Northern region, it was found that most of them (64.4 percent) were engaged in *construction of buildings*. Followed by those engaged in *site preparation* were 13.1 percent. The establishment engaged in *electrical installation* and *building completion and finishing* were 7.3 and 6.2 percent respectively. The other class of construction industry not mentioned above had rather low proportion each had less than 4.0 percent of the total.

Figure 1 Percentage of construction establishments by class of construction industry



### 2. Size of establishment (number of persons engaged)

Most of them were 68.0 percent with 1 - 5 persons engaged. The establishment with 6 - 10 persons engaged was 21.5 percent. For the establishment with more than 10 persons engaged was 10.5 percent.

Considering by class of construction industry, it was found that most the establishment (more than 50.0 percent) was small size with 1 - 5 persons engaged. Except for those engaged in *construction of roads and railways*.

**Table 1 Percentage of construction establishments by size of establishment (number of persons engaged) and class of construction industry**

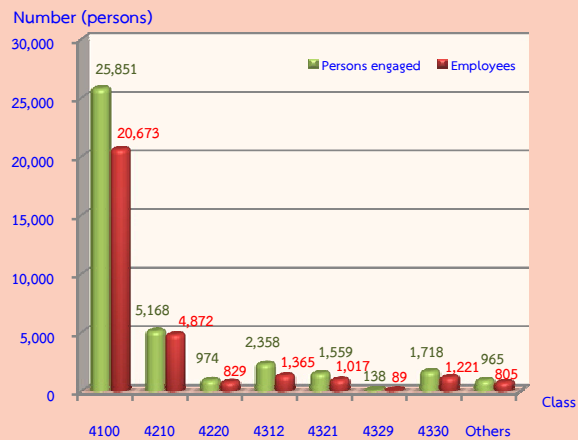
(unit : persons)

Class of construction industry	Total	1 – 5	6 – 10	11 – 15	16 – 20	> 20
<b>Total</b>	<b>100.0</b>	<b>68.0</b>	<b>21.5</b>	<b>5.7</b>	<b>1.6</b>	<b>3.2</b>
4100 Construction of buildings	100.0	61.5	27.8	6.6	1.5	2.6
4210 Construction of roads and railways	100.0	20.2	26.7	16.5	7.4	29.2
4220 Construction of utility projects	100.0	74.4	12.0	5.3	2.3	6.0
4290 Construction of other civil engineering projects	100.0	52.4	19.0	14.3	4.8	9.5
4311 Demolition	100.0	75.0	-	-	-	25.0
4312 Site preparation	100.0	90.8	6.4	1.7	0.6	0.5
4321 Electrical installation	100.0	88.7	7.2	2.6	1.3	0.2
4322 Plumbing, heat and air-conditioning installation	100.0	87.1	7.7	1.3	1.3	2.6
4329 Other construction installation	100.0	92.7	4.9	2.4	-	-
4330 Building completion and finishing	100.0	85.6	11.3	1.3	0.5	1.3
4390 Other specialized construction activities	100.0	57.7	15.6	15.6	2.2	8.9

### 3. Number of persons engaged and employees

In 2013, the workers of the construction establishments in the Northern region totally to 38,732 persons. In term of employments, the number of employees totally to 30,871 persons. Considering by class of construction industry, it was found that most of them worked in *construction of buildings*, of about 20,673 persons or 66.9 percent. Followed by those worked in *construction roads and railways* about 4,872 persons or 15.8 percent. The rest engaged in class of construction industry not mentioned above.

**Figure 2 Number of persons engaged construction establishments by class of construction industry**



**Note :** Persons engaged refer to owners or juristic partnerships, unpaid workers and employees

#### Class of construction industry :

- Class 4100 Construction of buildings
- Class 4210 Construction of roads and railways
- Class 4220 Construction of utility projects
- Class 4312 Site preparation
- Class 4321 Electrical installation
- Class 4329 Other construction installation
- Class 4330 Building completion and finishing
- Other class i.e. class 4290 Construction of other civil engineering projects, class 4311 Demolition, class 4322 Plumbing, heat and air-conditioning installation and class 4390 Other specialized construction activities

### 4. Remuneration

In 2013, the employees working in construction establishments in the Northern region received the total remuneration about 2,541.79 million baht or about 82,336.00 baht per persons annually. The employees engaged in *construction of roads and railways* received the highest annual remuneration of about 105,070.54 baht per person. While the establishment engaged in *other construction installation* the lowest annual remuneration of about 56,531.80 baht per persons.

Figure 3 Remuneration of construction establishments by class of construction industry

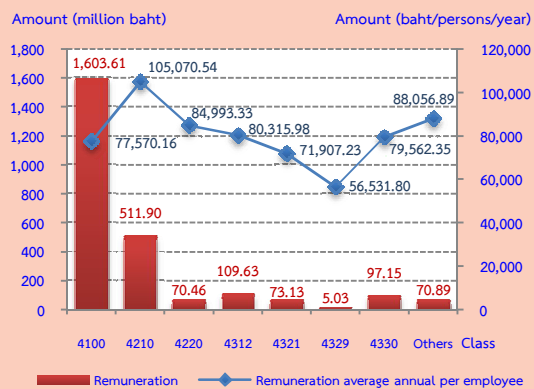
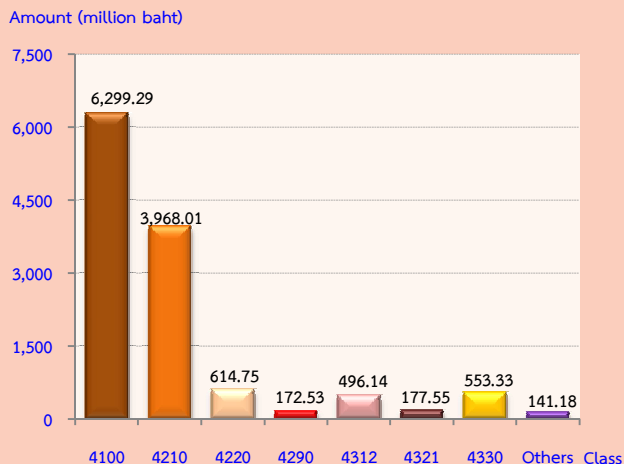


Figure 4 Value added of construction establishments by class of construction industry



### 5. Value of gross output, intermediate consumption and value added

The value of gross output or receipts of construction establishments were totally 37,718.14 million baht. The intermediate consumption and value added were totally 25,295.34 million baht and 12,422.79 million baht respectively. Comparing the value added to value of gross output or receive was about 32.9 percent.

For the average value of gross output had about 6.01 million baht per establishment and 973,800 baht per persons.

In terms of the average value added, they were about 1.98 million baht per establishment and 320,700 baht per persons respectively.

Considering by class of construction industry, it was found that most of value added were from *construction of buildings* with the highest proportion (about 6,299.29 million baht or 50.7 percent). The following was from *construction of roads and railways*, (about 3,968.01 million baht or 31.9 percent). The other class of construction industry had rather low proportion less than 5.0 percent.

**Value added** = value of gross output or receives – intermediate consumption

**Value of gross output or receives** refer to receipts of establishments in 2013

**Intermediate consumption** refer to expenditure of construction establishments in 2013

#### Class of construction industry:

- Class 4100 Construction of buildings
- Class 4210 Construction of roads and railways
- Class 4220 Construction of utility projects
- Class 4290 Construction of other civil engineering projects
- Class 4312 Site preparation
- Class 4321 Electrical installation
- Class 4330 Building completion and finishing
- Other class i.e., class 4311 Demolition, class 4322 Plumbing, heat and air-conditioning installation, class 4329 Other construction installation and class 4390 Other specialized construction activities