

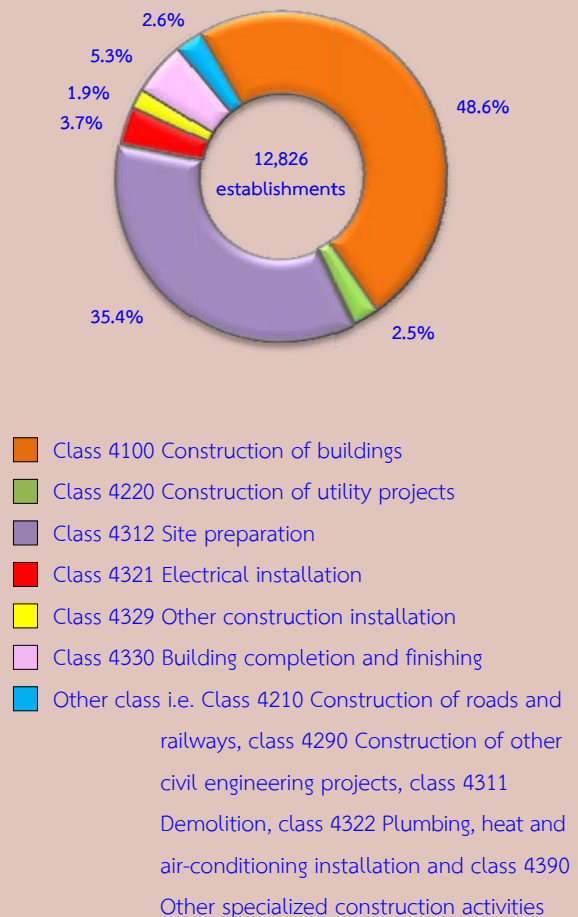
## Executive summary

The National Statistical Office (NSO) carried out the 2014 Construction Industry Survey, which is the 4<sup>th</sup> survey and the NSO planned for conducting this survey every 5 years. The main objective of the survey is to collect basic information data on construction establishments. Data is vital to economic development planning of the country and to private employment planning as well, the survey covered all construction establishments in the Whole Kingdom, which engaged in construction of buildings, civil engineering and specialized construction activities (Section F of The Thailand Standard Industrial Classifications: TSIC 2009). The field work was conducted during June 1 to September 30, 2014. The totally sample were from 3,464 establishments. The data presented in this report was the operation of the construction establishments located in the **Northeastern region** during January 1 to December 31, 2013. The major findings are as follows:

### 1. Number of establishment

The results of the 2014 Construction Industry Survey of 12,826 establishments in the Northeastern region, it was found that most of them (48.6 percent) were engaged in *construction of buildings*. Followed by those engaged in *site preparation* were 35.4 percent. The establishment engaged in *building completion and finishing* and *electrical installation* were 5.3 and 3.7 percent respectively. The other class of construction industry not mentioned above had rather low proportion each had less than 3.0 percent of the total.

Figure 1 Percentage of construction establishments by class of construction industry



### 2. Size of establishment

Most of them were 75.9 percent with 1 - 5 persons engaged. The establishment with 6 - 10 persons engaged was 17.9 percent. For the establishment with more than 10 persons engaged was 6.2 percent.

Considering by class of construction industry, it was found that most the establishment (more than 50.0 percent) was small size with 1 - 5 persons engaged. Except for those engaged in *construction of roads and railways* and *construction of other civil engineering projects*.

**Table 1 Percentage of construction establishments by size of establishment and class of construction industry**

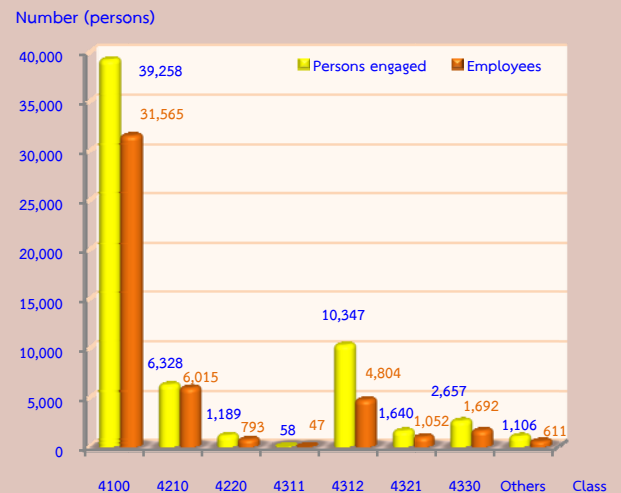
(unit : persons)

Class of construction industry	Total	1 – 5	6 – 10	11 – 15	16 – 20	> 20
<b>Total</b>	<b>100.0</b>	<b>75.9</b>	<b>17.9</b>	<b>3.7</b>	<b>0.9</b>	<b>1.6</b>
4100 Construction of buildings	100.0	58.7	31.8	5.9	1.4	2.2
4210 Construction of roads and railways	100.0	24.8	22.1	22.1	8.9	22.1
4220 Construction of utility projects	100.0	91.0	7.1	1.6	-	0.3
4290 Construction of other civil engineering projects	100.0	50.0	25.0	8.3	16.7	-
4311 Demolition	100.0	72.7	18.2	9.1	-	-
4312 Site preparation	100.0	96.8	2.9	0.2	-	0.1
4321 Electrical installation	100.0	88.9	7.3	2.3	0.4	1.1
4322 Plumbing, heat and air-conditioning installation	100.0	83.7	14.3	2.0	-	-
4329 Other construction installation	100.0	99.6	-	0.4	-	-
4330 Building completion and finishing	100.0	88.3	7.4	2.8	0.6	0.9
4390 Other specialized construction activities	100.0	51.5	36.4	9.1	3.0	-

### 3. Number of persons engaged and employees

In 2013, the workers of the construction establishments in the Northeastern region were totally 62,585 persons. In term of employments, the number of employees totally to 46,576 persons. Considering by class of construction industry, it was found that most of them worked in *construction of buildings*, of 31,565 persons or 67.8 percent. Followed by those worked in *construction roads and railways* 6,015 persons or 12.9 percent. The rest engaged in class of construction industry not mentioned above.

**Figure 2 Number of persons engaged construction establishments by class of construction industry**



**Note :** Persons engaged refer to owners or juristic partnerships, unpaid workers and employees

#### Class of construction industry :

- Class 4100 Construction of buildings
- Class 4210 Construction of roads and railways
- Class 4220 Construction of utility projects
- Class 4311 Demolition
- Class 4312 Site preparation
- Class 4321 Electrical installation
- Class 4330 Building completion and finishing
- Other class i.e. Class 4290 Construction of other civil engineering projects, class 4322 Plumbing, heat and air-conditioning installation and class 4329 Other construction installation, class 4390 Other specialized construction activities

### 4. Remuneration

In 2013, the employees working in construction establishments in the Northeastern region received the total remuneration 3,380.69 million baht or 72,584 baht per persons annually. The employees engaged in *construction of roads and railways* received the highest annual remuneration of 102,589 baht per person. While the establishment engaged in *demolition* the lowest annual remuneration of 57,547 baht per persons.

Figure 3 Remuneration of construction establishments by class of construction industry

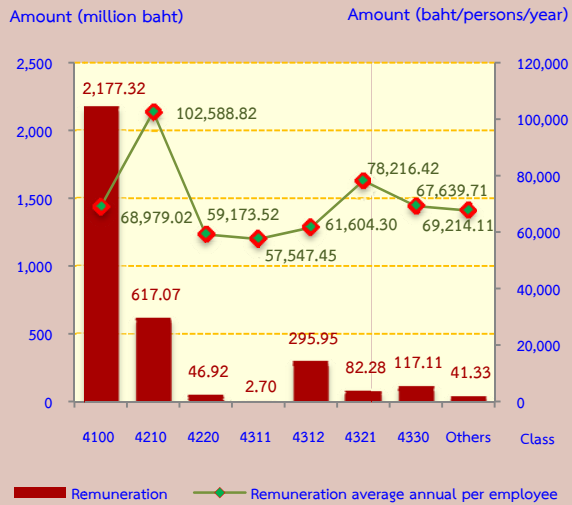
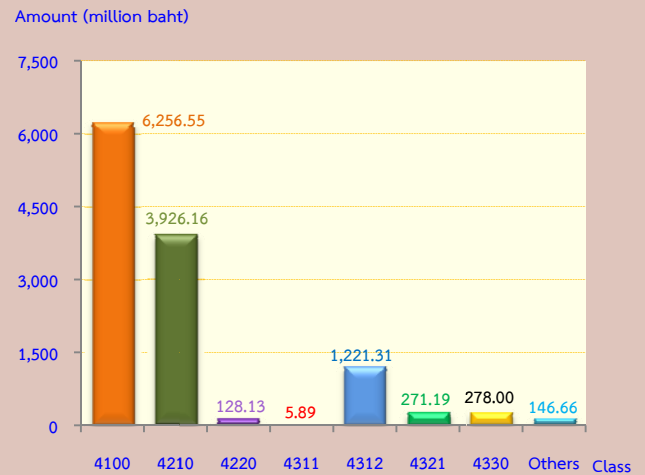


Figure 4 Value added of construction establishments by class of construction industry



### 5. Value of gross output, intermediate consumption and value added

The value of gross output or receipts of construction establishments were totally 35,805.34 million baht. The intermediate consumption and value added were totally 23,571.45 million baht and 12,233.89 million baht respectively. Comparing the value added to value of gross output or receive was 34.2 percent.

For the average value of gross output had 2.79 million baht per establishment and 572,100 baht per persons.

In terms of the average value added, they were 953,800 baht per establishment and 195,500 baht per persons respectively.

Considering by class of construction industry, it was found that most of value added were from *construction of buildings* with the highest proportion (6,256.55 million baht or 51.1 percent). While the establishment engaged in *demolition* had the lowest value added of 5.89 million baht of 0.1 percent.

Value added = value of gross output or receives – intermediate consumption

Value of gross output or receives refer to receipts of establishments in 2013

Intermediate consumption refer to expenditure of construction establishments in 2013

#### Class of construction industry:

- Class 4100 Construction of buildings
- Class 4210 Construction of roads and railways
- Class 4220 Construction of utility projects
- Class 4311 Demolition
- Class 4312 Site preparation
- Class 4321 Electrical installation
- Class 4330 Building completion and finishing
- Other class i.e., Class 4290 Construction of other civil engineering projects, class 4322 Plumbing, heat and air-conditioning installation, class 4329 Other construction installation and class 4390 Other specialized construction activities