

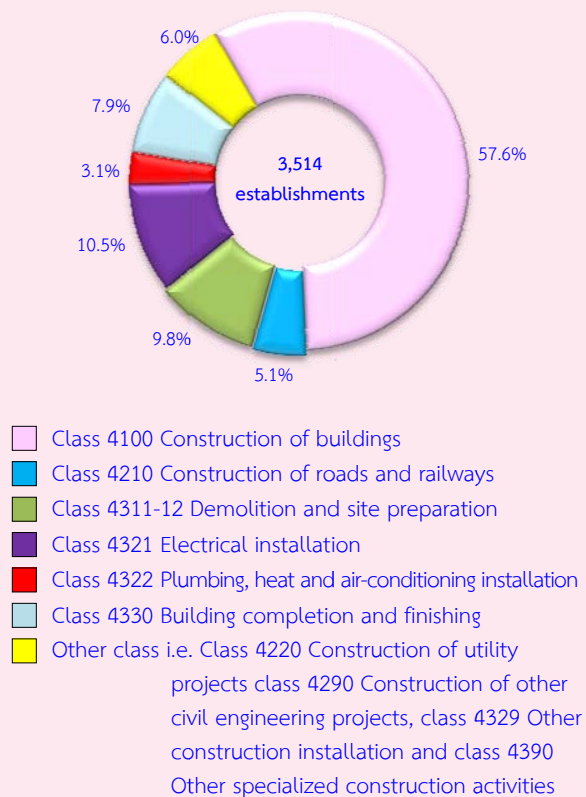
Executive summary

The National Statistical Office (NSO) carried out the 2014 Construction Industry Survey, which is the 4th survey and the NSO planned for conducting this survey every 5 years. The main objective of the survey is to collect basic information data on construction establishments. Data is vital to economic development planning of the country and to private employment planning as well, the survey covered all construction establishments in the Whole Kingdom, which engaged in construction of buildings, civil engineering and specialized construction activities (Section F of The Thailand Standard Industrial Classifications: TSIC 2009). The field work was conducted during June 1 to September 30, 2014. The sample were from 2,246 establishments from totally 3,514 establishments. The data presented in this report was the operation of the construction establishments located **in the Central region** during January 1 to December 31, 2013. The major findings are as follows:

1. Number of establishment

The results of the 2014 Construction Industry in the Central region, it was found that most of them 57.6 percent were engaged in *construction of buildings*. Followed by those engaged in *electrical installation, demolition and site preparation* and *building completion and finishing* were 10.5, 9.8 and 7.9 percent respectively. The other class of construction industry not mentioned above had rather low proportion each had less than 6.0 percent of the total.

Figure 1 Percentage of construction establishments in the Central region by class of construction industry



2. Size of establishment

Most of them were 54.1 percent with 1 - 5 persons engaged. The establishment with 6 - 10 persons engaged was 23.9 percent. For the establishment with more than 10 persons engaged was 22.0 percent.

Considering by class of construction industry, it was found that most the establishment (more than 45.0 percent) was small size with 1 - 5 persons engaged. Except for those engaged in *construction of roads and railways, construction of other civil engineering projects* and *other specialized construction activities*.

Table 1 Percentage of construction establishments in the Central region by size of establishment and class of construction industry

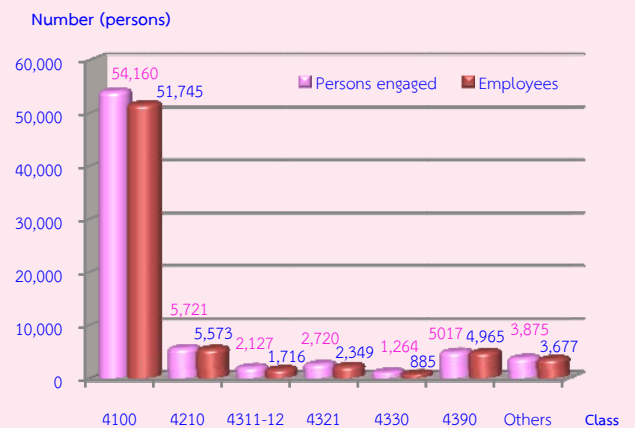
(unit : persons)

Class of construction industry	Total	1 – 5	6 – 10	11 – 15	16 – 20	> 20
Total	100.0	54.1	23.9	9.1	3.2	9.7
4100 Construction of buildings	100.0	47.4	30.6	10.9	3.0	8.1
4210 Construction of roads and railways	100.0	12.4	21.9	19.7	12.9	33.1
4220 Construction of utility projects	100.0	49.3	21.7	4.4	1.4	23.2
4290 Construction of other civil engineering projects	100.0	-	45.4	9.1	18.2	27.3
4311-12 Demolition	100.0	71.3	17.4	4.9	2.3	4.1
4321 Electrical installation	100.0	75.1	11.1	4.9	1.6	7.3
4322 Plumbing, heat and air-conditioning installation	100.0	67.9	10.1	6.4	1.8	13.8
4329 Other construction installation	100.0	67.6	5.4	5.4	-	21.6
4330 Building completion and finishing	100.0	84.2	11.5	1.8	1.1	1.4
4390 Other specialized construction activities	100.0	33.7	15.8	12.6	6.3	31.6

3. Number of persons engaged and employees

In 2013, the workers of the construction establishments in the Central region totally to 74,885 persons. In term of employments, the number of employees totally to 70,911 persons. Considering by class of construction industry, it was found that most of them worked in *construction of buildings*, of 51,745 persons or 73.0 percent. Followed by those worked in *construction roads and railways* 5,573 persons or 7.9 percent. The rest engaged in class of construction industry not mentioned above.

Figure 2 Number of persons engaged construction establishments in Central region by class of construction industry



Note : Persons engaged refer to owners or juristic partnerships, unpaid workers and employees

Class of construction industry :

- Class 4100 Construction of buildings
- Class 4210 Construction of roads and railways
- Class 4311-12 Demolition and site preparation
- Class 4321 Electrical installation
- Class 4330 Building completion and finishing
- Class 4390 Other specialized construction activities
- Other class i.e. class 4220 Construction of utility projects 4290 Construction of other civil engineering projects, class 4322 Plumbing, heat and air-conditioning installation and class 4329 Other construction installation

4. Remuneration

In 2013, the employees working in construction establishments in the Central region received the total remuneration 10,503.09 million baht or 148,116.52 baht per persons annually. The employees engaged in *other specialized construction activities* received the highest annual remuneration of 165,999.27 baht per persons. While the establishment engaged in *building completion and finishing* the lowest annual remuneration of 88,497.27 baht per persons.

Figure 3 Remuneration of construction establishments in Central region by class of construction industry

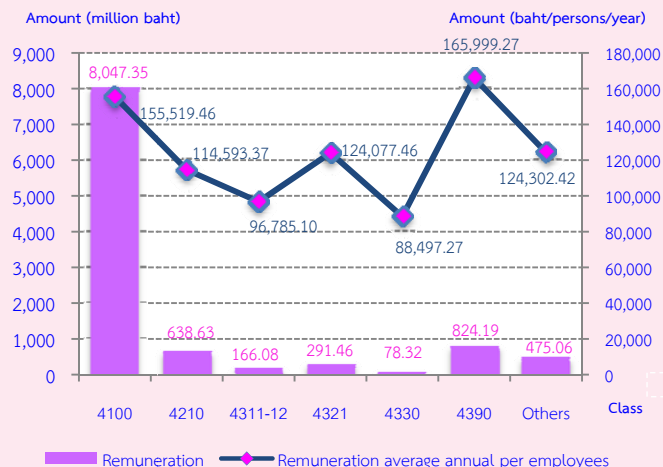
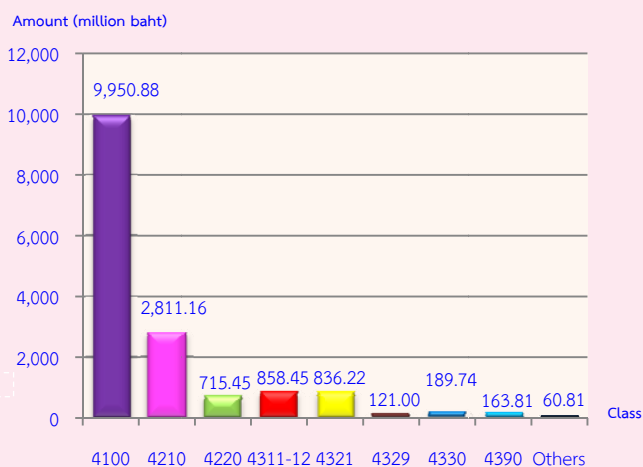


Figure 4 Value added of construction establishments in Central region by class of construction industry



5. Value of gross output, intermediate consumption and value added

The value of gross output or receipts of construction establishments were totally 52,427.79 million baht. The intermediate consumption and value added were totally 34,891.71 million baht and 17,536.08 million baht respectively. Comparing the value added to value of gross output or receive was 33.5 percent.

For the average value of gross output had 14.92 million baht per establishment and 700,100 baht per persons.

In terms of the average value added, they were 4.99 million baht per establishment and 234,200 baht per persons.

Considering by class of construction industry, it was found that most of value added were from *construction of buildings*, (9,950.88 million baht or 56.7 percent). The following were from *construction of roads and railways* and *other specialized construction activities* (2,811.16 million baht or 16.0 percent and 1,489.94 million baht or 8.5 percent respectively). The other class of construction industry had rather low proportion less than 5.0 percent.

Note : Value added = value of gross output or receives – intermediate consumption

Value of gross output or receives refer to receipts of establishments in 2013

Intermediate consumption refer to expenditure of construction establishments in 2013

Class of construction industry:

- Class 4100 Construction of buildings
- Class 4210 Construction of roads and railways
- Class 4220 Construction of utility projects
- Class 4311-12 Demolition and Site preparation
- Class 4321 Electrical installation
- Class 4329 Other construction installation
- Class 4330 Building completion and finishing
- Class 4390 Other specialized construction activities
- Other class i.e., Class 4290 Construction of other civil engineering projects class 4322 Plumbing, heat and air-conditioning installation