

CHAPTER 2

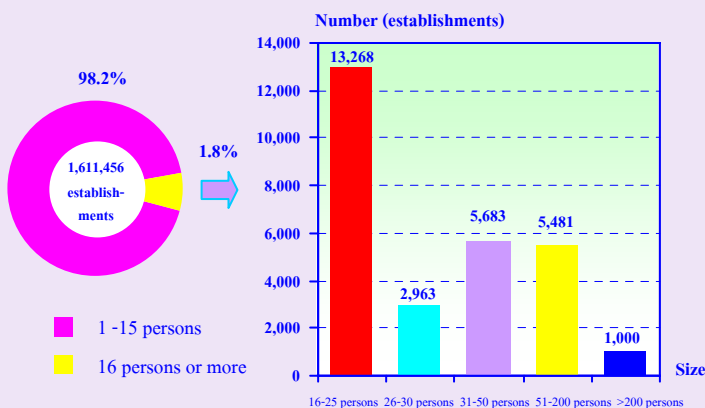
MAJOR FINDINGS

2.1 General information of business trade and services establishments

2.1.1 Number and size of establishments

The results of the 2008 business trade and services survey show that there were in total 1.6 million establishments in Whole Kingdom. Out of these, 1.58 million establishments or about 98.2 percent were small scale establishments, with 1-15 persons. The establishments with more than 15 persons engaged were 28,395 establishments or about 1.8 percent. Of that total, about 13,268 establishments were engaged in establishments with 16-25 persons. For those with 31-50 persons, 51-200 persons and 26-30 persons were about 5,683 establishments 5,481 establishments and 2,963 establishments respectively, while the largest size of establishment (with more than 200 persons engaged) amounted to 1,000 establishments.

Figure A Number of business establishments by size of establishment (number of person engaged)

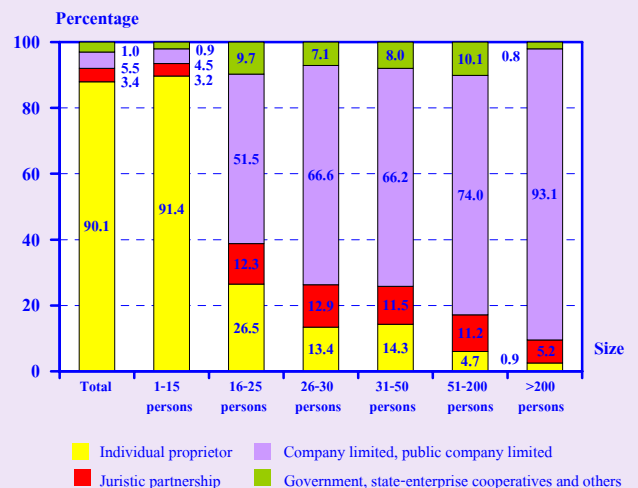


2.1.2 Form of legal organization

Most establishments (about 90.1 percent) were individual proprietor. The establishments as company limited, public company limited and juristic partnership were about 5.5 and 3.4 percent respectively. Those, which were in the form of government, state-enterprise cooperatives and others of about 1.0 percent.

Considering by size of establishments, it was found that the form of individual proprietor was found with higher proportion in smaller establishments than in the bigger size ones. That is, the smallest size with 1-15 persons engaged had the highest proportion, of about 91.4 percent; and the largest size with more than 200 persons engaged had the lowest proportion, of about 0.9 percent. In the other hand, the largest establishments as company limited, public company limited had the highest proportion, of about 93.1 percent, while the smallest size had the lowest proportion, of only 4.5 percent.

Figure B Percentage of business establishments by form of legal organization and size of establishment

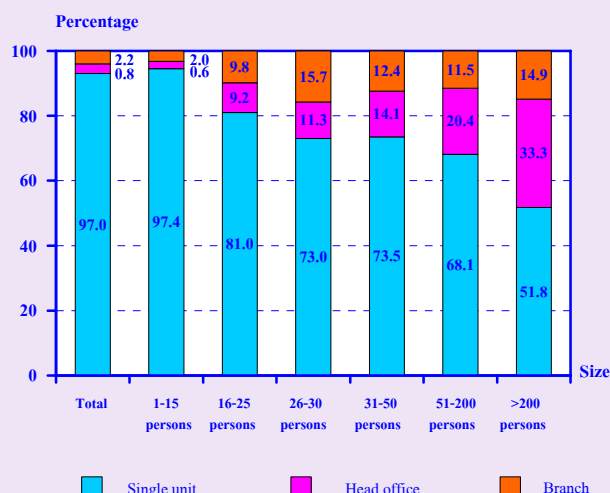


2.1.3 Form of economic organization

The majority of establishments in Whole Kingdom or 97.0 percent was single unit. About 2.2 percent was branch or subsidiary, and the rest of about 0.8 percent was head office.

Considering the form of economic organization by size of establishment, it showed that there was higher proportion of single unit in all sizes of establishment.

Figure C Percentage of business establishments by form of economic organization and size of establishment



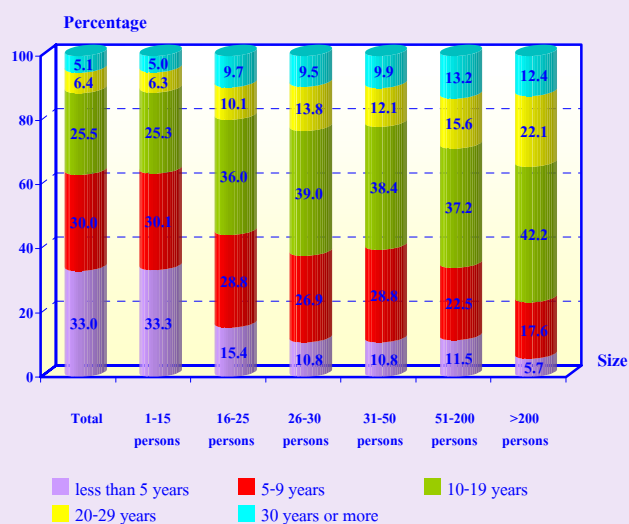
2.1.4 Period of operation

Most of the establishments (about 63.0 percent) have operated their business less than 10 years. The establishments operated their business for 10-19 years were about 25.5 percent. Those with operation for 20-29 years and 30 years or more were about 6.4 percent and 5.1 percent respectively.

Considering by size of establishment, it was found that more than half of the establishments, with 16 persons engaged or more, have operated

their business for 10 years or more. Moreover most establishments, with 1-15 persons engaged (63.4 percent) have operated their business less than 10 years.

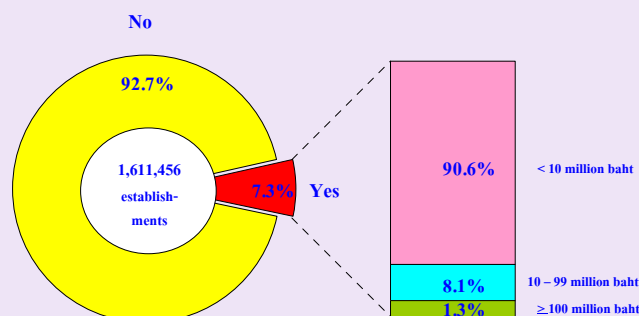
Figure D Percentage of business establishments by period of operation and size of establishment



2.1.5 Register capital

The number of business establishments with registered capital amounted to 117,727 establishments or about 7.3 percent of the total. Most of them (about 90.6 percent) had less than 10 million baht of register capital. Those with 10-99 million baht of register capital, were about 8.1 percent. The establishments with 100 million baht of register capital and over were about 1.3 percent.

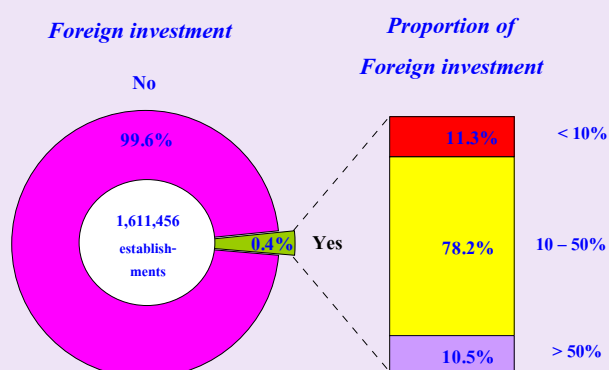
Figure E Percentage of business establishments by register capital



2.1.6 Foreign investment or share holding

The majority of business establishments in Whole Kingdom or 99.6 percent had no foreign investment or share holding, while the rest of about 0.4 percent did. Out of these, about 78.2 percent was 10-50 percent of share holding and about 11.3 percent was less than ten percent of share holding. The rest of about 10.5 percent was over fifty percent of share holding.

Figure F Percentage of business establishments by foreign investment or share holding



2.1.7 Division of business industry

Considering the division of business industry, table A shows that most establishments (about 48.0 percent) were engaged in *retail trade, (except of motor vehicles and motorcycles), repair of personal and household goods*. Followed by those engaged in *hotels and restaurants* and *sale, maintenance and repair of motor vehicles and motorcycles, retail sale of automotive fuel*, accounted for 15.7 percent and 11.1 percent respectively. The other divisions of business industry not mentioned above, each one had rather low proportion less than 10.0 percent, especially establishments engaged in *research and development* had the proportion less than 0.1 percent.

Table A Number and percentage of business establishments by division of business industry

Division of business industry	Number	%
Total	1,611,456	100.0
Sale, maintenance and repair of motor vehicles and motorcycles, retail sale of automotive fuel	178,720	11.1
Wholesale trade and commission trade, except of motor vehicles and motorcycles	74,624	4.6
Retail trade, (except of motor vehicles and motorcycles), repair of personal and household goods	772,534	48.0
Hotels and restaurants	253,383	15.7
Real estate activities	75,928	4.7
Renting of machinery and equipment without operator and of personal and household goods	21,175	1.3
Computer and related activities	6,234	0.4
Research and development	52	-
Other business activities	42,486	2.6
Recreational, cultural and sporting activities	28,581	1.8
Other service activities	157,739	9.8

Note : - Nil of zero or negligible amount.

2.2 Principal statistics by size of establishment and division of business industry

2.2.1 Persons engaged and remuneration

1) Number of persons engaged

Focusing on the number of persons engaged, table B shows that, in 2007, there were in total 5.9 million persons engaged in the business establishments in Whole Kingdom. Most of them were engaged in small scale establishments with 1 – 15 persons, of about 4.2 million persons or 71.9 percent.

Considering by division of business industry, it was found that most of them engaged in *retail trade, (except of motor vehicles and motorcycles), repair of personal and household goods*, of about 2.2 million persons or 37.4 percent. Followed by those engaged in *hotels and restaurants*, of about 20.2 percent, The establishments engaged in *sale, maintenance and repair of motor vehicles and motorcycles retail sale of automotive fuel* and *wholesale trade and commission trade, except of motor vehicles and motorcycles*, of about 11.2 percent and 10.4 percent respectively. The other divisions of business industry not mentioned above, each one had rather low proportion of persons engaged, less than 6.5 percent of the total.

2) Number of employees

In terms of employment, the number of employees amounted to 3.3 million persons. Most of them engaged in small scale establishments with 1-15 persons, of about 1.8 million persons or 52.9 percent.

Considering by division of business industry, it showed that the employees engaged in *retail trade, (except of motor vehicles and motorcycles), repair of personal and household*

goods, and hotels and restaurants were about 26.3 percent and 22.7 percent respectively. Followed by those engaged in *wholesale trade and commission trade, except of motor vehicles and motorcycles* and *sale, maintenance and repair of motor vehicle and motorcycles, retail sale of automotive fuel*, of about 14.8 percent and 12.3 percent respectively. The other divisions of business industry not mentioned above, each one had rather low proportion of employees, less than 10.0 percent.

3) Remuneration

The employees engaged in business establishments in Whole Kingdom received the total remuneration of about 394.5 billion baht or about 118,433 baht per person per annum. The employees engaged in the large scale (more than 200 persons) and the establishments with 51-200 persons received the annual remuneration with close proportion, of about 168,123 baht and 163,666 baht per person respectively. The employees worked in the other sizes, each one received the annual remuneration less than 140,000 baht per person.

Considering by division of business industry, it was found that the employees engaged in *research and development* received the highest annual remuneration, of about 341,559 baht per person. Followed by those engaged in *computer and related activities* and *wholesale trade and commission trade, except of motor vehicles and motorcycles* received the annual remuneration, of about 233,443 baht per person and 176,724 baht per person respectively. The employees engaged in *other service activities* received the lowest annual remuneration, of about 79,673 baht per person.

Table B Persons engaged, employees, remuneration and average annual remuneration per employee by size of establishment and division of business industry

Size of establishment/ Division of business industry	Persons engaged		Employees		Remuneration	
	Number	%	Number	%	Value (Thousand baht)	Average annual remuneration per employee (Baht)
Total	5,886,322	100.0	3,330,929	100.0	394,491,864.8	118,433.0
Size of establishment						
1 – 15 Persons	4,234,449	71.9	1,760,072	52.9	153,322,879.9	87,111.7
16 – 25 Persons	263,768	4.5	242,684	7.3	29,211,822.7	120,369.8
26 – 30 Persons	82,874	1.4	77,974	2.3	9,814,708.9	125,871.6
31 – 50 Persons	221,637	3.8	208,041	6.2	28,985,342.7	139,325.2
51 – 200 Persons	500,612	8.5	460,691	13.8	75,399,298.2	163,665.7
More than 200 persons	582,982	9.9	581,467	17.5	97,757,812.4	168,122.7
Division of business industry						
Sale, maintenance and repair of motor vehicles and motorcycles, retail sale of automotive fuel	659,045	11.2	410,436	12.3	48,252,099.5	117,563.0
Wholesale trade and commission trade, except of motor vehicles and motorcycles	611,994	10.4	492,292	14.8	86,999,828.0	176,724.0
Retail trade, (except of motor vehicles and motorcycles), repair of personal and household goods	2,199,179	37.4	876,431	26.3	86,881,957.6	99,131.5
Hotels and restaurants	1,187,745	20.2	755,081	22.7	67,612,488.7	89,543.4
Real estate activities	254,419	4.3	159,707	4.8	23,032,213.8	144,215.4
Renting of machinery and equipment without operator and of personal and household goods	73,034	1.3	41,226	1.2	3,940,015.4	95,571.1
Computer and related activities	32,250	0.5	24,864	0.7	5,804,336.9	233,443.4
Research and development	1,514	-	1,504	-	513,704.9	341,559.1
Other business activities	372,138	6.3	318,891	9.6	49,590,084.5	155,507.9
Recreational, cultural and sporting activities	177,504	3.0	128,589	3.9	12,152,393.4	94,505.7
Other service activities	317,500	5.4	121,908	3.7	9,712,742.1	79,672.7

2.2.2 Receipts, expenditures and value added

Table C shows value of receipts, expenditures and value added of business establishments in Whole Kingdom, it was found that there were in total 8.2 million million baht of receipts, 6.5 million million baht of expenditures and 1.8 million million baht of value added. Comparing the value added to receipts, it was about 21.5 percent. Considering by size of establishment, it showed that the small establishments, with 1-15 persons had the highest proportion of about 37.1 percent of receipts, 32.7 percent of expenditures and 53.4 percent of value added respectively. However, the highest value added to receipts was from the small establishments, of about 30.9 percent.

Considering by division of business industry, it shows that most of receipts and expenditures were from *wholesale trade and commission trade, except of motor vehicles and motorcycles* of about 34.9 percent and 38.9 percent respectively. Followed by those engaged in *sale, maintenance and repair of motor vehicles and motorcycles, retail sale of automotive fuel* which had the proportion, of about 26.3 percent and 27.9 percent respectively. The establishments engaged in *retail trade, (except of motor vehicles and motorcycles), repair of personal and household goods* accounted for 25.3 percent of receipts and 24.5 percent of expenditures respectively. In terms of value added, the establishments engaged

were from *retail trade, (except of motor vehicles and motorcycles), repair of personal and household goods* had the highest proportion, of about 28.3 percent. Followed by those engaged in *wholesale trade and commission trade, except of motor vehicles and motorcycles* and *sale, maintenance and repair of motor vehicles and motorcycles, retail sale of automotive fuel* which had the close proportion of about 20.3 percent and 20.2 percent respectively. The establishment engaged in *hotels and restaurants* and *real estate activities* accounted for 10.9 percent and 9.3 percent respectively. The other divisions of business industry had relatively low proportion, each one accounted for less than 6.0 percent.

Comparing the value added to receipts by division of business industry, it was found that the establishments engaged in *other service activities* contributed the highest proportion of value added to receipts, of about 59.2 percent. Followed by those engaged in *real estate activities* accounted for 51.9 percent. For the establishments engaged in *renting of machinery and equipment without operator and of personal and household goods* and *hotels and restaurants*, there were close proportions, of about 49.4 percent and 49.2 percent respectively. The establishments engaged in *wholesale trade and commission trade, except of motor vehicles and motorcycles* had the lowest proportion of value added to receipts, of about 12.5 percent.

Table C Receipts, expenditures, value added and value added per receipt by size of establishment and division of business industry

Size of establishment/ Division of business industry	Receipts		Expenditures		Value added		Value added per receipt (%)
	Value (Million baht)	%	Value (Million baht)	%	Value (Million baht)	%	
Total	8,230,041.3	100.0	6,462,779.8	100.0	1,767,261.5	100.0	21.5
Size of establishment							
1 – 15 Persons	3,055,148.2	37.1	2,111,729.8	32.7	943,418.4	53.4	30.9
16 – 25 Persons	851,864.6	10.3	723,353.6	11.2	128,511.0	7.2	15.1
26 – 30 Persons	178,073.8	2.2	144,683.8	2.3	33,390.0	1.9	18.8
31 – 50 Persons	763,321.6	9.3	654,240.0	10.1	109,081.6	6.2	14.3
51 – 200 Persons	1,702,042.8	20.7	1,436,842.3	22.2	265,200.5	15.0	15.6
More than 200 persons	1,679,590.3	20.4	1,391,930.3	21.5	287,660.0	16.3	17.1
Division of business industry							
Sale, maintenance and repair of motor vehicles and motorcycles, retail sale of automotive fuel	2,163,554.7	26.3	1,806,175.7	27.9	357,379.0	20.2	16.5
Wholesale trade and commission trade, except of motor vehicles and motorcycles	2,872,128.9	34.9	2,513,362.5	38.9	358,766.4	20.3	12.5
Retail trade, (except of motor vehicles and motorcycles), repair of personal and household goods	2,084,815.8	25.3	1,584,802.2	24.5	500,013.6	28.3	24.0
Hotels and restaurants	392,656.5	4.8	199,528.8	3.1	193,127.7	10.9	49.2
Real estate activities	317,166.6	3.9	152,651.0	2.4	164,515.6	9.3	51.9
Renting of machinery and equipment without operator and of personal and household goods	34,480.8	0.4	17,465.4	0.3	17,015.4	1.0	49.4
Computer and related activities	32,753.4	0.4	17,458.8	0.3	15,294.6	0.9	46.7
Research and development	2,355.9	-	1,420.1	-	935.8	0.1	39.7
Other business activities	203,631.1	2.5	109,157.8	1.7	94,473.3	5.3	46.4
Recreational, cultural and sporting activities	76,055.8	0.9	40,175.1	0.6	35,880.7	2.0	47.2
Other service activities	50,441.8	0.6	20,582.4	0.3	29,859.4	1.7	59.2

2.2.3 Average value of receipts and average value added per establishment

Table D shows that the business establishments in Whole Kingdom had average value of receipts and average value added per establishment, of about 5.1 million baht and 1.1 million baht respectively. Considering by size of establishment, it was found that the establishments with more than 200 persons had the highest average value of receipts of about 1.7 million million baht per establishment. Followed by those with 51-200 persons had about 310.5 million baht. The establishments with 1-15 persons had the lowest average value of receipts, of about 1.9 million baht per establishment. In terms of the average value added per establishment, it showed that the average value added per person engaged varied to size of establishment. That is, the largest size of establishments contributed the highest average value added, of about 287.7 million baht per establishment; and the smallest size of establishments had the lowest average value added, of about 595,900 baht per establishment.

Considering by division of business industry, it was found that the establishments engaged in *research and development* had the highest average value of receipts and average value added per establishment, of about 45.3 million baht and 18.0 million baht respectively. Followed by those engaged in *wholesale trade and commission trade, except of motor vehicles and motorcycles*, of about 38.5 million baht and 4.8 million baht respectively. However, those engaged in *other service activities* had the lowest

average value of receipts and average value added per establishment, of about 319,800 baht and 189,300 baht respectively.

2.2.4 Average value of receipts and average value added per person engaged

As a result, the average value of receipts and average value added per person engaged of business establishments in Whole Kingdom amounted to 1.4 million baht and 300,200 baht respectively. Considering by size of establishment, it was found that the establishments with 31-50 and 51-200 persons had the highest and close average value of receipts per person engaged, of about 3.44 million baht and 3.40 million baht respectively. In terms of average value added per person engaged, the establishments with 51-200 persons had the highest average value added per person engaged, of about 529,700 baht. The small establishments with 1-15 persons had the lowest average value of receipts and average value added per person engaged, of about 721,500 baht and 222,800 baht respectively.

For the average value of receipts and average value added per person engaged by division of business industry, it showed that the establishments engaged in *wholesale trade and commission trade, (except of motor vehicles and motorcycles)* had the highest average value of receipts of about 4.7 million baht per person. For the establishments engaged in *real estate activities* had the highest average value added of about 646,600 baht per person. However, the establishments engaged in *other service activities* had the lowest average value of receipts and average value added per person engaged, of about 158,900 baht and 94,100 baht respectively.

Table D Average value of receipts and average value added per establishment and average value of receipts and average value added per person engaged by size of establishment and division of business industry

(In thousand baht)

Size of establishment/ Division of business industry	Average value of receipts		Average value added	
	Per establishment	Per person engaged	Per establishment	Per person engaged
Total	5,107.2	1,398.2	1,096.7	300.2
Size of establishment				
1 – 15 Persons	1,929.9	721.5	595.9	222.8
16 – 25 Persons	64,204.5	3,229.6	9,685.8	487.2
26 – 30 Persons	60,099.2	2,148.7	11,269.0	402.9
31 – 50 Persons	134,316.6	3,444.0	19,194.4	492.2
51 – 200 Persons	310,535.1	3,399.9	48,385.4	529.7
More than 200 persons	1,679,590.3	2,881.0	287,660.0	493.4
Division of business industry				
Sale, maintenance and repair of motor vehicles and motorcycles, retail sale of automotive fuel	12,105.8	3,282.9	1,999.7	542.3
Wholesale trade and commission trade, except of motor vehicles and motorcycles	38,488.0	4,693.1	4,807.7	586.2
Retail trade, (except of motor vehicles and Motorcycles), repair of personal and household goods	2,698.7	948.0	647.2	227.4
Hotels and restaurants	1,549.7	330.6	762.2	162.6
Real estate activities	4,177.2	1,246.6	2,166.7	646.6
Renting of machinery and equipment without operator and of personal and household goods	1,628.4	472.1	803.6	233.0
Computer and related activities	5,254.0	1,015.6	2,453.4	474.3
Research and development	45,305.8	1,556.1	17,996.2	618.1
Other business activities	4,792.9	547.2	2,223.6	253.9
Recreational, cultural and sporting activities	2,661.1	428.5	1,255.4	202.1
Other service activities	319.8	158.9	189.3	94.1

2.3 Data comparison among regions

Comparison of the operation information of business establishments with 1 person engaged or more among regions (Table E), the major findings are as follows:

Number of establishments : Most establishments (about 404,203 establishments or 25.1 percent) were located in Northeastern region. The close proportions about 17.6 percent and 17.3 percent were located in Northern and Central regions respectively. About 16.2 percent and 15.0 percent were located in Southern region and Bangkok respectively. In the Vicinity, there was the lowest proportion, of about 8.8 percent of the total establishments in the Whole Kingdom.

Number of persons engaged : Most persons engaged (about 1.6 million persons or 27.5 percent) working in establishments located in Bangkok. The workers of establishments located in Northeastern and Central region were about 20.1 percent and 15.3 percent respectively. In Southern and Northern regions, there were about 14.7 percent and 13.5 percent respectively. The workers working in establishments in the Vicinity had the lowest proportion, of about 8.9 percent.

Number of employees, it was found that most employees (about 1.3 million persons or 39.4 percent) were in Bangkok. In Central, Northeastern and Southern regions, there were close proportions of employees, of about 13.5 percent, 13.2 percent and 13.1 percent respectively. While those in Northern region and Vicinity, there were about 11.1 percent and 9.7 percent respectively.

Remuneration, it shows that the employees in Bangkok received the highest annual remuneration, of about 174,705 baht per person. Followed by those in the Vicinity and Central region received the annual remuneration, of about 113,276 baht and 87,002 baht per person respectively. While those in Northeastern region received the lowest annual remuneration, of about 62,382 baht per person.

Value of receipts, it was found that the establishments in Bangkok had the highest average value of receipts, of about 16.1 million baht per establishment and 2.4 million baht per person. Those in Northeastern region had the lowest average value of receipts, of about 2.1 million baht per establishment and 710,000 baht per person.

Expenditures, it was found that the establishments in Bangkok had the highest average expenditures, of about 12.9 million baht per establishment and 1.9 million baht per person. Followed by those in the Vicinity had about 5.6 million baht of average expenditures per establishment and 1.5 million baht of average expenditures per person. While those in Northeastern region had the lowest average expenditures per establishment and per person engaged of about 1.4 million baht and 464,800 baht respectively.

Value added : Comparing the average value added per establishment among regions, it was noticed that establishments in Bangkok provided the highest average value added per establishment, of about 3.1 million baht.

Followed by those, located in the Vicinity and Northeastern region had the average value added per establishment, of about 1.5 million baht and 718,500 baht respectively. Establishments located in Northern region had the lowest average value added per establishment, of about 541,300 baht.

In terms of average value added per person engaged, the establishments located in

Bangkok had the highest average value added of about 471,000 baht per person. Followed by those located in the Vicinity and Northeastern region had the average value added per person engaged, of about 395,700 baht and 245,200 baht respectively. While those in Northern region had the lowest average value added of about 193,200 baht per person.

Table E Principal data of business establishments by region

Data items	Whole Kingdom	Bangkok	Vicinity	Central region	Northern region	Northeastern region	Southern region
Number of establishments (Establishment)	1,611,456 (100.0)	241,941 (15.0)	142,403 (8.8)	278,848 (17.3)	283,238 (17.6)	404,203 (25.1)	260,823 (16.2)
Number of persons engaged (Person)	5,886,322 (100.0)	1,617,031 (27.5)	526,237 (8.9)	901,910 (15.3)	793,681 (13.5)	1,184,302 (20.1)	863,161 (14.7)
<i>Average per establishment (Person)</i>	3.6	6.7	3.7	3.2	2.8	2.9	3.3
Number of employees (Person)	3,330,929 (100.0)	1,311,576 (39.4)	322,048 (9.7)	448,287 (13.5)	371,056 (11.1)	440,513 (13.2)	437,449 (13.1)
<i>Average per establishment (Person)</i>	2.1	5.4	2.3	1.6	1.3	1.1	1.7
Remuneration (Million Baht)	394,491.8	229,139.1	36,480.4	39,002.0	27,393.3	27,479.9	34,997.1
<i>Average annual per employee (Baht)</i>	118,433.0	174,705.1	113,276.2	87,002.4	73,825.2	62,381.7	80,002.7
Value of receipts (Million Baht)	8,230,041.3	3,893,516.8	998,991.3	889,472.7	890,983.4	840,875.3	716,201.8
<i>Average per establishment (Thousand Baht)</i>	5,107.2	16,092.8	7,015.2	3,189.8	3,145.7	2,080.3	2,745.9
<i>Average per person engaged (Thousand Baht)</i>	1,398.2	2,407.8	1,898.4	986.2	1,122.6	710.0	829.7
Expenditures (Million Baht)	6,462,779.8	3,131,975.7	790,784.3	704,975.3	737,675.3	550,448.0	546,921.2
<i>Average per establishment (Thousand Baht)</i>	4,010.5	12,945.2	5,553.1	2,528.2	2,604.4	1,361.8	2,096.9
<i>Average per person engaged (Thousand Baht)</i>	1,097.9	1,936.9	1,502.7	781.6	929.4	464.8	633.6
Value added (Million Baht)	1,767,261.5	761,541.1	208,207.0	184,497.5	153,308.0	290,427.3	169,280.6
<i>Average per establishment (Thousand Baht)</i>	1,096.7	3,147.6	1,462.1	661.6	541.3	718.5	649.0
<i>Average per person engaged (Thousand Baht)</i>	300.2	471.0	395.7	204.6	193.2	245.2	196.1

Note : Figures in the brackets are percentage.

2.4 Data comparison of business

establishments between 2005 and 2007

Comparing the results of the Business Trade and Services Survey in 2007 and 2005, of which the operation periods were of the years in 2006 and 2004. It appeared that the number of business establishments with one person engaged or more in Whole Kingdom increased by 33.6 percent, resulting in an increase of persons engaged by 33.4 percent. However, the average number of persons engaged per establishment decreased by 2.7 percent.

In terms of employment, the number of employees increased from 2.6 million persons to 3.3 million persons or increased by 26.6 percent. Moreover, the annual remuneration increased by 30.7 percent.

For the value of receipts and expenditures, it grew by 26.3 percent and 26.0 percent respectively, the same as value added of business establishments in Whole Kingdom which increased by 27.5 percent.

Table F Principal data of business establishments in 2005 and 2007

Data items	2005 ^{1/}	2007 ^{2/}	% Change
Number of establishments (Establishments)	1,206,242	1,611,456	33.6
Number of persons engaged (Person)	4,413,102	5,886,322	33.4
<i>Average per establishment (Person)</i>	3.7	3.6	-2.7
Number of employees (Person)	2,631,378	3,330,929	26.6
<i>Average per establishment (Person)</i>	2.2	2.1	-4.6
Remuneration (Million baht)	301,840.3	394,491.8	30.7
<i>Average annual per employee (Baht)</i>	114,708.1	118,433.0	3.3
Receipts (Million baht)	6,515,144.3	8,230,041.3	26.3
<i>Average per establishment (Thousand baht)</i>	5,401.2	5,107.2	-5.4
<i>Average per person engaged (Thousand baht)</i>	1,476.3	1,398.2	-5.3
Expenditures (Million baht)	5,129,057.6	6,462,779.8	26.0
<i>Average per establishment (Thousand baht)</i>	4,252.1	4,010.5	-5.7
<i>Average per person engaged (Thousand baht)</i>	1,162.2	1,097.9	-5.5
Value added (Million baht)	1,386,086.8	1,767,261.5	27.5
<i>Average per establishment (Thousand baht)</i>	1,149.1	1,096.7	-4.6
<i>Average per person engaged (Thousand baht)</i>	314.1	300.2	-4.4

Note : ^{1/} The 2006 Business Trade and Services Survey, Whole Kingdom

Coverage : The business establishments with at least one person engaged, located in fixed premises in municipal areas and non-municipal areas, forming as sub-district administration organization in Whole Kingdom

^{2/} The 2008 Business Trade and Services Survey, Whole Kingdom

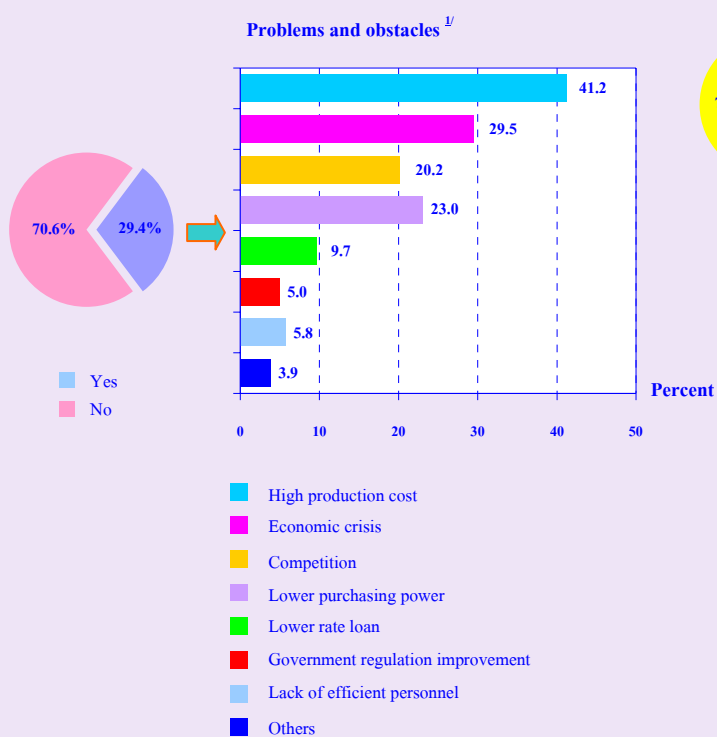
Coverage : The business establishments with at least one person engaged, located in fixed premises in municipal areas and non-municipal areas in Whole Kingdom

2.5 Opinion and recommendations of establishments

2.5.1 Problems and obstacles of establishments

About 29.4 percent of business establishments responded their problems and obstacles. Of these, 41.2 percent was suffered from a higher production cost, 29.5 percent from economic crisis, 23.0 percent from lower purchasing power and 20.2 percent from competition etc.

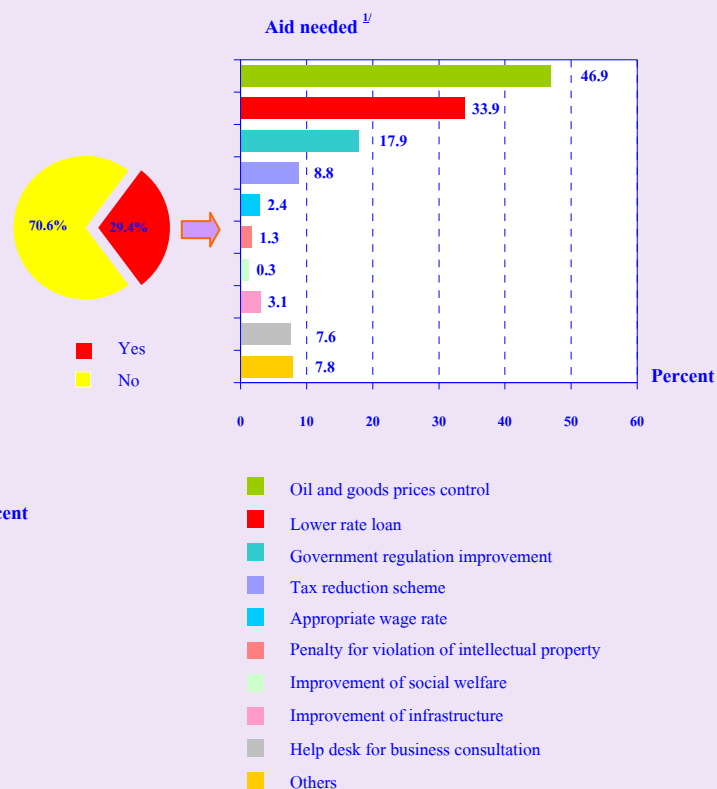
Figure G Percentage of problems and obstacles of establishment



2.5.2 Aid needed from the government

About 29.4 percent of business establishments expressed their opinion on aid needed from the government. Of these, about 46.9 percent needed for oil and goods prices control, 33.9 percent needed for oil and goods prices control, 33.9 percent required lower rate loan, 17.9 percent asked for government regulation improvement etc.

Figure H Percentage of aid needed from the government



Note : ^{1/} Can respond more than one choice