

EXECUTIVE SUMMARY

The National Statistical Office (NSO) carried out the Business trade and Services Census every two years. The objectives of the survey is to collect basic business information to be used by both public and private sectors for policy formulation and planning development. The survey covered business establishments with at least one person engaged in the economic activity and classified according to the Thailand Standard Industrial Classification (TSIC – 2009), i.e. *wholesale trade, retail trade, accommodation, food and beverage service activities, information and communication, real estate activities, professional, scientific and technical activities, administrative and support service activities, art, entertainment and recreation and other service activities* throughout the country.

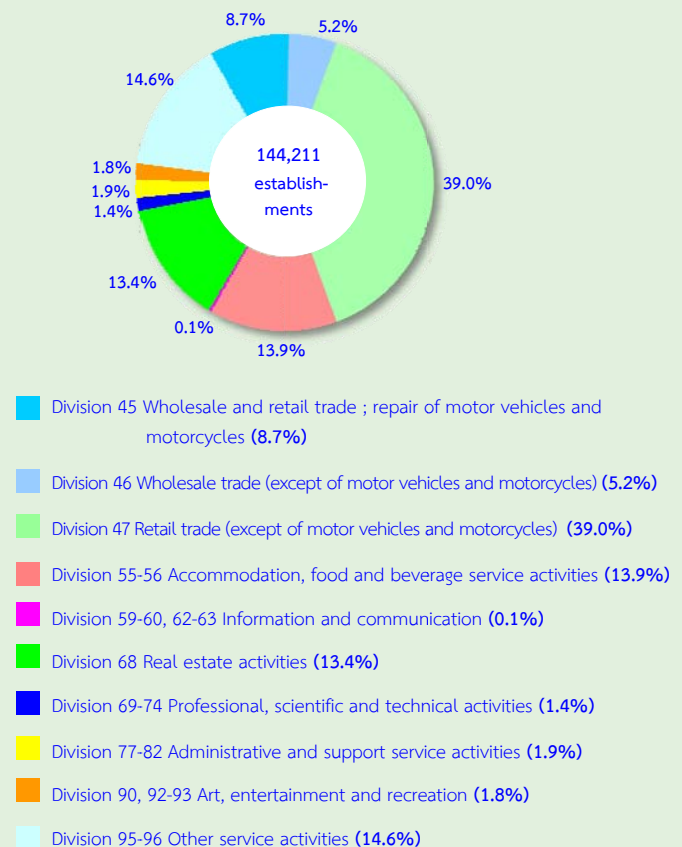
In conducting the 2014 business trade and services survey, the total number of sample establishments in Vicinity were 5,685 establishments. The data presented in the report was the information on business operation in 2013 (January 1 to December 31, 2013). The summary information of Vicinity is as follows :

1. Number of establishments by division of business industry

The survey results showed that there were in total 144,211 establishments in Vicinity. Most of them (about 39.0 percent) were engaged in *retail trade (except of motor vehicles and motorcycles)*. This was followed by those engaged in *other service activities* were about 14.6 percent. The business establishments engaged in *accommodation, food and beverage* and *real estate activities* had the close proportion of about 13.9 percent and 13.4 percent respectively. Establishments engaged in *wholesale and retail trade; repair of motor vehicles and motorcycles* and *wholesale*

trade (except of motor vehicles and motorcycles), were about 8.7 percent and 5.2 percent respectively. The other divisions of business industry not mentioned above had rather low proportion; each division had less than 2.0 percent of the total.

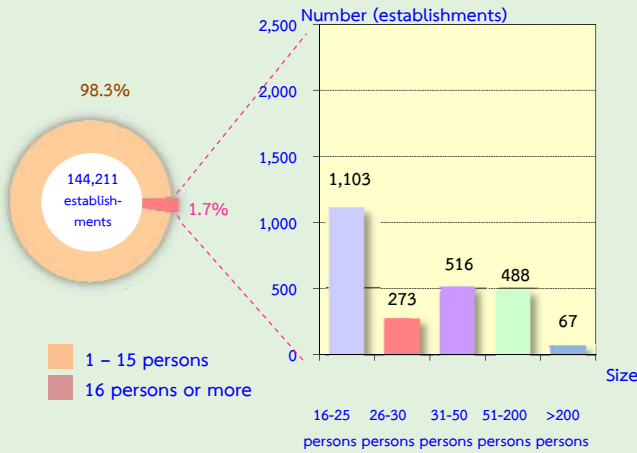
Figure 1 Percentage of business establishments by division of business industry



2. Size of establishment

The size of establishments specified by number of person engaged, most of them (about 141,764 establishments or 98.3 percent) were establishments with 1-15 persons engaged. Those with more than 16 persons engaged were about 2,447 establishments or 1.7 percent. Of this number, the establishments with 16-25 persons, 31-50 persons, 51-200 persons, and 26-30 persons amounted to 1,103 establishments, 516 establishments, 488 establishments and 273 establishments respectively. The establishments with more than 200 persons engaged were about 67 establishments.

Figure 2 Number of business establishments by size of establishment

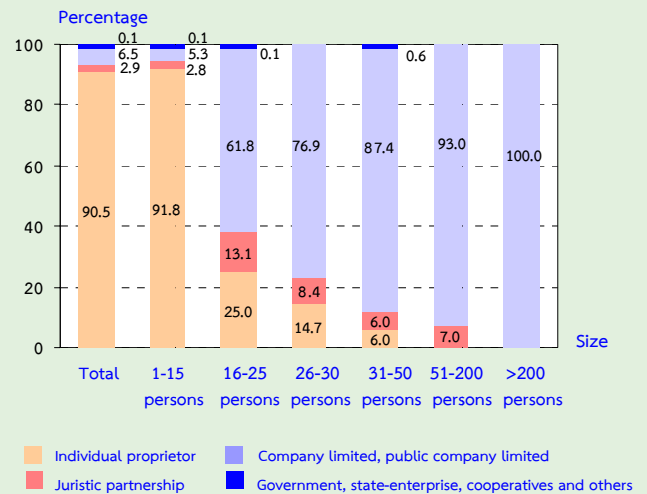


3. Form of legal organization

Most of establishments (about 90.5 percent) were individual proprietor. This was followed by those in the form of company limited or public company limited and juristic partnership had the proportion, of about 6.5 percent and 2.9 percent respectively. The establishments which were in the form of government, state-enterprise, cooperatives and others, of about 0.1 percent.

Considering by size of establishment, it was found a high proportion of the establishments with 1-15 persons engaged (about 91.8 percent) which was in the form of individual proprietor. Meanwhile, the establishments with 16 persons and over was in the form of company limited or public company limited with higher proportion than the other one and varied in size of establishments : the establishments with 16-25 persons, 26-30 persons, 31-50 persons, and 51-200 persons had the proportion of about 61.8 percent, 76.9 percent, 87.4 percents and 93.0 percent respectively. For all the establishments with more than 200 persons engaged was in the form of company limited or public company limited.

Figure 3 Percentage of business establishments By form of legal organization and size of establishment

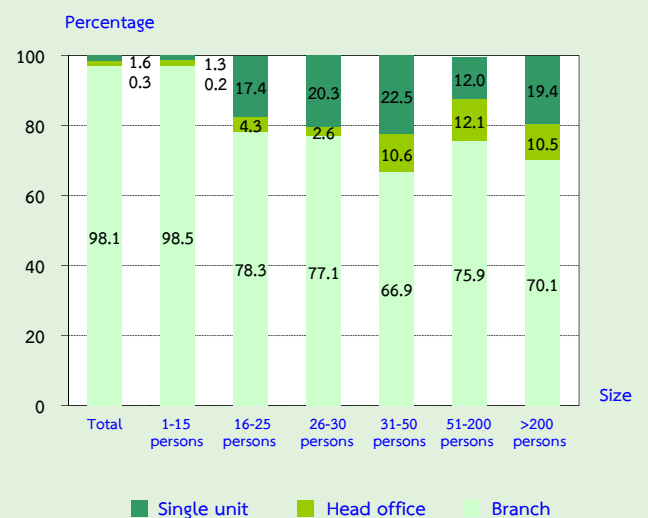


4. Form of economic organization

The majority of business establishments in Vicinity or 98.1 percent were in the form of single unit. About 1.6 percent was an office branch or subsidiary, and the rest of about 0.3 percent was a head office.

Considering the form of economic organization by size of establishment, it showed that the establishments with 1-15 persons were single unit, of about 98.5 percent. While the other sizes were single unit about 70.0-80.0 percent, except the establishments with 31-50 persons had the proportion of about 66.9 percent.

Figure 4 Percentage of business establishments by form of economic organization and size of establishment

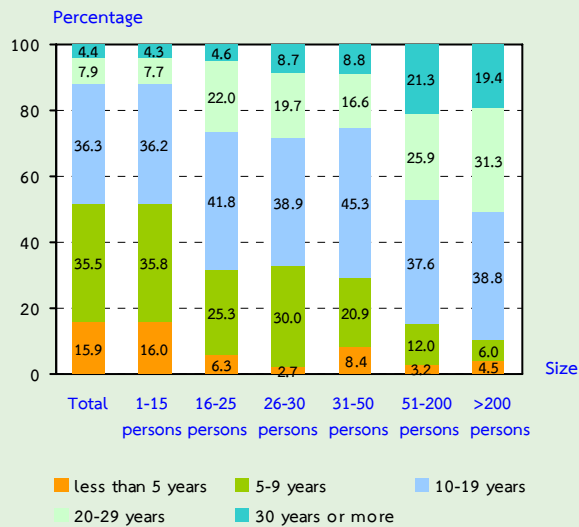


5. Period of operation

Most of establishments (about 36.3 percent) have operated their business for 10-19 years. This was followed by those operated their business for 5-9 years, of about 35.5 percent. The establishments operated their business less than 5 years and 20-29 years were about 15.9 percent and 7.9 percent respectively. Those with their operation business for 30 years or more were about 4.4 percent.

Considering by size of establishment, it was found that more than 80.0 percent in all sizes have operated their business for 5 years or more.

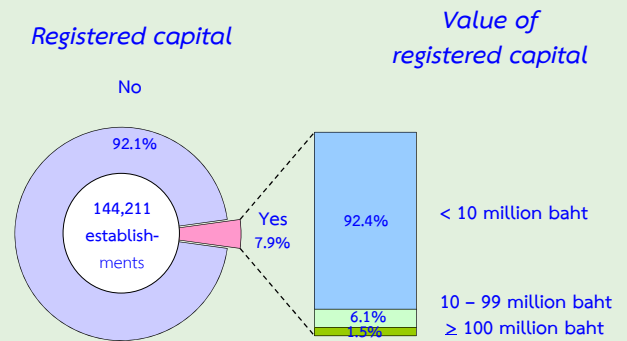
Figure 5 Percentage of business establishments by period of operation and size of Establishment



6. Registered capital

The number of business establishments in Vicinity with registered capital amounted to 11,394 establishments or about 7.9 percent of the total. Most of them (about 92.4 percent) had less than 10 million baht of registered capital. Those with 10-99 million baht of registered capital were about 6.1 percent. The establishments with 100 million baht of registered capital and over were only 1.5 percent.

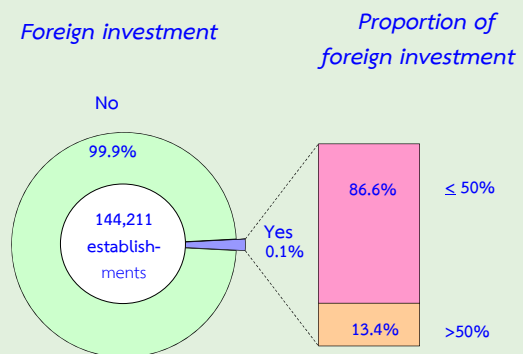
Figure 6 Percentage of business establishments by registered capital



7. Foreign investment or foreign share holding

The majority of business establishments in Vicinity or 99.9 percent had no foreign investment or foreign share holding. The establishments with foreign share holding were only 0.1 percent. Out of these, about 86.6 percent was of establishments with foreign share holding less than or equal to 50 percent. While those with foreign share holding over 50 percent had the proportion of about 13.4 percent.

Figure 7 Percentage of business establishments by foreign investment or foreign share holding

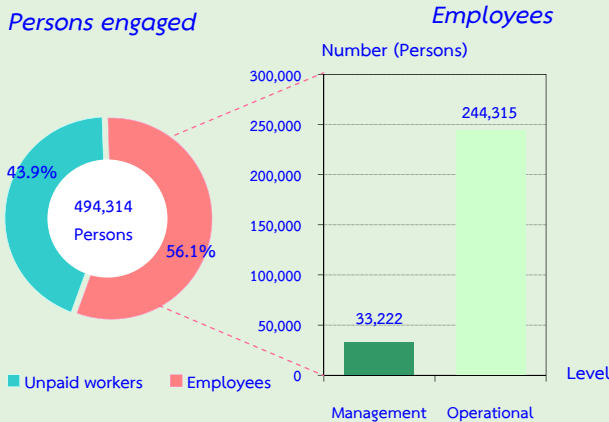


8. Number of persons engaged

In 2013, there were in total 494,314 persons engaged in establishments located in Vicinity. Of this number, about 216,777 persons or 43.9 percent were unpaid workers and 277,537 persons or 56.1 percent were employees. Employees engaged in the operational level were

about 244,315 persons or 88.0 percent, while the employees engaged in management level amounted to 33,222 persons or 12.0 percent.

Figure 8 Number and percentage of persons engaged by level of employees



Considering number of employees by size of establishment, most of them (about 53.8 percent) engaged in establishments with 1-15 persons. This was followed by those engaged in establishments with 51-200 persons and more than 200 persons which had the proportion of employees of about 15.8 percent and 12.8 percent respectively. The other employees by size of establishments had rather low proportion; each size had less than 8.0 percent.

Table 1 Number and percentage of persons engaged and employees in business establishments by size of establishment

Size of establishment	Persons engaged		Employees	
	Number	%	Number	%
Total	494,314	100.0	277,537	100.0
1-15 persons	364,545	73.7	149,237	53.8
16-25 persons	21,773	4.4	20,877	7.5
26-30 persons	7,622	1.6	7,436	2.7
31-50 persons	20,729	4.2	20,490	7.4
51-200 persons	44,066	8.9	43,927	15.8
More than 200 persons	35,579	7.2	35,570	12.8

Persons engaged refer to owners of juristic partnerships, unpaid workers and included employees in the establishments

Looking at division of business industry, it was found that most of employees engaged in *retail trade (except of motor vehicles and motorcycles)*, of about 68,915 persons or 24.8 percent. This was followed by those engaged in *wholesale trade (except of motor vehicles and motorcycles)*, of about 49,018 persons or 17.7 percent. For the employees engaged in *wholesale and retail trade ; repair of motor vehicles and motorcycles*, accounted for 43,466 persons or 15.7 percent, while the rest engaged in other business industries.

Table 2 Number of persons engaged and employees in business establishments by division of business industry

Division of business industry	Persons engaged		Employees	
	Number	%	Number	%
Total	494,314	100.0	277,537	100.0
Wholesale and retail trade ; repair of motor vehicles and motorcycles	60,971	12.3	43,466	15.7
Wholesale trade (except of motor vehicles and motorcycles)	60,015	12.1	49,018	17.7
Retail trade (except of motor vehicles and motorcycles)	163,618	33.1	68,915	24.8
Accommodation, food and beverage service activities	64,589	13.1	34,335	12.4
Information and communication	1,533	0.4	1,446	0.5
Real estate activities	48,406	9.8	20,199	7.3
Professional, scientific and technical activities	10,153	2.1	7,260	2.6
Administrative and support service activities	37,305	7.5	33,380	12.0
Art, entertainment and recreation	10,612	2.1	6,615	2.4
Other service activities	37,112	7.5	12,903	4.6

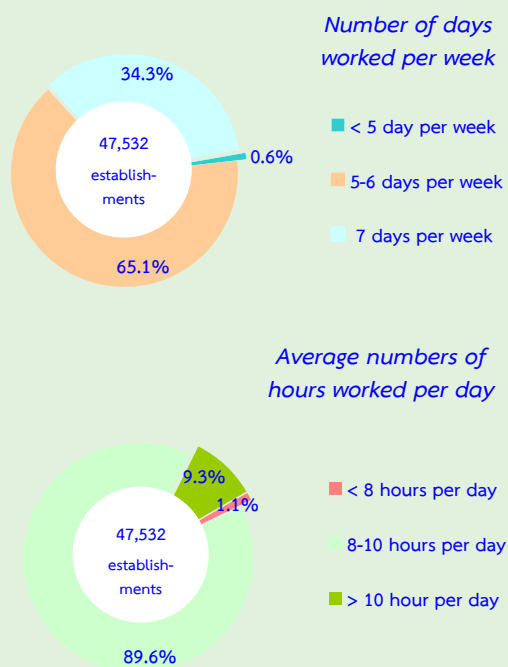
Persons engaged refer to owners of juristic partnerships, unpaid workers and included employees in the establishments

9. Number of days worked and hours worked by employees of business establishments

In terms of establishments with employees, there were about 47,532 establishments or 33.0 percent in Vicinity. Considering by number of days worked per week, it was found that about 65.1 percent was of establishments with employees worked around 5-6 days per week. For those with their employees worked around 7 days per week were about 34.3 percent. The rest of about 0.6 percent was of establishments with their employees worked less than 5 days per week.

Considering by average number of hours worked per day, most of establishments (about 89.6 percent) had employees worked around 8-10 hours per day. Those with their employees worked more than 10 hours per day were about 9.3 percent. The rest of about 1.1 percent was of establishments which had employees worked per day less than 8 hours.

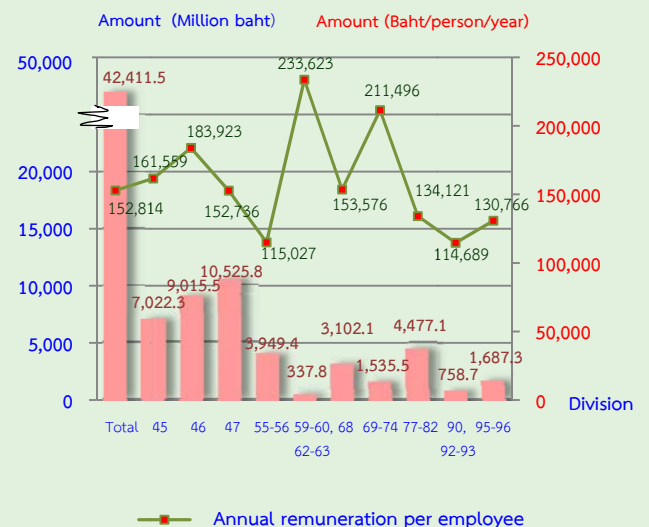
Figure 9 Percentage of business establishments by number of days worked and hours worked



10. Remuneration

Remuneration of all employees engaged in business establishments in Vicinity was about 42,411.5 million baht or about 152,814 baht per person per annum. The employees engaged in *information and communication* received the highest annual remuneration of about 233,623 baht per person. This was followed by those engaged in *professional, scientific and technical activities* and *wholesale trade (except of motor vehicles and motorcycles)* received the annual remuneration of about 211,496 baht and 183,923 baht per person respectively. The employees engaged in *art, entertainment and recreation* received the lowest annual remuneration of about 114,689 baht per person.

Figure 10 Remuneration and annual remuneration per employee by division of business industry



- Division 45 Wholesale and retail trade ; repair of motor vehicles and motorcycles
- Division 46 Wholesale trade (except of motor vehicles and motorcycles)
- Division 47 Retail trade (except of motor vehicles and motorcycles)
- Division 55-56 Accommodation, food and beverage service activities
- Division 59-60, 62-63 Information and communication
- Division 68 Real estate activities
- Division 69-74 Professional, scientific and technical activities
- Division 77-82 Administrative and support service activities
- Division 90, 92-93 Art, entertainment and recreation
- Division 95-96 Other service activities

11. Income, Intermediate consumption and value added

In 2013, the income, intermediate consumption and value added of business establishments in Vicinity amounted to 796,493.3 million baht, 650,147.9 million baht and 146,345.4 million baht respectively. The ratio of the value added to the income was about 18.4 percent. For the average value of income per establishment and per person engaged, there were about 5.5 million baht and 1.6 million baht respectively. While also, the average value added per establishment and per person engaged amounted to 1.0 million baht and 296,100 baht respectively.

Considering by division of business industry, it showed that most of establishments engaged in *retail trade (except of motor vehicles and motorcycles)* had the highest of income and value added, of about 278,237.8 million baht and 47,911.8 million baht. This was followed by those engaged in *wholesale trade (except of motor vehicles and motorcycles)* had the proportion of income and value added, of about 223,289.2 million baht and 33,477.6 million baht. The establishments engaged in *art, entertainment and recreation* had the lowest of income of about 3,474.9 million baht and those engaged in *Information and communication* had the lowest value added, of about 773.9 million baht.

Table 3 Income and value added of business establishments by division of business industry

Division of business industry	Receipts			Value added			Value added per receipts (%)
	Value (Million baht)	Per establishment (In Thousand baht)	Per person engaged (In Thousand baht)	Value (Million baht)	Per establishment (In Thousand baht)	Per person engaged (In Thousand baht)	
Total	796,493.3	5,523.1	1,611.3	146,345.4	1,014.8	296.1	18.4
Wholesale and retail trade ; repair of motor vehicles and motorcycles	192,105.6	15,306.0	3,150.8	25,378.4	2,022.0	416.2	13.2
Wholesale trade (except of motor vehicles and motorcycles)	223,289.2	29,863.5	3,720.6	33,477.6	4,477.4	557.8	15.0
Retail trade (except of motor vehicles and motorcycles)	278,237.8	4,951.2	1,700.5	47,911.8	852.6	292.8	17.2
Accommodation, food and beverage service activities	33,377.5	1,660.2	516.8	11,680.3	581.0	180.8	35.0
Information and communication	4,006.3	37,095.4	2,613.4	773.9	7,166.1	504.9	19.3
Real estate activities	18,113.9	939.1	374.2	8,669.0	449.5	179.1	47.9
Professional, scientific and technical activities	6,871.9	3,461.9	676.8	3,042.6	1,532.8	299.6	44.3
Administrative and support service activities	18,276.9	6,764.2	489.9	7,563.9	2,799.4	202.8	41.4
Art, entertainment and recreation	3,474.9	1,301.0	327.5	1,688.4	632.1	159.1	48.6
Other service activities	18,739.4	886.9	504.9	6,159.4	291.5	166.0	32.9

12. Conclusion and recommendations

The results of the 2014 Business Trade and Service survey showed that there were in total 144,211 business establishments in Vicinity. Most of them (about 98.3 percent) were establishments with 1-15 persons. The major business was *retail trade, (except of motor vehicles and motorcycles)* accounted for 39.0 percent. Regarding persons engaged in business establishments, there were totally 494,314 persons. Of this number, about 277,537 persons were employees, who received an annual remuneration about 152,814 baht per person. Moreover, the business establishments

contributed about 796,493.3 million baht of income, 650,147.9 million baht of intermediate consumption and 146,345.4 million baht of value added.

Comparing information of survey during 2009-2013, the results showed the operation of business establishments in Vicinity was considerably growth. This was probably due to the increase in number of establishments, the employment and the remuneration. Nevertheless, the Thai economy in some period was slowdown due to the impact of unusual events, such as natural disasters, political unrest and global economic crisis, etc.