

EXECUTIVE SUMMARY

The National Statistical Office (NSO) carried out the Business trade and Services Census every two years. The objectives of the survey is to collect basic business information to be used by both public and private sectors for policy formulation and planning development. The survey covered business establishments with at least one person engaged in the economic activity and classified according to the Thailand Standard Industrial Classification (TSIC – 2009), i.e. *wholesale trade, retail trade, accommodation, food and beverage service activities, information and communication, real estate activities, professional, scientific and technical activities, administrative and support service activities, art, entertainment and recreation and other service activities* throughout the country.

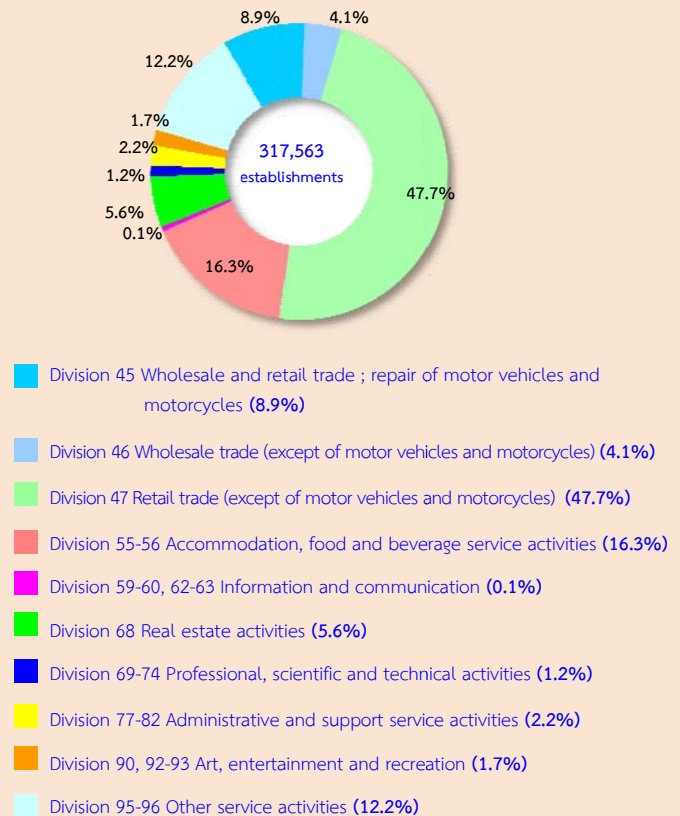
In conducting the 2014 business trade and services survey, the total number of sample establishments in Northern region were 5,923 establishments. The data presented in the report was the information on business operation in 2013 (January 1 to December 31, 2013). The summary information of Northern region is as follows :

1. Number of establishments by division of business industry

The survey results showed that there were in total 317,563 establishments in Northern region. Most of them (about 47.7 percent) were engaged in *retail trade (except of motor vehicles and motorcycles)*. This was followed by those engaged in *accommodation, food and beverage service activities* of about 16.3 percent. The establishments engaged in *other service activities, wholesale and retail trade; repair of motor vehicles and motorcycles* were about 12.2 percent and 8.9 percent respectively.

The other divisions of business industry not mentioned above had rather low proportion; each division had less than 6.0 percent of the total.

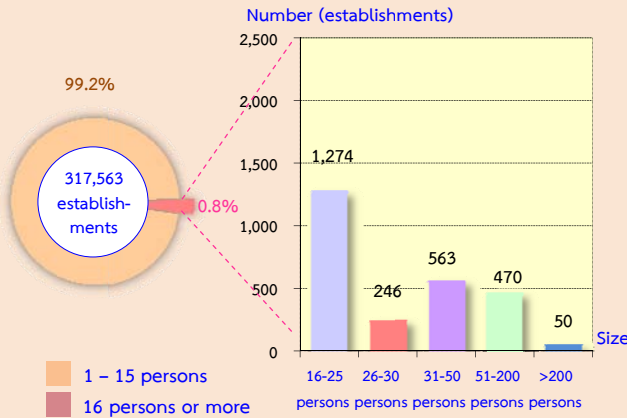
Figure 1 Percentage of business establishments by division of business industry



2. Size of establishment

The size of establishments specified by number of person engaged, most of them (about 314,960 establishments or 99.2 percent) were establishments with 1-15 persons engaged. Those with more than 16 persons engaged were about 2,603 establishments or 0.8 percent. Of this number, the establishments with 16-25 persons, 31-50 persons, 51-200 persons and 26-30 persons amounted to 1,274 establishments, 563 establishments, 470 establishments and 246 establishments respectively. The establishments with more than 200 persons engaged were about 50 establishments.

Figure 2 Number of business establishments by size of establishment

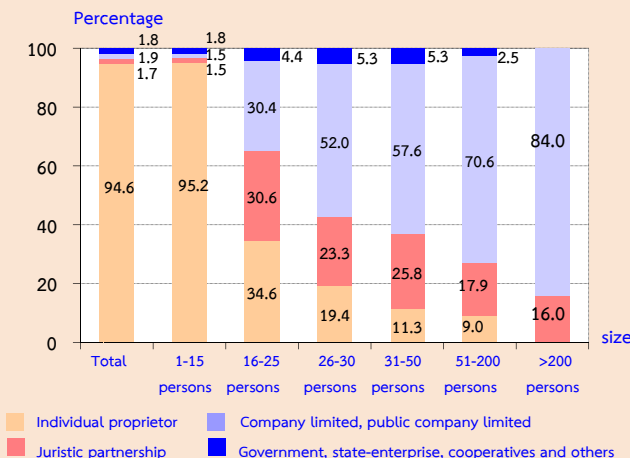


3. Form of legal organization

Most of establishments (about 94.6 percent) were individual proprietor. The establishments which were in the form of company limited or public company limited, government, state-enterprise, cooperatives and others and juristic partnership had the close proportion of about 1.9 percent, 1.8 percent and 1.7 percent respectively.

Considering by size of establishment, it was found a high proportion of the establishments with 1-15 persons engaged (about 95.2 percent) which was in the form of individual proprietor. While a high proportion of about 84.0 percent of establishments with more than 200 persons engaged was in the form of company or public company limited.

Figure 3 Percentage of business establishments By form of legal organization and size of establishment

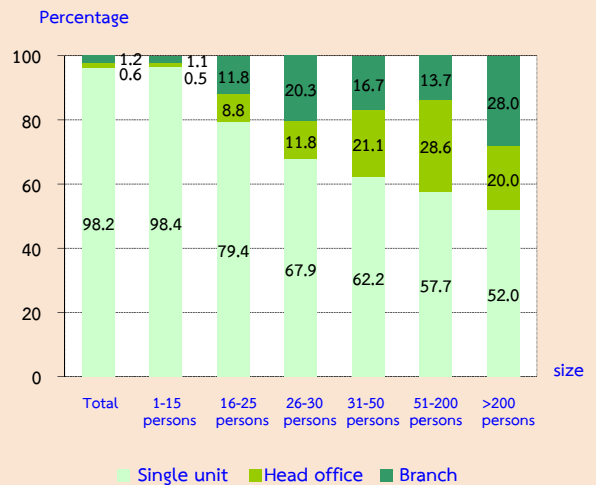


4. Form of economic organization

The majority of business establishments in Northern region (about 98.2 percent) were in the form of single unit. About 1.2 percent was an office branch or subsidiary, and the rest of about 0.6 percent was a head office.

Considering the form of economic organization by size of establishment, it showed that most of establishments in all sizes were in the form of single unit.

Figure 4 Percentage of business establishments by form of economic organization and size of establishment

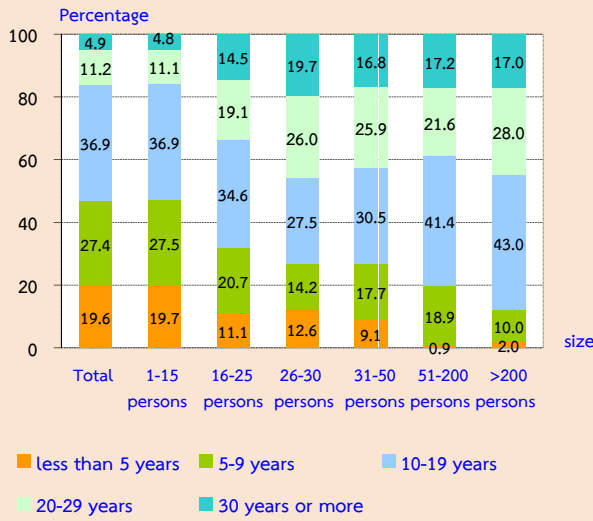


5. Period of operation

Most of establishments (about 36.9 percent) have operated their business for 10-19 years. The establishments operated their business for 5-9 years and less than 5 years were about 27.4 percent and 19.6 percent respectively. Those with their operation business for 20 years or more were about 16.1 percent.

Considering by size of establishment, it was found that most establishments in all sizes have operated their business for 10 years or more, of which each size had more than 50 percent.

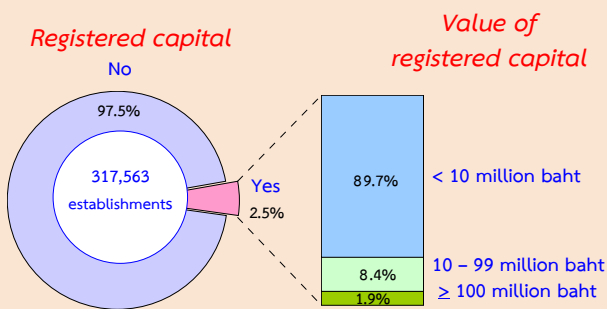
Figure 5 Percentage of business establishments by period of operation and size of establishment



6. Registered capital

The number of business establishments with registered capital amounted to 7,946 establishments or about 2.5 percent of the total. Most of them (about 89.7 percent) had less than 10 million baht of registered capital. Those with 10-99 million baht of registered capital were about 8.4 percent. The establishments with 100 million baht of registered capital and over were only 1.9 percent.

Figure 6 Percentage of business establishments by registered capital

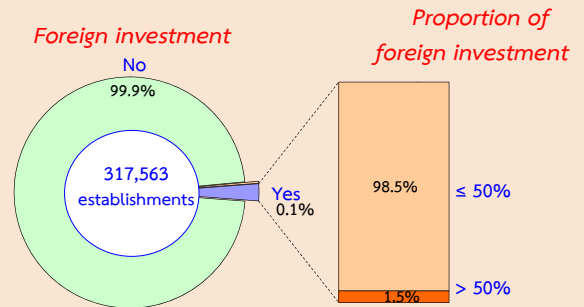


7. Foreign investment or foreign share holding

The majority of business establishments in Northern region (about 99.9 percent) had no foreign investment or foreign share holding. For

the establishments with foreign share holding were only 0.1 percent. Out of these, about 98.5 percent was of establishments with foreign share holding less than or equal to 50 percent. The rest of about 1.5 percent was found for the establishments with foreign share holding greater than 50 percent.

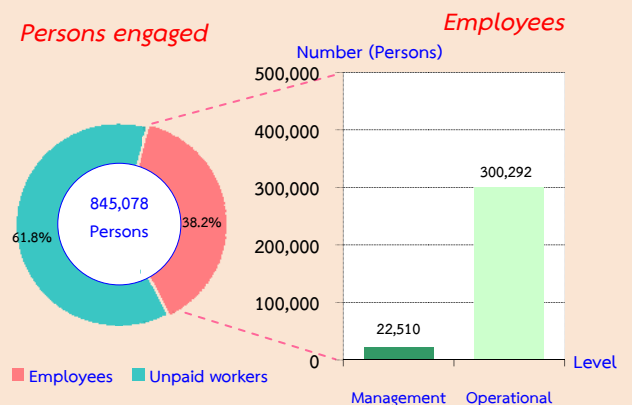
Figure 7 Percentage of business establishments by foreign investment or foreign share holding



8. Number of persons engaged and employees

Person engaged in establishment refers to owners, unpaid business partners and employees. In 2013, there were in total 845,078 persons engaged in establishments located in Northern Region. Of this number, about 522,276 persons or 61.8 percent were unpaid workers and 322,802 persons or 38.2 percent were employees. The employees engaged in operational level were about 300,292 persons or 93.0 percent, while the employees engaged in management level amounted to 22,510 persons or 7.0 percent.

Figure 8 Number and percentage of persons engaged by level of employees



Considering number of employees by size of establishment, most of them (about 65.6 percent) engaged in establishments with 1-15 persons. This was followed by those engaged in establishments with 51-200 persons and 16-25 persons had the proportion of employees of about 13.1 percent and 7.3 percent respectively. The other employees by size of establishments had rather low proportion ; each size had less than 7.0 percent.

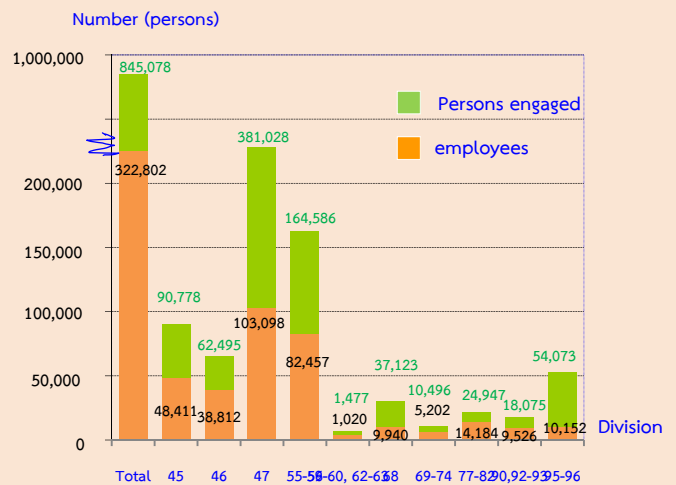
Table 1 Number and percentage of persons engaged and employees in business establishments by size of establishment

Size of establishment	Persons engaged		Employees	
	Number	%	Number	%
Total	845,078	100.0	322,802	100.0
1-15 persons	731,048	86.5	211,751	65.6
16-25 persons	25,406	3.0	23,708	7.3
26-30 persons	6,985	0.9	6,582	2.1
31-50 persons	22,176	2.6	21,682	6.7
51-200 persons	42,571	5.0	42,200	13.1
More than 200 persons	16,892	2.0	16,879	5.2

Persons engaged refer to owners of juristic partnerships, unpaid workers and included employees in the establishments

Looking at division of business industry, it was found that most of employees engaged in *retail trade (except of motor vehicles and motorcycles)*, of about 103,098 persons or 31.9 percent. This was followed by those engaged in *accommodation, food and beverage service activities*, of about 82,457 persons or 25.5 percent. The employees engaged in *wholesale and retail trade; repair of motor vehicles and motorcycles*, accounted for 48,411 persons or 15.0 percent, while the rest engaged in other business industries.

Figure 9 Number of persons engaged and employees in business establishments by division of business industry



Division 45 Wholesale and retail trade ; repair of motor vehicles and motorcycles

Division 46 Wholesale trade (except of motor vehicles and motorcycles)

Division 47 Retail trade (except of motor vehicles and motorcycles)

Division 55-56 Accommodation, food and beverage service activities

Division 59-60, 62-63 Information and communication

Division 68 Real estate activities

Division 69-74 Professional, scientific and technical activities

Division 77-82 Administrative and support service activities

Division 90, 92-93 Art, entertainment and recreation

Division 95-96 Other service activities

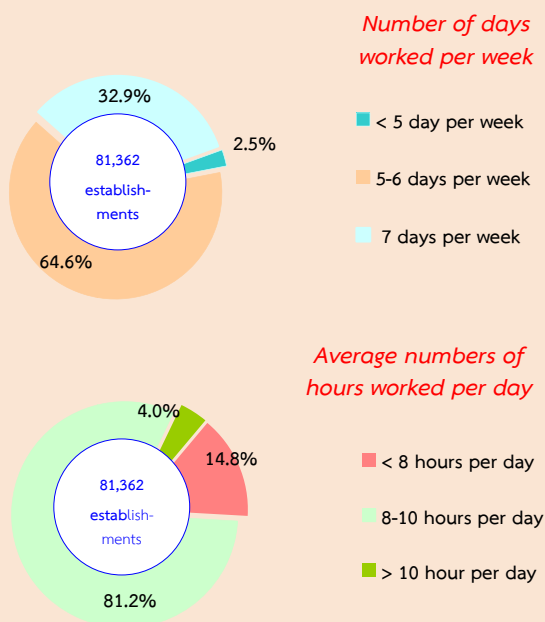
9. Number of days worked and hours

worked by employees of business establishments

In terms of establishments with employees, there were about 81,362 establishments or 25.6 percent in Northern region. Considering by number of days worked per week, it was found that about 64.6 percent was of establishments with employees worked around 5-6 days per week. For those with their employees worked around 7 days per week were about 32.9 percent. The rest of about 2.5 percent was of establishments with their employees worked less than 5 days per week.

Considering by average number of hours worked per day, most of establishments (about 81.2 percent) had employees worked around 8-10 hours per day. Those with their employees worked less than 8 hours per day were about 14.8 percent. The rest of about 4.0 percent was of establishments which had employees worked per day more than 10 hours.

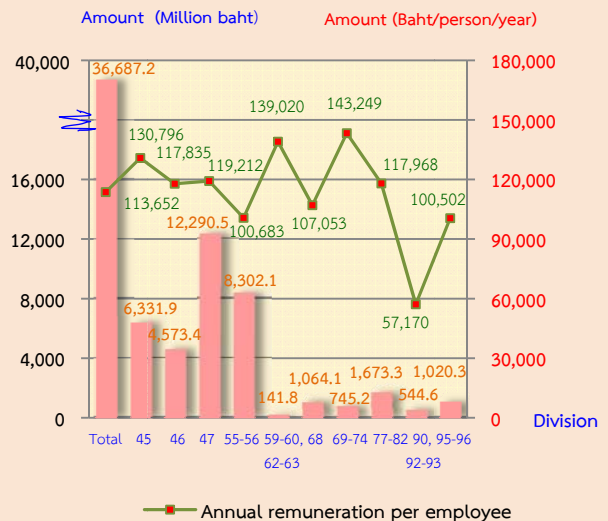
Figure 10 Percentage of business establishments by number of days worked and hours worked



10. Remuneration

Remuneration of all employees engaged in business establishments in Northern region was about 36,687.2 million baht or about 113,652 baht per person per annum. The employees engaged in *professional, scientific and technical activities* received the highest annual remuneration of about 143,249 baht per person. This was followed by those engaged in *Information and communication* and *wholesale and retail trade; repair of motor vehicles and motorcycles* received the annual remuneration of about 139,020 baht and 130,796 baht per person respectively. The employees engaged in *art, entertainment and recreation* received the lowest annual remuneration of about 57,170 baht per person.

Figure 11 Remuneration and annual remuneration per employee by division of business industry



Division 45 Wholesale and retail trade ; repair of motor vehicles and motorcycles

Division 46 Wholesale trade (except of motor vehicles and motorcycles)

Division 47 Retail trade (except of motor vehicles and motorcycles)

Division 55-56 Accommodation, food and beverage service activities

Division 59-60, 62-63 Information and communication

Division 68 Real estate activities

Division 69-74 Professional, scientific and technical activities

Division 77-82 Administrative and support service activities

Division 90, 92-93 Art, entertainment and recreation

Division 95-96 Other service activities

11. Income, Intermediate consumption and value added

In 2013, the income, intermediate consumption and value added of business establishments in Northern region amounted to 806,462.7 million baht, 643,117.5 million baht and 163,345.2 million baht respectively. The ratio of the value added to the income was about 20.3 percent. For the average value of income per establishment and per person engaged, there were about 2.5 million baht and 954,300 baht respectively. While also, the average value added per establishment and per person engaged amounted to 514,400 baht and 193,300 baht respectively.

Considering by division of business industry, it showed that most of establishments engaged in *retail trade (except of motor vehicles and motorcycles)* had the highest of income and value added of about 412,694.4 million baht and 78,070.5 million baht respectively. This was followed by those engaged in *wholesale and retail trade ; repair of motor vehicles and motorcycles* had the proportion of income and value added, of about 176,725.6 million baht and 24,702.9 million baht respectively. Meanwhile, the establishments engaged in *information and communication* had the lowest income and value added, of about 1,423.5 million baht and 566.9 million baht respectively.

Table 2 Income and value added of business establishments by division of business industry

Division of business industry	Receipts			Value added			Value added per receipts (%)
	Value (Million baht)	Per establishment (In Thousand baht)	Per person engaged (In Thousand baht)	Value (Million baht)	Per establishment (In Thousand baht)	Per person engaged (In Thousand baht)	
Total	806,462.7	2,539.5	954.3	163,345.2	514.4	193.3	20.3
Wholesale and retail trade ; repair of motor vehicles and motorcycles	176,725.6	6,266.6	1,946.8	24,702.9	876.0	272.1	14.0
Wholesale trade (except of motor vehicles and motorcycles)	133,655.3	10,197.2	2,138.7	19,845.8	1,514.1	317.6	14.8
Retail trade (except of motor vehicles and motorcycles)	412,694.4	2,721.6	1,083.1	78,070.5	514.8	204.9	18.9
Accommodation, food and beverage service activities	50,871.1	980.4	309.1	22,689.3	437.3	137.9	44.6
Information and communication	1,423.5	5,102.0	963.7	566.9	2,031.8	383.8	39.8
Real estate activities	8,723.9	493.1	235.0	5,354.0	302.6	144.2	61.4
Professional, scientific and technical activities	3,996.6	1,090.2	380.8	2,166.1	590.9	206.4	54.2
Administrative and support service activities	7,100.5	1,024.8	284.6	3,568.2	515.0	143.0	50.3
Art, entertainment and recreation	3,439.9	627.6	190.3	1,738.2	317.1	96.2	50.5
Other service activities	7,832.1	202.5	144.8	4,643.1	120.0	85.9	59.3

12. Conclusion and recommendations

The results of the 2014 Business Trade and Service survey showed that there were in total 317,563 business establishments in Northern region. Most of them (about 99.2 percent) were establishments with 1-15 persons. The major business was *retail trade, (except of motor vehicles and motorcycles)* accounted for 47.7 percent. Regarding persons engaged in business establishments, there were totally 845,078 persons. Of this number, about 322,802 persons were employees receiving the average annual remuneration about 113,652 baht per person. Moreover, the

business establishments contributed about 806,462.7 million baht of income, 643,117.5 million baht of intermediate consumption and 163,345.2 million baht of value added.

Comparing information of survey during 2009-2013, the results showed the operation of business establishments in the Northern region was considerably growth. This was probably due to the increase in number of establishments, the employment and the remuneration. Nevertheless, the Thai economy in some period was slowdown due to the impact of unusual events, such as natural disasters, political unrest and global economic crisis, etc.