

EXECUTIVE SUMMARY

The National Statistical Office (NSO) carried out the Business trade and Services Census every two years. The objectives of the survey is to collect basic business information to be used by both public and private sectors for policy formulation and planning development. The survey covered business establishments with at least one person engaged in the economic activity and classified according to the Thailand Standard Industrial Classification (TSIC – 2009), i.e. *wholesale trade, retail trade, accommodation, food and beverage service activities, information and communication, real estate activities, professional, scientific and technical activities, administrative and support service activities, art, entertainment and recreation and other service activities* throughout the country.

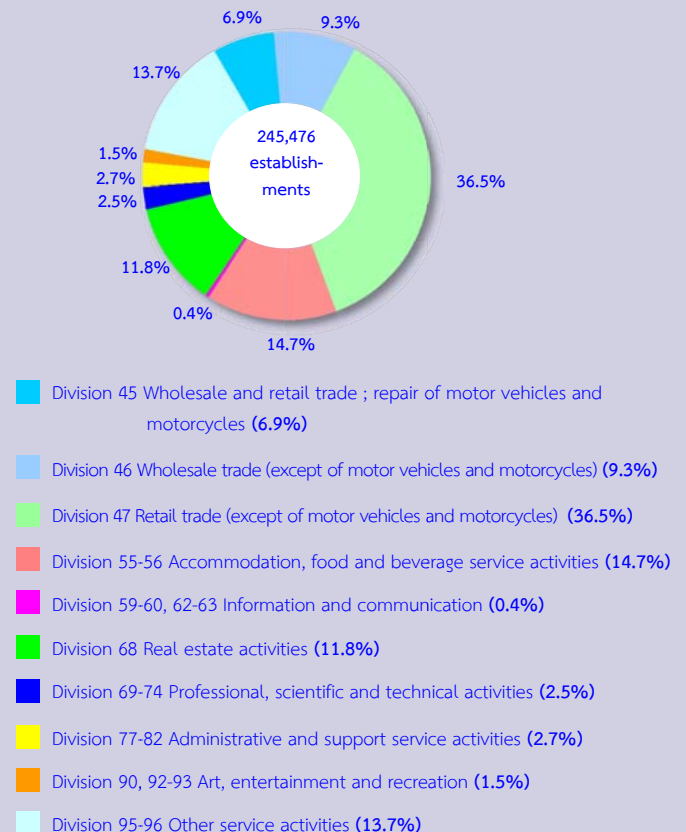
In conducting the 2014 business trade and services survey, the total number of sample establishments in Bangkok were 10,637 establishments. The data presented in the report was the information on business operation in 2013 (January 1 to December 31, 2013). The summary information of Bangkok is as follows :

1. Number of establishments by division of business industry

The survey results showed that there were in total 245,476 establishments in Bangkok. Most of them (about 36.5 percent) were engaged in *retail trade (except of motor vehicles and motorcycles)*. This was followed by those engaged in *accommodation, food and beverage service activities* were about 14.7 percent. The business establishments engaged in *other service activities* and *real estate activities* had the proportion of about 13.7 percent and 11.8 percent respectively. The establishments engaged in *wholesale trade (except of motor vehicles and motorcycles)*, and *wholesale and retail trade;*

repair of motor vehicles and motorcycles were about 9.3 percent and 6.9 percent respectively. The other divisions of business industry not mentioned above had rather low proportion; each division had less than 3.0 percent of the total.

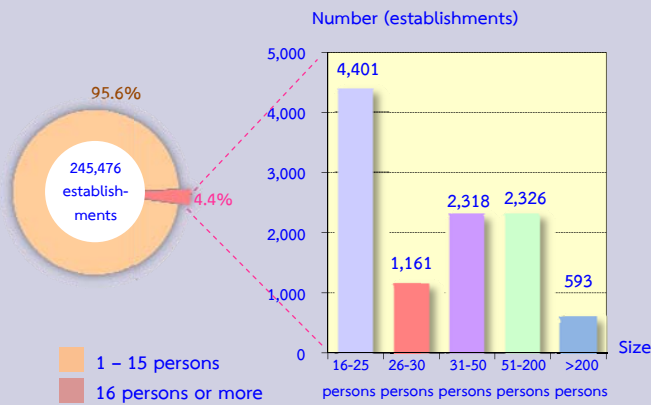
Figure 1 Percentage of business establishments by division of business industry



2. Size of establishment

The size of establishments specified by number of person engaged, most of them (about 234,677 establishments or 95.6 percent) were establishments with 1-15 persons engaged. Those with more than 16 persons engaged were about 10,799 establishments or 4.4 percent. Of this number, the establishments with 16-25 persons, 51-200 persons, 31-50 persons, and 26-30 persons amounted to 4,401 establishments, 2,326 establishments, 2,318 establishments and 1,161 establishments respectively. The establishments with more than 200 persons engaged were about 593 establishments.

Figure 2 Number of business establishments by size of establishment

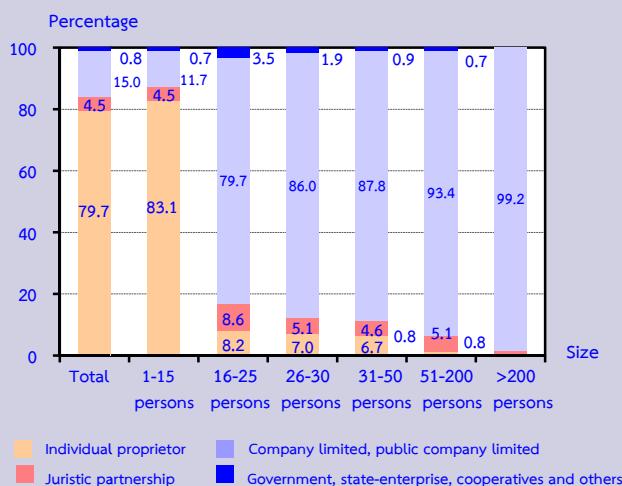


3. Form of legal organization

Most of establishments (about 79.7 percent) were individual proprietor. The establishments which were in the form of company limited or public company limited and juristic partnership had the proportion of about 15.0 percent and 4.5 percent respectively. The form of government, state-enterprise, cooperatives and others, were about 0.8 percent.

Considering by size of establishment, it was found a high proportion of the establishments with 1-15 persons engaged (about 83.1 percent) which was in the form of individual proprietor. Meanwhile, more than 79.0 percent of establishments with 16 persons engaged and over was in the form of company limited or public company limited.

Figure 3 Percentage of business establishments By form of legal organization and size of establishment

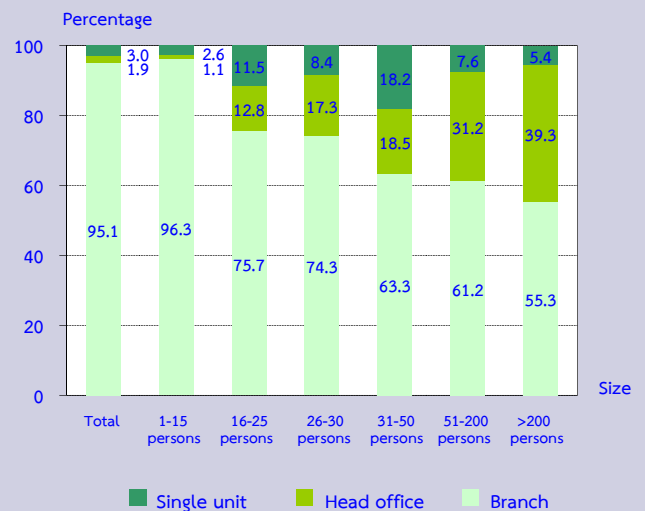


4. Form of economic organization

The majority of business establishments in Bangkok (about 95.1 percent) were in the form of single unit. About 3.0 percent was an office branch or subsidiary, and the rest of about 1.9 percent was a head office.

Considering the form of economic organization by size of establishment, it show that the establishments in all size were in the form of single unit.

Figure 4 Percentage of business establishments by form of economic organization and size of establishment

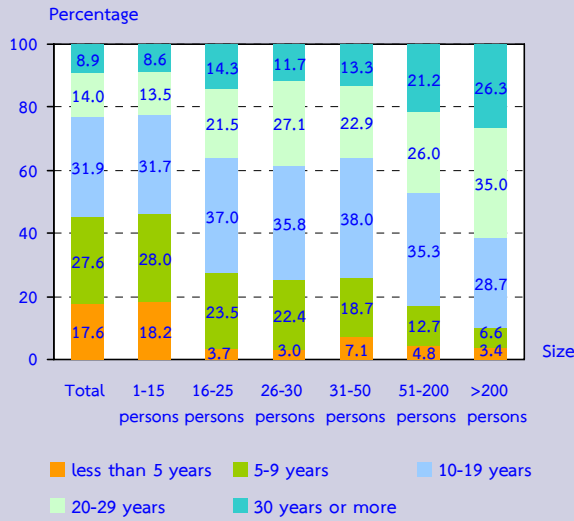


5. Period of operation

The establishments have operated their business for 10-19 years were about 31.9 percent. The establishments operated their business for 5-9 years and less than 5 years had the proportion of about 27.6 percent and 17.6 percent respectively. The establishments operated their business 20-29 years and 30 years or more were about 14.0 percent and 8.9 percent respectively.

Considering by size of establishment (number of persons engaged), it showed that most of establishments (more than 50.0 percent) in all sizes have operated their business for 10 years or more.

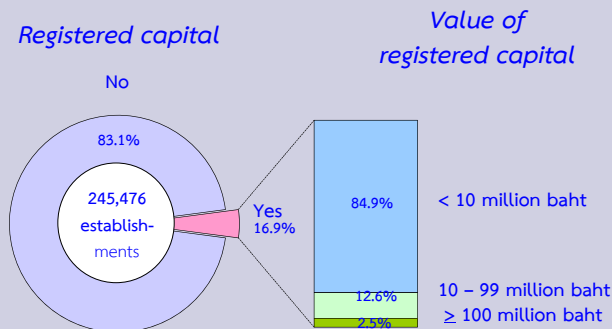
Figure 5 Percentage of business establishments by period of operation and size of establishment



6. Registered capital

The number of business establishments with registered capital amounted to 41,560 establishments or about 16.9 percent of the total. Most of them (about 84.9 percent) had less than 10 million baht of registered capital. Those with 10-99 million baht of registered capital were about 12.6 percent. The establishments with 100 million baht of registered capital and over were only 2.5 percent.

Figure 6 Percentage of business establishments by registered capital

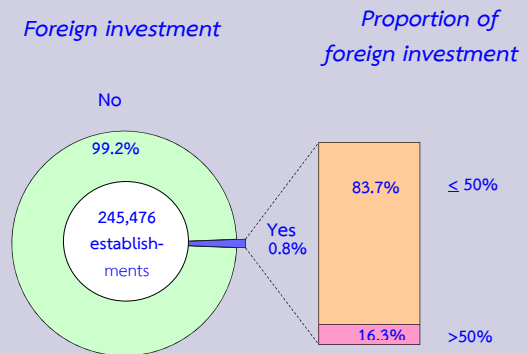


7. Foreign investment or foreign share holding

The majority of business establishments in Bangkok (99.2 percent) had no foreign investment or foreign share holding. The establishments with foreign share holding were

only 0.8 percent. Out of these, about 83.7 percent was of establishments with foreign share holding less than or equal to 50 percent. While those with foreign share holding over 50 percent had the proportion of about 16.3 percent.

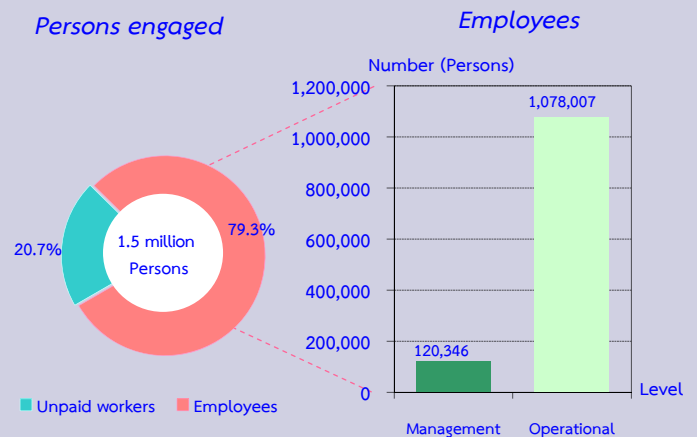
Figure 7 Percentage of business establishments by foreign investment or foreign share holding



8. Number of persons engaged and employees

In 2013, there were in total 1.5 million persons engaged in establishments located in Bangkok. Of this number, about 311,913 persons or 20.7 percent were unpaid workers and 1.2 million persons or 79.3 percent were employees. Employees engaged in the operational level were about 1.1 million persons or 90.0 percent, while employees engaged in management level amounted to 120,346 persons or 10.0 percent.

Figure 8 Number and percentage of persons engaged by level of employees



Considering number of employees by size of establishment, most of them (about 33.3 percent) engaged in establishments with 1-15 persons. This was followed by those engaged in establishments with more than 200 persons and 51-200 persons which were of about 31.3 percent and 17.9 percent respectively. The other employees by size of establishments had rather low proportion; each size had less than 8.0 percent.

Table 1 Number and percentage of persons engaged and employees in business establishments by size of establishment

Size of establishment	Persons engaged		Employees	
	Number	%	Number	%
Total	1,510,266	100.0	1,198,353	100.0
1-15 persons	706,841	46.8	398,470	33.3
16-25 persons	87,103	5.8	84,962	7.1
26-30 persons	32,881	2.2	32,439	2.7
31-50 persons	92,788	6.1	92,240	7.7
51-200 persons	214,971	14.2	214,654	17.9
More than 200 persons	375,682	24.9	375,588	31.3

Persons engaged refer to owners of juristic partnerships, unpaid workers and included employees in the establishments

Looking at division of business industry, it was found that most of employees engaged in *wholesale trade (except of motor vehicles and motorcycles)*, of about 302,617 persons or 25.2 percent. This was followed by those engaged in *accommodation, food and beverage service activities* were about 209,357 persons or 17.5 percent. For the employees engaged in *retail trade (except of motor vehicles and motorcycles)*, accounted for 200,163 persons or 16.7 percent, while the rest engaged in other business industries.

Table 2 Number of persons engaged and employees in business establishments by division of business industry

Division of business industry	Persons engaged		Employees	
	Number	%	Number	%
Total	1,510,266	100.0	1,198,353	100.0
Wholesale and retail trade ; repair of motor vehicles and motorcycles	114,500	7.6	97,122	8.1
Wholesale trade (except of motor vehicles and motorcycles)	324,552	21.5	302,617	25.2
Retail trade (except of motor vehicles and motorcycles)	329,027	21.8	200,163	16.7
Accommodation, food and beverage service activities	262,470	17.4	209,357	17.5
Information and communication	30,496	2.0	30,137	2.5
Real estate activities	119,344	7.9	85,394	7.1
Professional, scientific and technical activities	77,811	5.2	73,760	6.2
Administrative and support service activities	154,709	10.2	148,757	12.4
Art, entertainment and recreation	14,995	1.0	10,341	0.9
Other service activities	82,362	5.4	40,705	3.4

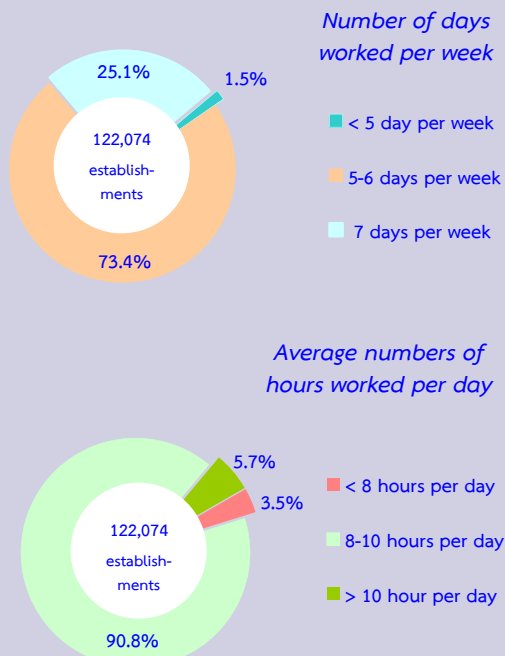
Persons engaged refer to owners of juristic partnerships, unpaid workers and included employees in the establishments

9. Number of days worked and hours worked by employees of business establishments

In terms of establishments with employees, there were about 122,074 establishments or 49.7 percent in Bangkok. Considering by number of days worked per week, it was found that about 73.4 percent was of establishments with employees worked around 5-6 days per week. For those with their employees worked around 7 days per week were about 25.1 percent. The rest of about 1.5 percent was of establishments with their employees worked less than 5 days per week.

Considering by average number of hours worked per day, most of establishments (about 90.8 percent) had employees worked around 8-10 hours per day. Those with their employees worked more than 10 hours per day were about 5.7 percent. The rest of about 3.5 percent was of establishments which had employees worked per day less than 8 hours.

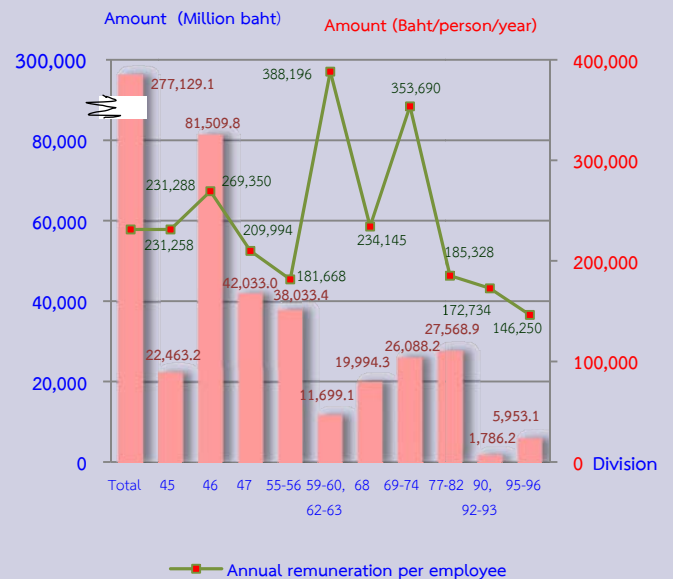
Figure 9 Percentage of business establishments by number of days worked and hours worked



10. Remuneration

The remuneration of all employees engaged in business establishments in Bangkok was about 277,129.1 million baht or about 231,258 baht per person per annum. The employees engaged in *information and communication* received the highest annual remuneration of about 388,196 baht per person. This was followed by those engaged in *professional, scientific and technical activities* and *wholesale trade (except of motor vehicles and motorcycles)* received the annual remuneration of about 353,690 baht and 269,350 baht per person respectively. The employees engaged in *other service activities* received the lowest annual remuneration of about 146,250 baht per person.

Figure 10 Remuneration and annual remuneration per employee by division of business industry



- Division 45 Wholesale and retail trade ; repair of motor vehicles and motorcycles
- Division 46 Wholesale trade (except of motor vehicles and motorcycles)
- Division 47 Retail trade (except of motor vehicles and motorcycles)
- Division 55-56 Accommodation, food and beverage service activities
- Division 59-60, 62-63 Information and communication
- Division 68 Real estate activities
- Division 69-74 Professional, scientific and technical activities
- Division 77-82 Administrative and support service activities
- Division 90, 92-93 Art, entertainment and recreation
- Division 95-96 Other service activities

11. Income, Intermediate consumption and value added

In 2013, the income, intermediate consumption and value added of business establishments in Bangkok amounted to 5.1 trillion baht 4.3 trillion baht and 790,983.6 million baht respectively. The ratio of the value added to the income was about 15.5 percent. For the average value of income per establishment and per person engaged, there were about 20.8 million baht and 3.4 million baht respectively. While also, the average value added per establishment and per person engaged amounted to 3.2 million baht and 523,700 baht respectively.

Considering by division of business industry, it showed that most of establishments engaged in *wholesale trade (except of motor vehicles and motorcycles)* had the highest of income and value added, of about 2.4 trillion baht and 248,456.0 million baht. This was followed by those engaged in *wholesale and retail trade ; repair of motor vehicles and motorcycles* had the proportion of income, of about 1.1 trillion baht and those engaged in *retail trade (except of motor vehicles and motorcycles)* had the proportion of value added, of about 129,487.7 million baht. The establishments engaged in *art, entertainment and recreation* had the lowest of income and value added of about 8,668.5 million baht and 4,028.4 million baht respectively.

Table 3 Income and value added of business establishments by division of business industry

Division of business industry	Receipts			Value added			Value added per receipts (%)
	Value (Million baht)	Per establishment (in Thousand baht)	Per person engaged (in Thousand baht)	Value (Million baht)	Per establishment (in Thousand baht)	Per person engaged (in Thousand baht)	
Total	5,113,988.1	20,832.9	3,386.2	790,983.6	3,222.2	523.7	15.5
Wholesale and retail trade ; repair of motor vehicles and motorcycles	1,052,129.1	62,530.0	9,188.9	96,134.9	5,713.5	839.6	9.1
Wholesale trade (except of motor vehicles and motorcycles)	2,444,647.9	106,949.3	7,532.4	248,456.0	10,869.5	765.5	10.2
Retail trade (except of motor vehicles and motorcycles)	833,567.3	9,301.9	2,533.4	129,487.7	1,445.0	393.5	15.5
Accommodation, food and beverage service activities	201,016.8	5,563.4	765.9	74,573.5	2,063.9	284.1	37.1
Information and communication	71,388.4	68,183.7	2,340.9	21,864.4	20,882.9	717.0	30.6
Real estate activities	173,241.8	5,964.0	1,451.6	72,001.6	2,478.7	603.3	41.6
Professional, scientific and technical activities	144,730.0	23,164.2	1,860.0	47,708.7	7,635.8	613.1	33.0
Administrative and support service activities	159,805.9	24,491.3	1,032.9	81,495.6	12,489.7	526.8	51.0
Art, entertainment and recreation	8,668.5	2,371.7	578.1	4,028.4	1,102.2	268.7	46.5
Other service activities	24,792.6	739.5	301.0	15,232.8	454.4	184.9	61.4