

EXECUTIVE SUMMARY

The National Statistical Office carried out the Business Trade and Services Survey every two years, the 2010 survey is the 24th round. The main purpose of the survey is to collect the basic business information to be used by both public and private sectors for policy formulation and planning development. The survey covered business establishments engaged in wholesale trade, retail trade, hotels and restaurants, real estate activities, recreational and other services activities throughout the country.

The field work was conducted during May 1 to August 31, 2010. The data presented in this report was the information on business operation during January 1 to December 31, 2009 of the establishments located in **Central region**. The major findings are as follows:

1. Number of establishments by division of business industry

The survey result showed that there were in total 278,307 establishments in Central region. Most of them (about 48.3 percent) were engaged in *retail trade, (except of motor vehicles and motorcycles), repair of personal and household goods*. This was followed by those engaged in *hotels and restaurants* of about 17.7 percent. The business establishments engaged in *sale, maintenance and repair of motor vehicles and motorcycles, retail sale of automotive fuel*, and *other service activities* were about 12.3 percent and 9.4 percent respectively. The other divisions of business industry not mentioned above had rather low proportion; each division had less than 4.0 percent of the total.

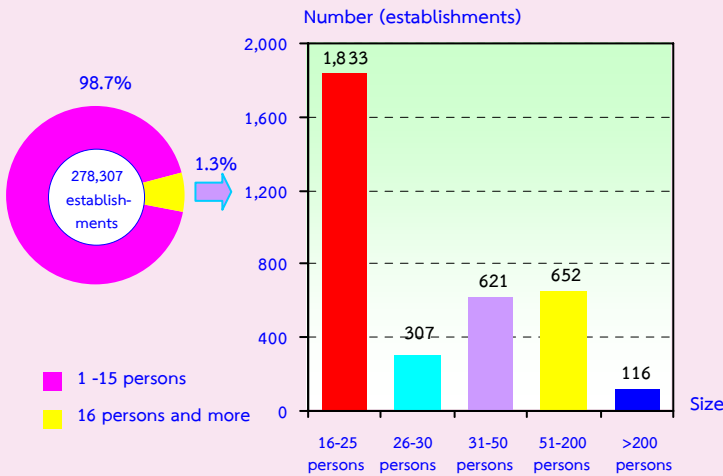
Table 1 Number and percentage of business establishments by division of business industry

Division of business industry	Number	%
Total	278,307	100.0
Sale, maintenance and repair of motor vehicles and motorcycles, retail sale of automotive fuel	34,255	12.3
Wholesale trade and commission trade, except of motor vehicles and motorcycles	8,818	3.2
Retail trade, (except of motor vehicles and motorcycles), repair of personal and household goods	134,313	48.3
Hotels and restaurants	49,296	17.7
Real estate activities	10,552	3.8
Renting of machinery and equipment without operator and of personal and household goods	3,335	1.2
Computer and related activities	627	0.2
Research and development and other business activities	5,819	2.1
Recreational, cultural and sporting activities	5,171	1.8
Other service activities	26,121	9.4

2. Size of establishment

The business establishments located in Central region, most of them (about 274,778 establishments or 98.7 percent) were establishments with 1-15 persons engaged. Those with more than 15 persons engaged were about 3,529 establishments or 1.3 percent. Of this number, establishments with 16-25 persons, 51-200 persons, 31-50 persons, and 26-30 persons amounted to 1,833 establishments, 652 establishments, 621 establishments, and 307 establishments respectively. The establishments with more than 200 persons engaged, was found 116 establishments.

Figure 1 Number of business establishments by size of establishment (number of persons engaged)

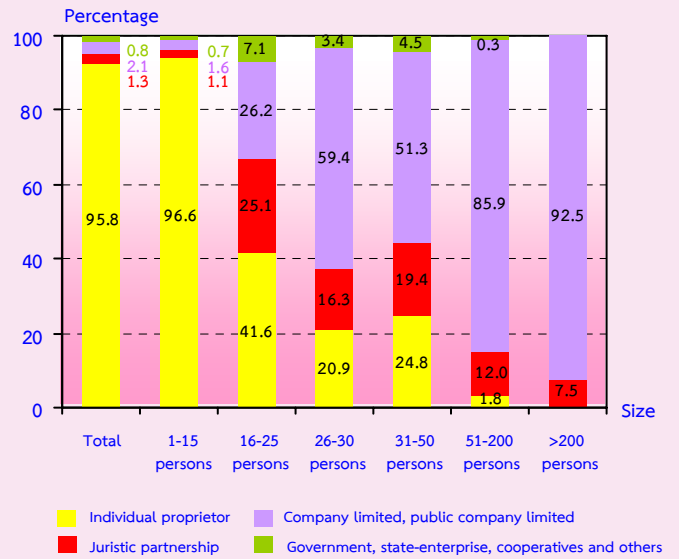


3. Form of legal organization

Most establishments (about 95.8 percent) were individual proprietor. The establishments in the form of company limited or public company limited and juristic partnership were about 2.1 percent and 1.3 percent respectively. Those, which were in the form of government, state-enterprise, cooperatives and others, had proportion of about 0.8 percent.

Considering by size of establishment, it was found a high proportion of the establishments with 1-15 persons engaged (about 96.6 percent) which was in the form of individual proprietor. Meanwhile, it was found a high proportion of about 92.5 percent of establishments with more than 200 persons engaged which was in the form of company or public company limited.

Figure 2 Percentage of business establishments by form of legal organization and size of establishment

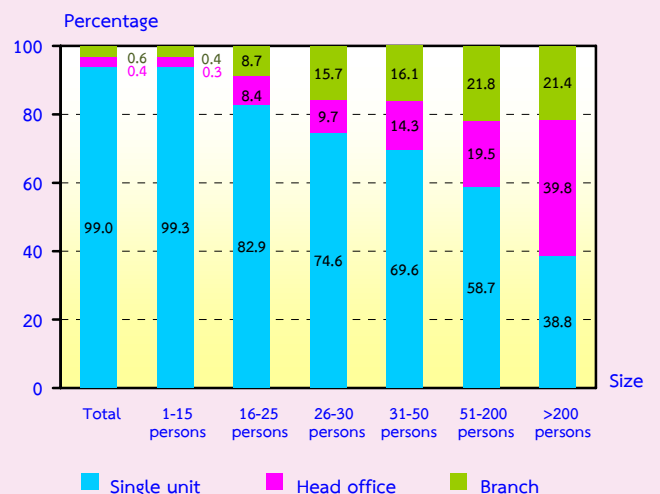


4. Form of economic organization

The majority of establishments in Central region (99.0 percent) were in the form of single unit. About 0.6 percent was an office branch or subsidiary, and the rest of about 0.4 percent was a head office.

Considering the form of economic organization by size of establishment, it was showed that more than 58.0 percent of the establishments with less than 200 persons engaged were in the form of single unit.

Figure 3 Percentage of business establishments by form of economic organization and size of establishment

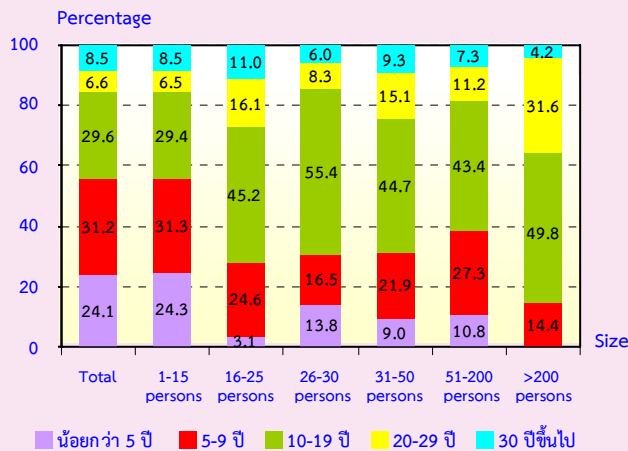


5. Period of operation

The result showed that about 31.2 percent of establishments have operated their business for 5-9 years. The establishments operated their business for 10-19 years were about 29.6 percent. Those with operation less than 5 years and those with operation 30 years or more were about 24.1 percent and 8.5 percent respectively. The establishments operated their business 20-29 years had the lowest proportion, of about 6.6 percent.

Considering by size of establishment (by number of persons engaged), it was found that 61.0 percent of establishments with 16 persons and over have operated their business for 10 years or more. Meanwhile, about 55.6 percent of establishments with 1-15 persons engaged have operated their business less than 10 years.

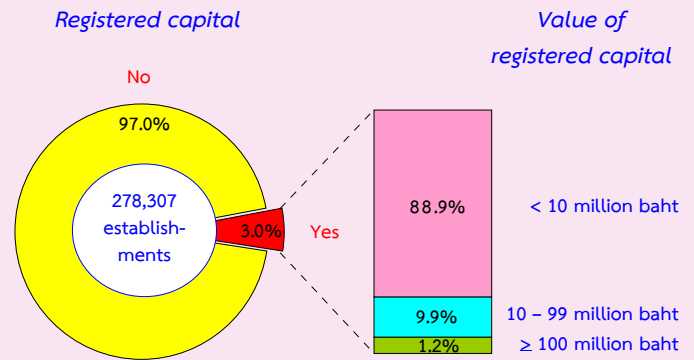
Figure 4 Percentage of business establishments by period of operation and size of establishment



6. Registered capital

The number of business establishments with registered capital amounted to 8,261 establishments or about 3.0 percent of the total. Most of them (about 88.9 percent) had less than 10 million baht of registered capital. Those with 10-99 million baht of registered capital were about 9.9 percent. The establishments with 100 million baht of registered capital and over were only 1.2 percent.

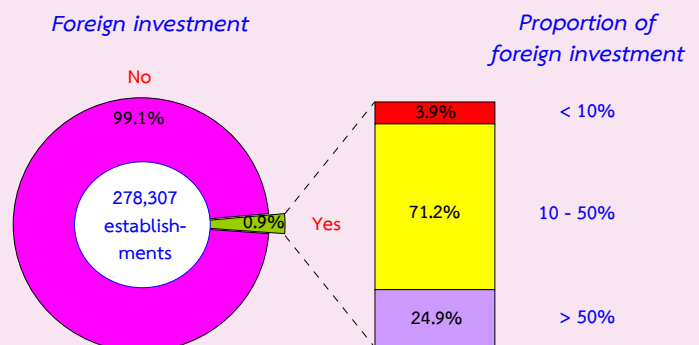
Figure 5 Percentage of business establishments by registered capital



7. Foreign investment or foreign share holding

The majority of business establishments in Central region (99.1 percent) had no foreign investment or foreign share holding. For the establishments with foreign share holding (0.9 percent), about 71.2 percent was found for the establishments with foreign share of 10-50 percent, and 24.9 percent was found for establishments with foreign share less than 10 percent.

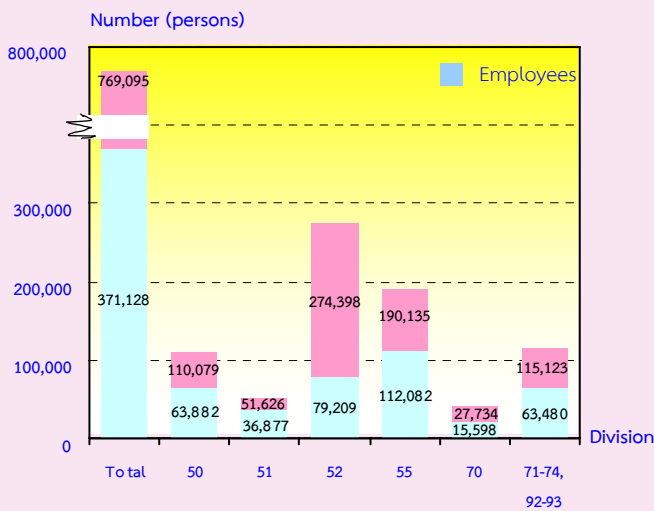
Figure 6 Percentage of business establishments by foreign investment or foreign share holding



8. Number of persons engaged and employees

In 2009, the number of persons engaged in the business establishments in Central region amounted to 769,095 persons and the number of employees was accounted for 371,128 persons. Considering by division of business industry, it was found that most of employees engaged in *hotels and restaurants* about 112,082 persons or 30.2 percent. This was followed by those engaged in *retail trade, (except of motor vehicles and motorcycles) and repair of personal and household goods* of about 79,209 persons or 21.3 percent. Employees engaged in *sale, maintenance and repair of motor vehicles and motorcycles, retail sale of automotive fuel*, accounted for 63,882 persons or 17.2 percent, while the rest engaged in other business industries.

Figure 7 Number of persons engaged of business establishments by division of business industry



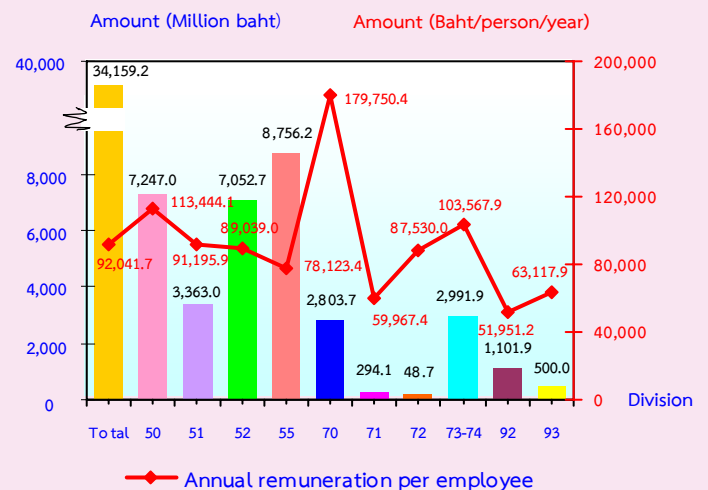
Persons engaged refers to owners or juristic partnerships, unpaid workers and employees

- Division 50 Sale, maintenance and repair of motor vehicles and motorcycles
- Division 51 Wholesale trade and commission trade, except of motor vehicles and motorcycles
- Division 52 Retail trade, (except of motor vehicles and motorcycles etc.)
- Division 55 Hotels and restaurants
- Division 70 Real estate activities
- Division 71 Renting of machinery and equipment
- Division 72 Computer and related activities
- Division 73 Research and development
- Division 74 Other business activities
- Division 92 Recreational, cultural and sporting activities
- Division 93 Other service activities

9. Remuneration

Remuneration of all employees engaged in business establishments in Central region was about 34.2 billion baht or about 92,042 baht per person per annum. Employees engaged in *real estate activities* received the highest annual remuneration of about 179,750 baht per person. This was followed by those engaged in *sale, maintenance and repair of motor vehicles and motorcycles, retail sale of automotive fuel*, received the annual remuneration of about 113,444 baht per person. Employees engaged in *research and development and other business activities* and those engaged in *wholesale trade and commission trade, except of motor vehicles and motorcycles*, received annual remuneration 103,567.9 baht and 91,196 baht per person respectively. Employees engaged in *recreational, cultural and sporting activities* received the lowest annual remuneration of about 51,951 baht per person.

Figure 8 Remuneration and annual remuneration per employee by division of business industry



10. Receipts, expenditures and value added

In 2009, the value of receipts, expenditures and value added of business establishments in Central region amounted to 831.6 billion baht, 666.2 billion baht and 165.4 billion baht respectively. The ratio of the value added to the receipts was about 19.9 percent. For the average value of receipts per establishment and per person engaged, there were about 3.0 million baht and 1.1 million baht respectively. While also, the average value added per establishment and per person engaged amounted to 594,400 baht and 215,100 baht respectively.

Considering by division of business industry, establishments engaged in *sale, maintenance and repair of motor vehicles and motorcycles, retail sale of automotive fuel* had the highest of

receipts, of about 289.7 billion baht, followed by the receipts of about 222.5 billion baht from establishments engaged in *wholesale trade and commission trade, except of motor vehicles and motorcycles*. Establishments engaged in *retail trade, (except of motor vehicles and motorcycles) and repair of personal and household goods* contributed the highest value added of about 51.9 billion baht, followed by the value added of about 43.0 billion baht from establishments engaged in *sale, maintenance and repair of motor vehicles and motorcycles, retail sale of automotive fuel*. Establishments engaged in *computer and related activities* had the lowest receipts and value added of about 709.0 million baht and 307.8 million baht respectively.

Table 2 Receipts and value added of business establishments by division of business industry

Division of business industry	Receipts			Value added			Value added per receipts (%)
	Value (Million baht)	Per establishment (In Thousand baht)	Per person engaged (In Thousand baht)	Value (Million baht)	Per establishment (In Thousand baht)	Per person engaged (In Thousand baht)	
Total	831,646.4	2,988.2	1,081.3	165,418.6	594.4	215.1	19.9
Sale, maintenance and repair of motor vehicles and motorcycles, retail sale of automotive fuel	289,650.7	8,455.7	2,631.3	43,024.1	1,256.0	390.8	14.9
Wholesale trade and commission trade, except of motor vehicles and motorcycles	222,513.6	25,234.0	4,310.1	23,388.9	2,652.4	453.0	10.5
Retail trade, (except of motor vehicles and motorcycles), repair of personal and household goods	210,453.9	1,566.9	767.0	51,915.0	386.5	189.2	24.7
Hotels and restaurants	56,071.6	1,137.4	294.9	24,206.6	491.0	127.3	43.2
Real estate activities	21,832.5	2,069.0	787.2	9,731.6	922.3	350.9	44.6
Renting of machinery and equipment without operator and of personal and household goods	3,919.8	1,175.4	407.6	1,584.2	475.0	164.7	40.4
Computer and related activities	709.0	1,130.8	514.5	307.8	491.0	223.4	43.4
Research and development and other business activities	17,668.7	3,036.4	480.9	6,672.7	1,146.7	181.6	37.8
Recreational, cultural and sporting activities	4,847.7	937.5	168.2	2,362.4	456.9	82.0	48.7
Other service activities	3,978.9	152.3	103.1	2,225.3	85.2	57.7	55.9

11. Conclusion and recommendations

The results of the 2010 Business Trade and Services survey showed that there were in total 278,307 business establishments in Central region. Most of them (about 98.7 percent) were establishments with 1-15 persons. The major business was *retail trade, (except of motor vehicles and motorcycles), repair of personal and household goods*, accounting for 48.3 percent. Persons working in business establishments amounted to 769,095 persons in total. Of this number, 371,128 persons were employees receiving the average annual remuneration about 92,042 baht per person. Moreover, the establishments contributed value of receipts, expenditures and value added of about 831.6 billion baht, 666.2 billion baht and 165.4 billion baht respectively.

- **Problems and obstacles of establishments**

About 17.3 percent of business establishments reported their problems and obstacles. The main issues were the increasing of business competitors, the high production cost, the economic crisis and the lower of purchasing power.

- **Aid needed from the government**

About 12.5 percent of business establishments expressed their opinion on aid needed from the government. The main issues were the need for a low loan interest rate, tax reduction, price control scheme and an improvement of technology and infrastructure.