

EXECUTIVE SUMMARY

The National Statistical Office carried out the Business Trade and Services Survey every two years, the 2010 survey is the 24th round. The main purpose of the survey is to collect the basic business information to be used by both public and private sectors for policy formulation and planning development. The survey covered business establishments engaged in wholesale trade, retail trade, hotels and restaurants, real estate activities, recreational and other services activities throughout the country.

The field work was conducted during May 1 to August 31, 2010. The data presented in this report was the information on business operation during January 1 to December 31, 2009 of the establishments located in **Bangkok**. The major findings are as follows:

1. Number of establishments by division of business industry

The survey result showed that there were in total 241,528 establishments in Bangkok. Most of them (about 41.0 percent) were engaged in *retail trade (except of motor vehicles and motorcycles), repair of personal and household goods*. This was followed by those engaged in *hotels and restaurants* and those engaged in *other services activities* were about 15.2 percent and 11.1 percent respectively. The business establishments engaged in *wholesale trade and commission trade, except of motor vehicles, and motorcycles* and those engaged in *real estate activities* had a close proportion, of about 8.9 percent and 8.8 percent respectively. The other divisions of business industry not mentioned above had rather low proportion; each division had less than 8.0 percent of the total.

Table 1 Number and percentage of business establishments by division of business industry

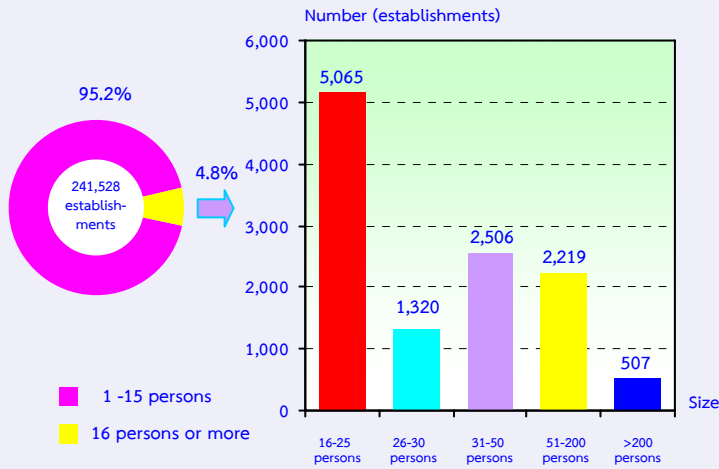
Division of business industry	Number	%
Total	241,528	100.0
Sale, maintenance and repair of motor vehicles and motorcycles, retail sale of automotive fuel	17,786	7.4
Wholesale trade and commission trade, except of motor vehicles and motorcycles	21,502	8.9
Retail trade, (except of motor vehicles and motorcycles), repair of personal and household goods	99,068	41.0
Hotels and restaurants	36,735	15.2
Real estate activities	21,186	8.8
Renting of machinery and equipment without operator and of personal and household goods	2,111	0.9
Computer and related activities	1,515	0.6
Research and development	23	-
Other business activities	9,904	4.1
Recreational, cultural and sporting activities	4,763	2.0
Other service activities	26,935	11.1

Note : - means nil of zero or negligible amount.

2. Size of establishment

The business establishments located in Bangkok, most of them (about 229,911 establishments or 95.2 percent) were establishments with 1-15 persons. Those with more than 15 persons engaged were about 11,617 establishments or 4.8 percent. Of this number, establishments with 16-25 persons, 31-50 persons, 51-200 persons, and 26-30 persons amounted to 5,065 establishments, 2,506 establishments, 2,219 establishments, and 1,320 establishments respectively. The largest size of establishments, with more than 200 persons engaged, was only 507 establishments.

Figure 1 Number of business establishments by size of establishment (number of persons engaged)

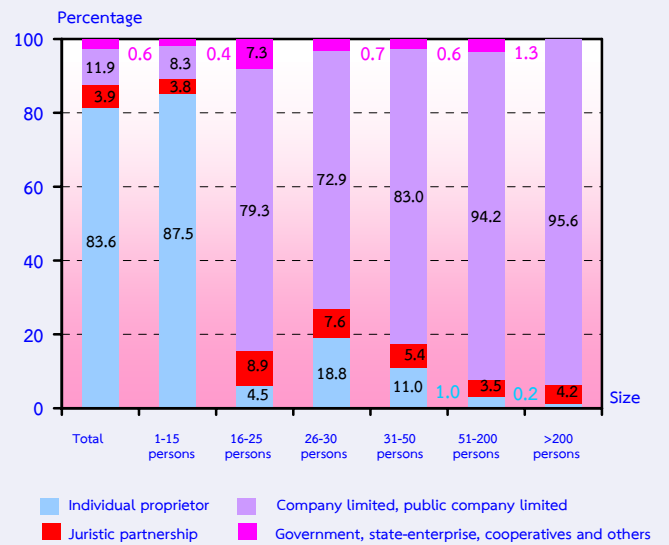


3. Form of legal organization

Most establishments (about 83.6 percent) were individual proprietor. The establishments as company limited and public company limited and juristic partnership were about 11.9 percent and 3.9 percent respectively. Those, which were in the form of government, state-enterprise, cooperatives and others, were very small proportion, of about 0.6 percent.

Considering by size of establishments, it was found that a high proportion of the establishments with 1-15 persons engaged (about 87.5 percent) was in the form of individual proprietor. While a high proportion of about 95.6 percent of establishments with more than 200 persons engaged was in the form of company or public company limited.

Figure 2 Percentage of business establishments by form of legal organization and size of establishment

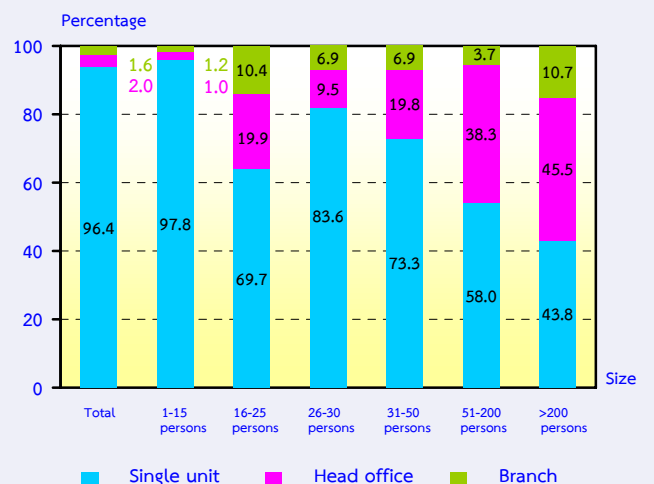


4. Form of economic organization

The majority of establishments in Bangkok (96.4 percent) were in the form of single unit. About 2.0 percent was a head office, and the rest of about 1.6 percent was an office branch or subsidiary.

Considering the form of economic organization by size of establishment, it showed that establishments in almost all sizes were in the form of single unit. This was except for establishments with more than 200 persons engaged where a high proportion of about 45.5 percent was a head office.

Figure 3 Percentage of business establishments by form of economic organization and size of establishment

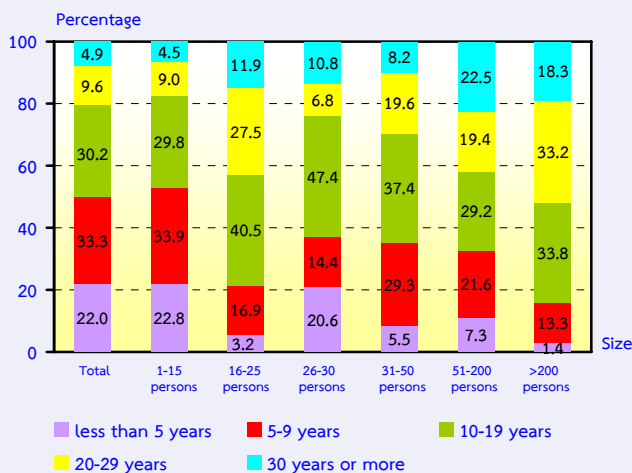


5. Period of operation

Most of the establishments (about 33.3 percent) have operated their business for 5-9 years. The establishments operated their business for 10-19 years were about 30.2 percent. Those with operation less than 5 years and 20-29 years were about 22.0 percent and 9.6 percent respectively. The establishments operated their business for 30 years or more had the lowest proportion, of about 4.9 percent

Considering by size of establishments, (persons engaged), it was found that over 64.0 percent of establishments in almost all sizes have operated their business for 10 years or more. This was except for establishment with 1-15 persons engaged and operated their business less than 10 years which had a high proportion of about 56.7 percent.

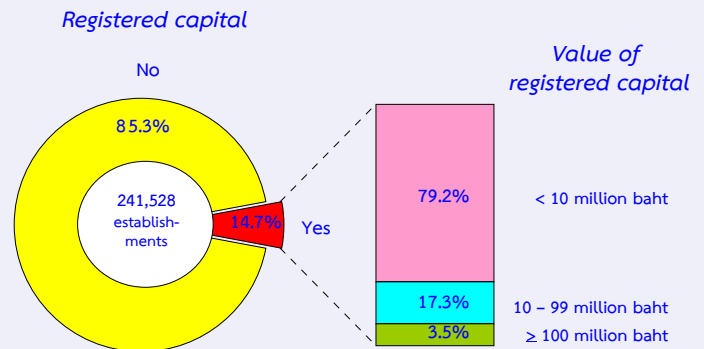
Figure 4 Percentage of business establishments by period of operation and size of establishment



6. Registered capital

The number of business establishments with registered capital amounted to 35,512 establishments or about 14.7 percent of the total. Most of them (about 79.2 percent) had less than 10 million baht of registered capital. Those with 10-99 million baht of registered capital were about 17.3 percent. The establishments with 100 million baht of registered capital and over were about 3.5 percent.

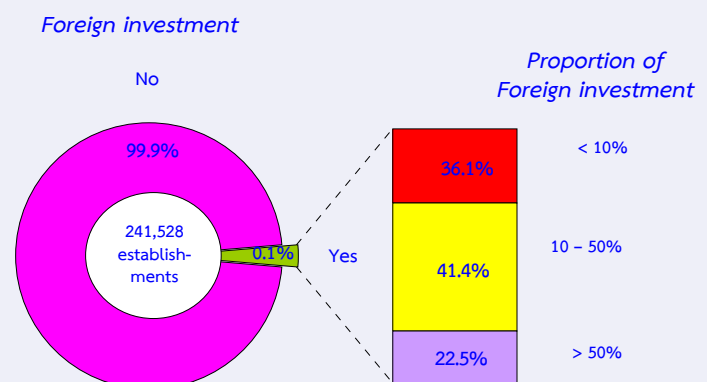
Figure 5 Percentage of business establishments by registered capital



7. Foreign investment or foreign share holding

The majority of business establishments in Bangkok (98.6 percent) had no foreign investment or foreign share holding. Out of these, about 64.8 percent was of establishments with foreign share holding around 10-50 percent and about 23.3 percent was of establishments with foreign share over fifty percent. The rest of about 11.9 percent had foreign investment with a share holding less than ten percent.

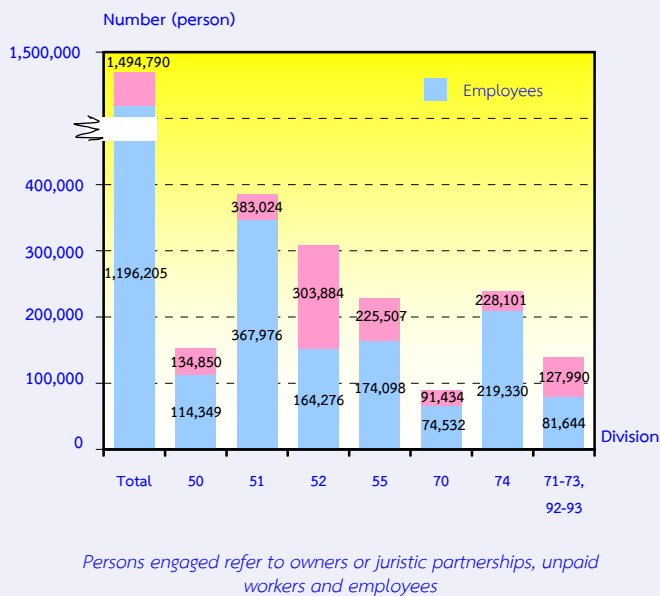
Figure 6 Percentage of business establishments by foreign investment or foreign share holding



8. Number of persons engaged and employees

In 2009, the number of persons engaged in the business establishments in Bangkok amounted to 1.5 million persons. Of this figure, the number of employees was 1.2 million persons. Considering by division of business industry, it was found that most of employees engaged in *wholesale trade and commission trade except of motor vehicles and motorcycles* of about 367,976 persons or 30.8 percent. This was followed by those engaged in *other business activities* about 219,330 persons or 18.3 percent. Employees engaged in *hotels and restaurants* accounted for 174,098 persons or 14.6 percent. The rest engaged in other business industries.

Figure 7 Number of persons engaged of business establishments by division of business industry

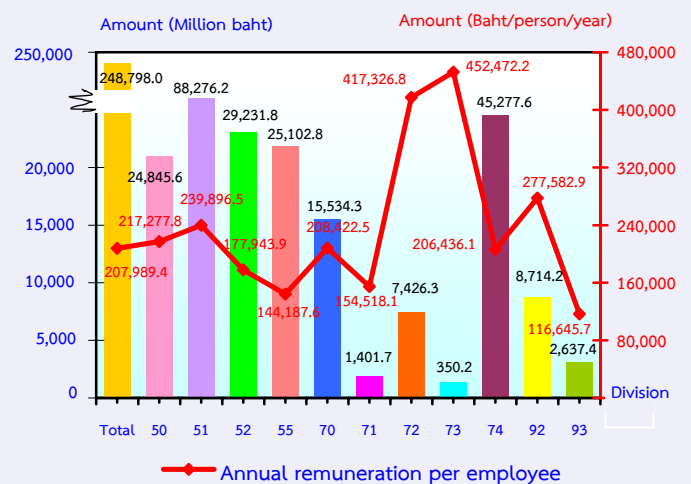


- Division 50 Sale, maintenance and repair of motor vehicles and motorcycles
- Division 51 Wholesale trade and commission trade, except of motor vehicles and motorcycles
- Division 52 Retail trade, (except of motor vehicles and motorcycles etc)
- Division 55 Hotels and restaurants
- Division 70 Real estate activities
- Division 71 Renting of machinery and equipment
- Division 72 Computer and related activities
- Division 73 Research and development
- Division 74 Other business activities
- Division 92 Recreational, cultural and sporting activities
- Division 93 Other service activities

9. Remuneration

Remuneration of all employees engaged in business establishments in Bangkok was about 248.8 billion baht or about 207,989 baht per person per annum. Employees engaged in *research and development* received the highest annual remuneration of about 452,472 baht. This was followed by those engaged in *computer and related activities* received the annual remuneration of about 417,327 baht per person. Employees engaged in *recreational, cultural and sporting activities* and those engaged in *wholesale trade and commission trade (except of motor vehicles and motorcycles)* received the average annual remuneration of about 277,583 baht and 239,897 baht per person respectively. Employees engaged in *other service activities* received the lowest annual remuneration of about 116,646 baht per person.

Figure 8 Remuneration and annual remuneration per employee by division of business industry



10. Receipts, expenditures and value added

In 2009, the value of receipts, expenditures and value added of business establishment in Bangkok amounted to 4.4 trillion baht, 3.7 trillion baht and 734.5 billion baht respectively. The ratio of the value added to the receipts was about 16.6 percent. For the average value of receipts per establishment and per person engaged, it was about 18.3 million baht and 3.0 million baht respectively. Meanwhile, the average value added per establishment and per person engaged amounted to 3.0 million baht and 491,400 baht respectively.

Considering by division of business industry, the result showed that most of the receipts and value added were from *wholesale*

trade and commission trade, except of motor vehicles and motorcycles which had the highest proportion of about 2.1 trillion baht and 250.4 billion baht respectively. The establishments engaged in *sale, maintenance and repair of motor vehicles and motorcycles, retail sale of automotive fuel* contributed the receipts and value added of about 1.1 trillion baht and 69.0 billion baht respectively. For the establishments engaged in *retail trade, (except of motor vehicles and motorcycles), repair of personal and household goods*, the receipts and value added amounted to 676.9 billion baht and 140.1 billion baht. However, the establishments engaged in *research and development* had the lowest amount of receipts and value added of about 1.5 billion baht and 456.3 million baht respectively.

Table 2 Receipts and value added of business establishments by division of business industry

Division of business industry	Receipts			Value added			Value added per receipts (%)
	Value (Million baht)	Per establishment (in Thousand baht)	Per person engaged (in Thousand baht)	Value (Million baht)	Per establishment (in Thousand baht)	Per person engaged (in Thousand baht)	
Total	4,415,943.8	18,283.4	2,954.2	734,489.8	3,041.0	491.4	16.6
Sale, maintenance and repair of motor vehicles and motorcycles, retail sale of automotive fuel	1,117,060.7	62,805.6	8,283.7	68,981.0	3,878.4	511.5	6.2
Wholesale trade and commission trade, except of motor vehicles and motorcycles	2,086,016.0	97,015.0	5,446.2	250,379.3	11,644.5	653.7	12.0
Retail trade, (except of motor vehicles and motorcycles), repair of personal and household goods	676,942.6	6,833.1	2,227.6	140,063.1	1,413.8	460.9	20.7
Hotels and restaurants	141,797.6	3,860.0	628.8	76,351.8	2,078.4	338.6	53.8
Real estate activities	124,717.1	5,886.8	1,364.0	63,234.0	2,984.7	691.6	50.7
Renting of machinery and equipment without operator and of personal and household goods	13,378.9	6,337.7	1,154.1	5,040.8	2,387.9	434.9	37.7
Computer and related activities	37,099.1	24,487.8	1,928.3	16,530.3	10,911.1	859.2	44.6
Research and development	1,544.1	67,134.8	1,964.5	456.3	19,839.1	580.6	29.6
Other business activities	143,142.0	14,453.0	627.5	79,701.4	8,047.4	349.4	55.7
Recreational, cultural and sporting activities	62,802.9	13,185.6	1,726.1	27,820.1	5,840.9	764.6	44.3
Other service activities	11,442.9	424.8	190.7	5,931.7	220.2	98.9	51.8

11. Conclusions and recommendations

The results of the 2010 Business Trade and Services survey showed that there were in total 241,528 business establishments in Bangkok. Most of them (about 95.2 percent) were establishments with 1-15 persons. The major business was *retail trade (except of motor vehicles and motorcycles), repair of personal and household goods*, accounting for 41.0 percent. Persons working in business establishments amounted to 1.5 million persons in total. Out of this, 1.2 million persons were employees receiving the average annual remuneration about 207,989 baht per person. Moreover, the establishments contributed value of receipts, expenditures and value added of about 4.4 trillion baht, 3.7 trillion baht and 734.5 billion baht respectively.

- **Problems and obstacles of establishments**

About 7.2 percent of business establishments reported their problems and obstacles. The main issues were the high production cost, the lack of efficient personnel, the economic crisis, the lower purchasing power and the lack of technology and infrastructure.

- **Aid needed from the government**

About 8.1 percent of business establishments expressed their opinion on aid needed from the government. The main issues were the need for a low loan interest rate, a tax reduction scheme, a help desk for agencies consultation and other.